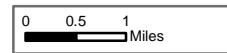


Burro Incident Index Map

GIS Acres 24,547
7/5/2017 18:24



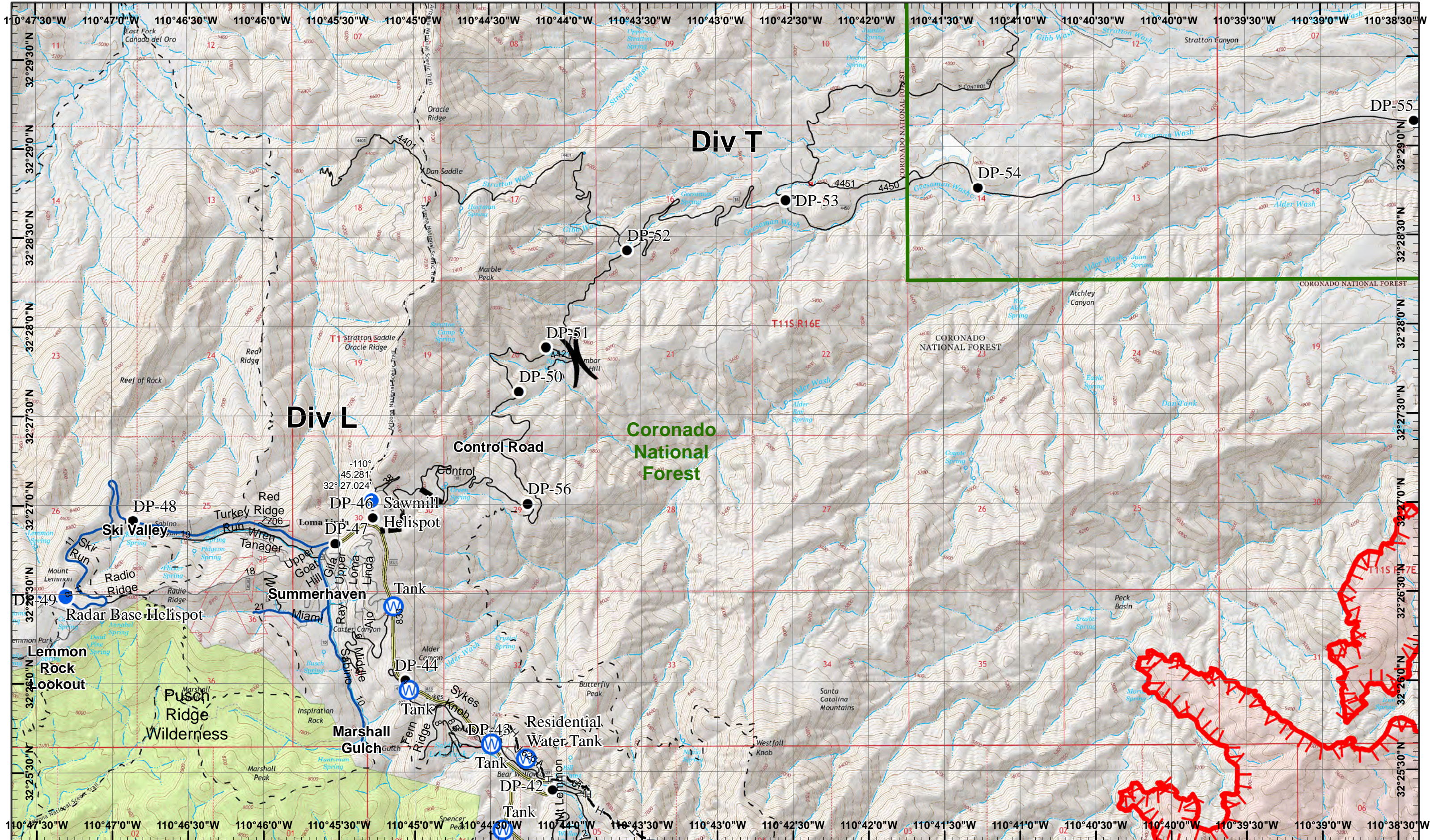
- Dip Site
- Fire Origin
- Incident Command Post
- Completed Dozer Line
- Camp
- Helibase
- Water Source
- Planned Fire Line
- Drop Point
- Helispot
- Completed Hand Line
- Completed Line
- Uncontrolled Fire Edge
- Fire Perimeter

Day Operational Period 7/6/2017

Map Created 7/5/2017 8:31:10 PM RDC

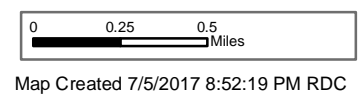
) Division
] Branch





Burro Incident
 Day Operational Period 7/6/2017

GIS Acres 24,547
 7/5/2017 18:24



- North
- Drop Point
- Water Source
- Planned Fire Line
- Helispot
- Completed Hand Line
- Uncontrolled Fire Edge

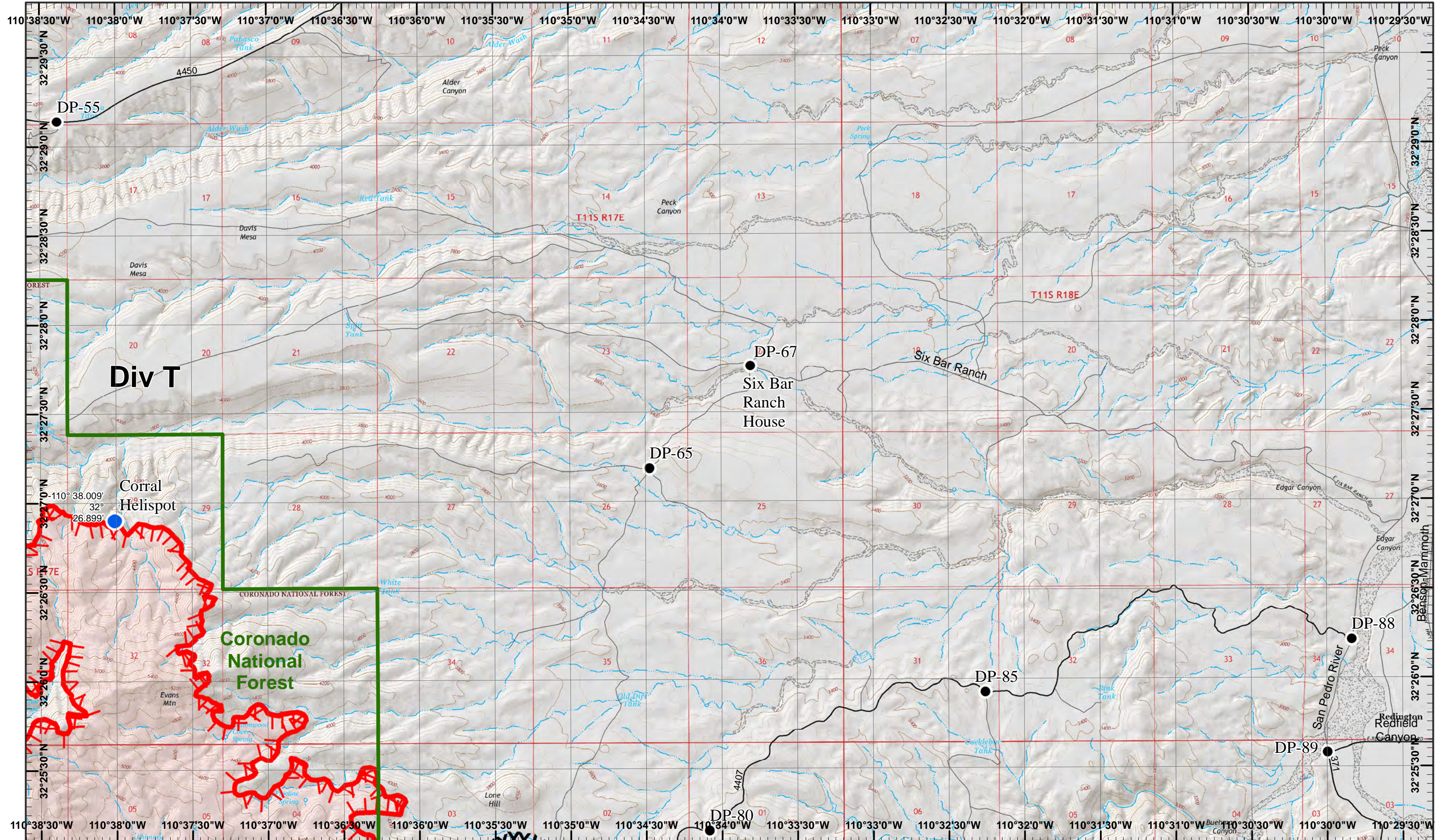
Neighboring Pages

West Page	North Page	East Page
	South Page	

1	2
3	4
5	6

Page 1
)(Division
 || Branch





Div T

Corral Helispot

Coronado National Forest

DP-67
Six Bar Ranch House

DP-65

DP-85

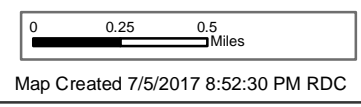
DP-88

DP-89

DP-80

Burro Incident
Day Operational Period 7/6/2017

GIS Acres 24,547
7/5/2017 18:24



- North
- Drop Point
- Helispot
- Uncontrolled Fire Edge
- Completed Dozer Line

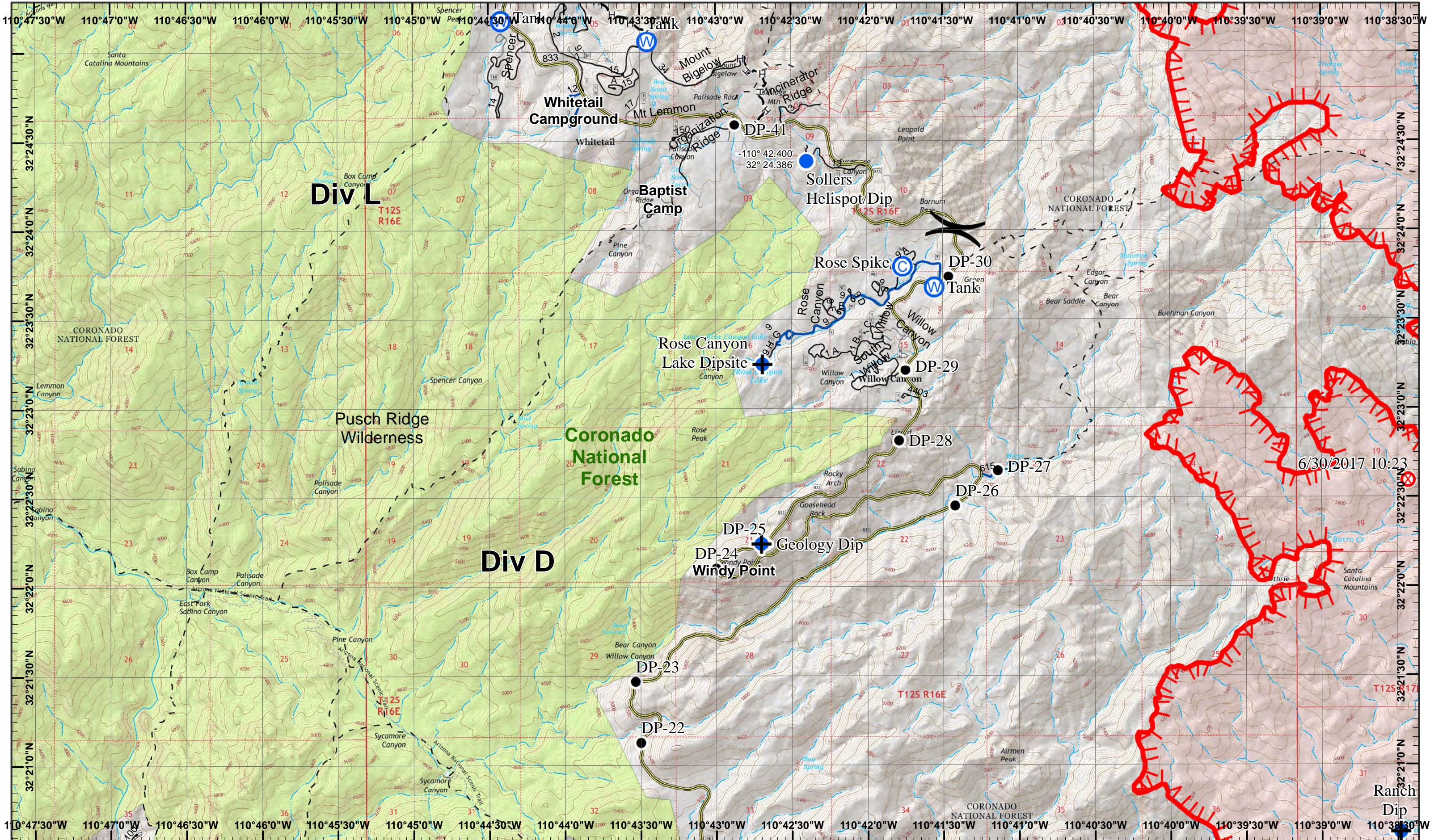
Neighboring Pages

West Page	North Page	East Page
	South Page	

1	2
3	4
5	6

Page 2
) Division
[Branch





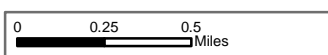
Div L

Div D

6/30/2017 10:23

Burro Incident
Day Operational Period 7/6/2017

GIS Acres 24,547
7/5/2017 18:24



Map Created 7/5/2017 8:52:42 PM RDC

- North
- Dip Site
- Camp
- Drop Point
- Fire Origin
- Helispot
- Water Source
- Uncontrolled Fire Edge
- Completed Hand Line

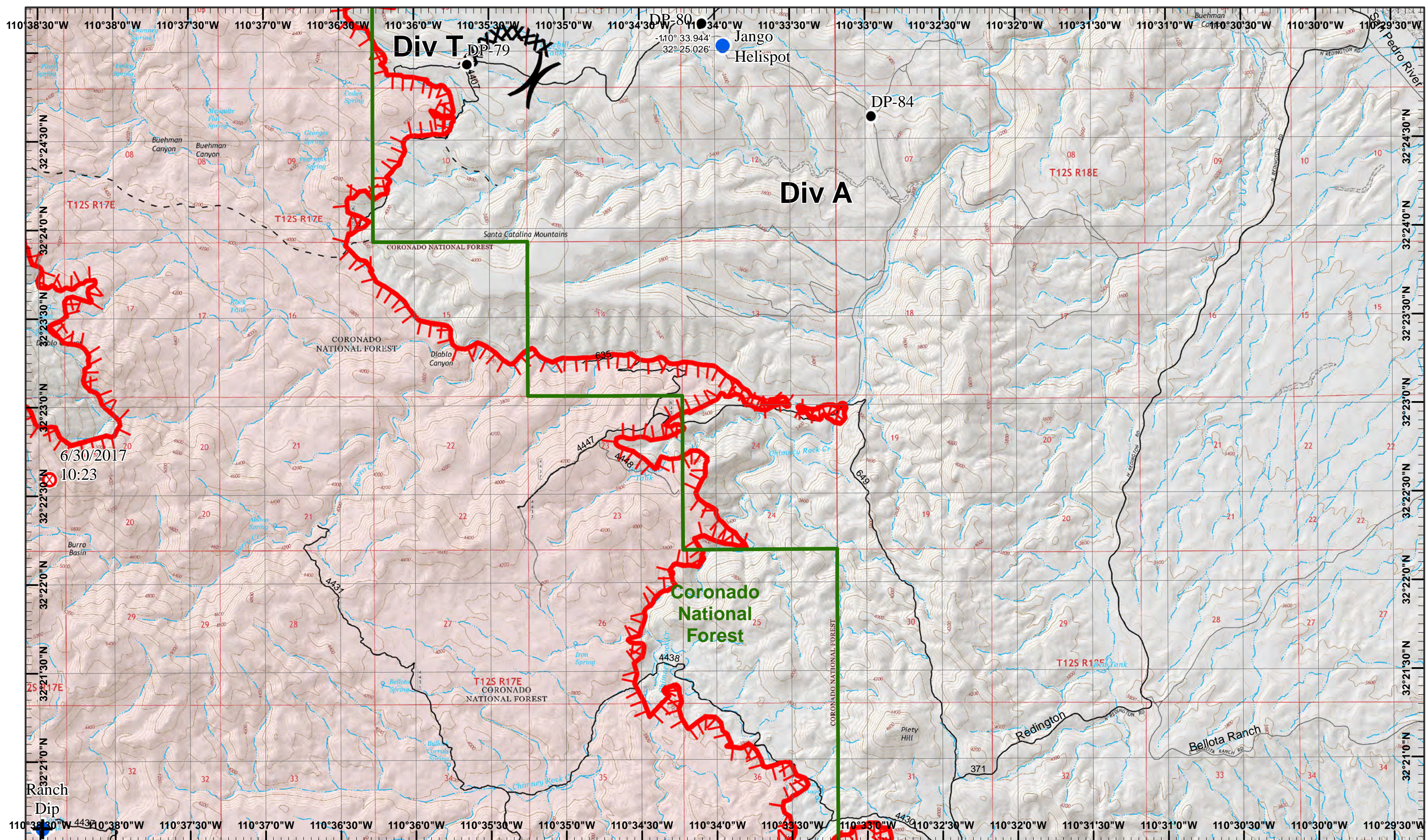
Neighboring Pages

West Page	North Page	East Page
	South Page	

1	2
3	4
5	6

Page 3
) Division
[Branch





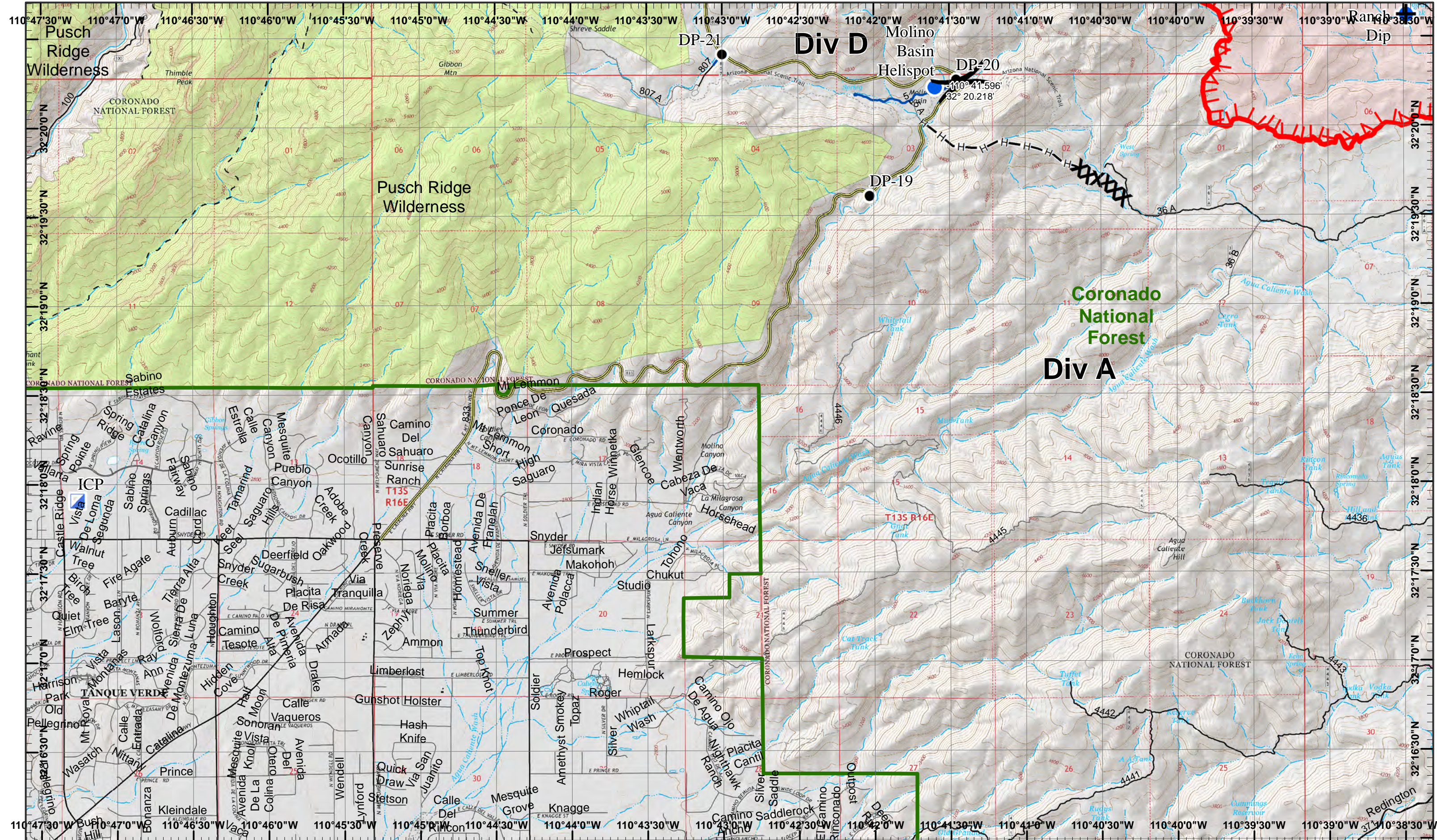
Burro Incident
 Day Operational Period 7/6/2017

GIS Acres 24,547
 7/5/2017 18:24
 Map Created 7/5/2017 9:08:18 PM RDC

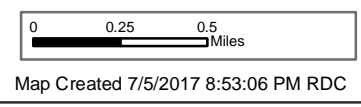
Dip Site
 Drop Point
 Helispot
 Completed Dozer Line
 Fire Origin
 Uncontrolled Fire Edge

Neighboring Pages

West Page	North Page	East Page
	South Page	



Burro Incident
 Day Operational Period 7/6/2017

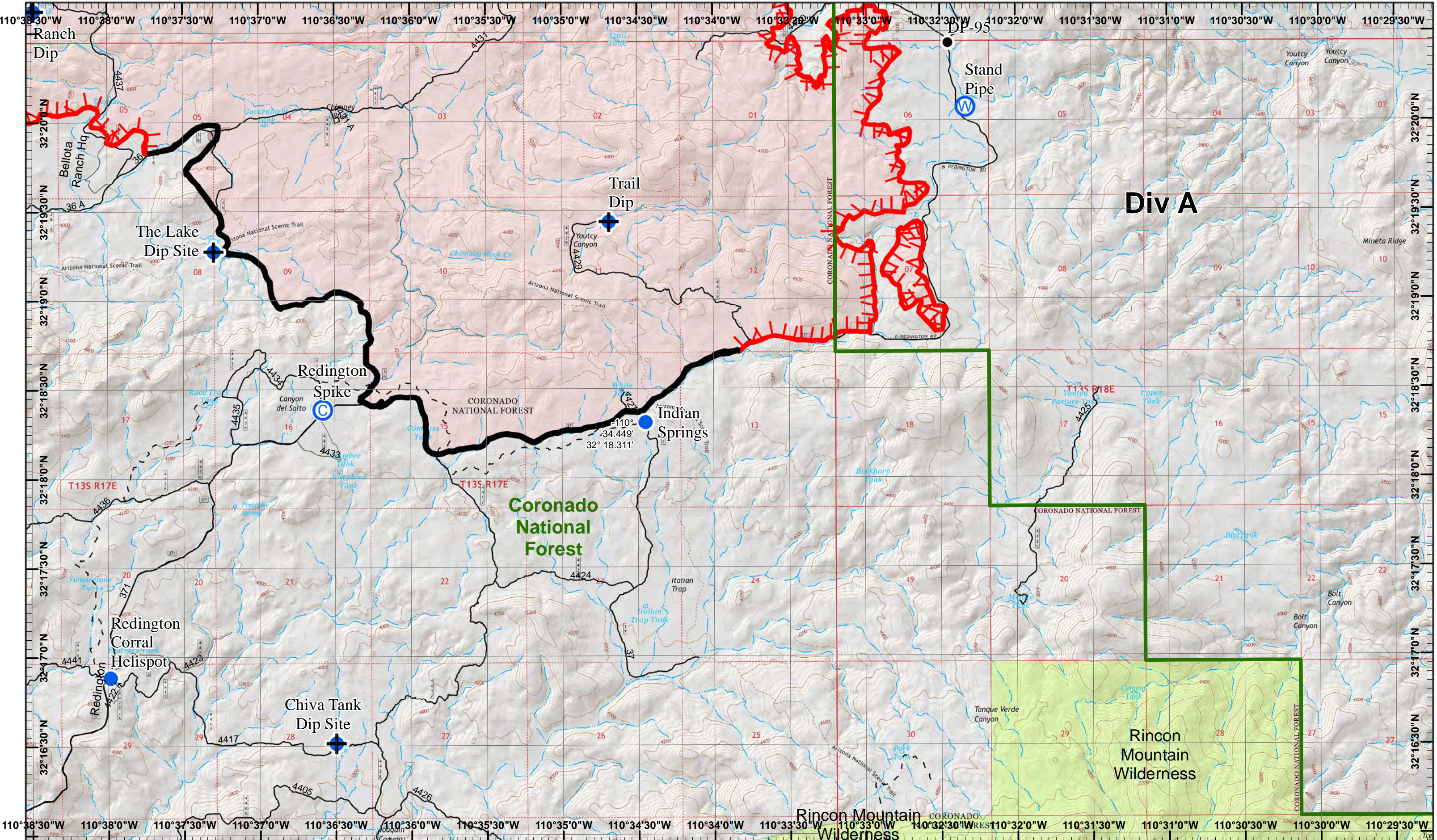


- North
- Dip Site
- Drop Point
- Incident Command Post
- Completed Dozer Line
- Helispot
- Completed Hand Line
- Uncontrolled Fire Edge

Neighboring Pages

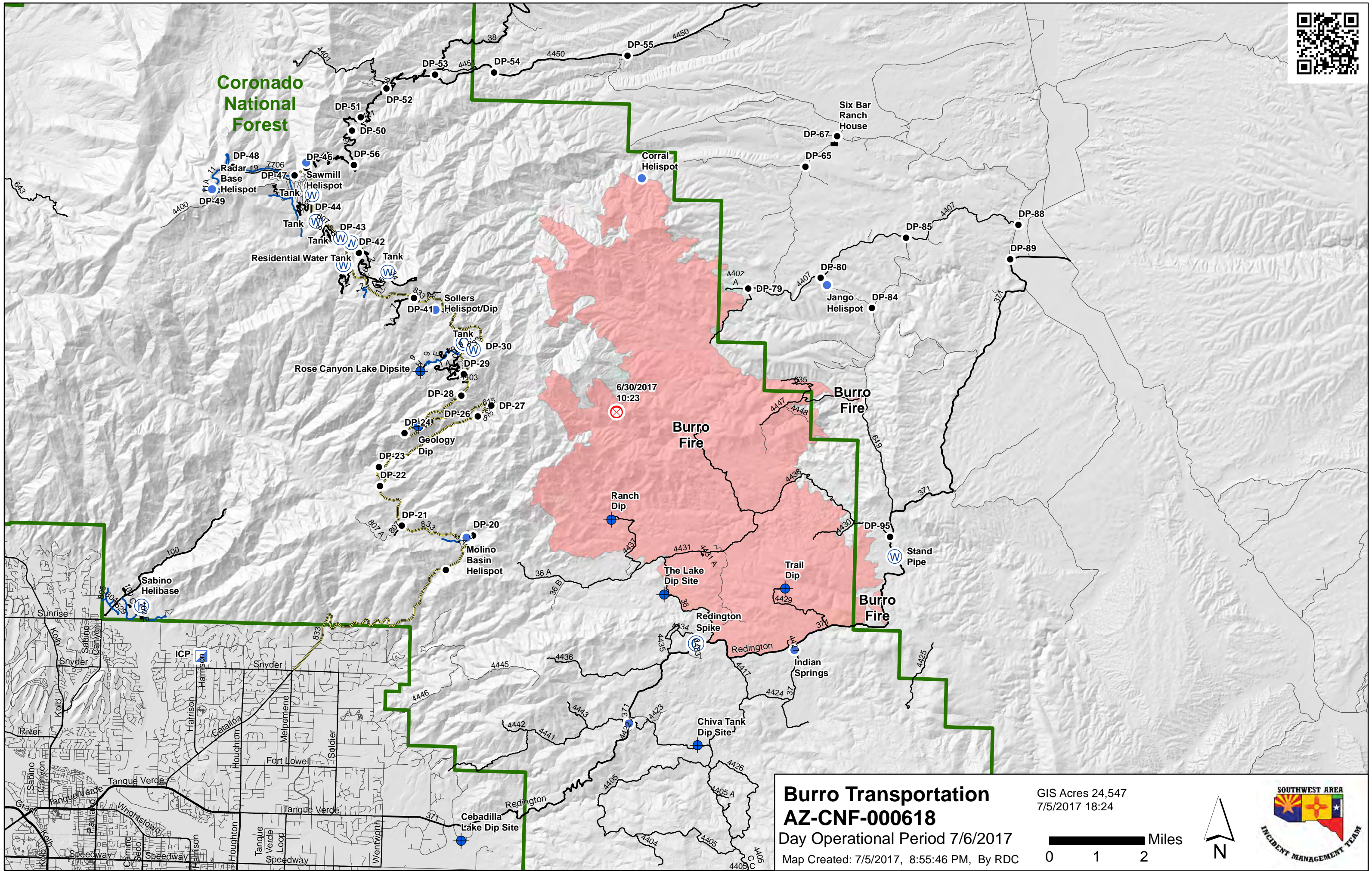
West Page	North Page	East Page
	South Page	

Page 5
)(Division
 || Branch





Coronado National Forest



Burro Transportation
AZ-CNF-000618
Day Operational Period 7/6/2017
Map Created: 7/5/2017, 8:55:46 PM, By RDC

GIS Acres 24,547
7/5/2017 18:24

