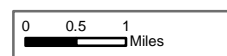


Burro Incident Index Map

GIS Acres 25,694
7/6/2017 19:40



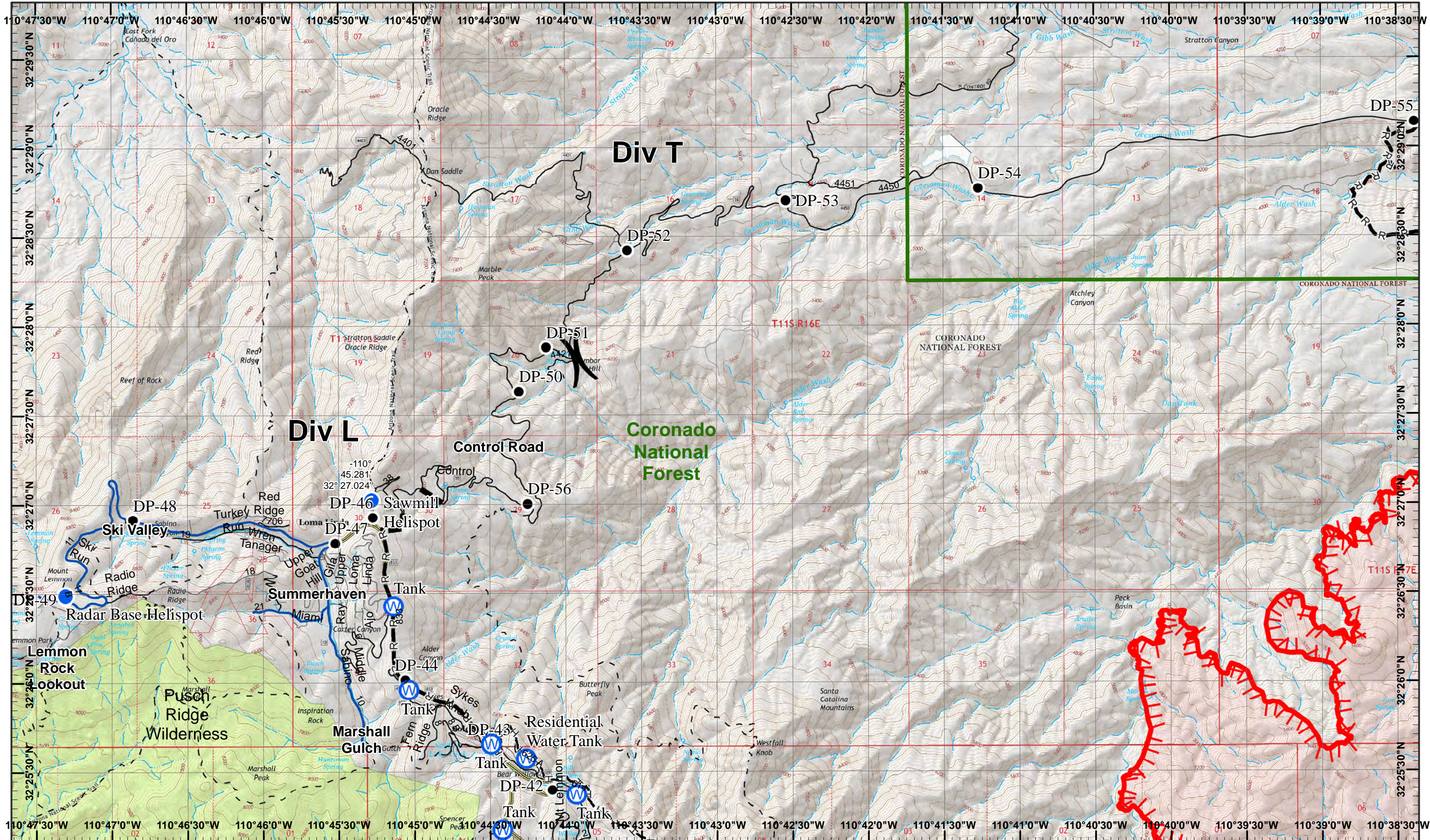
- | | | | |
|------------|-----------------------|-------------------------|----------------------------|
| Dip Site | Fire Origin | Repeater | R—R Road as Completed Line |
| Camp | Helispot | Water Source | XXX Completed Dozer Line |
| Drop Point | Incident Command Post | H—H Completed Hand Line | Planned Fire Line |
| | | Completed Line | Uncontrolled Fire Edge |
| | | | Fire Perimeter |

Day Operational Period 7/7/2017

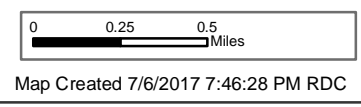
Map Created 7/6/2017 8:14:41 PM RDC



) Division
] Branch



Burro Incident
 GIS Acres 25,694
 7/6/2017 19:40
 Day Operational Period 7/7/2017



- North Arrow
- Drop Point
- Water Source
- Planned Fire Line
- Helispot
- Completed Hand Line
- Uncontrolled Fire Edge
- R Road as Completed Line



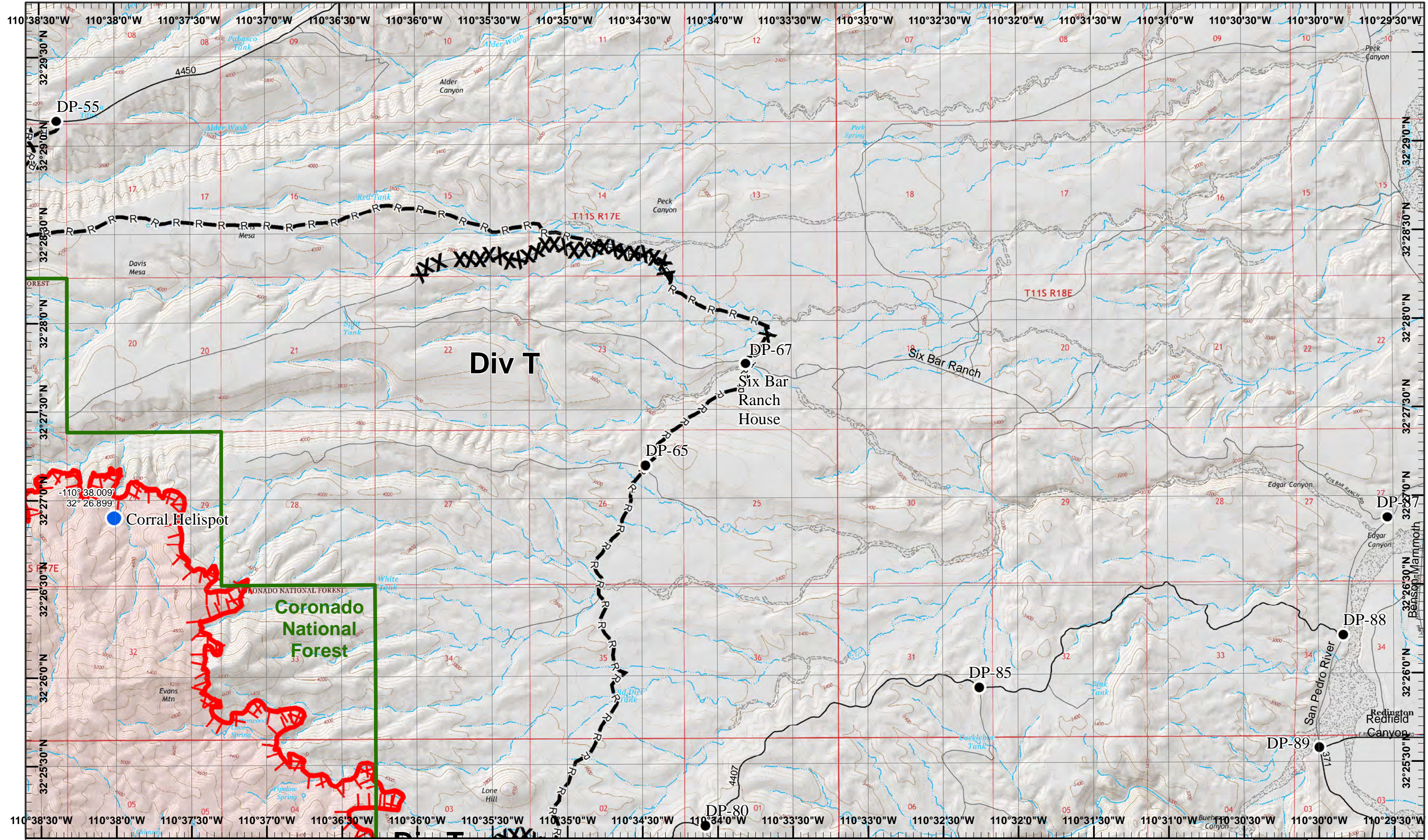
Neighboring Pages

West Page NA	North Page NA	East Page 2
	South Page 3	



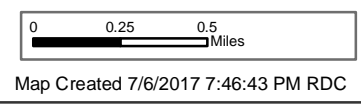
Page 1
)(Division
 || Branch





Burro Incident
 Day Operational Period 7/7/2017

GIS Acres 25,694
 7/6/2017 19:40



- North
- Drop Point
- Road as Completed Line
- Uncontrolled Fire Edge
- Helispot
- Completed Dozer Line

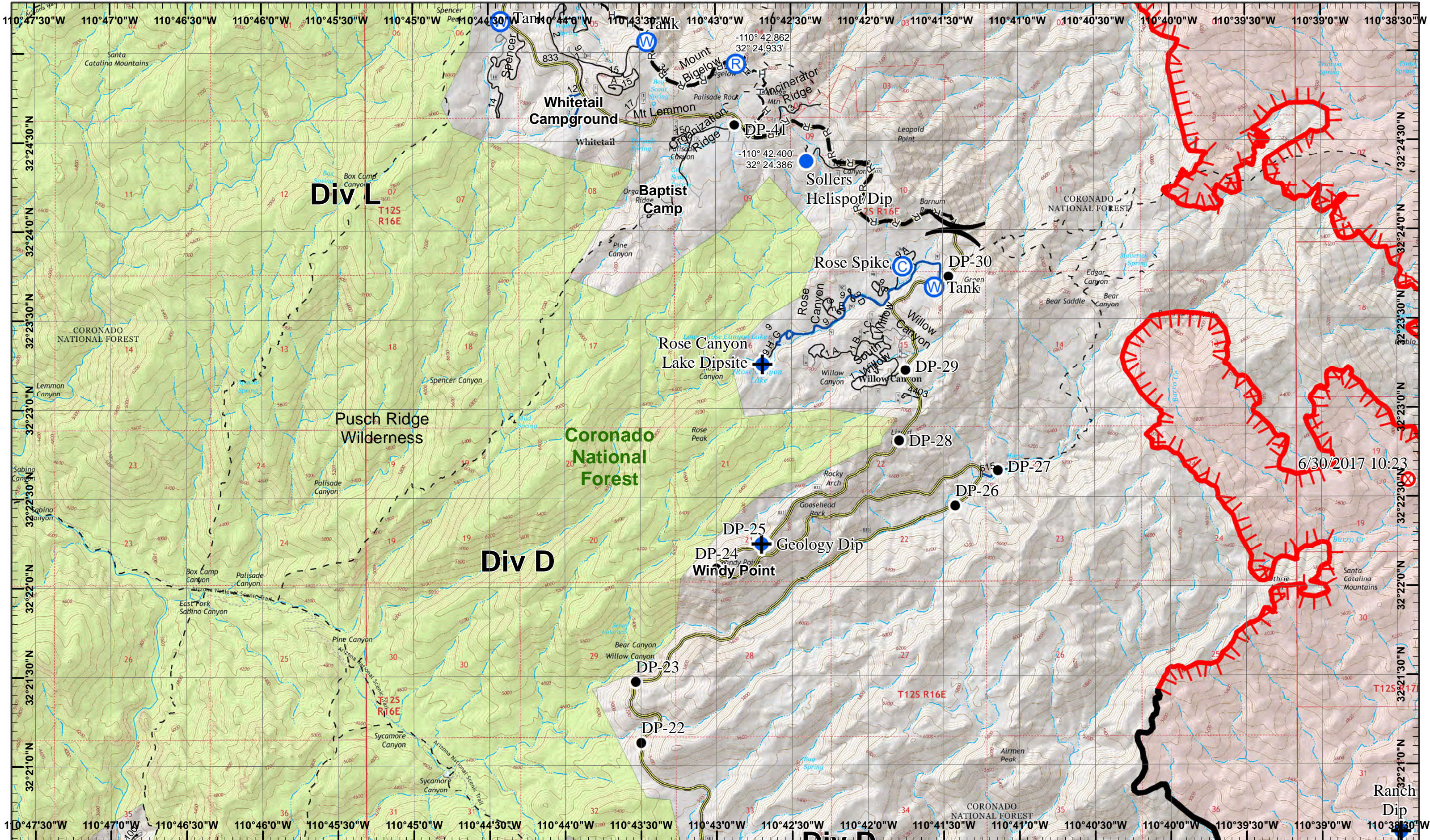


Neighboring Pages
 West Page 1 North Page NA East Page NA
 South Page 4

1	2
3	4
5	6

Page 2
)(Division
 || Branch





Burro Incident
 Day Operational Period 7/7/2017

GIS Acres 25,694
 7/6/2017 19:40
 Map Created 7/6/2017 7:46:55 PM RDC

	Dip Site	Camp	Drop Point	Helispot	Repeater	Water Source	Completed Line	Road as Completed Line	Completed Hand Line	Uncontrolled Fire Edge

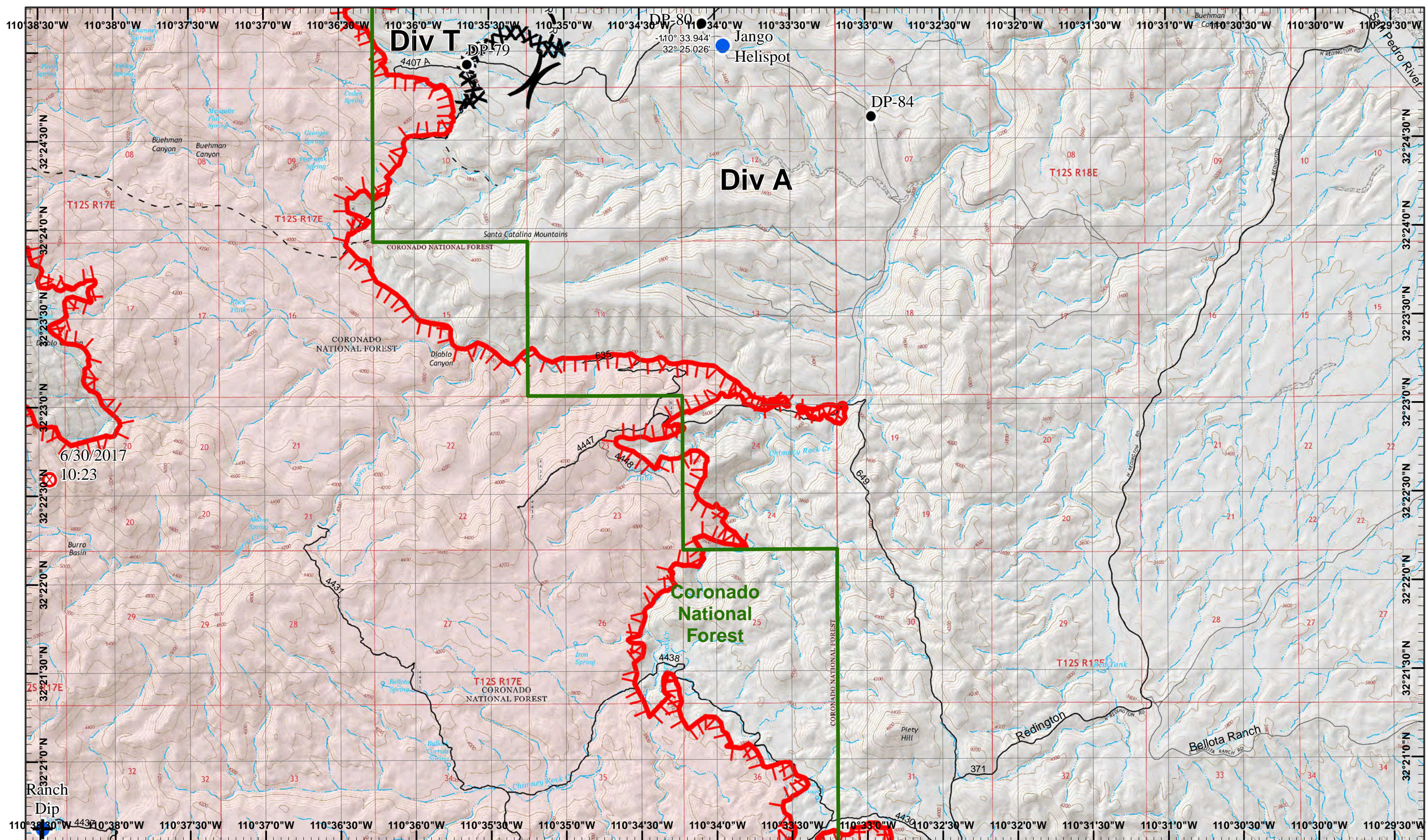
Neighboring Pages
 West Page NA North Page 1
 South Page 5 East Page 4

1	2
3	4
5	6

Page 3
)(Division
 || Branch



6/30/2017 10:23



Burro Incident
 Day Operational Period 7/7/2017

GIS Acres 25,694
 7/6/2017 19:40
 Map Created 7/6/2017 7:47:06 PM RDC



- Dip Site
- Drop Point
- Helispot
- Fire Origin
- Road as Completed Line
- Uncontrolled Fire Edge
- Completed Dozer Line

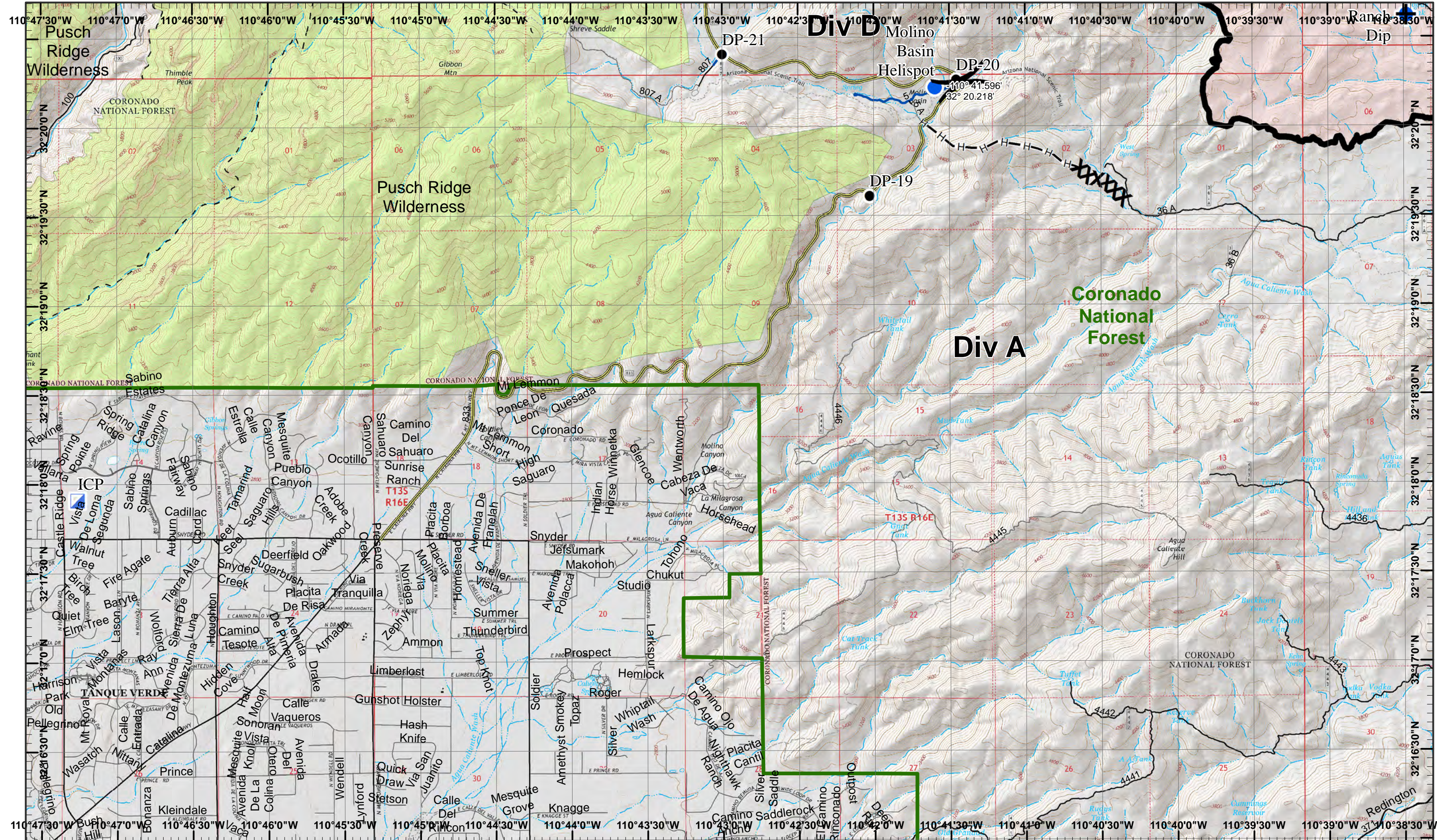


Neighboring Pages
 West Page 3 North Page 2 East Page NA
 South Page 6

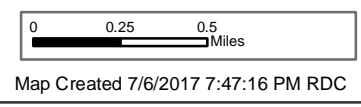
1	2
3	4
5	6

Page 4
 Division
 Branch





Burro Incident
 Day Operational Period 7/7/2017



- Dip Site
- Drop Point
- Incident Command Post
- Completed Line
- Helispot
- Completed Hand Line
- Completed Dozer Line

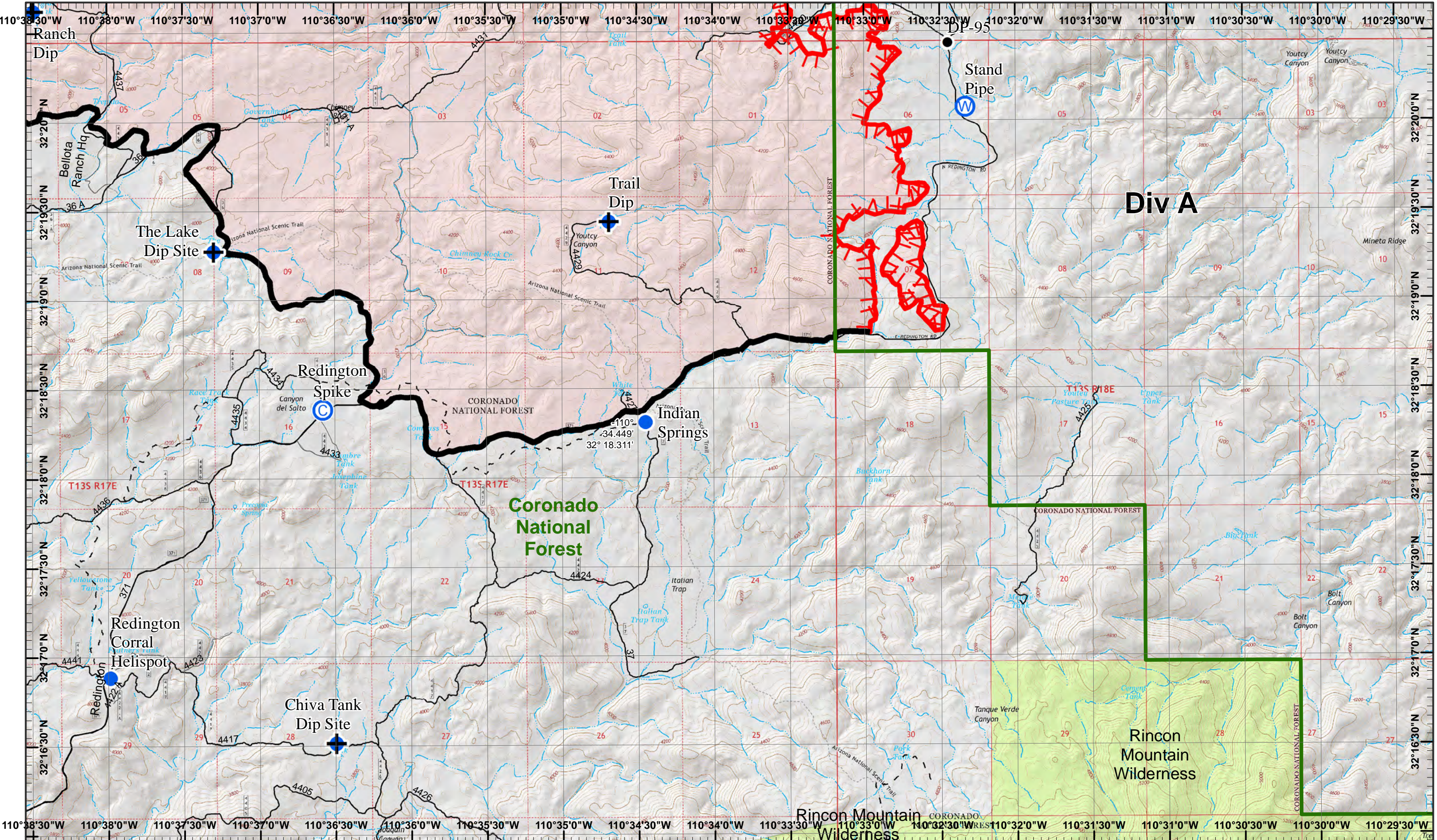


Neighboring Pages
 West Page NA North Page 3 East Page 6
 South Page NA

1	2
3	4
5	6

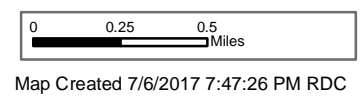
Page 5
)(Division
 || Branch





Burro Incident
 Day Operational Period 7/7/2017

GIS Acres 25,694
 7/6/2017 19:40



- North
- Dip Site
- Camp
- Drop Point
- Water Source
- Uncontrolled Fire Edge
- Helispot
- Completed Line

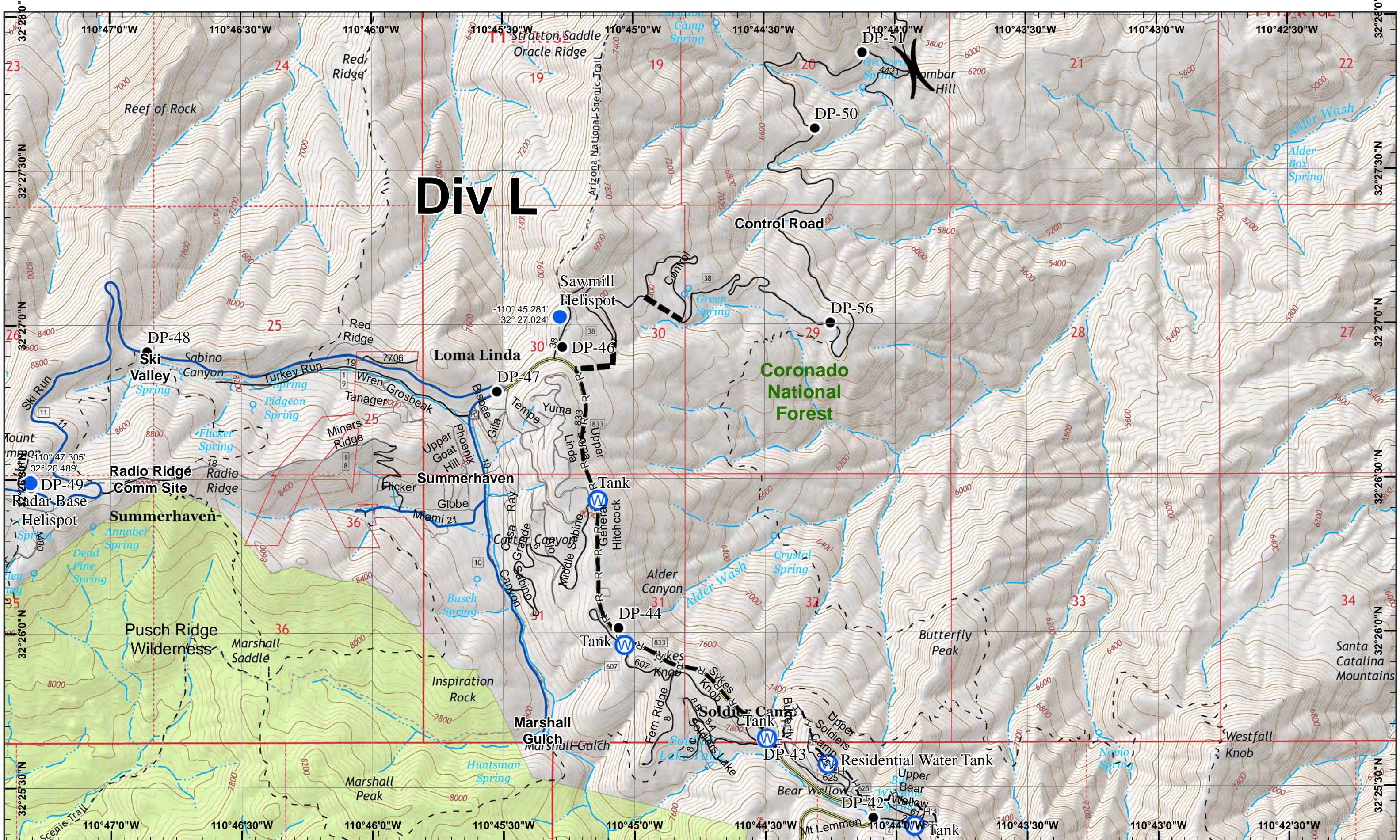


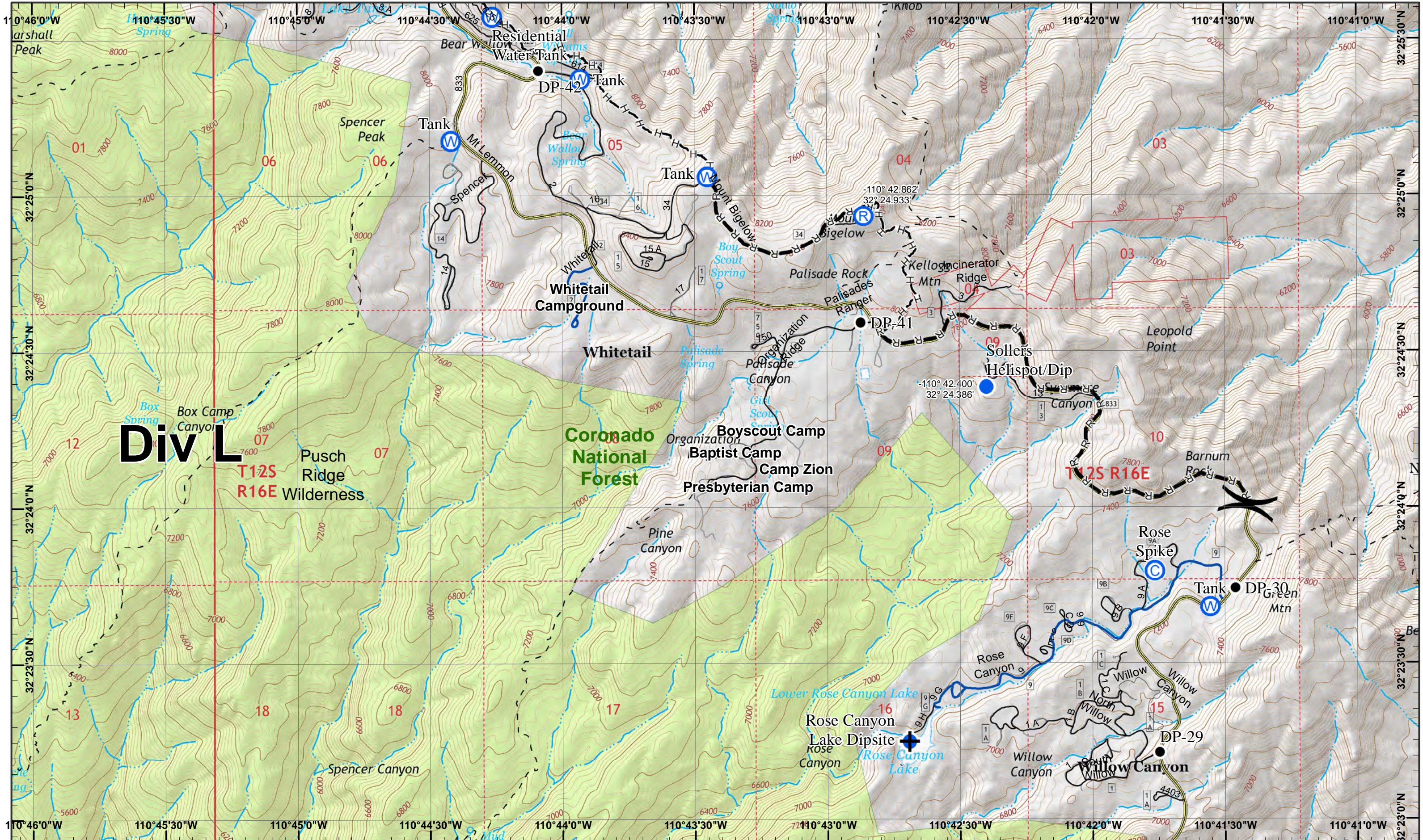
Neighboring Pages
 West Page 5 North Page 4 East Page NA
 South Page NA

1	2
3	4
5	6

Page 6
)(Division
 || Branch





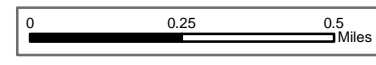


Div L

T12S
R16E

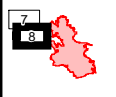
Burro Incident
Day Operational Period 7/7/2017

GIS Acres 25,694
7/6/2017 19:40



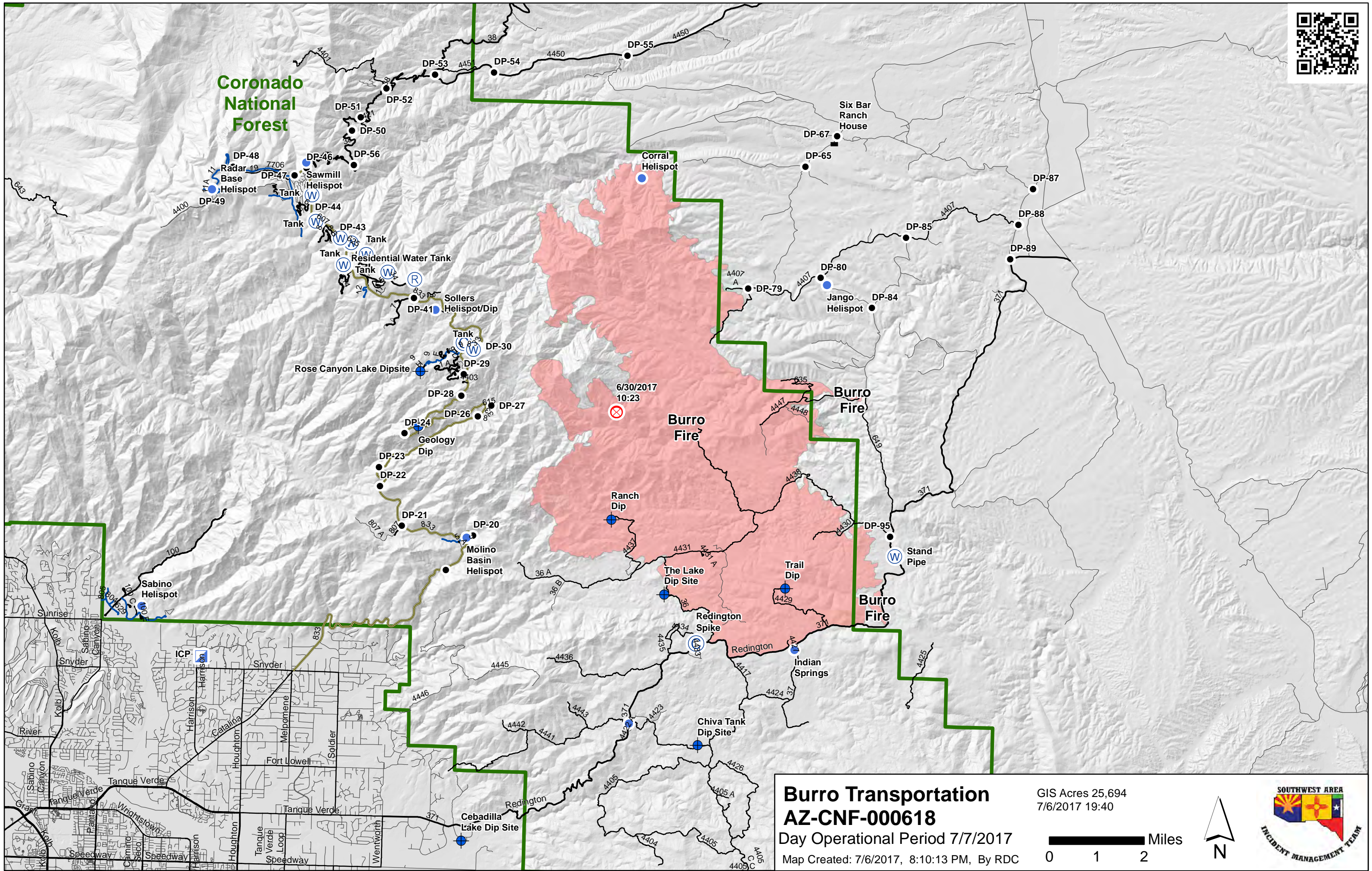
Map Created 7/6/2017 7:53:43 PM RDC

- North
- Dip Site
- Camp
- Drop Point
- Repeater
- Water Source
- Road as Completed Line
- Helispot
- Completed Hand Line





Coronado National Forest



Burro Transportation
AZ-CNF-000618
Day Operational Period 7/7/2017
Map Created: 7/6/2017, 8:10:13 PM, By RDC

GIS Acres 25,694
7/6/2017 19:40

