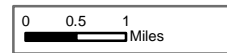


Burro Incident Index Map

GIS Acres 26,089
7/6/2017 21:11



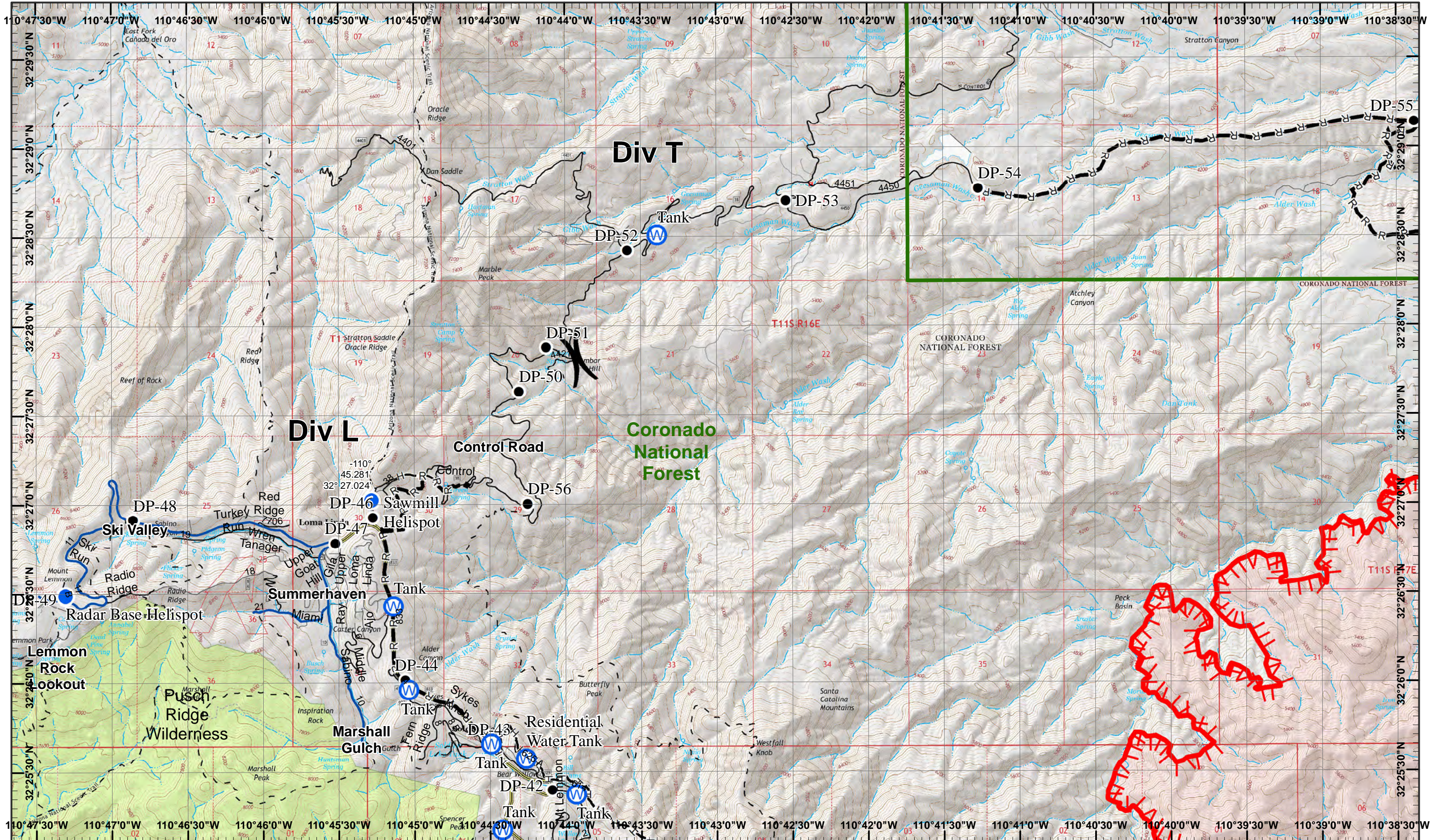
- | | | | |
|------------|-----------------------|-------------------------|----------------------------|
| Dip Site | Fire Origin | Repeater | R—R Road as Completed Line |
| Camp | Helispot | Water Source | XXX Completed Dozer Line |
| Drop Point | Incident Command Post | H—H Completed Hand Line | Planned Fire Line |
| | | Completed Line | Uncontrolled Fire Edge |
| | | | Fire Perimeter |

Day Operational Period 7/8/2017

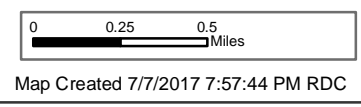
Map Created 7/7/2017 7:54:38 PM RDC

) Division
] Branch





Burro Incident
 GIS Acres 26,089
 7/6/2017 21:11
 Day Operational Period 7/8/2017

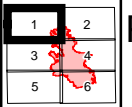


- North
- Drop Point
- Water Source
- Completed Hand Line
- Planned Fire Line
- Uncontrolled Fire Edge
- Road as Completed Line



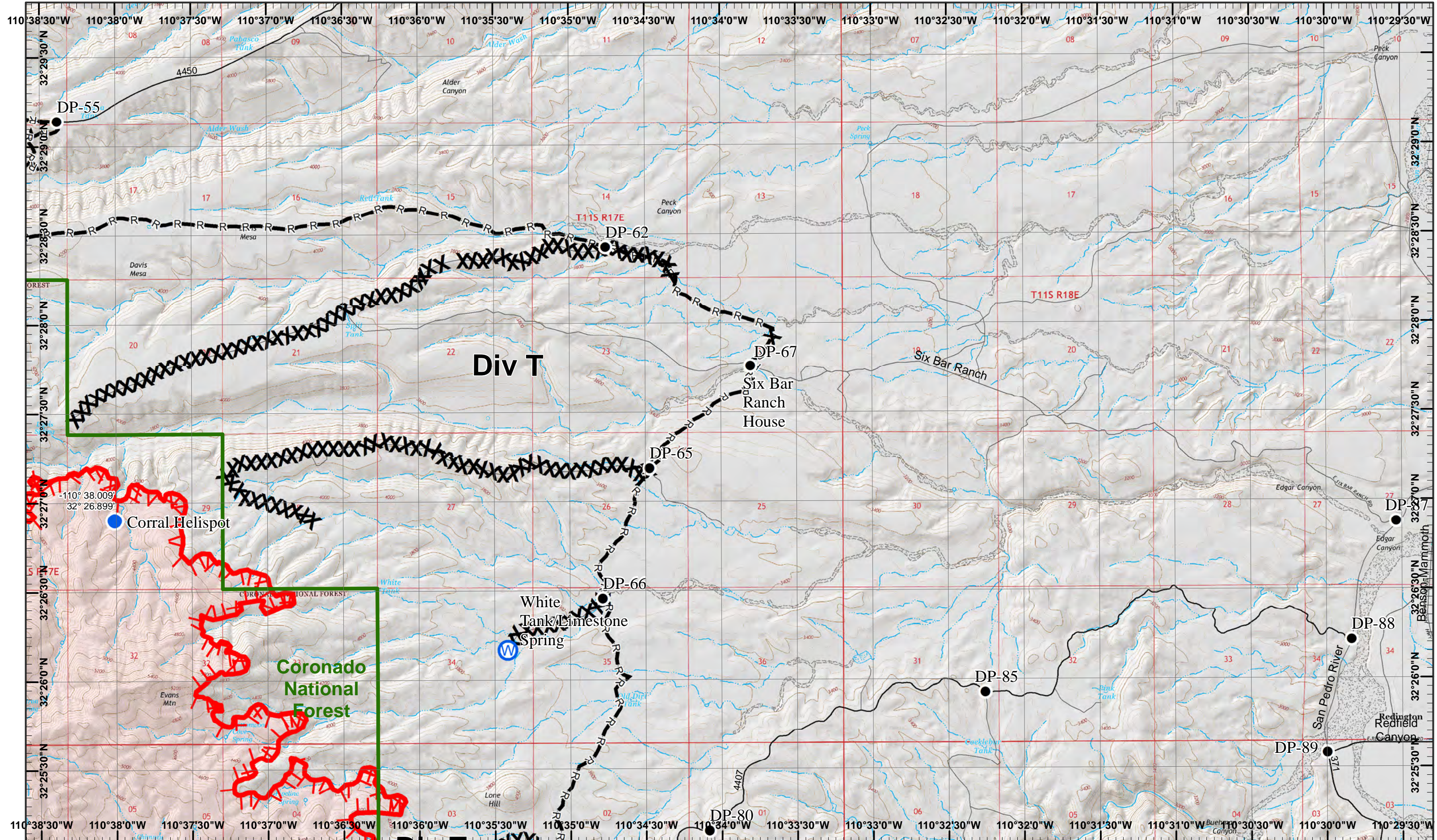
Neighboring Pages

West Page NA	North Page NA	East Page 2
	South Page 3	



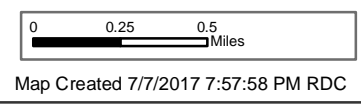
Page 1
)(Division
 || Branch





Burro Incident
 Day Operational Period 7/8/2017

GIS Acres 26,089
 7/6/2017 21:11



- North
- Drop Point
- Water Source
- Uncontrolled Fire Edge
- Road as Completed Line
- Completed Dozer Line

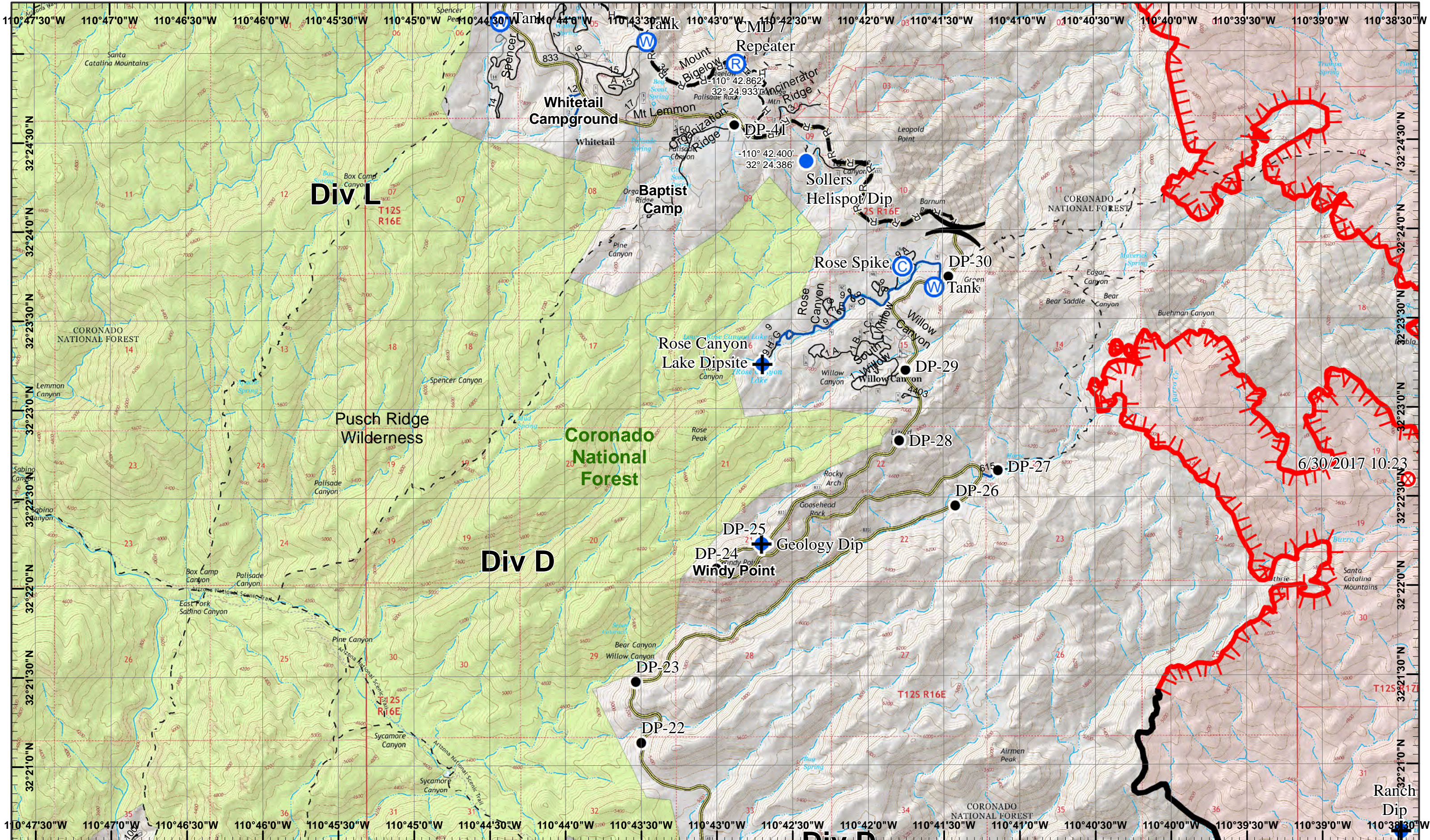


Neighboring Pages
 West Page 1 North Page NA East Page NA
 South Page 4



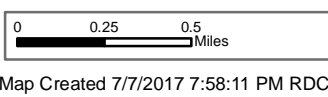
Page 2
)(Division
 || Branch





Burro Incident
Day Operational Period 7/8/2017

GIS Acres 26,089
7/6/2017 21:11



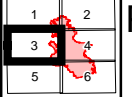
Fire Origin

Completed Hand Line

Uncontrolled Fire Edge



Neighboring Pages
West Page NA North Page 1
South Page 5 East Page 4

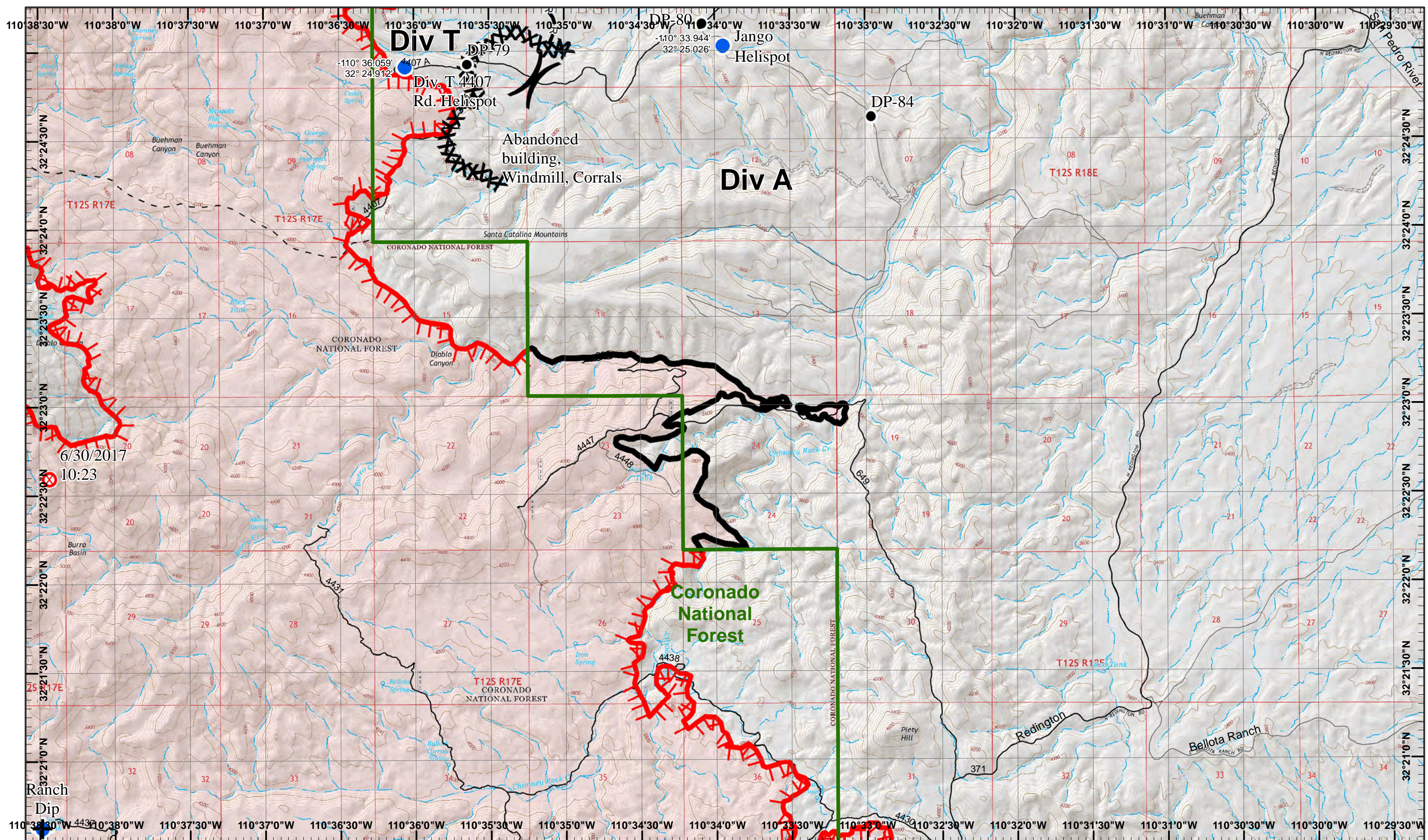


Page 3
) Division
[Branch

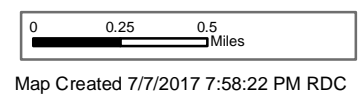


6/30/2017 10:23

Ranch Dip



Burro Incident
 Day Operational Period 7/8/2017



- North Arrow
- Dip Site
- Drop Point
- Helispot
- R-Road as Completed Line
- Uncontrolled Fire Edge
- Fire Origin
- Completed Dozer Line

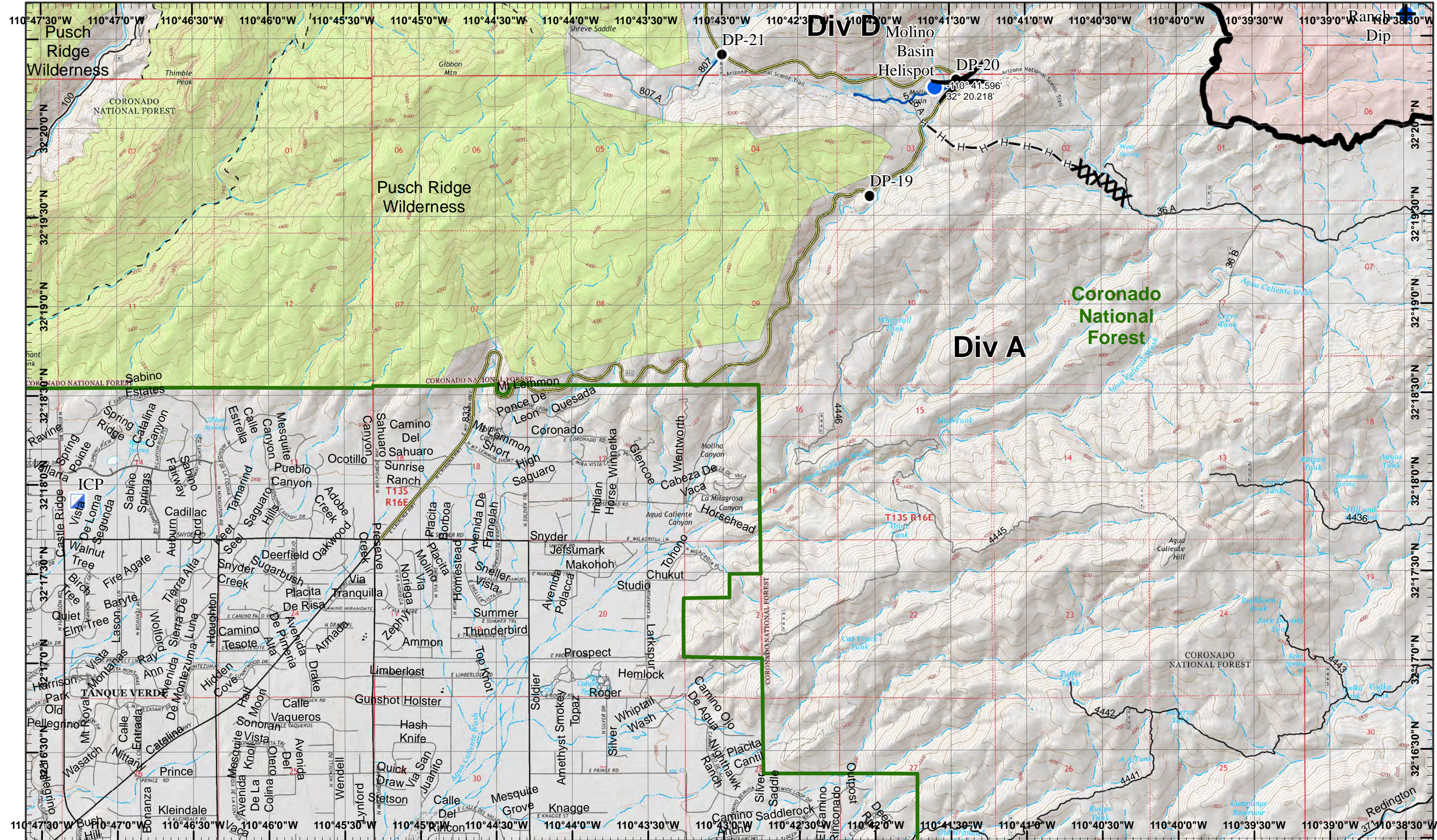


Neighboring Pages
 West Page 3 North Page 2 East Page NA
 South Page 6

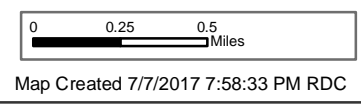
1	2
3	4
5	6

Page 4
 Division
 Branch





Burro Incident
 Day Operational Period 7/8/2017



- North
- Dip Site
- Drop Point
- Incident Command Post
- Completed Line
- Helispot
- Completed Hand Line
- Completed Dozer Line

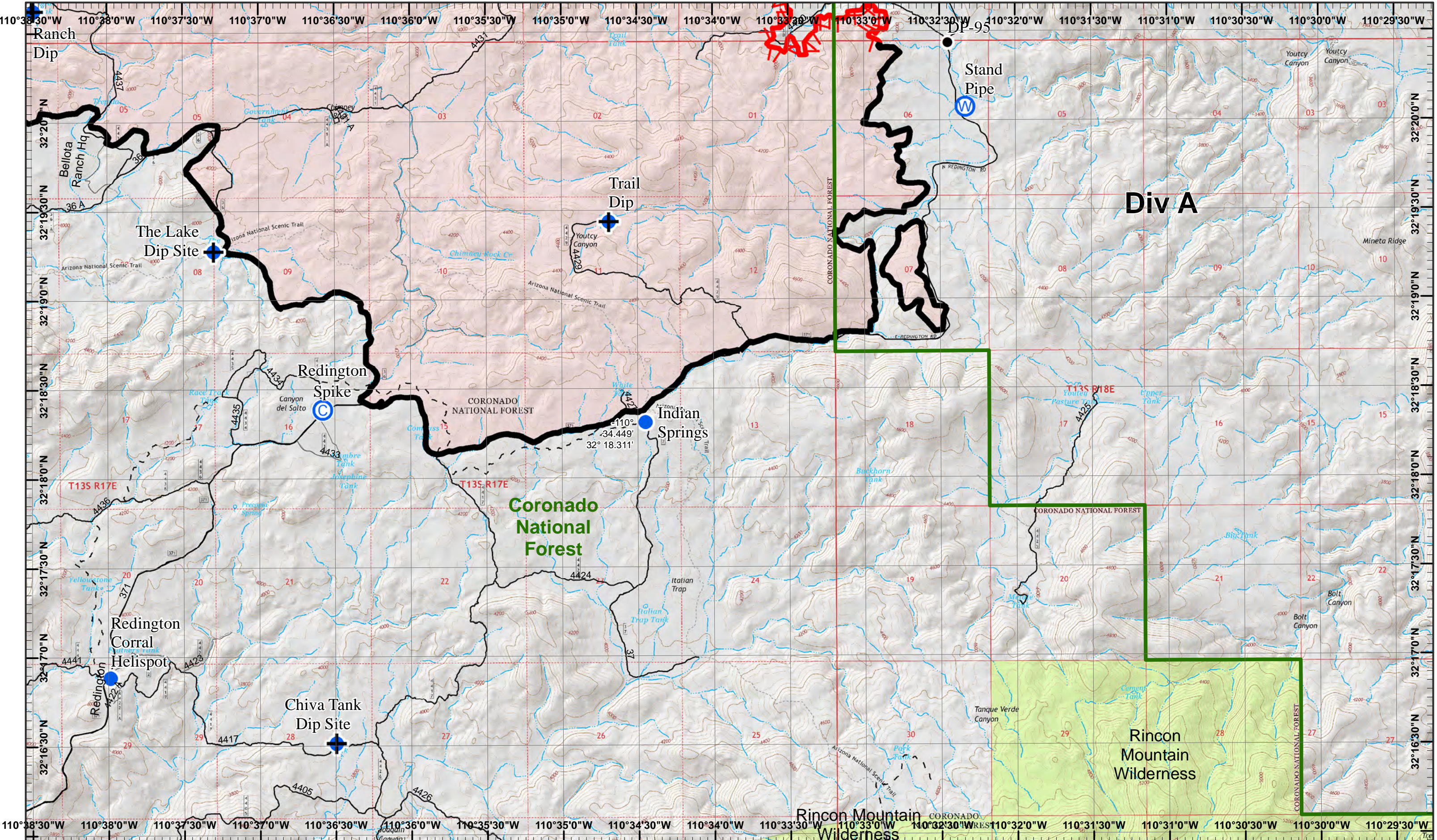


Neighboring Pages
 West Page NA North Page 3 East Page 6
 South Page NA

1	2
3	4
5	6

Page 5
)(Division
 || Branch





Burro Incident
 Day Operational Period 7/8/2017

GIS Acres 26,089
 7/6/2017 21:11
 Map Created 7/7/2017 7:58:45 PM RDC

- North
- Dip Site
- Camp
- Drop Point
- Water Source
- Uncontrolled Fire Edge
- Helispot
- Completed Line

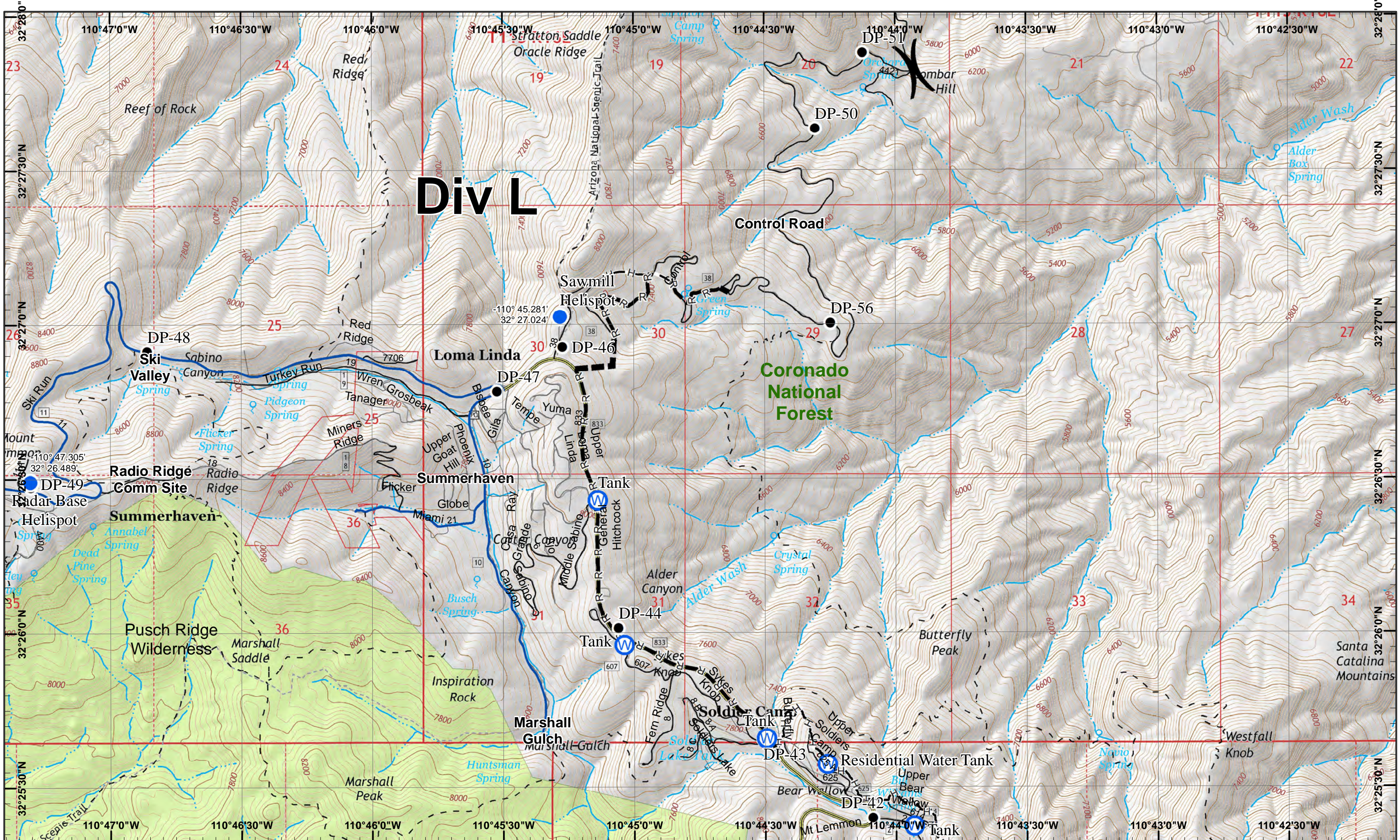


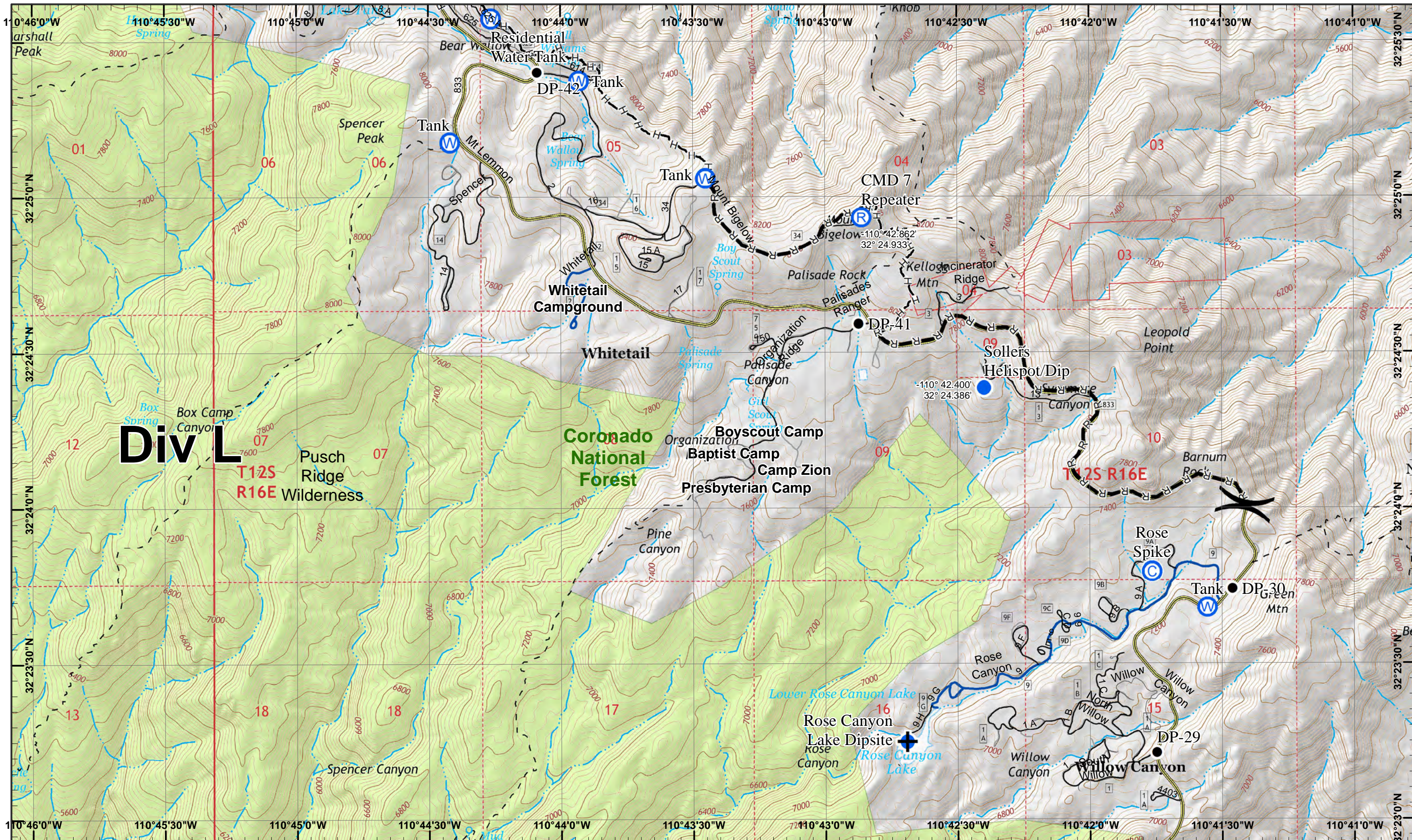
Neighboring Pages
 West Page 5 North Page 4 East Page NA
 South Page NA

1	2
3	4
5	6

Page 6
)(Division
 || Branch







Div L

T12S R16E

Coronado National Forest

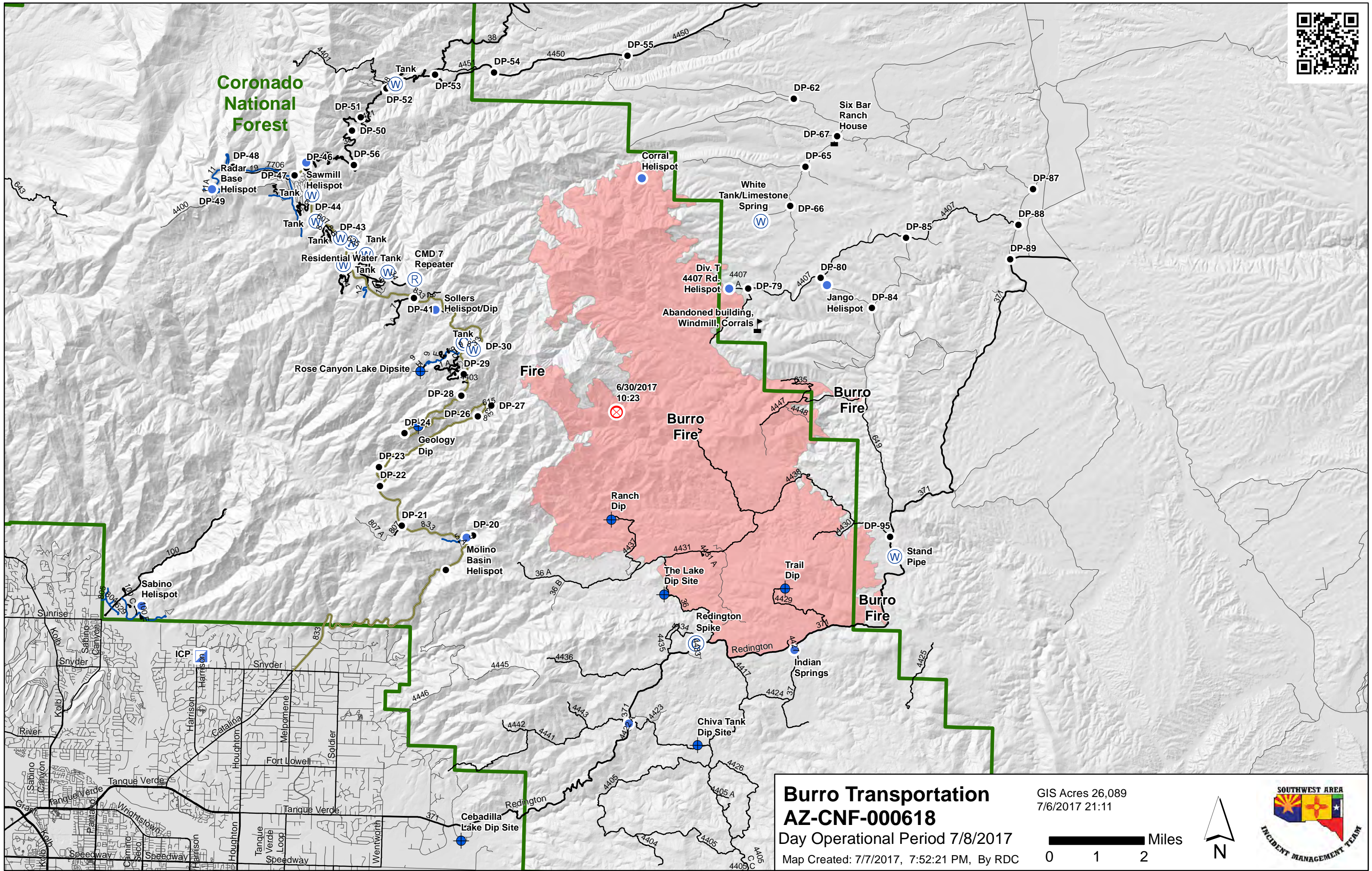
Pusch Ridge Wilderness

T12S R16E





Coronado National Forest



Fire

Burro Fire

Burro Fire

Burro Fire

Burro Transportation AZ-CNF-000618

Day Operational Period 7/8/2017

Map Created: 7/7/2017, 7:52:21 PM, By RDC

GIS Acres 26,089
7/6/2017 21:11

