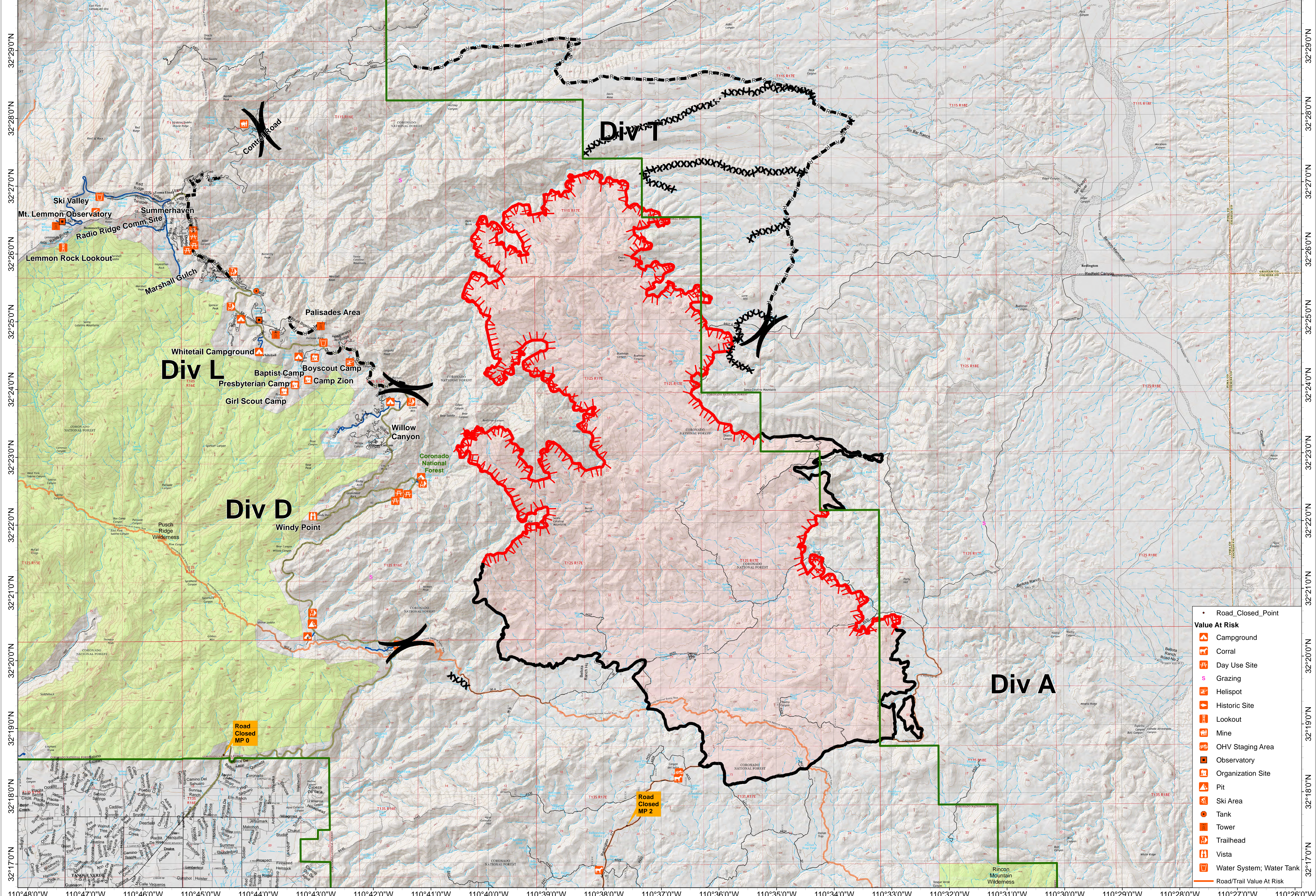


110°48'0"W 110°47'0"W 110°46'0"W 110°45'0"W 110°44'0"W 110°43'0"W 110°42'0"W 110°41'0"W 110°40'0"W 110°39'0"W 110°38'0"W 110°37'0"W 110°36'0"W 110°35'0"W 110°34'0"W 110°33'0"W 110°32'0"W 110°31'0"W 110°30'0"W 110°29'0"W 110°28'0"W 110°27'0"W 110°26'0"W



32°29'0"N
32°28'0"N
32°27'0"N
32°26'0"N
32°25'0"N
32°24'0"N
32°23'0"N
32°22'0"N
32°21'0"N
32°20'0"N
32°19'0"N
32°18'0"N
32°17'0"N

32°29'0"N
32°28'0"N
32°27'0"N
32°26'0"N
32°25'0"N
32°24'0"N
32°23'0"N
32°22'0"N
32°21'0"N
32°20'0"N
32°19'0"N
32°18'0"N
32°17'0"N

Burro Public Briefing
AZ-CNF-000618
 Day Operational Period 7/8/2017

GIS Acres 26,089
 7/6/2017 21:11

0 0.5 1 2 Miles
 0 0.5 1 2 Kilometers

Map Created: 7/7/2017, 8:30:24 PM, By RDC

1:30,000

Administrative Forest
 Completed Line
 Road as Completed Line
 XXXX Completed Dozer Line
 Uncontrolled Fire Edge
 Fire Perimeter
 Wilderness
 Planned Fire Line

Road_Closed_Point
 Campground
 Corral
 Day Use Site
 Grazing
 Helispot
 Historic Site
 Lookout
 Mine
 OHV Staging Area
 Observatory
 Organization Site
 Pit
 Ski Area
 Tank
 Tower
 Trailhead
 Vista
 Water System; Water Tank
 Road/Trail Value At Risk

(Division
) Branch

) (Division
) Branch