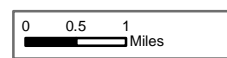


Burro Incident Index Map

GIS Acres 26,659
7/8/2017 05:57



- Dip Site
- Camp
- Drop Point

- Fire Origin
- Helispot
- Incident Command Post

- Repeater
- Water Source
- Completed Hand Line
- Completed Line

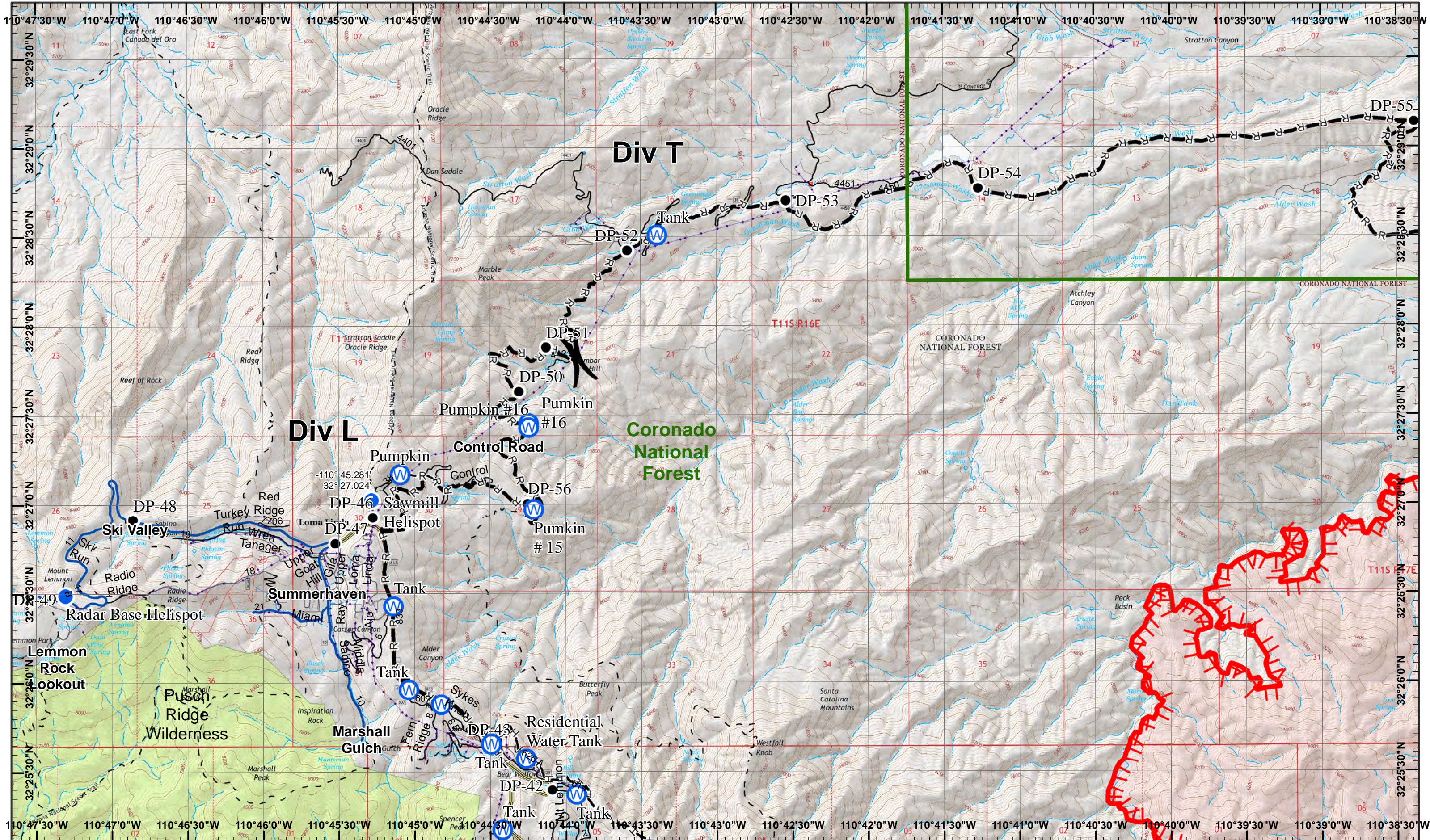
- Road as Completed Line
- Completed Dozer Line
- Planned Fire Line
- Uncontrolled Fire Edge
- Fire Perimeter

Day Operational Period 7/9/2017

Map Created 7/8/2017 7:57:05 PM RDC

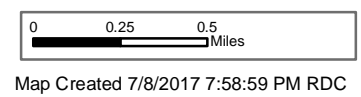
) Division
] Branch





Burro Incident
 Day Operational Period 7/9/2017

GIS Acres 26,659
 7/8/2017 05:57



- Drop Point
- ⊕ Water Source
- R — R Road as Completed Line
- Planned Fire Line
- Helispot
- H — H Completed Hand Line
- Uncontrolled Fire Edge



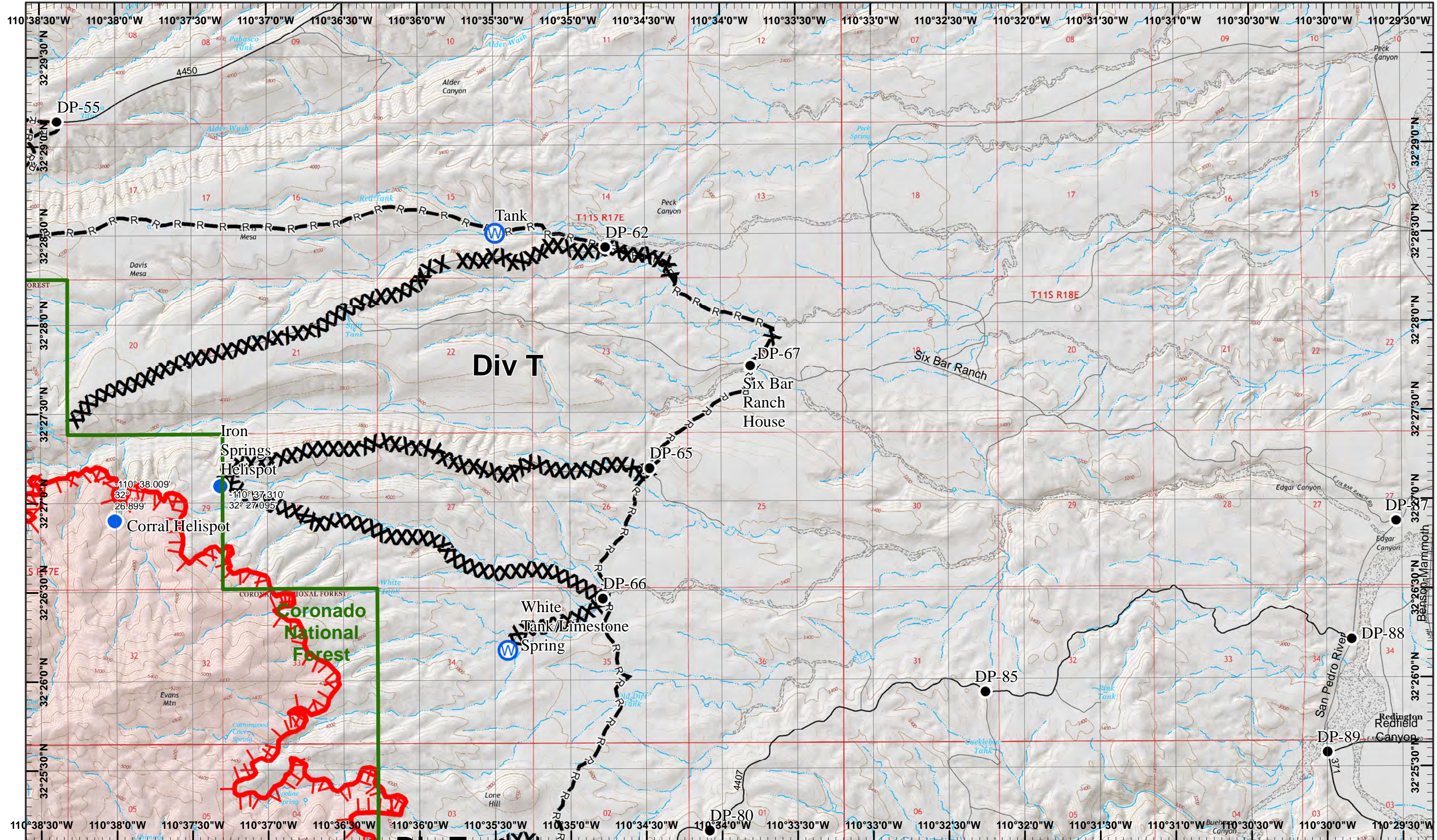
Neighboring Pages

West Page NA	North Page NA	East Page 2
	South Page 3	



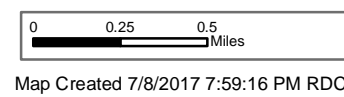
Page 1
)(Division
 || Branch





Burro Incident
 Day Operational Period 7/9/2017

GIS Acres 26,659
 7/8/2017 05:57



- North
- Drop Point
- Water Source
- Completed Dozer Line
- Helispot
- Road as Completed Line
- Uncontrolled Fire Edge

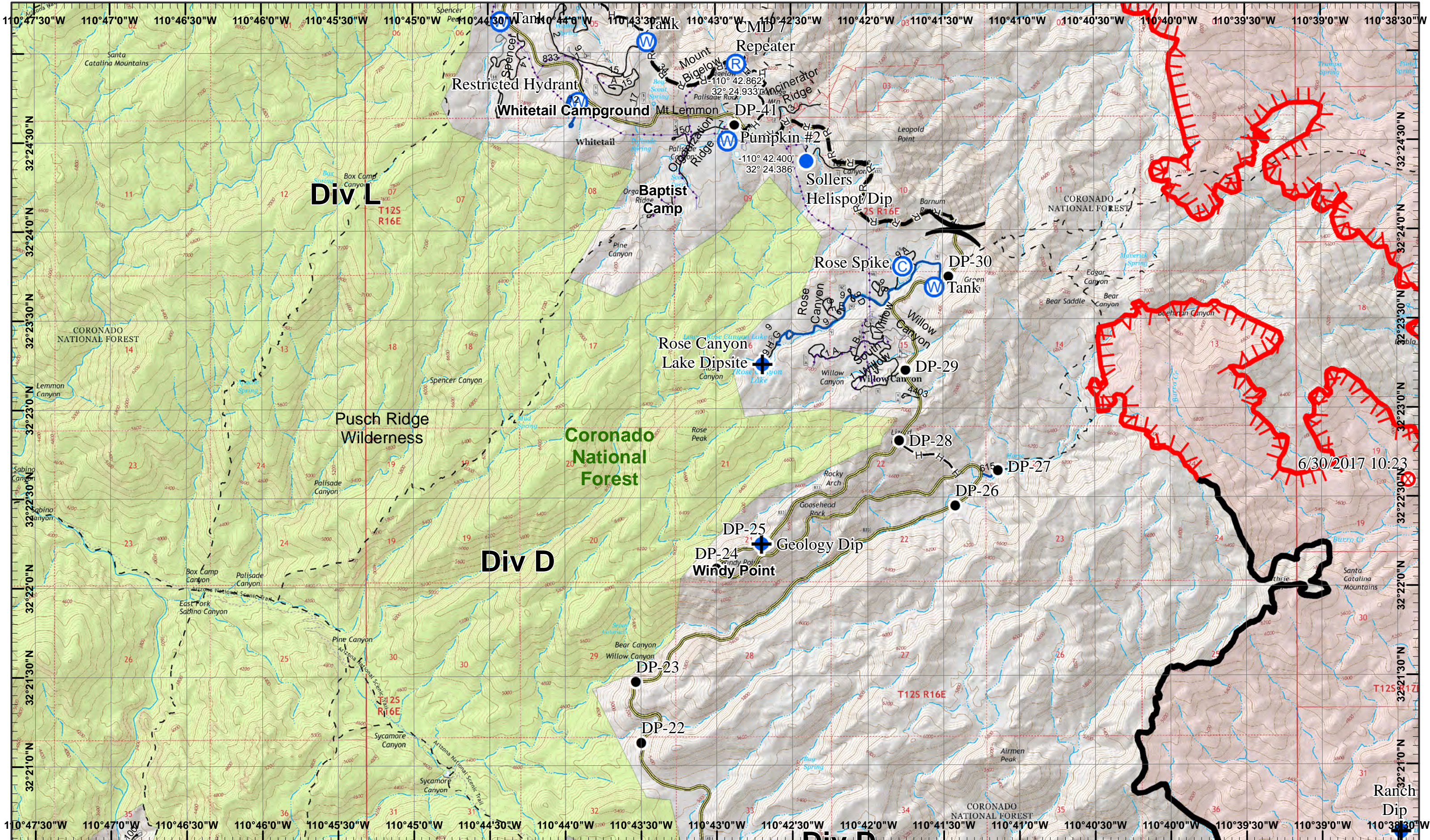


Neighboring Pages
 West Page 1 North Page NA East Page NA
 South Page 4



Page 2
)(Division
 || Branch

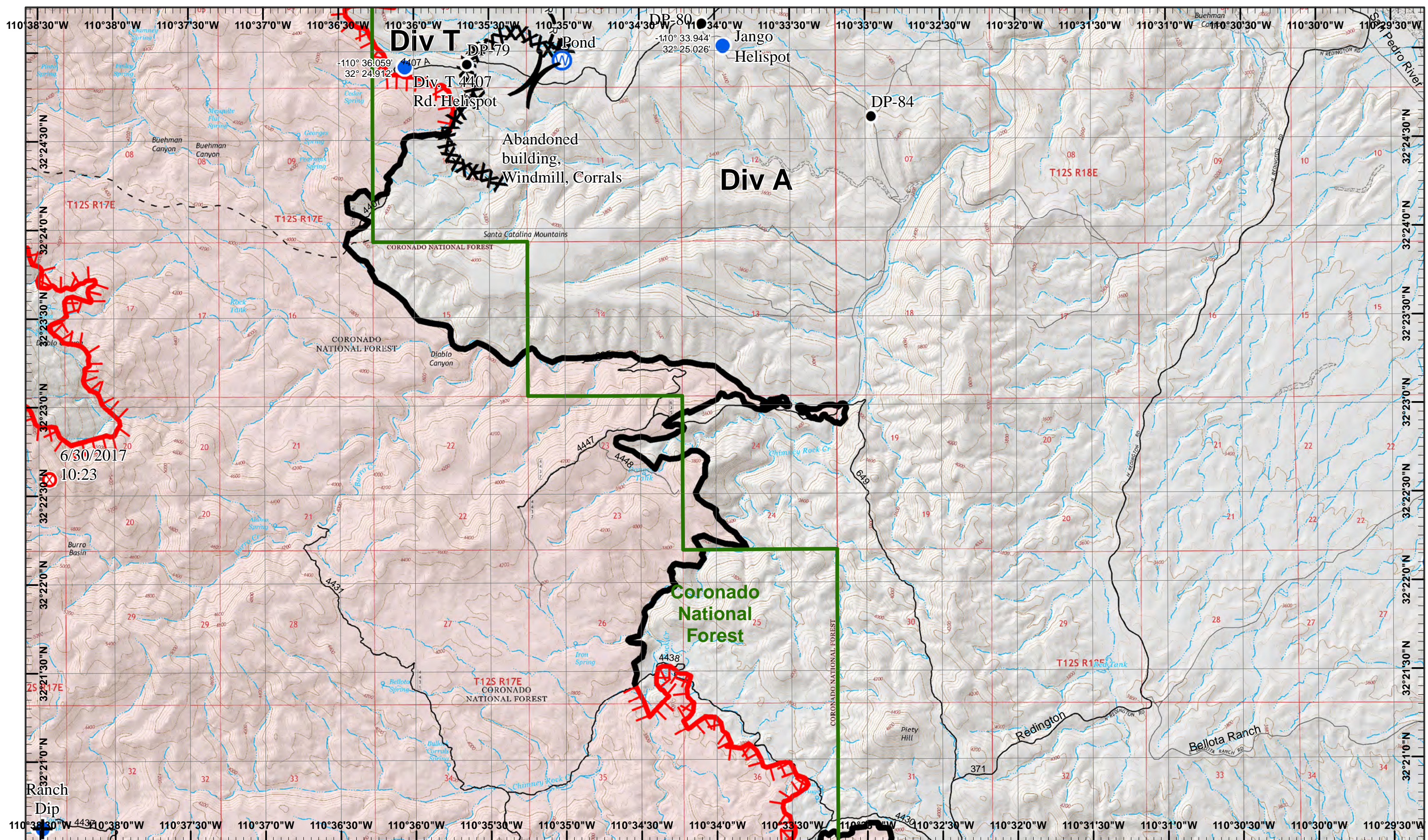




Dip Site
 Camp
 Drop Point
 Helispot
 Repeater
 Water Source
 Completed Line
 Road as Completed Line
 Uncontrolled Fire Edge

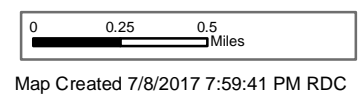
Fire Origin
 Completed Hand Line





Burro Incident
 Day Operational Period 7/9/2017

GIS Acres 26,659
 7/8/2017 05:57



Dip Site

Drop Point
 Fire Origin

Helispot

Water Source
 Completed Line

R Road as Completed Line
 Completed Dozer Line

Uncontrolled Fire Edge

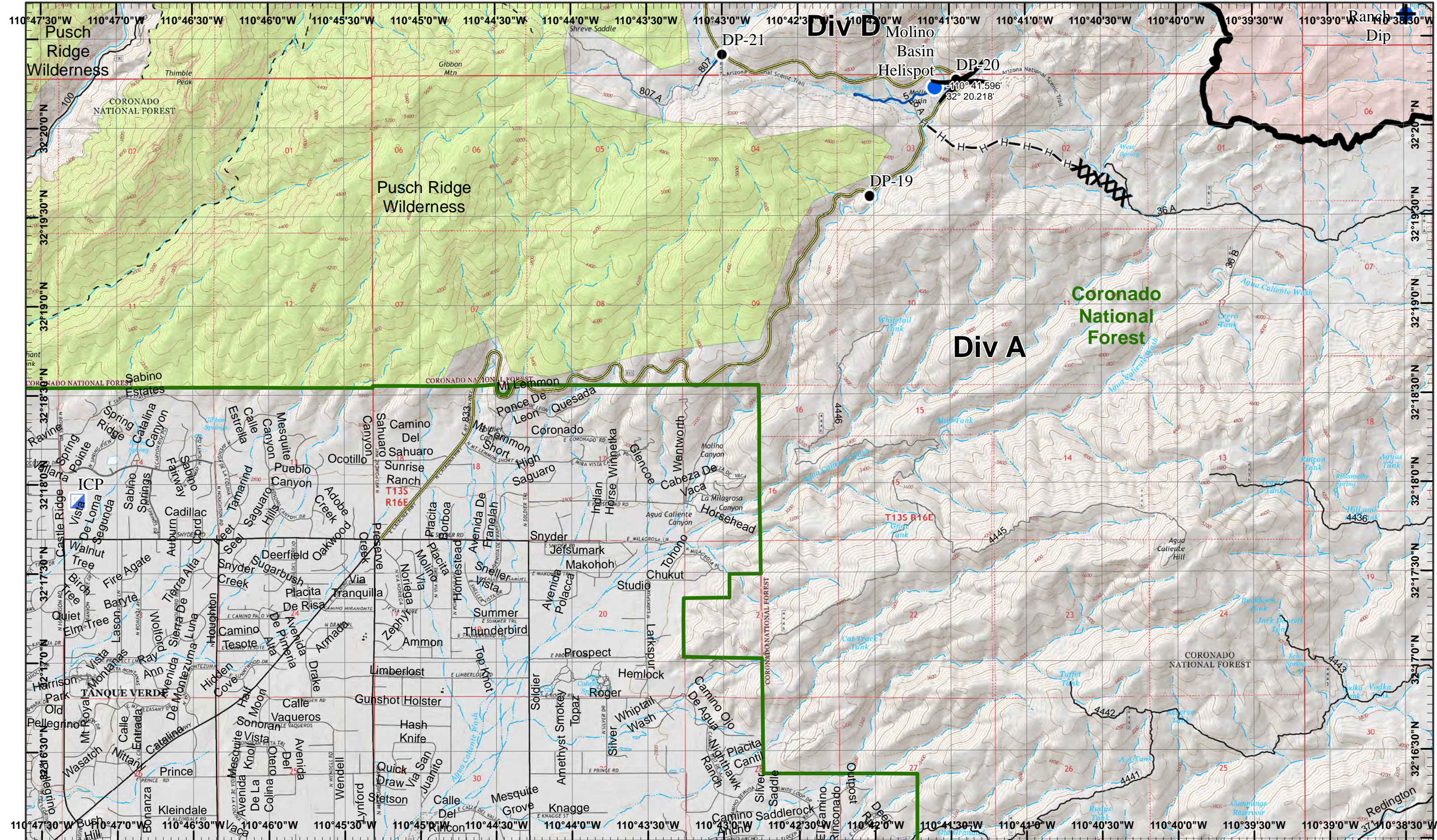


Neighboring Pages
 West Page 3 North Page 2 East Page NA
 South Page 6

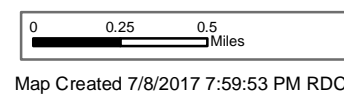
1	2
3	4
5	6

Page 4
 Division
 Branch





Burro Incident
 Day Operational Period 7/9/2017



- Dip Site
- Drop Point
- Incident Command Post
- Completed Line
- Helispot
- Completed Hand Line
- Completed Dozer Line



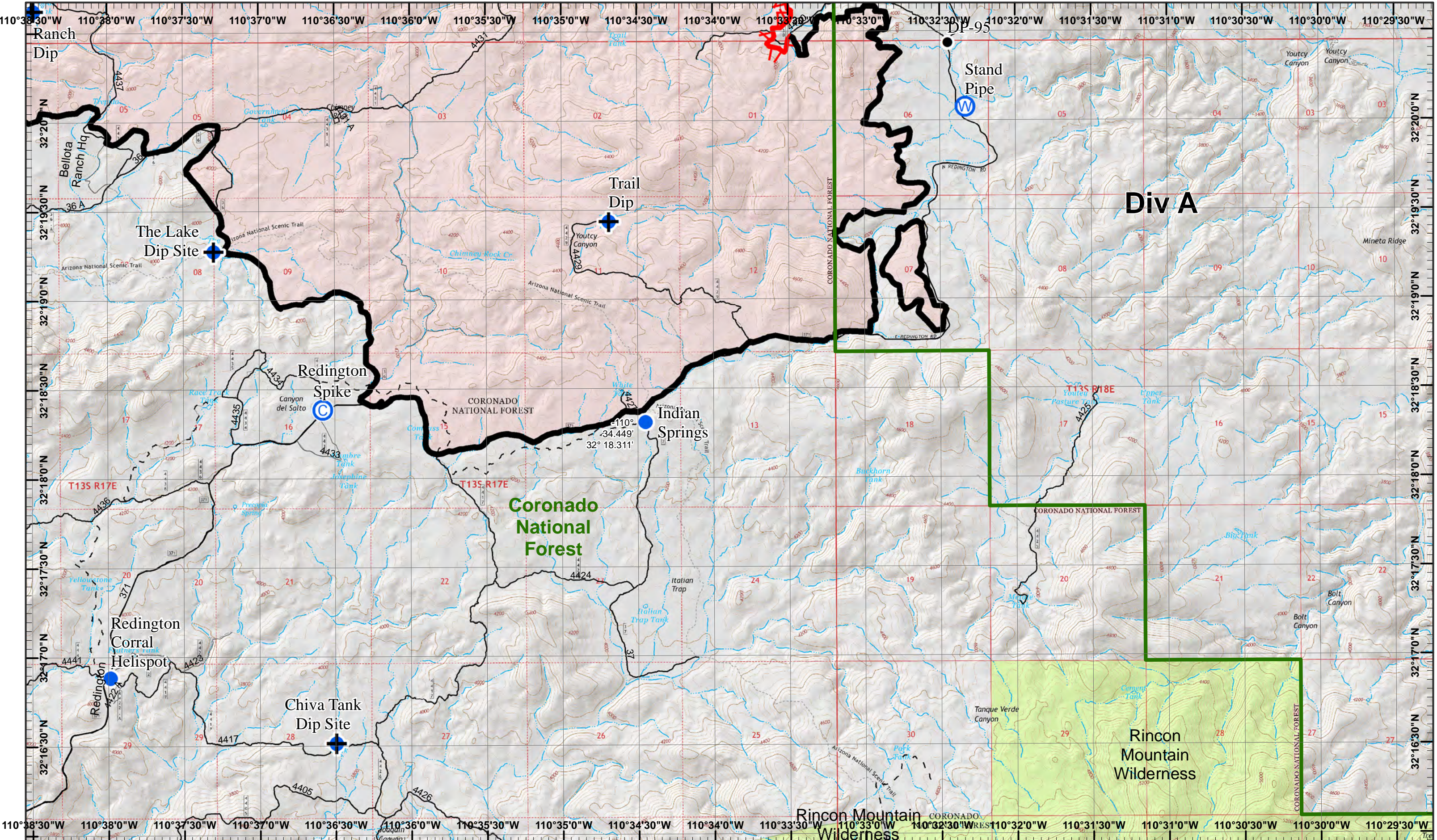
Neighboring Pages

West Page NA	North Page 3	East Page 6
	South Page NA	

1	2
3	4
5	6

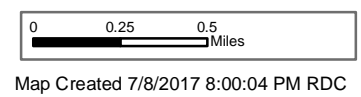
Page 5
)(Division
 || Branch





Burro Incident
 Day Operational Period 7/9/2017

GIS Acres 26,659
 7/8/2017 05:57



- North
- Dip Site
- Camp
- Drop Point
- Water Source
- Uncontrolled Fire Edge
- Helispot
- Completed Line

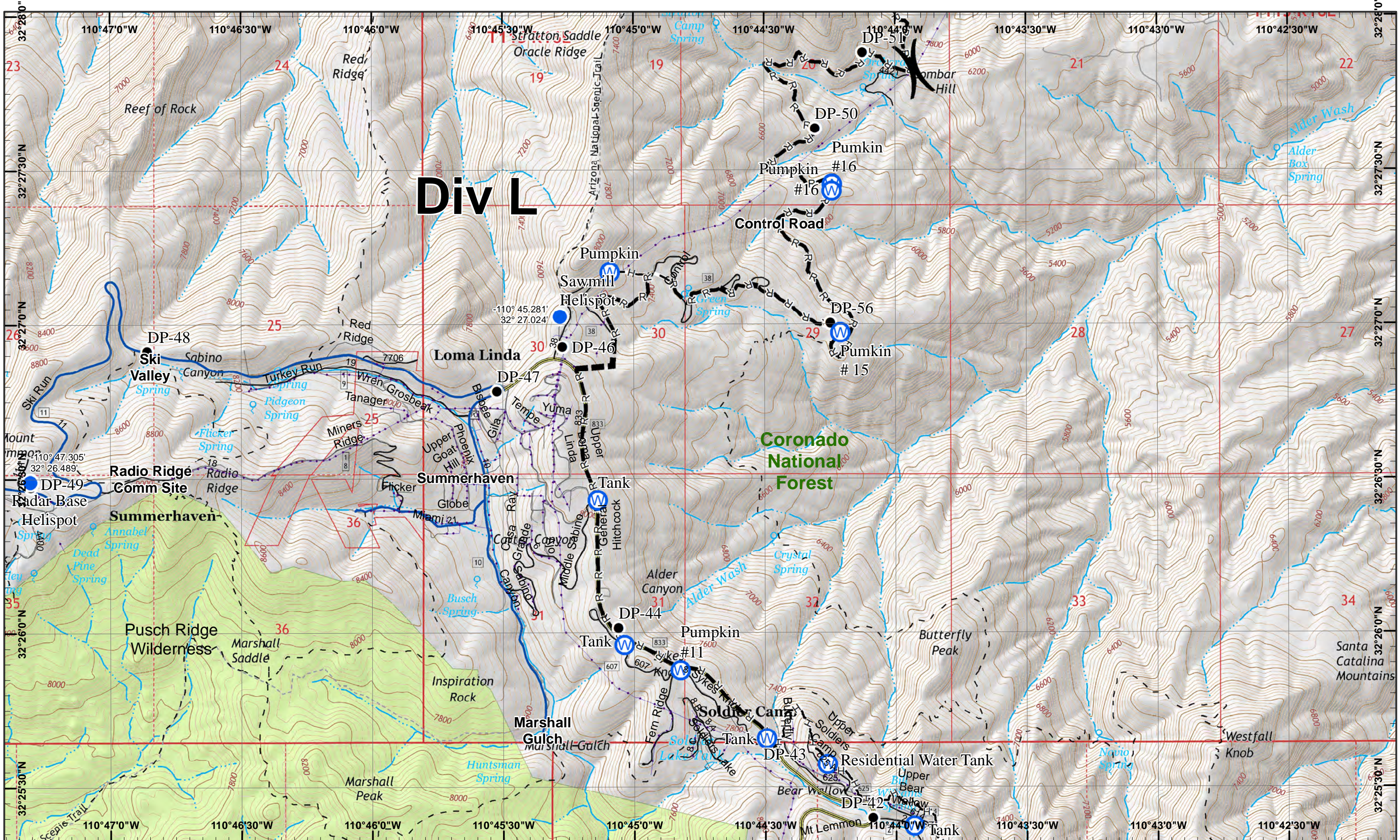


Neighboring Pages
 West Page 5 North Page 4 East Page NA
 South Page NA

1	2
3	4
5	6

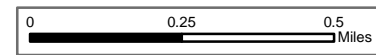
Page 6
)(Division
 || Branch





Div L

GIS Acres 26,659
 7/8/2017 05:57

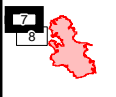


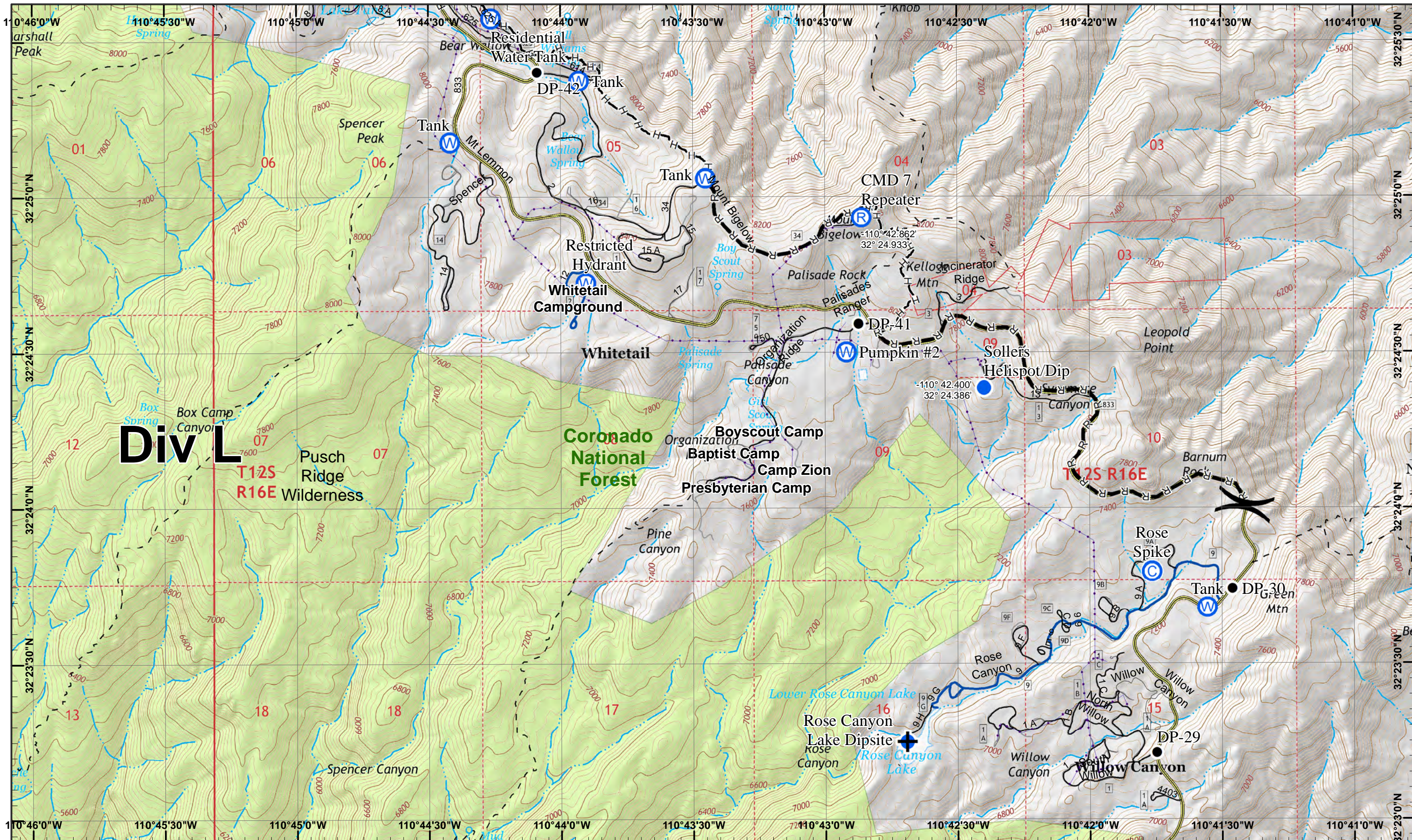
Map Created 7/8/2017 8:02:41 PM RDC



- Drop Point
- ⊙ Water Source
- ⊙ Helispot
- H Completed Hand Line

- R Road as Completed Line
- Planned Fire Line





Div L

**T12S
R16E**

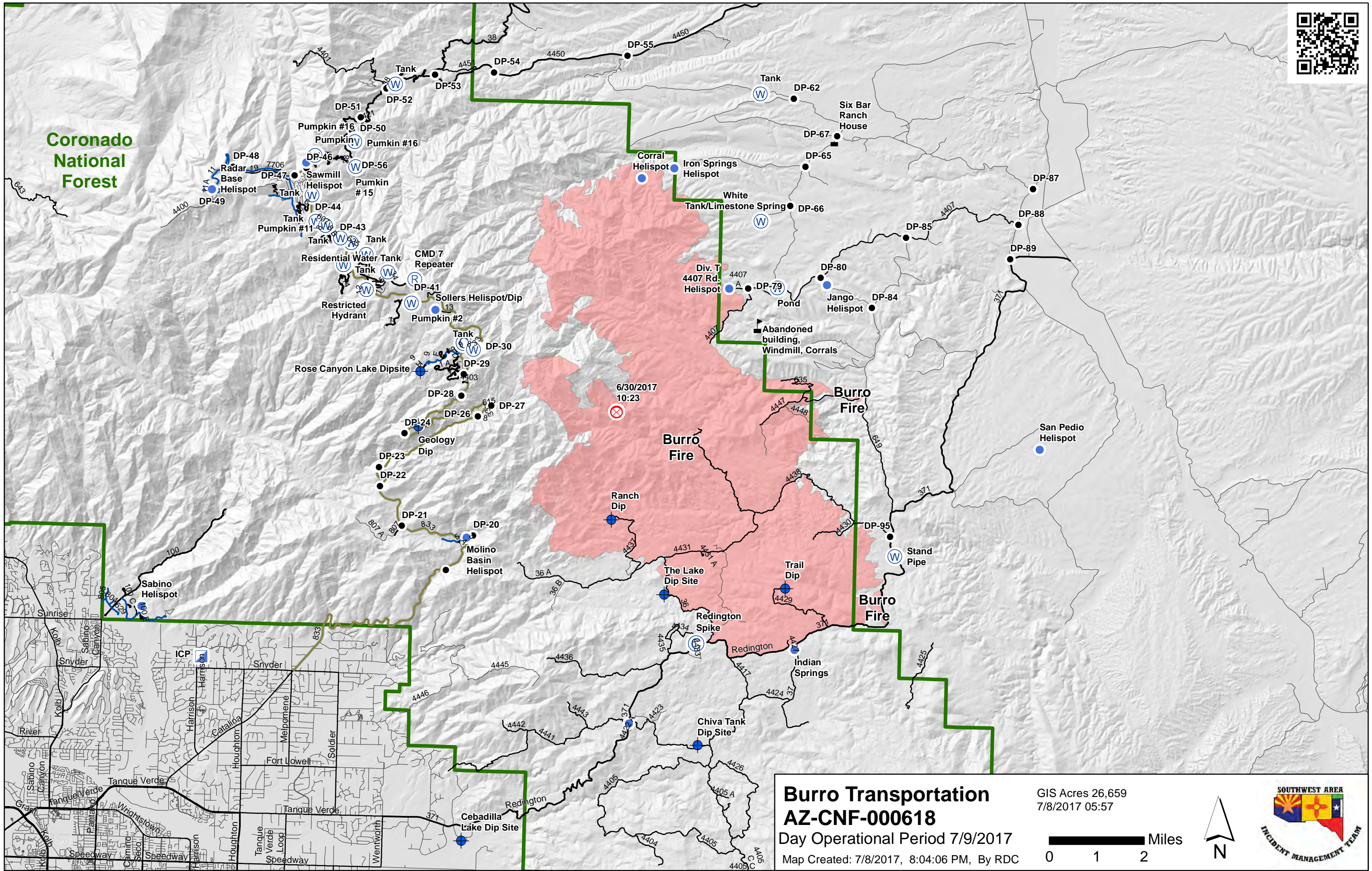
**Coronado
National
Forest**

T12S R16E





Coronado National Forest



Burro Transportation
AZ-CNF-000618
Day Operational Period 7/9/2017
Map Created: 7/8/2017, 8:04:06 PM, By RDC

GIS Acres 26,659
7/8/2017 05:57

