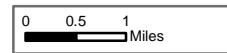


Burro Incident Index Map

GIS Acres 27,238
7/9/2017 10:00



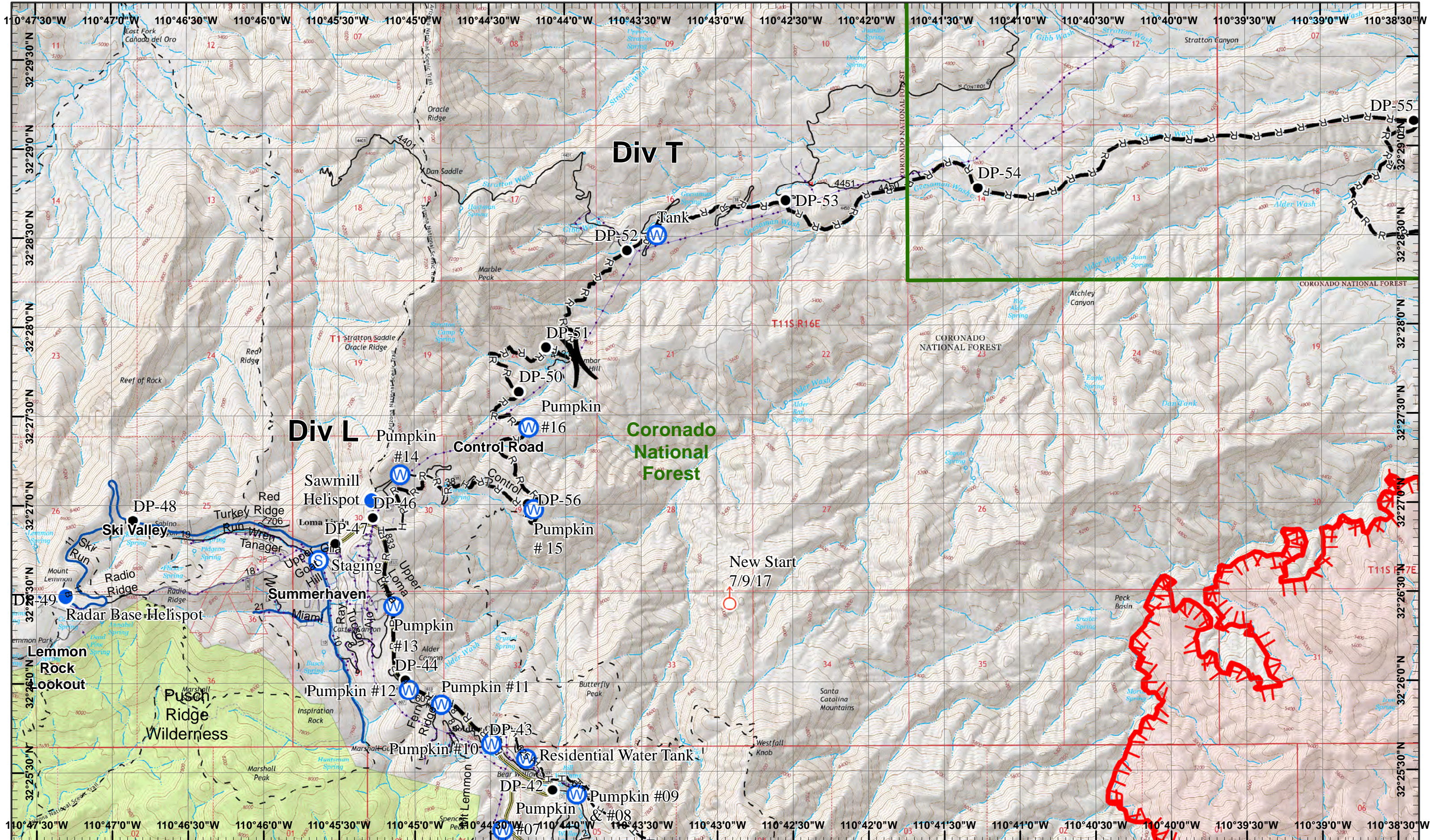
- | | | | | |
|------------|-----------------------|--------------|------------------------|------------------------|
| Dip Site | Fire Origin | Repeater | Water Source | Completed Dozer Line |
| Camp | Helispot | Spot Fire | Completed Hand Line | Planned Fire Line |
| Drop Point | Incident Command Post | Staging Area | Completed Line | Uncontrolled Fire Edge |
| | | | Road as Completed Line | Fire Perimeter |

Day Operational Period 7/10/2017

Map Created 7/9/2017 7:46:58 PM RDC



) Division
] Branch



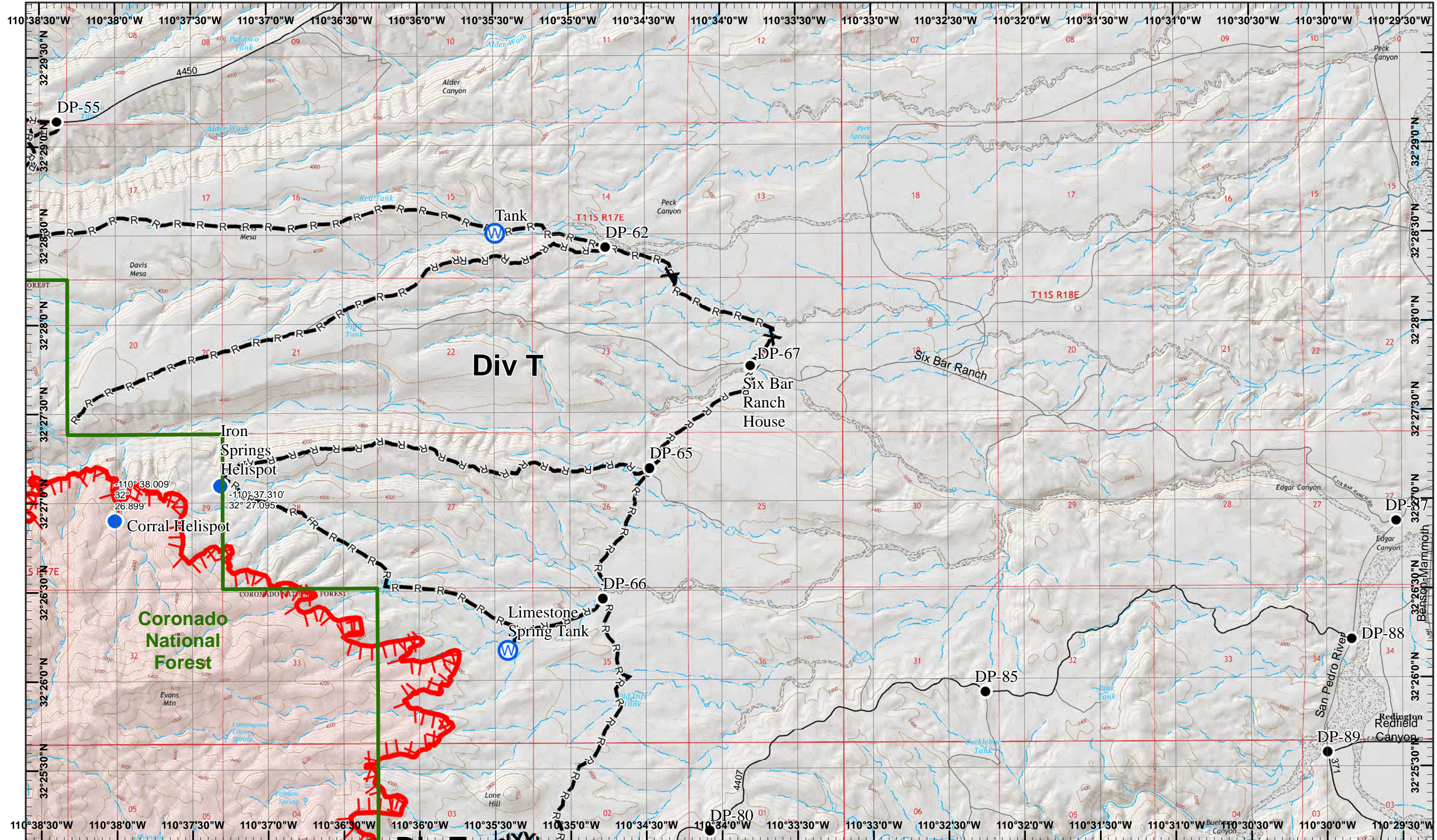
Burro Incident
 Day Operational Period 7/10/2017

GIS Acres 27,238
 7/9/2017 10:00
 Map Created 7/9/2017 7:53:52 PM RDC

Drop Point
 Spot Fire
 Staging Area
 Water Source
 Road as Completed Line
 Planned Fire Line

Helispot
 Completed Hand Line
 Uncontrolled Fire Edge

Page 1
)(Division
 || Branch



Burro Incident
 Day Operational Period 7/10/2017

GIS Acres 27,238
 7/9/2017 10:00
 Map Created 7/9/2017 7:54:09 PM RDC

Drop Point
 Water Source
 Completed Dozer Line
 Uncontrolled Fire Edge

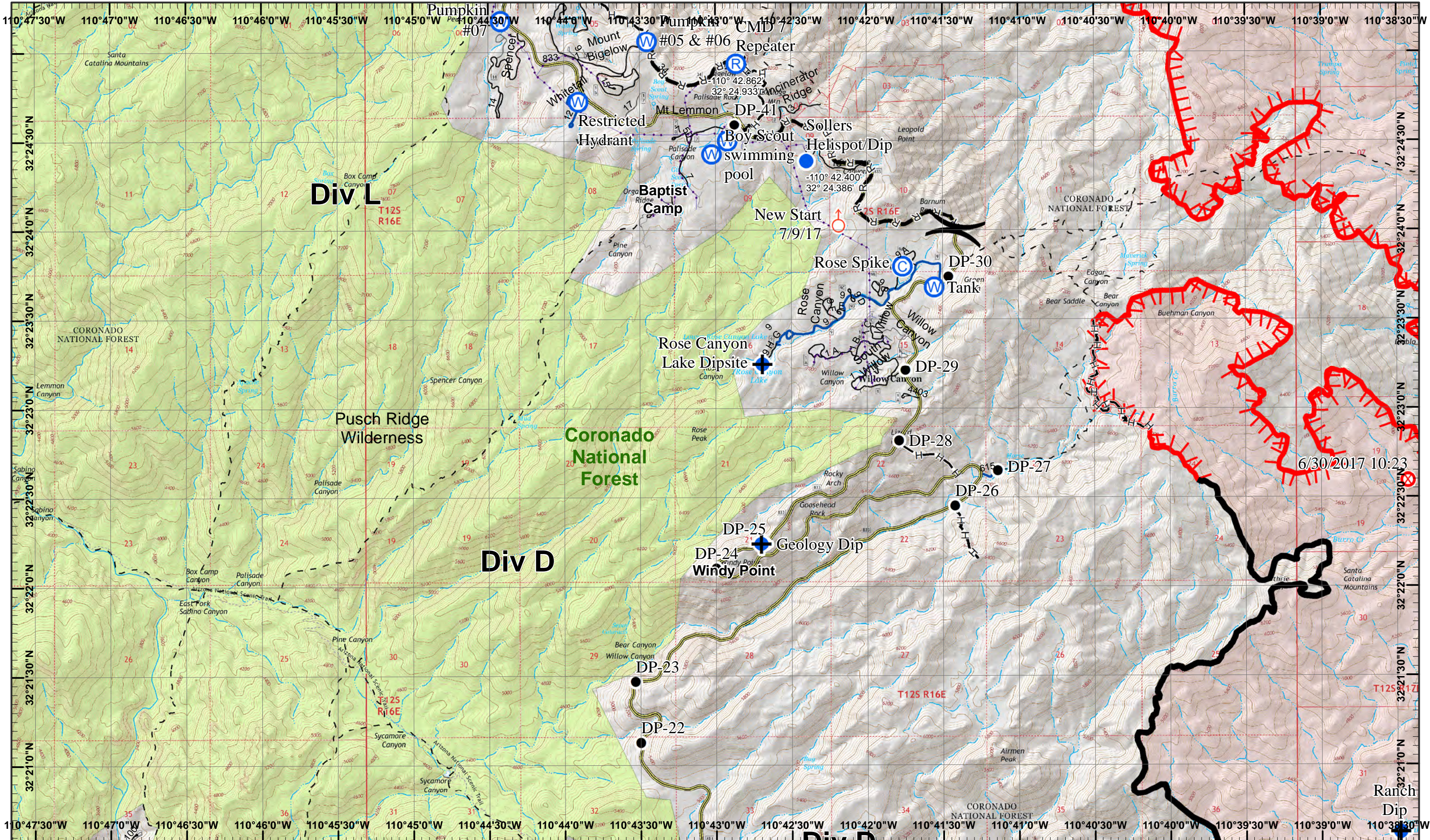
Helispot
 Road as Completed Line



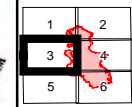
1	2
3	4
5	6

Page 2
)(Division
 || Branch

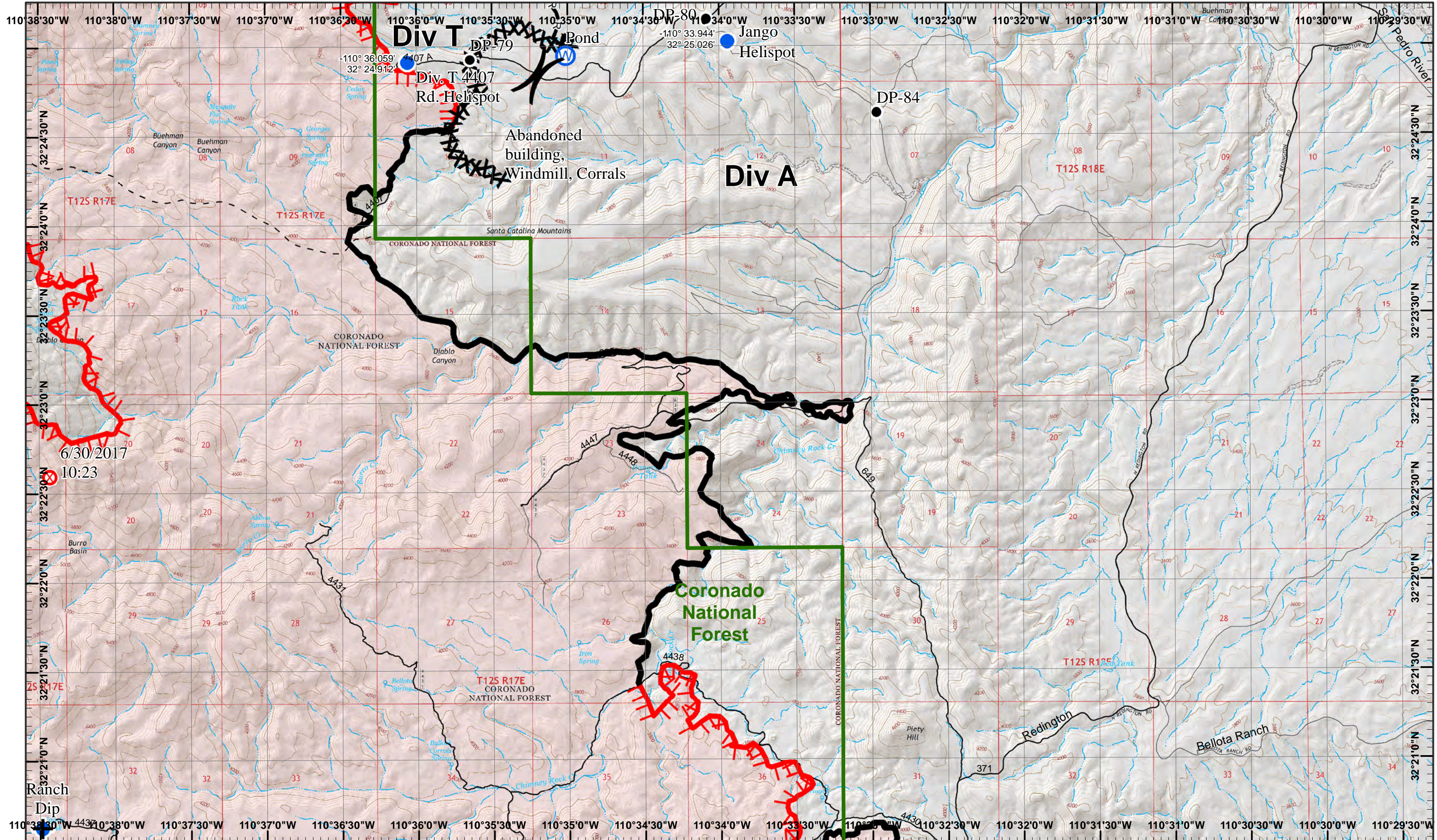




	Dip Site	Camp	Drop Point	Helispot	Repeater	Spot Fire	Water Source	Completed Line
	Fire Origin		Uncontrolled Fire Edge					R Road as Completed Line
								H Completed Hand Line



6/30/2017 10:23

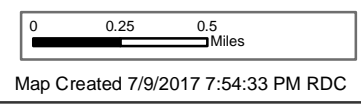


Div T

Div A

Coronado National Forest

Burro Incident
 GIS Acres 27,238
 7/9/2017 10:00
 Day Operational Period 7/10/2017



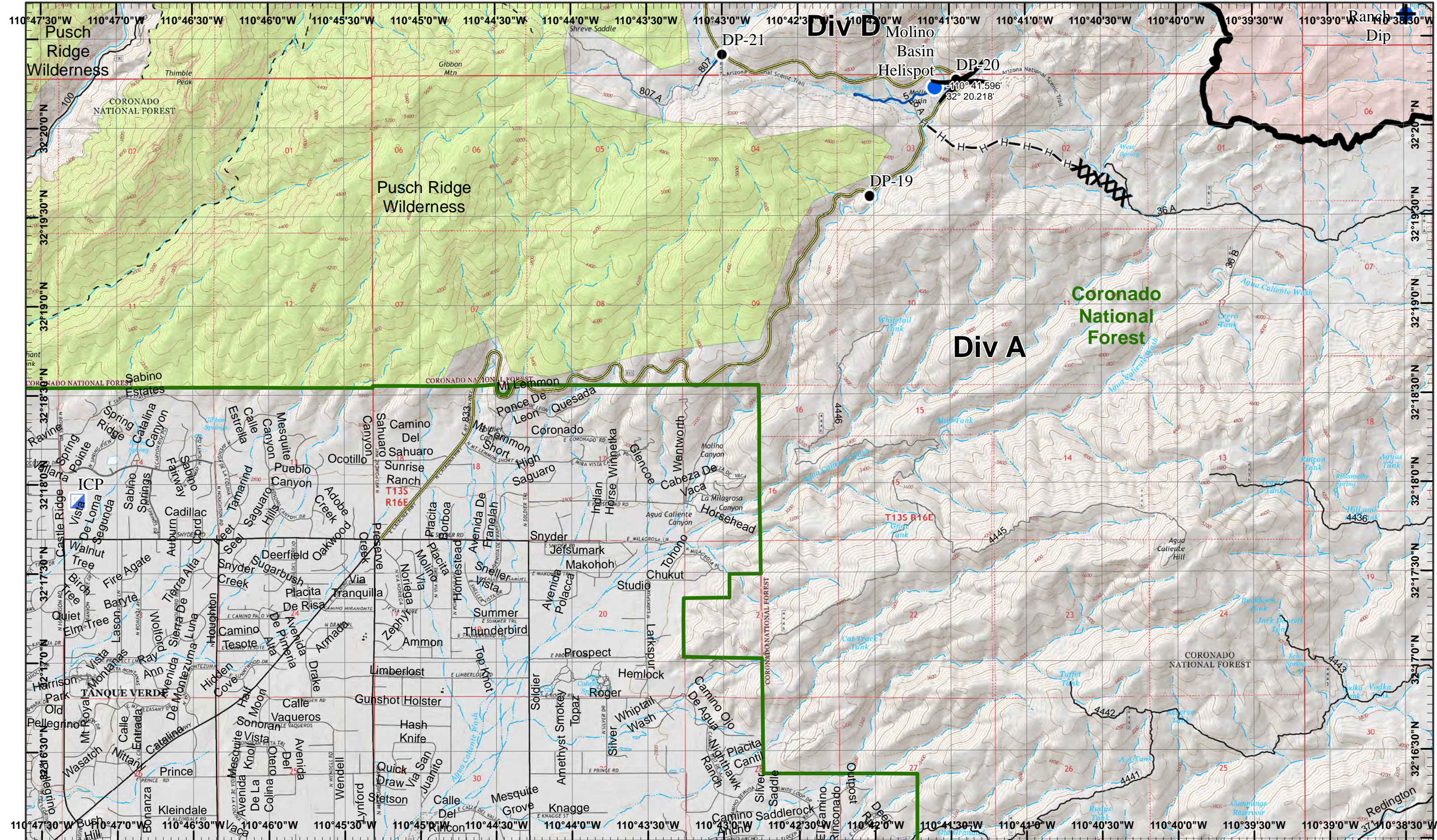
- North Arrow
- Dip Site
- Drop Point
- Helispot
- Water Source
- R—R Road as Completed Line
- Uncontrolled Fire Edge
- Fire Origin
- Completed Line
- XXX Completed Dozer Line



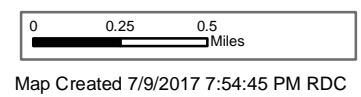
1	2
3	4
5	6

Page 4
) Division
 [Branch





Burro Incident
 GIS Acres 27,238
 7/9/2017 10:00
 Day Operational Period 7/10/2017



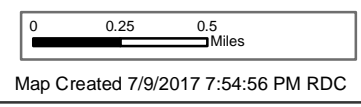
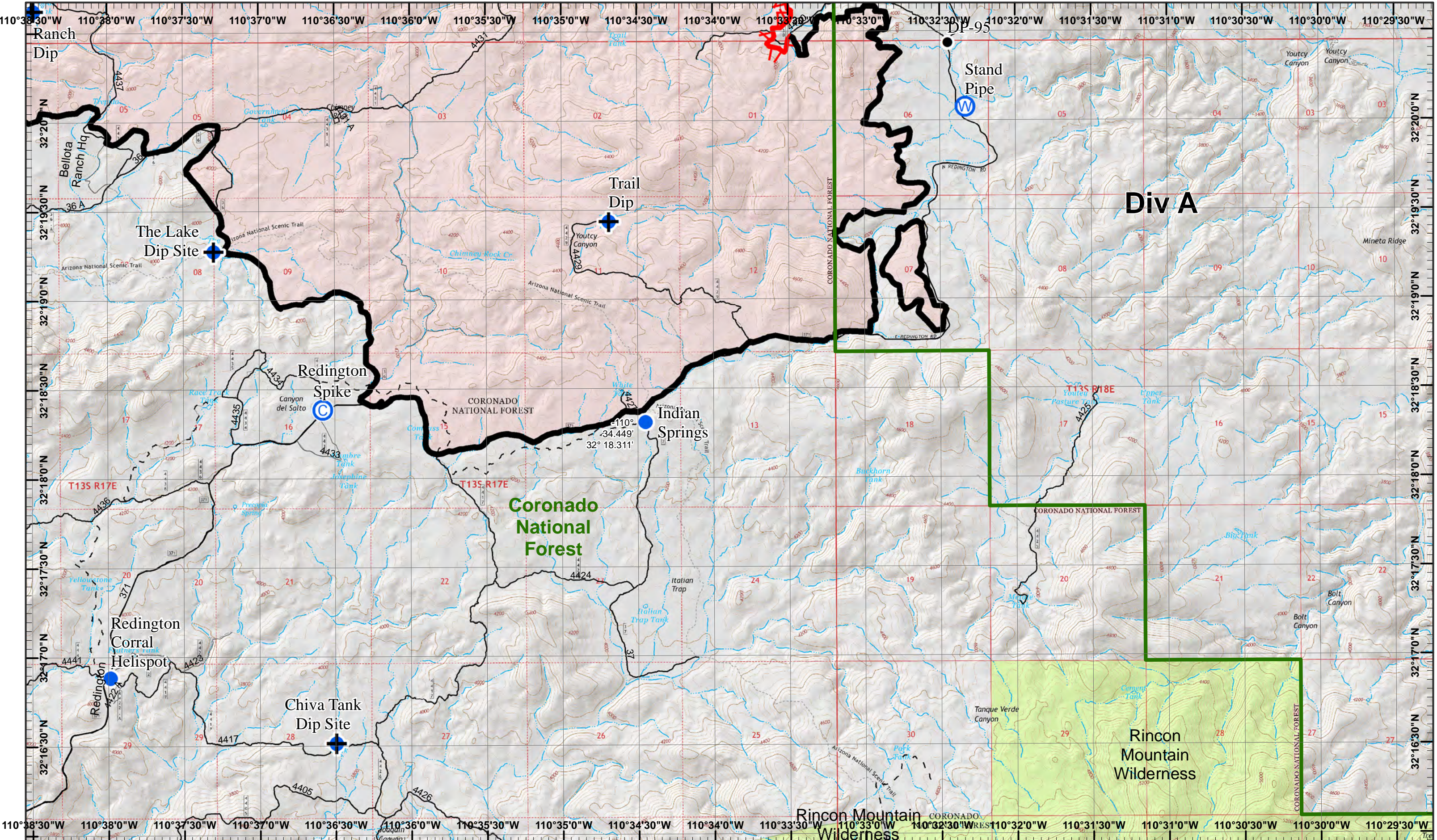
- North
- Dip Site
- Drop Point
- Incident Command Post
- Completed Line
- Helispot
- Completed Hand Line
- Completed Dozer Line



1	2
3	4
5	6

Page 5
)(Division
 || Branch



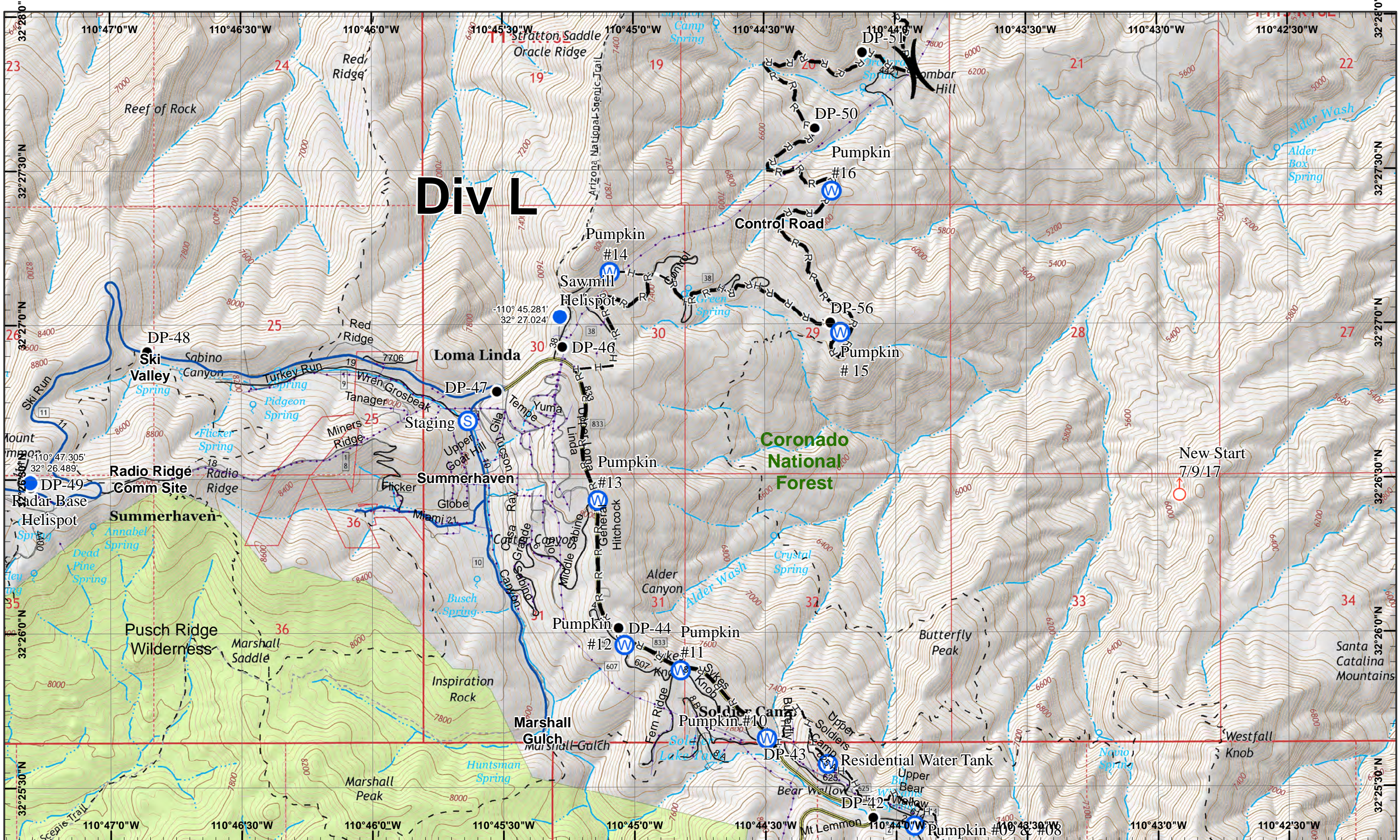


-  North
-  Dip Site
-  Camp
-  Drop Point
-  Water Source
-  Uncontrolled Fire Edge
-  Helispot
-  Completed Line

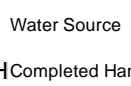
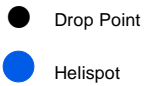


1	2
3	4
5	6



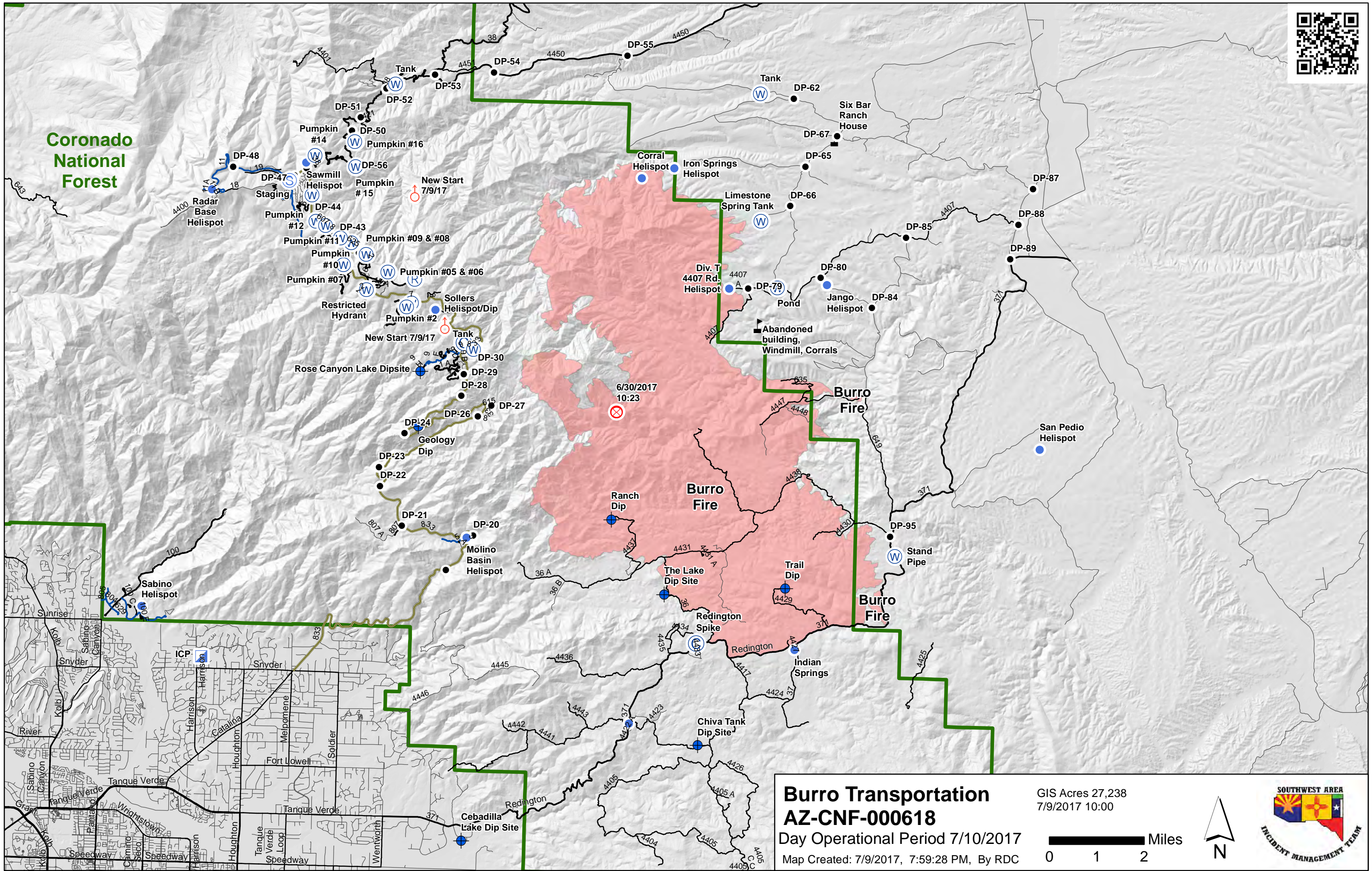


Div L





Coronado National Forest



Burro Transportation
AZ-CNF-000618
Day Operational Period 7/10/2017
Map Created: 7/9/2017, 7:59:28 PM, By RDC

GIS Acres 27,238
7/9/2017 10:00

