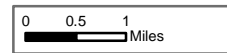


Burro Incident Index Map

GIS Acres 27,238
7/9/2017 10:00



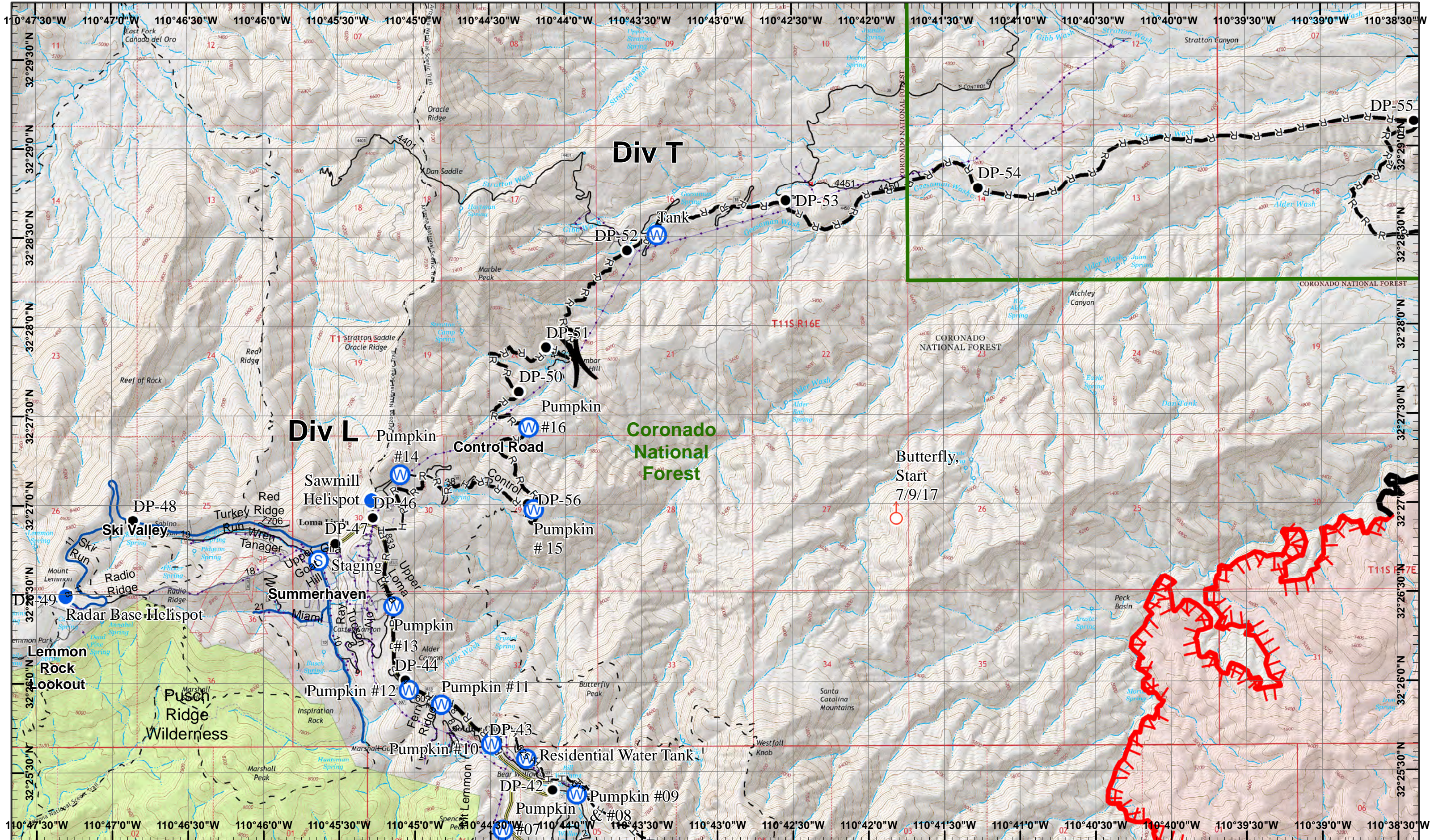
- | | | | | |
|-----------------------|-------------|------------------------|---------------------|------------------------|
| Dip Site | Fire Origin | Repeater | Water Source | Completed Dozer Line |
| Camp | Helispot | Spot Fire | Completed Hand Line | Planned Fire Line |
| Incident Command Post | Drop Point | Staging Area | Completed Line | Uncontrolled Fire Edge |
| | | Road as Completed Line | Fire Perimeter | |

Day Operational Period 7/11/2017

Map Created 7/10/2017 8:30:44 PM RDC

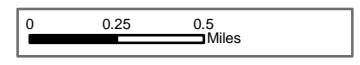
) Division
| Branch





Burro Incident
 Day Operational Period 7/11/2017

GIS Acres 27,238
 7/9/2017 10:00
 Map Created 7/10/2017 8:42:58 PM RDC



- Drop Point
- Helispot
- ⬆ Spot Fire
- Ⓢ Staging Area
- Ⓜ Water Source
- Completed Line
- R—R Road as Completed Line
- H—H Completed Hand Line
- ⚡ Uncontrolled Fire Edge
- Planned Fire Line

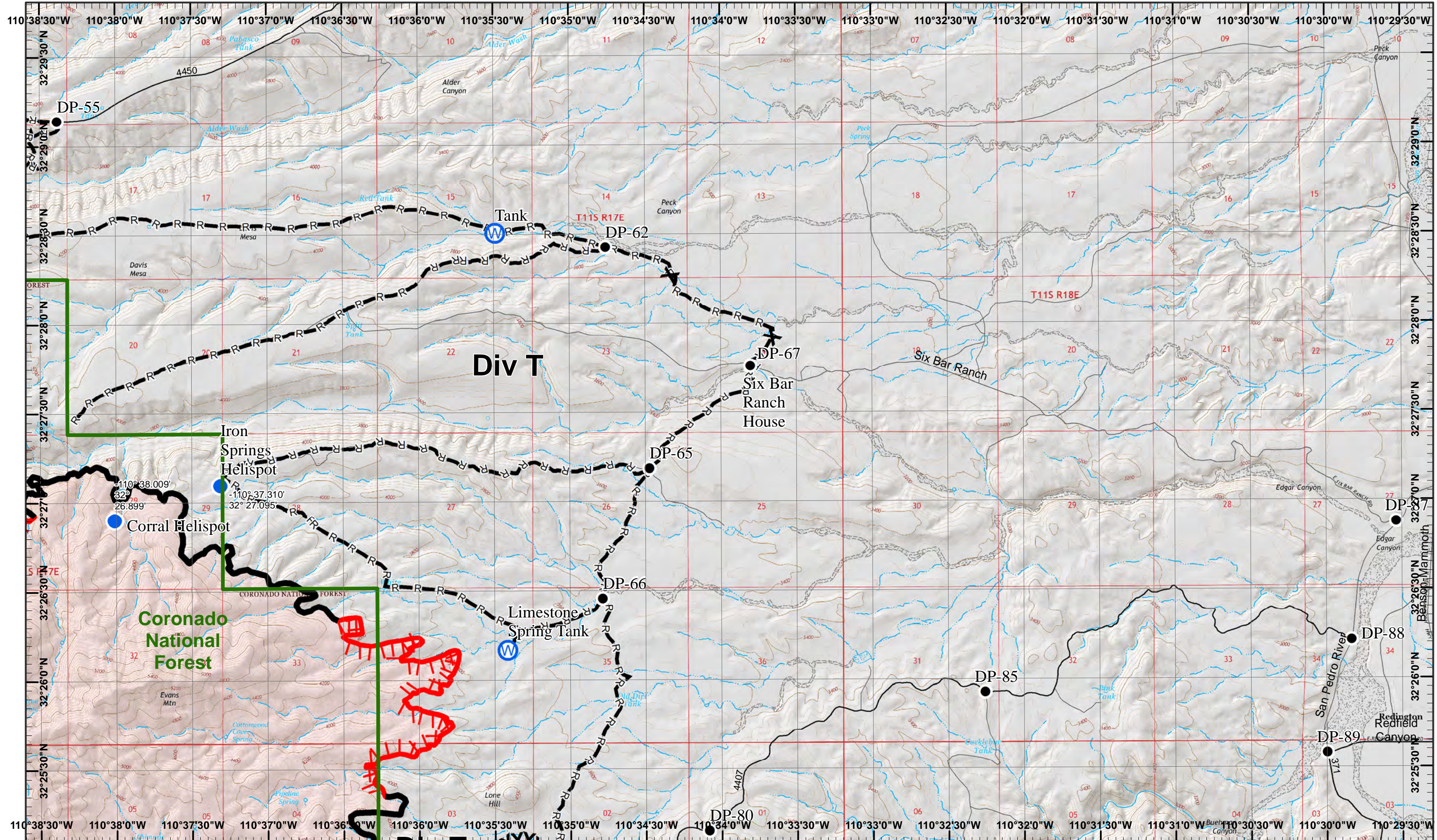
Neighboring Pages
 West Page NA North Page NA East Page 2
 South Page 3



| | |
|---|---|
| 1 | 2 |
| 3 | 4 |
| 5 | 6 |

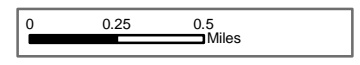
Page 1
)(Division
 || Branch





Burro Incident
 Day Operational Period 7/11/2017

GIS Acres 27,238
 7/9/2017 10:00
 Map Created 7/10/2017 8:43:16 PM RDC



- Drop Point
- Helispot
- Ⓜ Water Source
- R Road as Completed Line
>
- Completed Line
- XXX Completed Dozer Line
- ▬▬▬ Uncontrolled Fire Edge

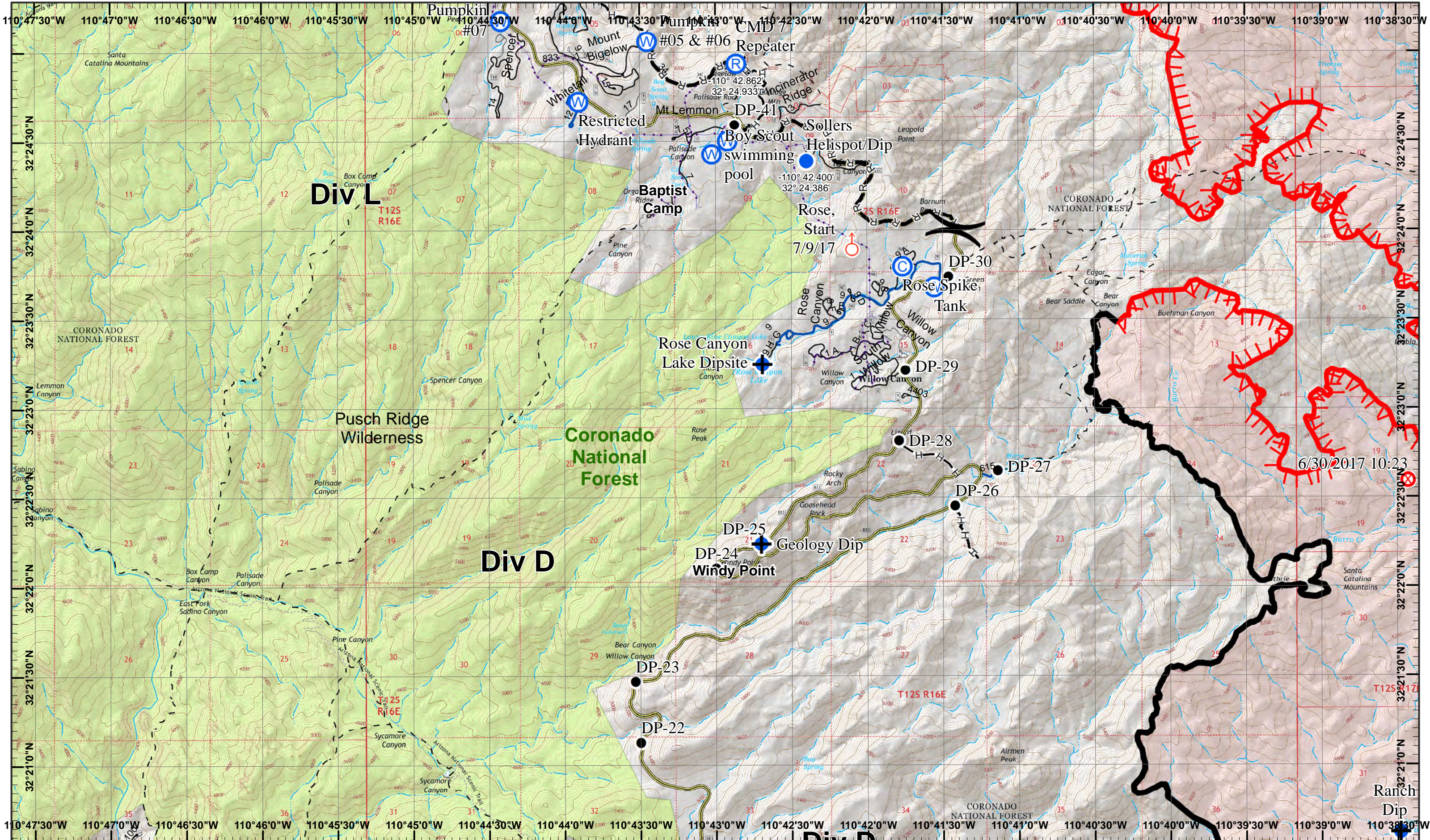
Neighboring Pages
 West Page 1 North Page NA East Page NA
 South Page 4



| | |
|---|---|
| 1 | 2 |
| 3 | 4 |
| 5 | 6 |

Page 2
)(Division
 || Branch



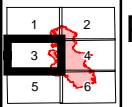


Burro Incident
 Day Operational Period 7/11/2017

GIS Acres 27,238
 7/9/2017 10:00
 0 0.25 0.5 Miles
 Map Created 7/10/2017 8:43:28 PM RDC

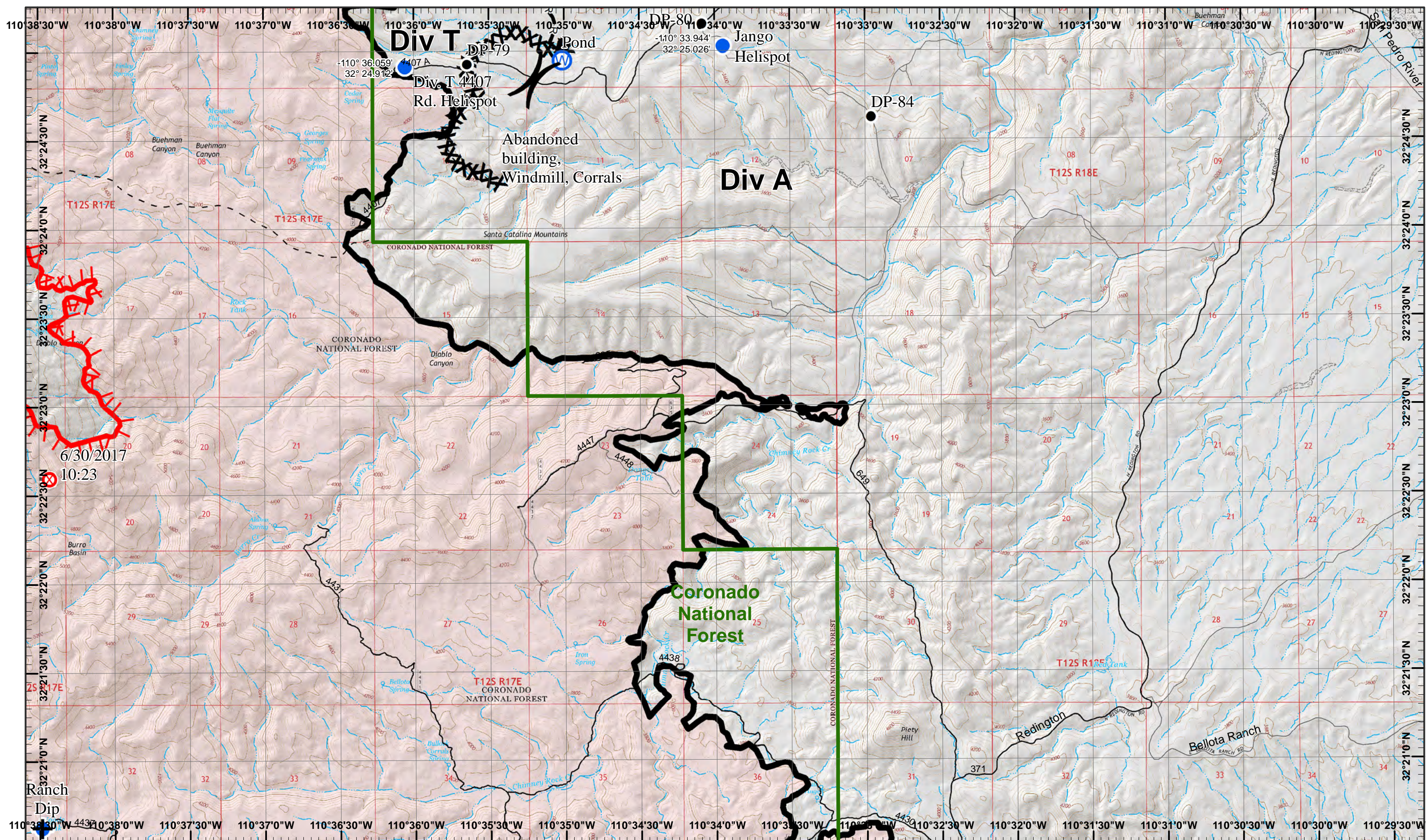
| | | | | | | | | | | |
|--|----------|------|-------------|----------|----------|-----------|---------------------|----------------|--------------------------|------------------------|
| | | | | | | | | | | |
| | Dip Site | Camp | Drop Point | Helispot | Repeater | Spot Fire | Water Source | Completed Line | R Road as Completed Line | Uncontrolled Fire Edge |
| | | | | | | | | | | |
| | | | Fire Origin | | | | | | | |
| | | | | | | | | | | |
| | | | | | | | Completed Hand Line | | | |

Neighboring Pages
 West Page NA North Page 1 East Page 4
 South Page 5



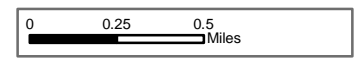
Page 3
)(Division
 || Branch





Burro Incident
 Day Operational Period 7/11/2017

GIS Acres 27,238
 7/9/2017 10:00
 Map Created 7/10/2017 8:43:42 PM RDC



- North Arrow
- Dip Site
- Drop Point
- Helispot
- Water Source
- Road as Completed Line
- Uncontrolled Fire Edge
- Fire Origin
- Completed Line
- Completed Dozer Line

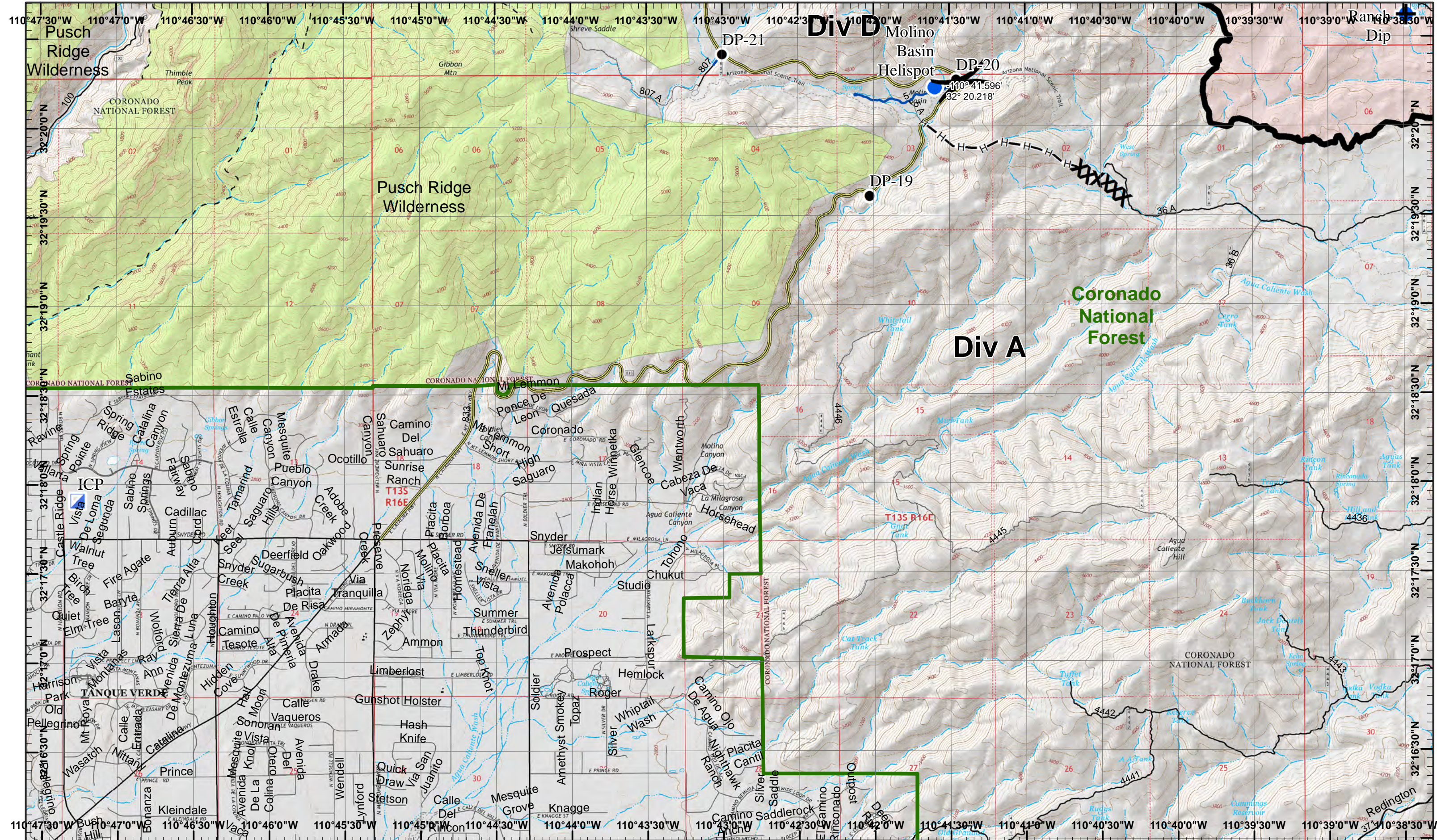
Neighboring Pages
 West Page 3 North Page 2 East Page NA
 South Page 6



| | |
|---|---|
| 1 | 2 |
| 3 | 4 |
| 5 | 6 |

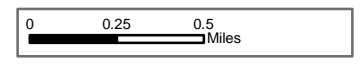
Page 4
)(Division
)(Branch





Burro Incident
 Day Operational Period 7/11/2017

GIS Acres 27,238
 7/9/2017 10:00
 Map Created 7/10/2017 8:43:54 PM RDC



- Dip Site
- Drop Point
- Helispot
- Incident Command Post
- Completed Line
- Completed Hand Line
- Completed Dozer Line

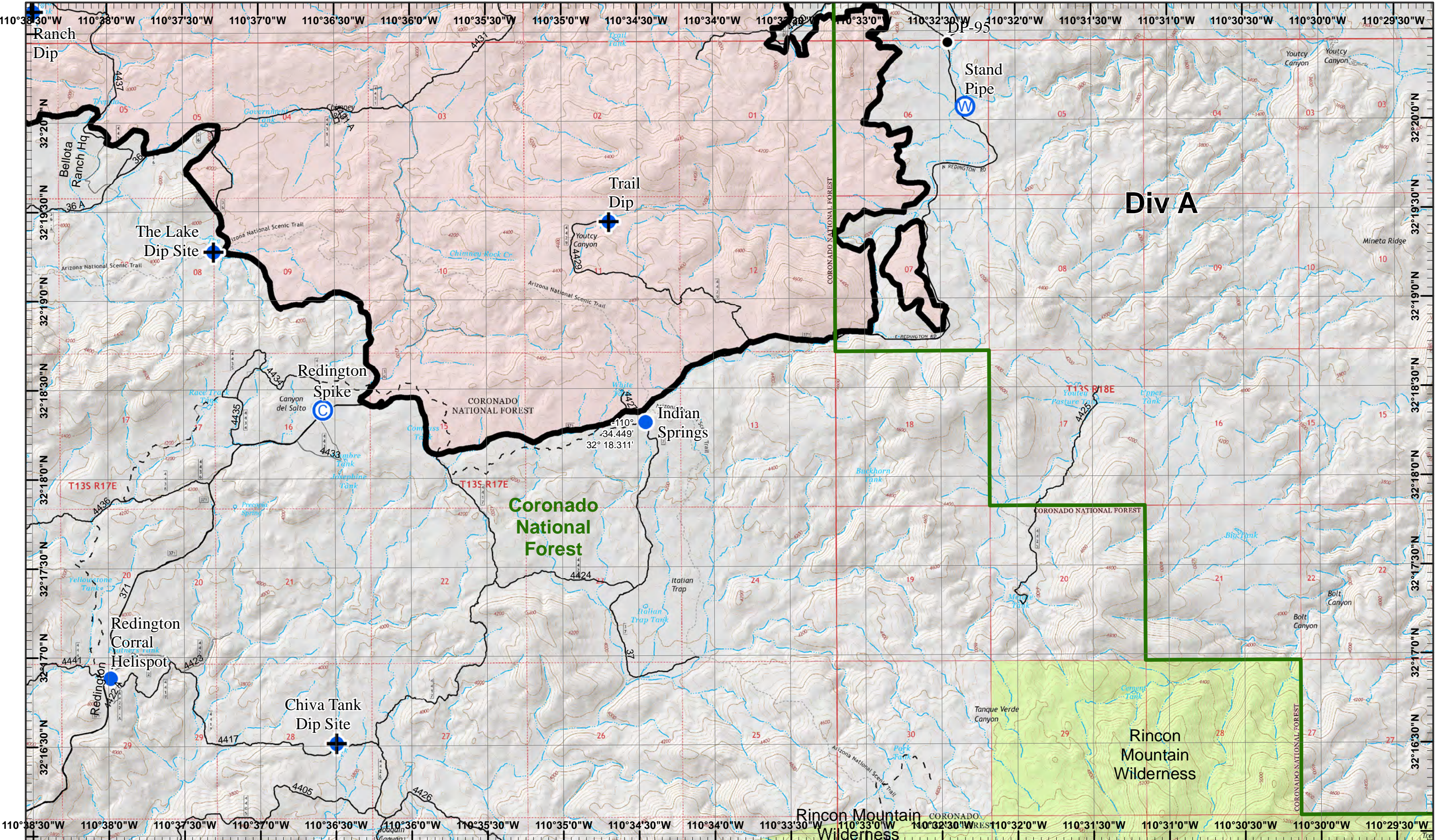
Neighboring Pages
 West Page NA North Page 3 East Page 6
 South Page NA



| | |
|---|---|
| 1 | 2 |
| 3 | 4 |
| 5 | 6 |

Page 5
)(Division
 || Branch



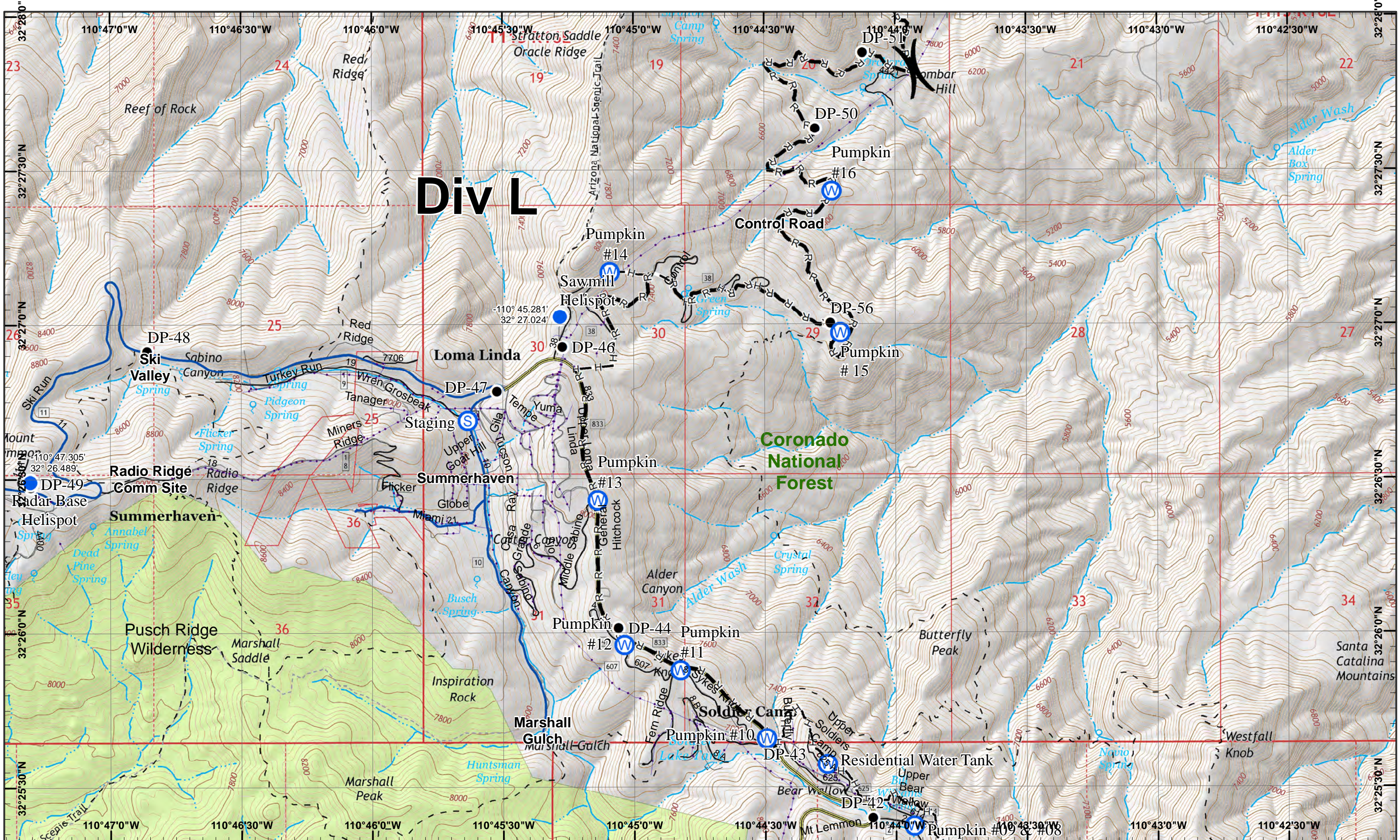


Div A

Coronado National Forest

Rincon Mountain Wilderness

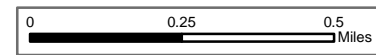




Div L

Burro Incident
 Day Operational Period 7/11/2017

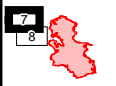
GIS Acres 27,238
 7/9/2017 10:00

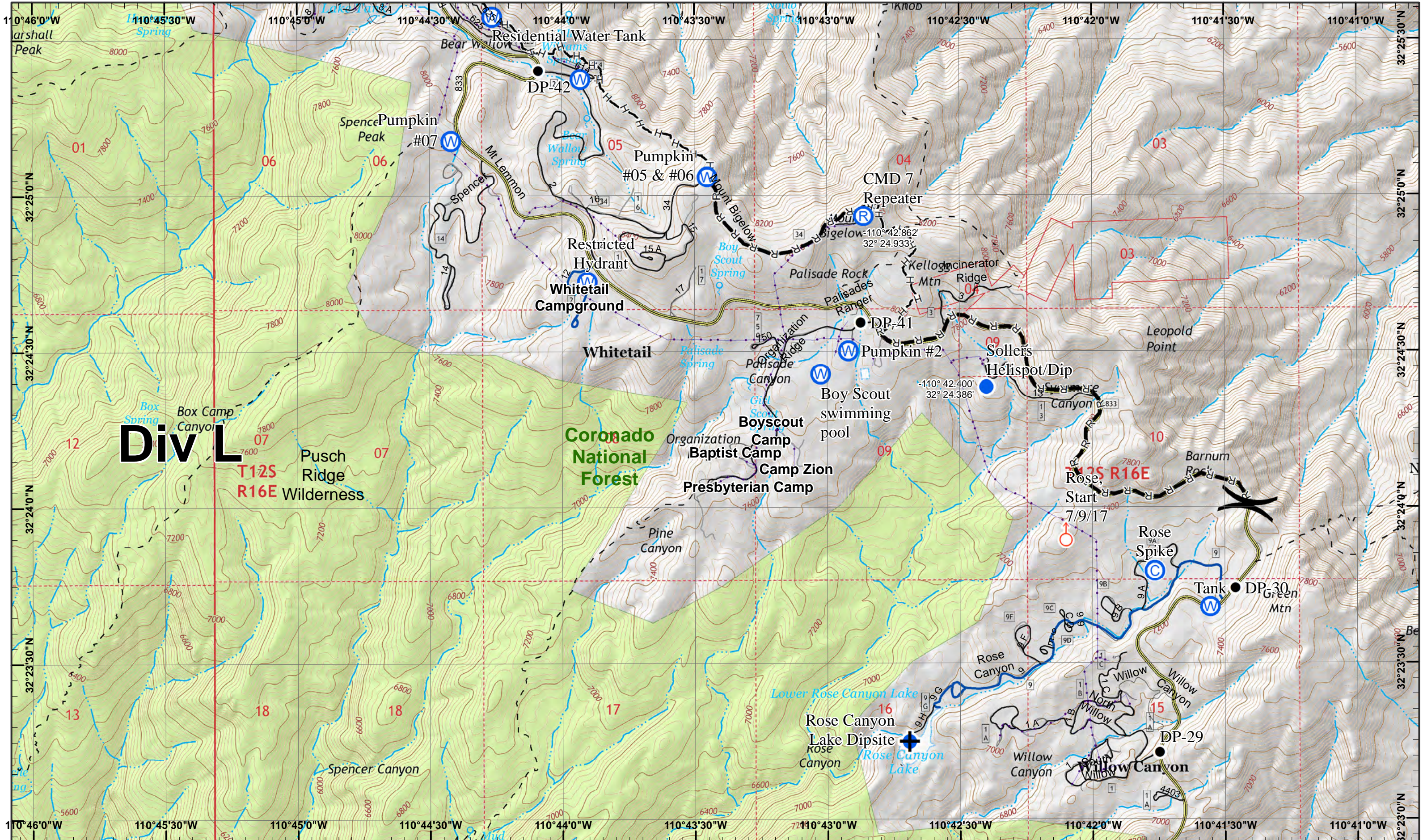


Map Created 7/10/2017 8:46:00 PM RDC



- Drop Point
- Staging Area
- Water Source
- R Road as Completed Line
- Helispot
- H Completed Hand Line





Div L

T12S
R16E

Pusch
Ridge
Wilderness

Coronado
National
Forest



R—R Road as Completed Line

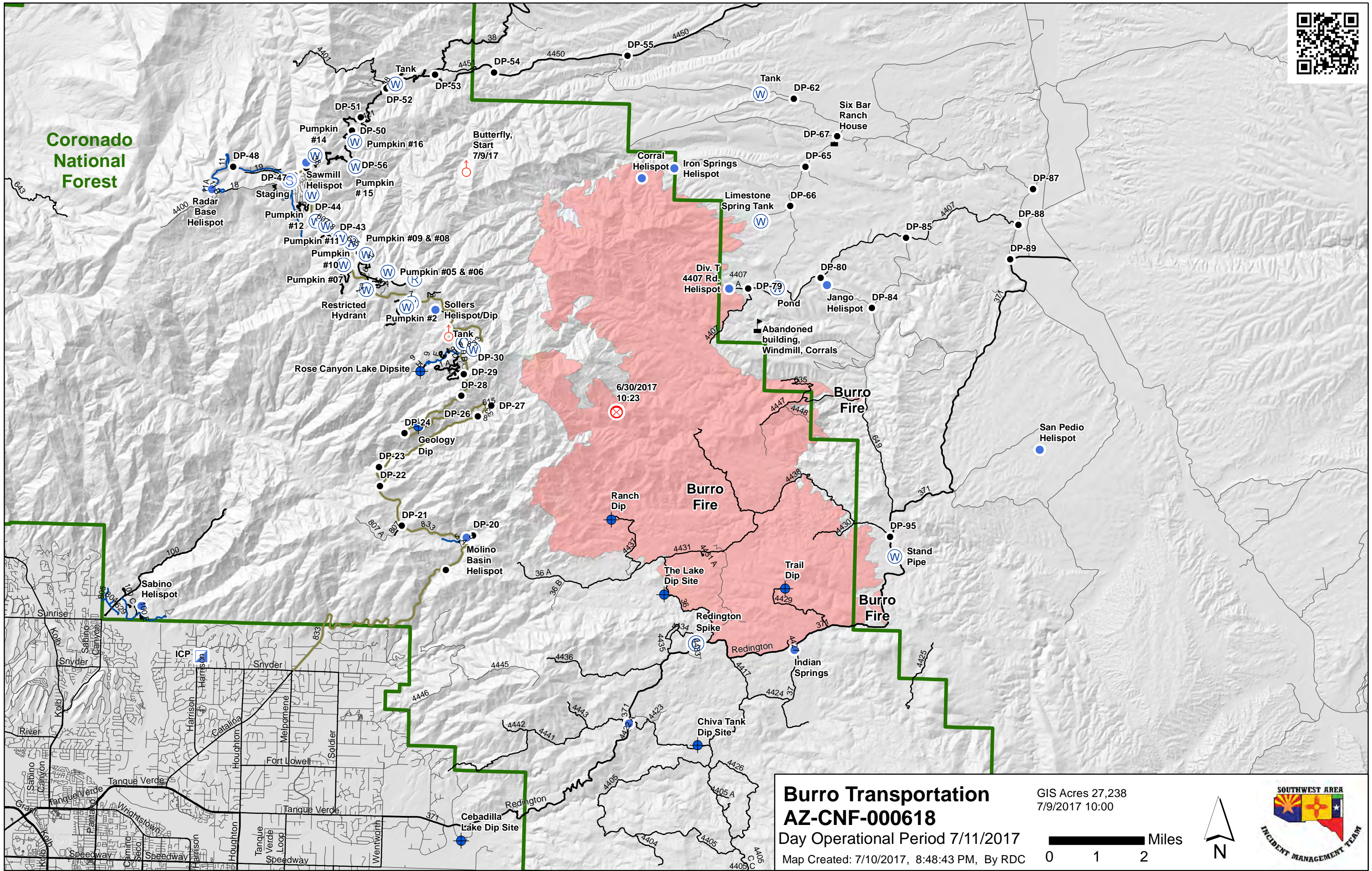


H—H Completed Hand Line





Coronado National Forest



Burro Transportation
AZ-CNF-000618
Day Operational Period 7/11/2017
Map Created: 7/10/2017, 8:48:43 PM, By RDC

GIS Acres 27,238
7/9/2017 10:00
0 1 2 Miles

