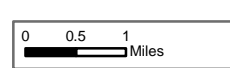


Burro Incident Index Map

GIS Acres 27,238
7/9/2017 10:00



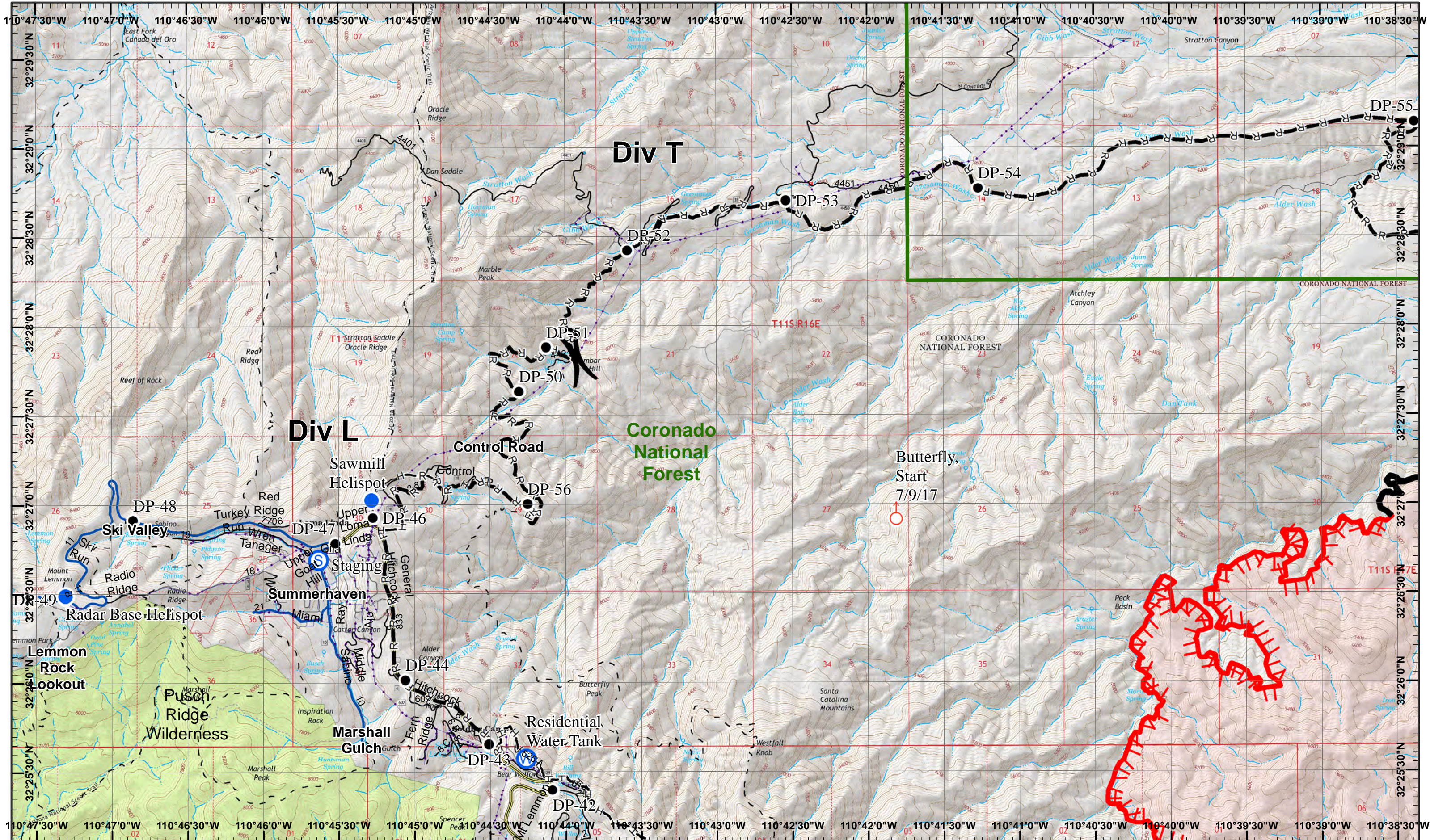
- | | | | | |
|------------|-----------------------|--------------|------------------------|------------------------|
| Dip Site | Fire Origin | Repeater | Water Source | Completed Dozer Line |
| Camp | Helispot | Spot Fire | Completed Hand Line | Planned Fire Line |
| Drop Point | Incident Command Post | Staging Area | Completed Line | Uncontrolled Fire Edge |
| | | | Road as Completed Line | Fire Perimeter |

Day Operational Period 7/12/2017

Map Created 7/11/2017 7:26:54 PM RDC

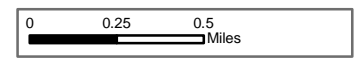


) Division
] Branch



Burro Incident
 Day Operational Period 7/12/2017

GIS Acres 27,238
 7/9/2017 10:00
 Map Created 7/11/2017 7:28:42 PM RDC



- Drop Point
- Helispot
- 📍 Spot Fire
- 📍 Staging Area
- 📍 Water Source
- Completed Line
- R—R Road as Completed Line
- H—H Completed Hand Line
- 🔴 Uncontrolled Fire Edge
- 🔴 Planned Fire Line

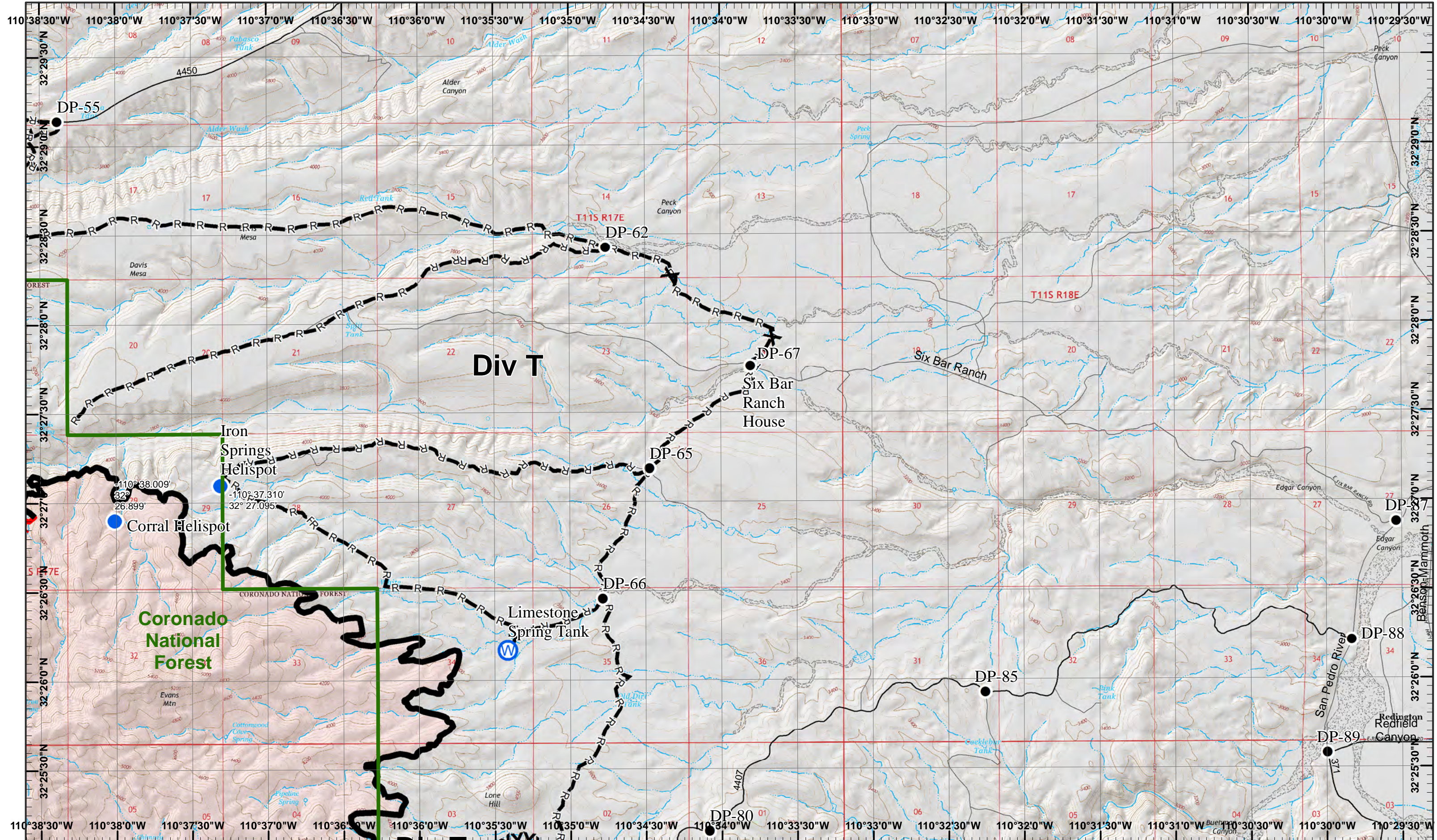
Neighboring Pages
 West Page NA North Page NA East Page 2
 South Page 3



1	2
3	4
5	6

Page 1
)(Division
 || Branch

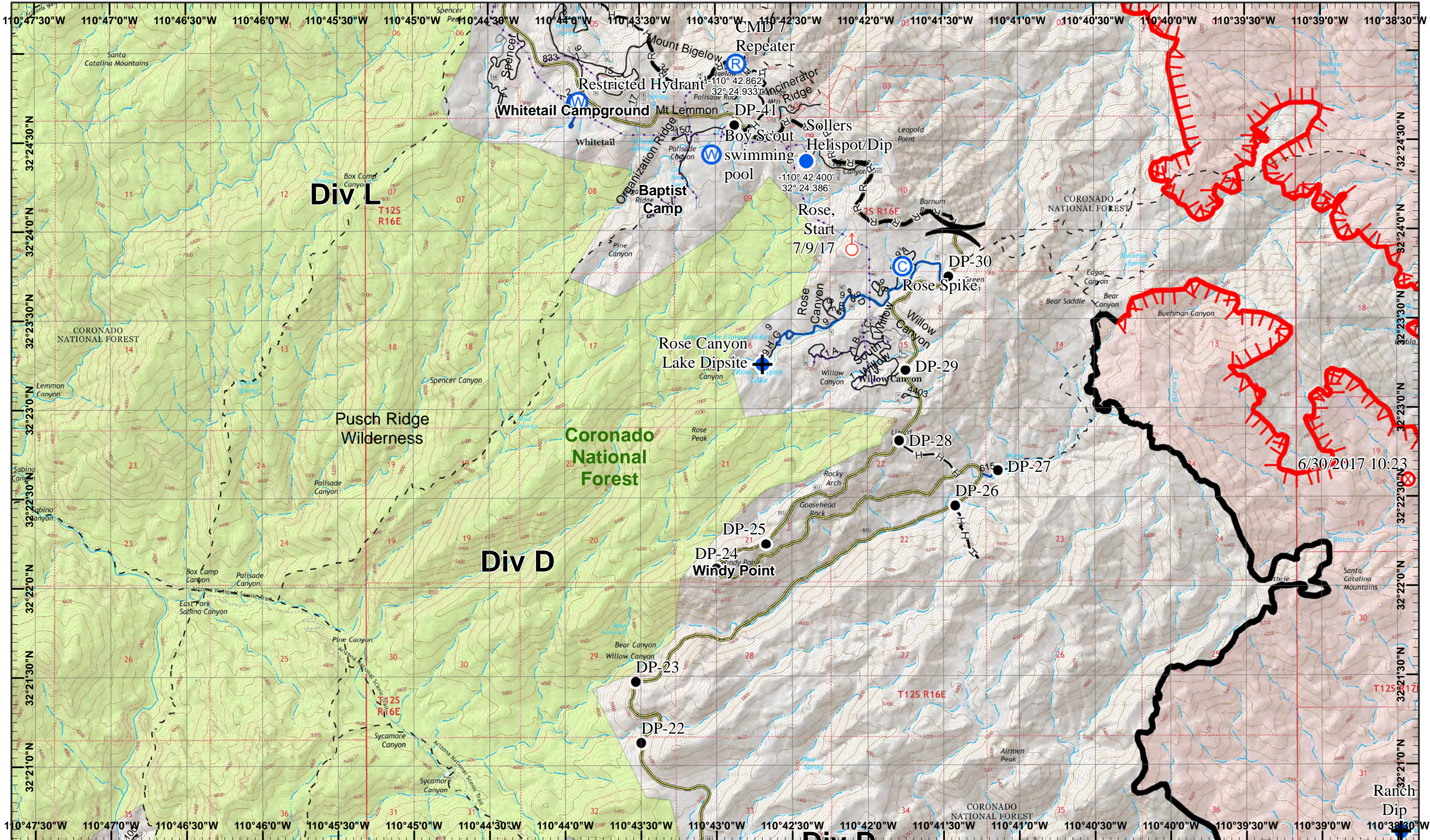




Div T

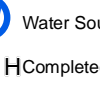
Coronado National Forest



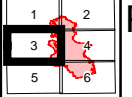


Burro Incident
 Day Operational Period 7/12/2017

GIS Acres 27,238
 7/9/2017 10:00
 Map Created 7/11/2017 7:29:07 PM RDC

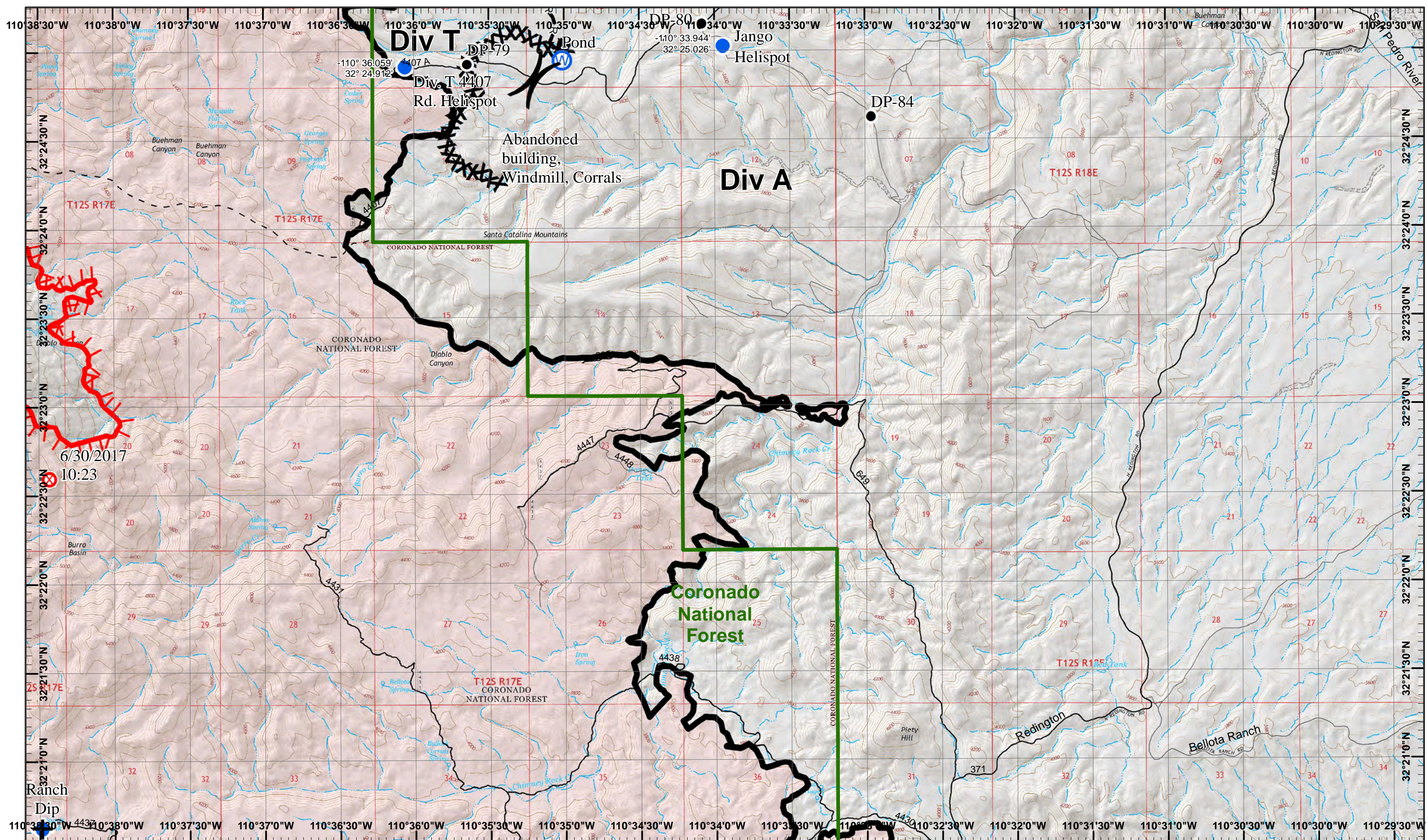


Neighboring Pages
 West Page NA North Page 1 East Page 4
 South Page 5



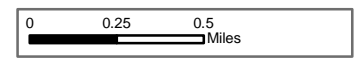
Page 3
)(Division
 || Branch





Burro Incident
 Day Operational Period 7/12/2017

GIS Acres 27,238
 7/9/2017 10:00
 Map Created 7/11/2017 7:29:16 PM RDC



- North
- Dip Site
- Drop Point
- Helispot
- Water Source
- R Road as Completed Line
- Uncontrolled Fire Edge
- Fire Origin
- Completed Line
- XXX Completed Dozer Line

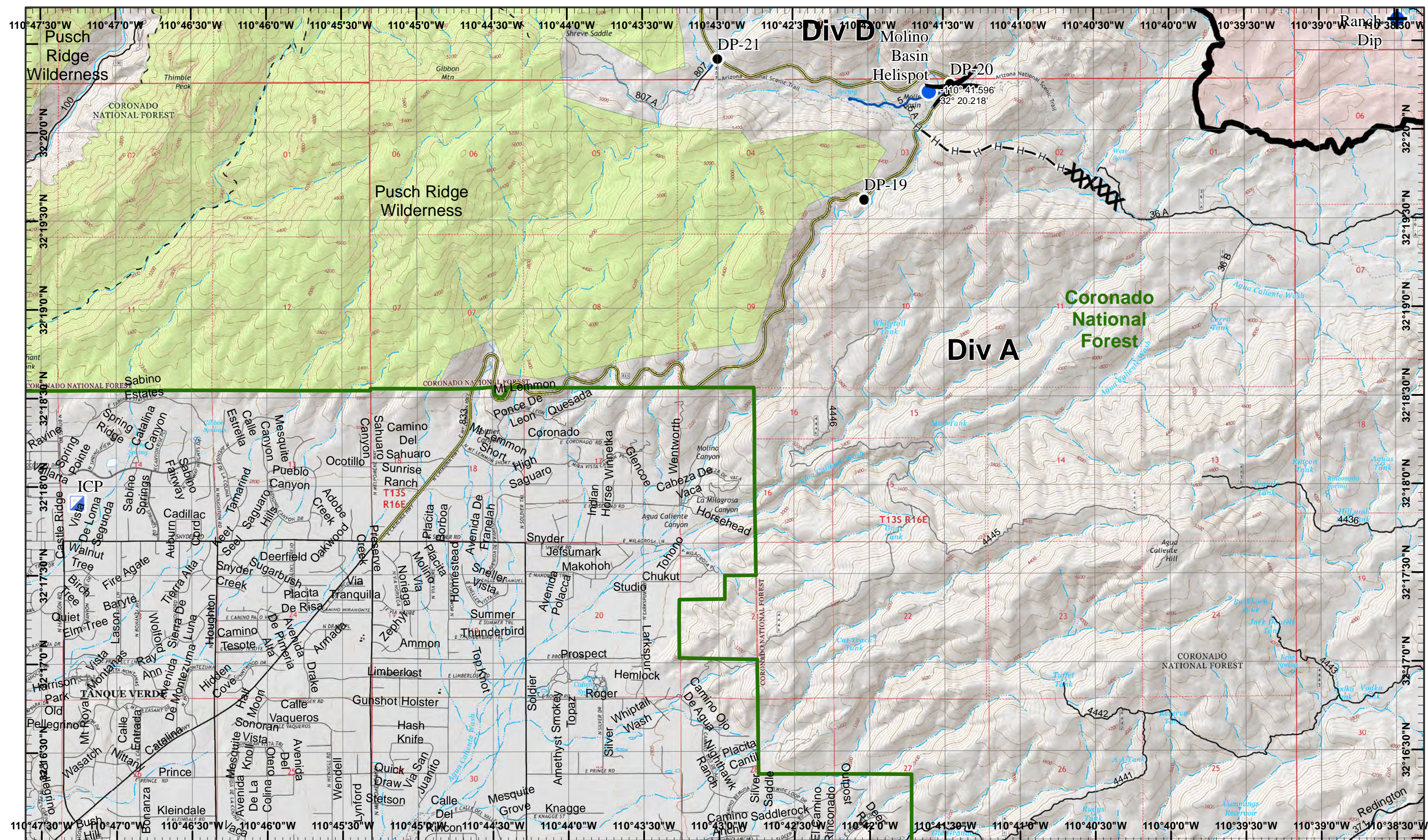
Neighboring Pages
 West Page 3 North Page 2 East Page NA
 South Page 6



1	2
3	4
5	6

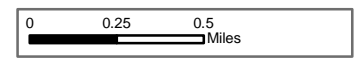
Page 4
)(Division
 || Branch





Burro Incident
 Day Operational Period 7/12/2017

GIS Acres 27,238
 7/9/2017 10:00
 Map Created 7/11/2017 7:29:26 PM RDC



- Dip Site
- Drop Point
- Helispot
- Incident Command Post
- Completed Line
- Completed Hand Line
- Completed Dozer Line

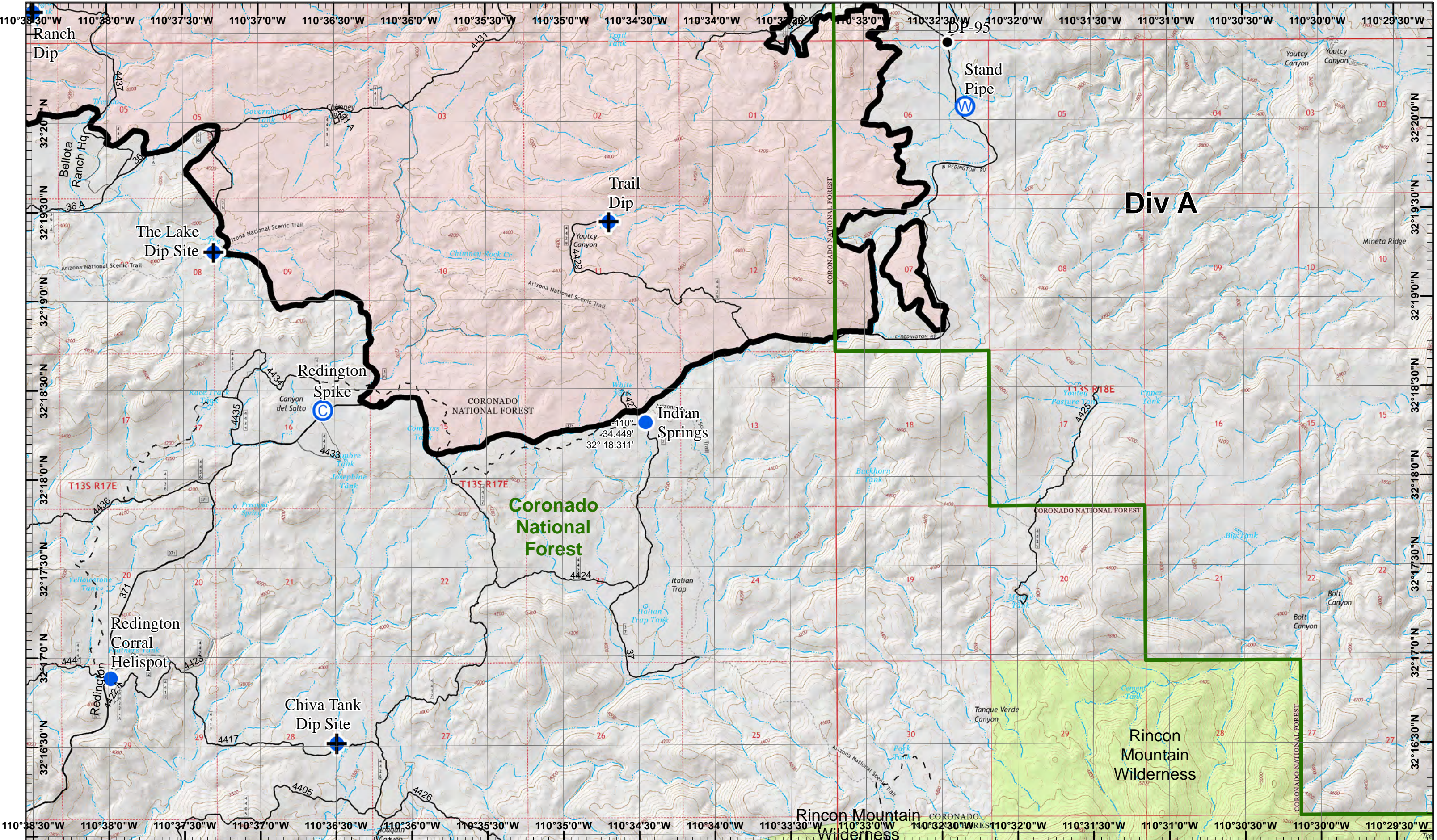
Neighboring Pages
 West Page NA North Page 3 East Page 6
 South Page NA

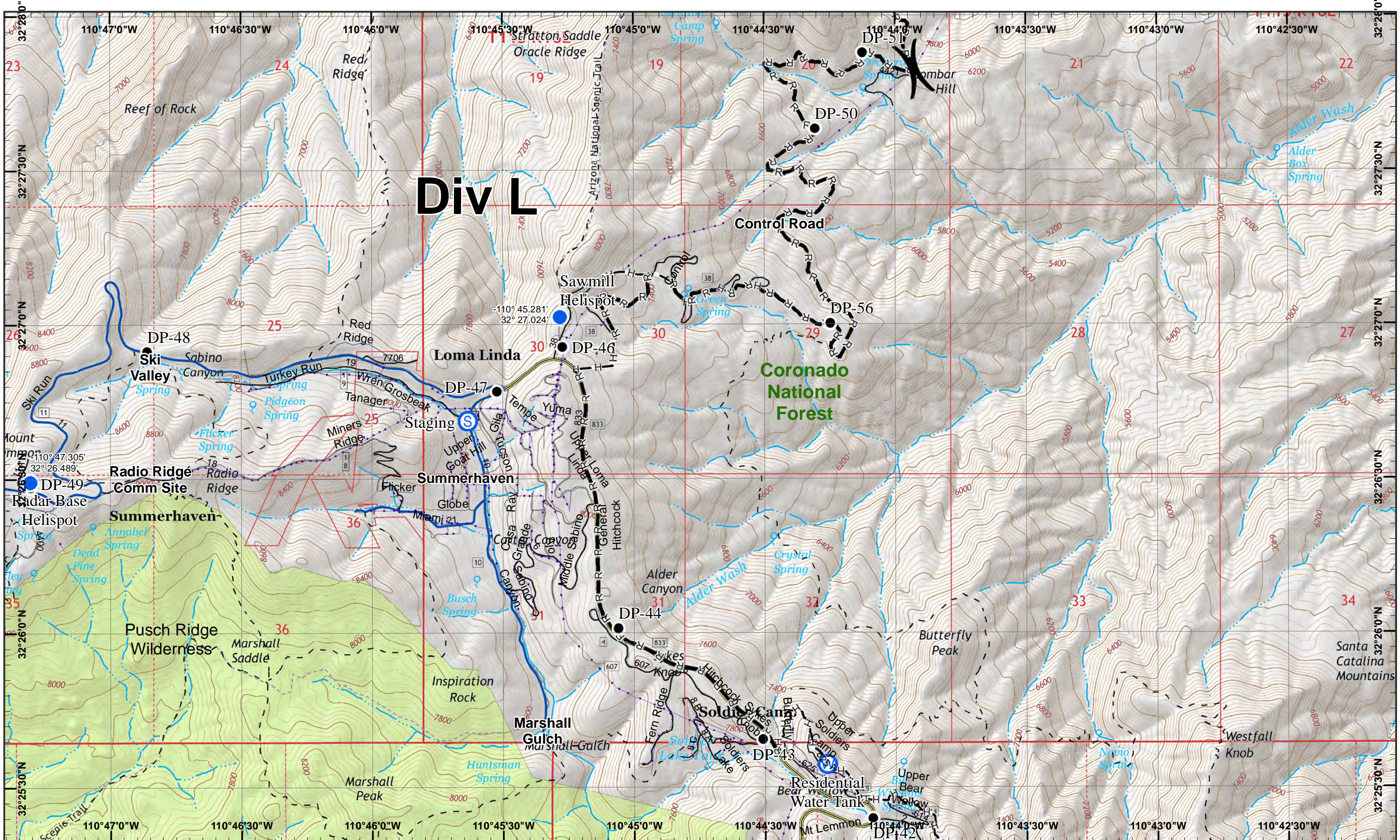


1	2
3	4
5	6

Page 5
)(Division
 || Branch



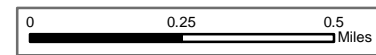




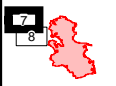
Div L

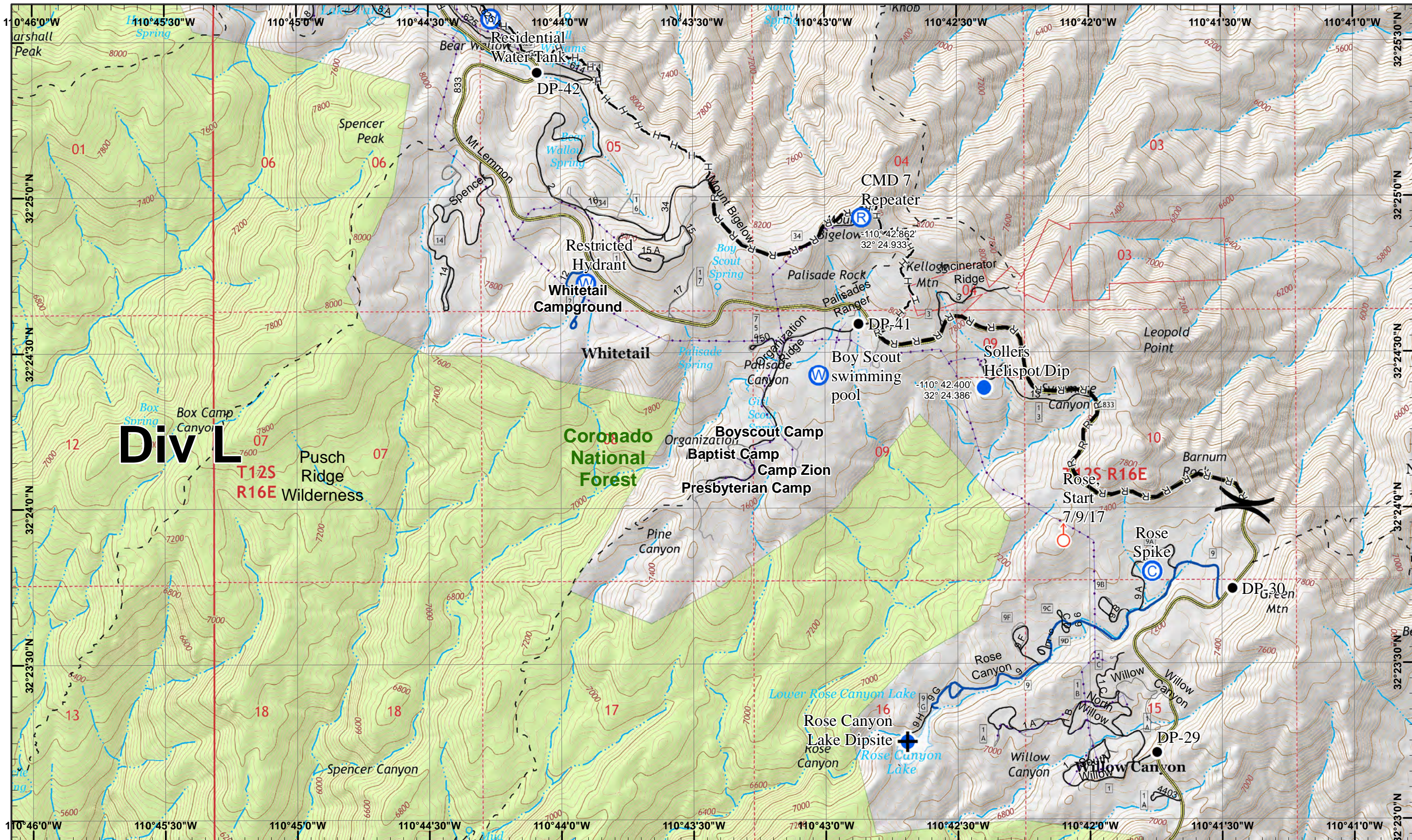
Burro Incident
 Day Operational Period 7/12/2017

GIS Acres 27,238
 7/9/2017 10:00
 Map Created 7/11/2017 7:33:24 PM RDC



- North
- Drop Point
- Staging Area
- Water Source
- Road as Completed Line
- Helispot
- Completed Hand Line





Div L

T12S
R16E

Pusch
Ridge
Wilderness

Coronado
National
Forest

T12S
R16E

Rose,
Start
7/9/17



R—R Road as Completed Line

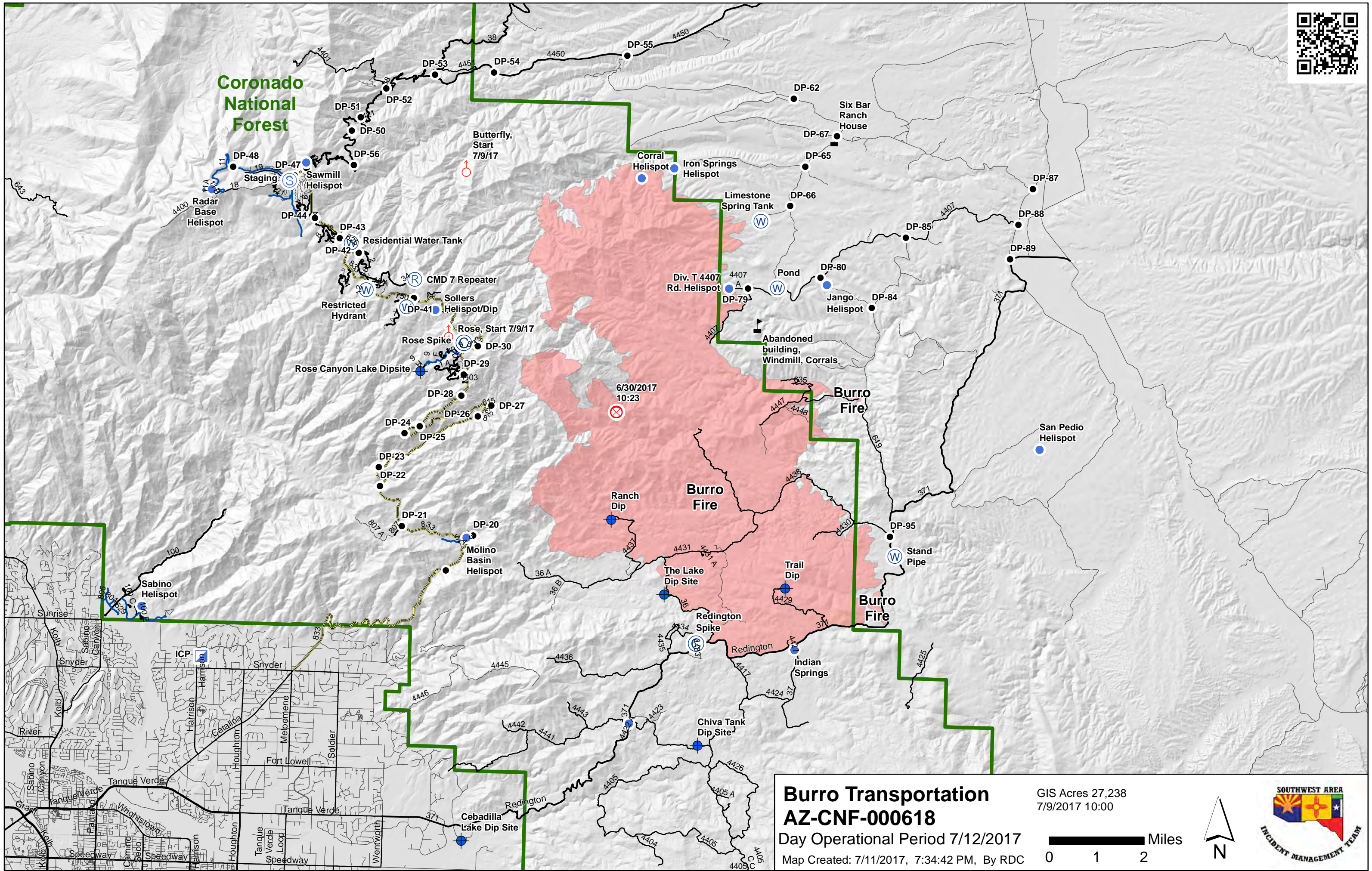


H—H Completed Hand Line





Coronado National Forest



Burro Transportation
AZ-CNF-000618
Day Operational Period 7/12/2017
Map Created: 7/11/2017, 7:34:42 PM, By RDC

GIS Acres 27,238
7/9/2017 10:00

