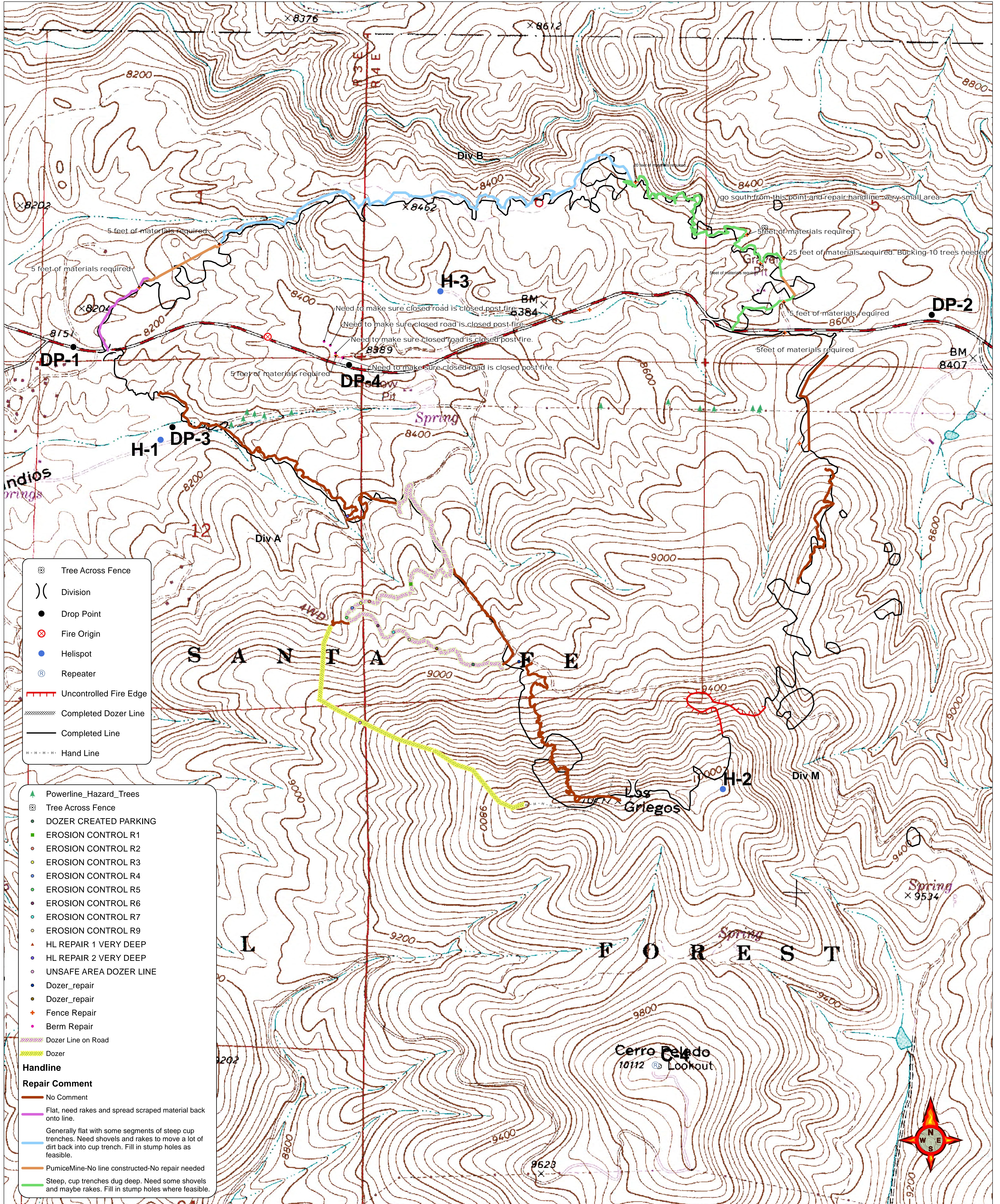


Suppression Repair



- ⊗ Tree Across Fence
-) (Division
- Drop Point
- ⊗ Fire Origin
- Helispot
- ⊕ Repeater
- Uncontrolled Fire Edge
- Completed Dozer Line
- Completed Line
- - - Hand Line

- ▲ Powerline_Hazard_Trees
 - ⊗ Tree Across Fence
 - DOZER CREATED PARKING
 - EROSION CONTROL R1
 - EROSION CONTROL R2
 - EROSION CONTROL R3
 - EROSION CONTROL R4
 - EROSION CONTROL R5
 - EROSION CONTROL R6
 - EROSION CONTROL R7
 - EROSION CONTROL R9
 - ▲ HL REPAIR 1 VERY DEEP
 - HL REPAIR 2 VERY DEEP
 - UNSAFE AREA DOZER LINE
 - Dozer_repair
 - Dozer_repair
 - Fence Repair
 - Berm Repair
 - Dozer Line on Road
 - Dozer
- Handline**
- Repair Comment**
- No Comment
 - Flat, need rakes and spread scraped material back onto line.
 - Generally flat with some segments of steep cup trenches. Need shovels and rakes to move a lot of dirt back into cup trench. Fill in stump holes as feasible.
 - PumiceMine-No line constructed-No repair needed
 - Steep, cup trenches dug deep. Need some shovels and maybe rakes. Fill in stump holes where feasible.

