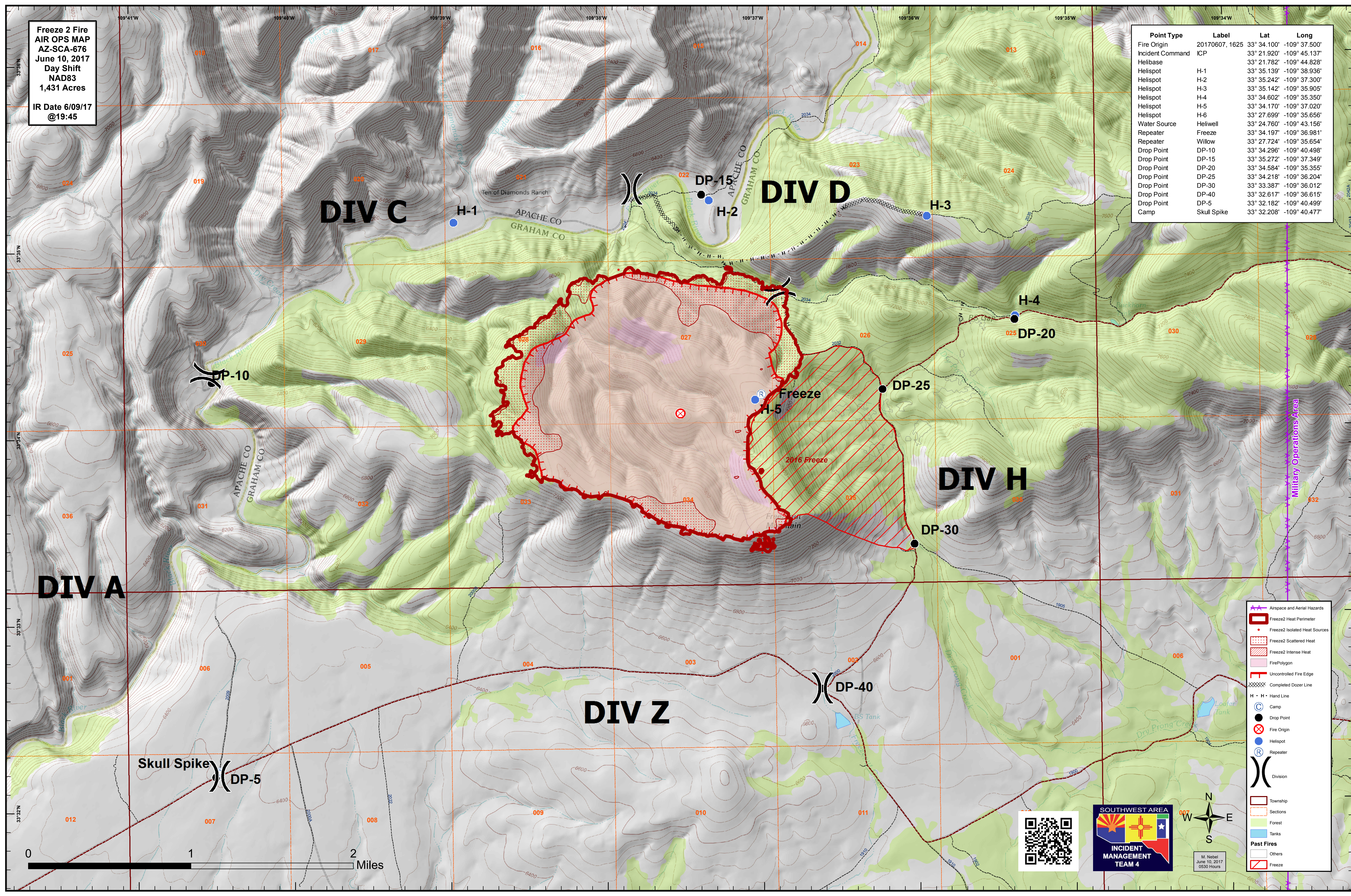


Freeze 2 Fire
 AIR OPS MAP
 AZ-SCA-676
 June 10, 2017
 Day Shift
 NAD83
 1,431 Acres
 IR Date 6/09/17
 @19:45

Point Type	Label	Lat	Long
Fire Origin	20170607, 1625	33° 34.100'	-109° 37.500'
Incident Command	ICP	33° 21.920'	-109° 45.137'
Helibase		33° 21.782'	-109° 44.828'
Helispot	H-1	33° 35.139'	-109° 38.936'
Helispot	H-2	33° 35.242'	-109° 37.300'
Helispot	H-3	33° 35.142'	-109° 35.905'
Helispot	H-4	33° 34.602'	-109° 35.350'
Helispot	H-5	33° 34.170'	-109° 37.020'
Helispot	H-6	33° 27.699'	-109° 35.656'
Water Source	Heliwell	33° 24.760'	-109° 43.156'
Repeater	Freeze	33° 34.197'	-109° 36.981'
Repeater	Willow	33° 27.724'	-109° 35.654'
Drop Point	DP-10	33° 34.296'	-109° 40.498'
Drop Point	DP-15	33° 35.272'	-109° 37.349'
Drop Point	DP-20	33° 34.584'	-109° 35.355'
Drop Point	DP-25	33° 34.218'	-109° 36.204'
Drop Point	DP-30	33° 33.387'	-109° 36.012'
Drop Point	DP-40	33° 32.617'	-109° 36.615'
Drop Point	DP-5	33° 32.182'	-109° 40.499'
Camp	Skull Spike	33° 32.208'	-109° 40.477'



Airspace and Aerial Hazards

- Freeze2 Heat Perimeter
- Freeze2 Isolated Heat Sources
- Freeze2 Scattered Heat
- Freeze2 Intense Heat
- Fire Polygon
- Uncontrolled Fire Edge
- Completed Dozer Line

Hand Lines

- H - H - Hand Line

Camp

- Camp

Drop Point

- Drop Point

Fire Origin

- Fire Origin

Helispot

- Helispot

Repeater

- Repeater

Division

- Division

Township

- Township

Sections

- Sections

Forest

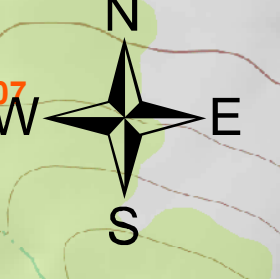
- Forest

Tanks

- Tanks

Past Fires

- Others
- Freeze



M. Nebel
 June 10, 2017
 0530 Hours