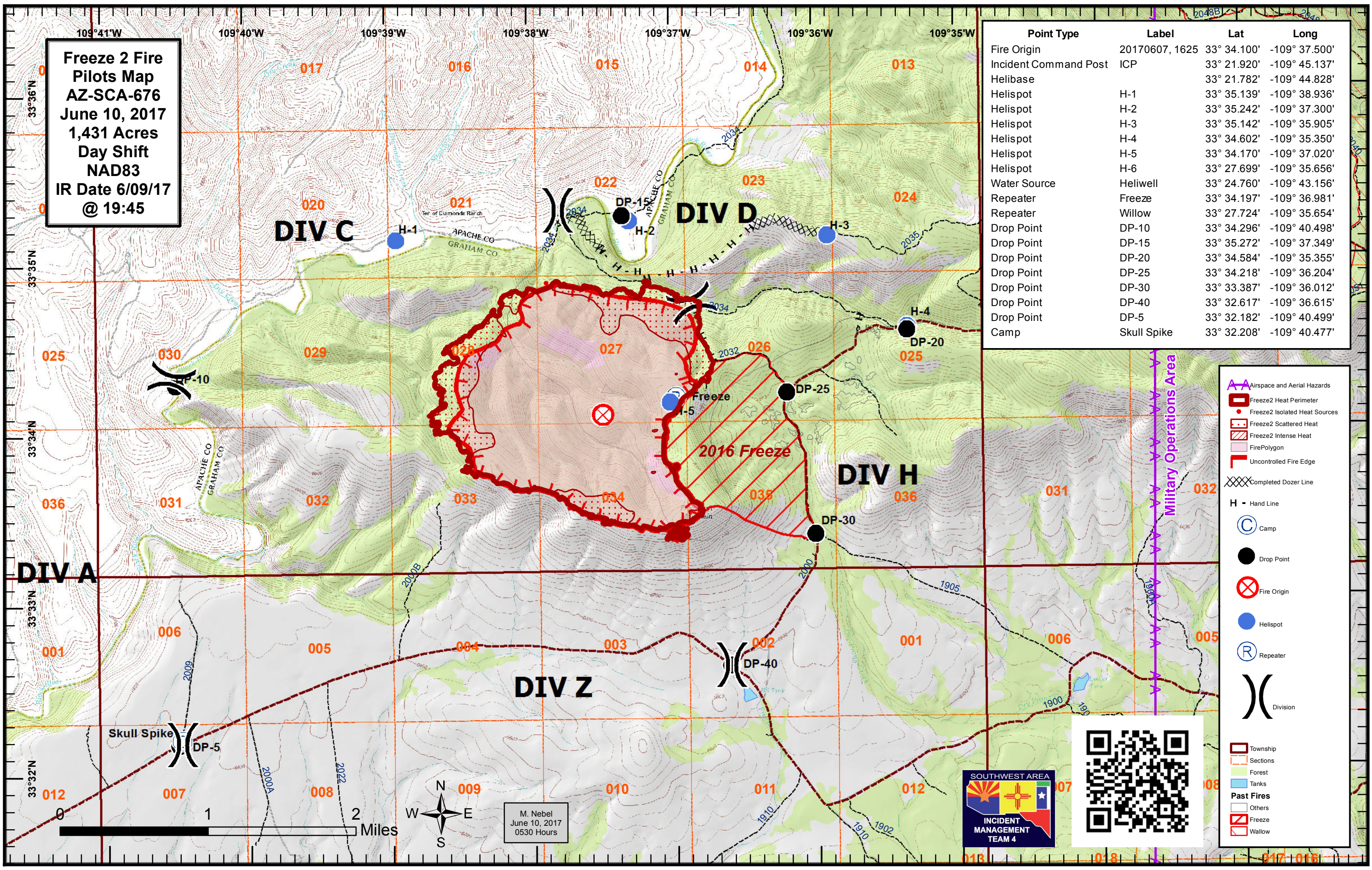


Freeze 2 Fire
Pilots Map
AZ-SCA-676
June 10, 2017
1,431 Acres
Day Shift
NAD83
IR Date 6/09/17
@ 19:45

Point Type	Label	Lat	Long
Fire Origin	20170607, 1625	33° 34.100'	-109° 37.500'
Incident Command Post	ICP	33° 21.920'	-109° 45.137'
Helibase		33° 21.782'	-109° 44.828'
Helispot	H-1	33° 35.139'	-109° 38.936'
Helispot	H-2	33° 35.242'	-109° 37.300'
Helispot	H-3	33° 35.142'	-109° 35.905'
Helispot	H-4	33° 34.602'	-109° 35.350'
Helispot	H-5	33° 34.170'	-109° 37.020'
Helispot	H-6	33° 27.699'	-109° 35.656'
Water Source	Heliwell	33° 24.760'	-109° 43.156'
Repeater	Freeze	33° 34.197'	-109° 36.981'
Repeater	Willow	33° 27.724'	-109° 35.654'
Drop Point	DP-10	33° 34.296'	-109° 40.498'
Drop Point	DP-15	33° 35.272'	-109° 37.349'
Drop Point	DP-20	33° 34.584'	-109° 35.355'
Drop Point	DP-25	33° 34.218'	-109° 36.204'
Drop Point	DP-30	33° 33.387'	-109° 36.012'
Drop Point	DP-40	33° 32.617'	-109° 36.615'
Drop Point	DP-5	33° 32.182'	-109° 40.499'
Camp	Skull Spike	33° 32.208'	-109° 40.477'



Legend

- Airspace and Aerial Hazards
- Freeze2 Heat Perimeter
- Freeze2 Isolated Heat Sources
- Freeze2 Scattered Heat
- Freeze2 Intense Heat
- Fire Polygon
- Uncontrolled Fire Edge
- Completed Dozer Line
- H - Hand Line
- Camp
- Drop Point
- Fire Origin
- Helispot
- Repeater
- Division
- Township
- Sections
- Forest
- Tanks
- Past Fires
- Others
- Freeze
- Wallow

M. Nebel
June 10, 2017
0530 Hours

