

Goodwin Fire
AZ-PNF- 000904
 ~4,400 Acres as of 0350 hrs, 6/27/17
 6/27/2017
 UTM 12N NAD 83

Index Tile Maps

- CONTINGENCY
- DIVISION A
- DIVISION C-L
- DIVISION Z
- STRUCTURE 1
- STRUCTURE 2

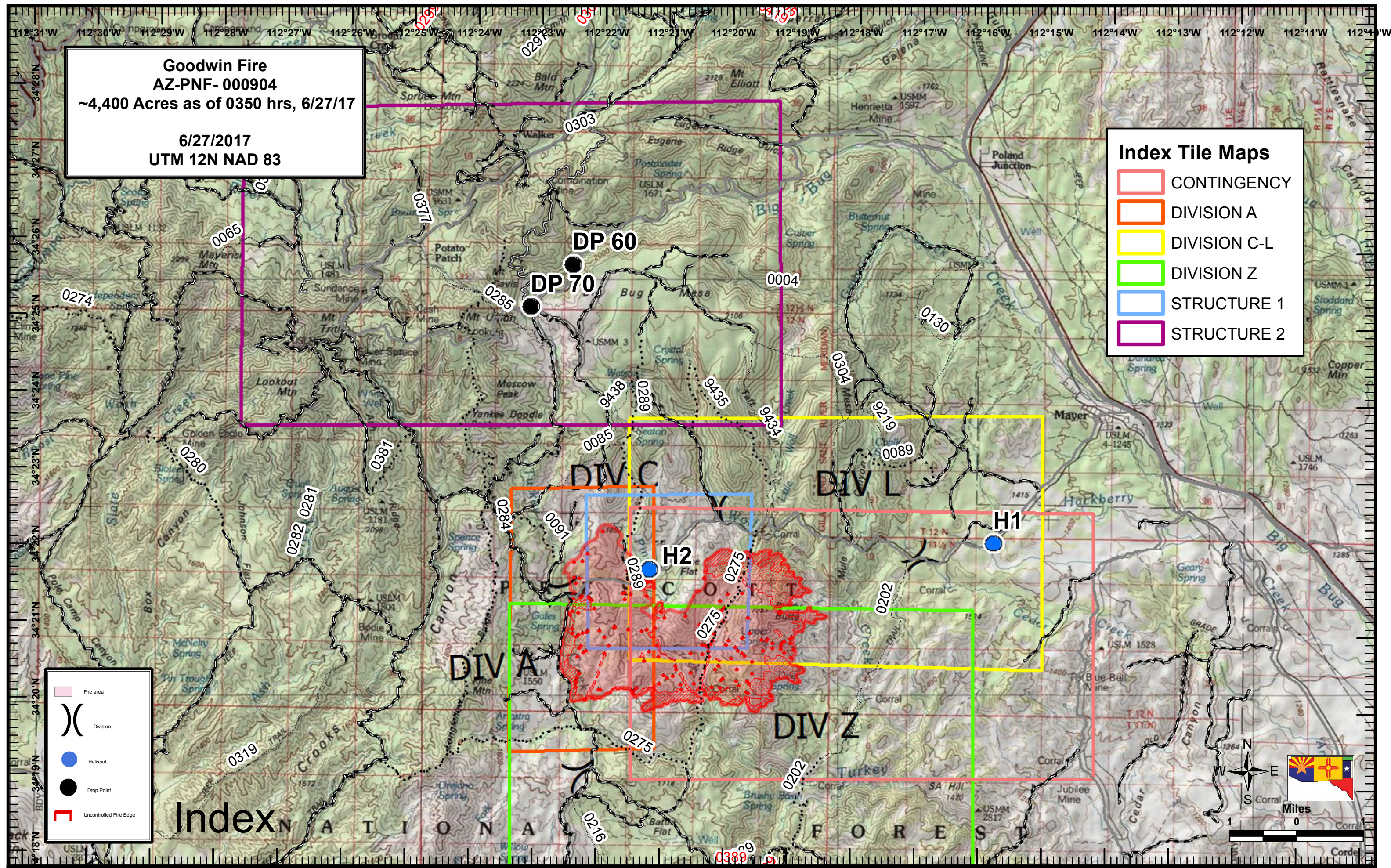
Legend

- Fire area
- () Division
- Helispot
- Drop Point
- Uncontrolled Fire Edge

Index

Map navigation and scale elements:

- Compass rose showing North (N), South (S), East (E), and West (W).
- Scale bar in miles, marked from 0 to 1.
- Inset map of Arizona showing the location of the study area in the southeastern part of the state.



Goodwin Fire
AZ-PNF- 000904
~4,400 Acres as of 0350 hrs, 6/27/17

6/27/2017
UTM 12N NAD 83

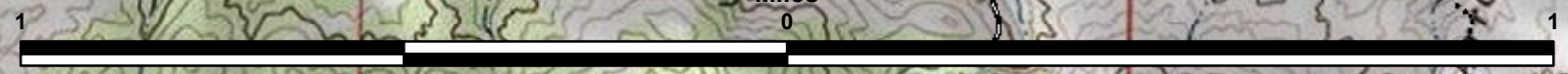
H2

Legend:

- Fire area
- Division
- Helispot
- Drop Point
- Uncontrolled Fire Edge

DIVISION A

DIVISION A



Goodwin Fire
AZ-PNF- 000904
~4,400 Acres as of 0350 hrs, 6/27/17

6/27/2017
UTM 12N NAD 83

DIV C

DIV L

DIVISION C-L

Legend:

- Fire area
- Division
- Helispot
- Drop Point
- Uncontrolled Fire Edge

H1

H2



Goodwin Fire
AZ-PNF- 000904
~4,400 Acres as of 0350 hrs, 6/27/17
6/27/2017
UTM 12N NAD 83

Legend:

- Fire area (Pink shaded area)
- Division (Black line with 'X' symbol)
- Hotspot (Blue circle)
- Drop Point (Black circle)
- Uncontrolled Fire Edge (Red dashed line)

DIVISION Z

DIV Z



Goodwin Fire
AZ-PNF- 000904
~4,400 Acres as of 0350 hrs, 6/27/17

6/27/2017
UTM 12N NAD 83

DIV C

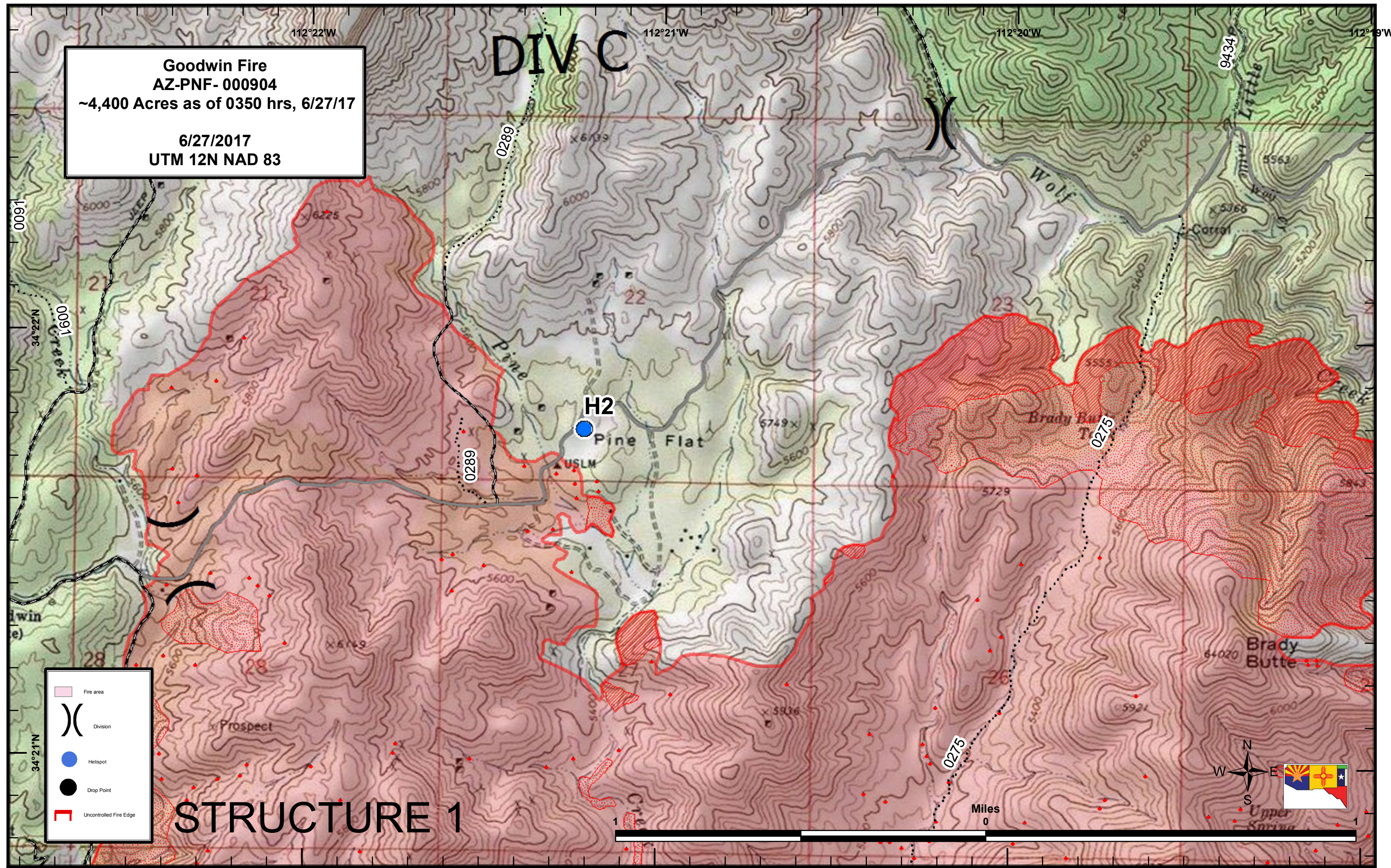
STRUCTURE 1

Legend:

- Fire area (Pink shaded area)
- Division (Black line with 'X' symbol)
- Helispot (Blue circle)
- Drop Point (Black circle)
- Uncontrolled Fire Edge (Red dashed line)



Miles
0



Goodwin Fire
AZ-PNF- 000904
~4,400 Acres as of 0350 hrs, 6/27/17

6/27/2017
UTM 12N NAD 83

Legend:

- Fire area (Pink shaded region)
- Division (Black line with 'X' symbol)
- Helispot (Blue circle)
- Drop Point (Black circle)
- Uncontrolled Fire Edge (Red line)

STRUCTURE 2

DP 60

DP 70

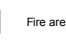




Miles 0 1

0303, 0307, 0377, 0285, 0284, 0289, 9438, 9435, 9434, 0304, 0004

Goodwin Fire
AZ-PNF- 000904
~4,400 Acres as of 0350 hrs, 6/27/17
6/27/2017
UTM 12N NAD 83

H2

H1

-  Fire area
-  Division
-  Helispot
-  Drop Point
-  Uncontrolled Fire Edge

CONTINGENCY

