

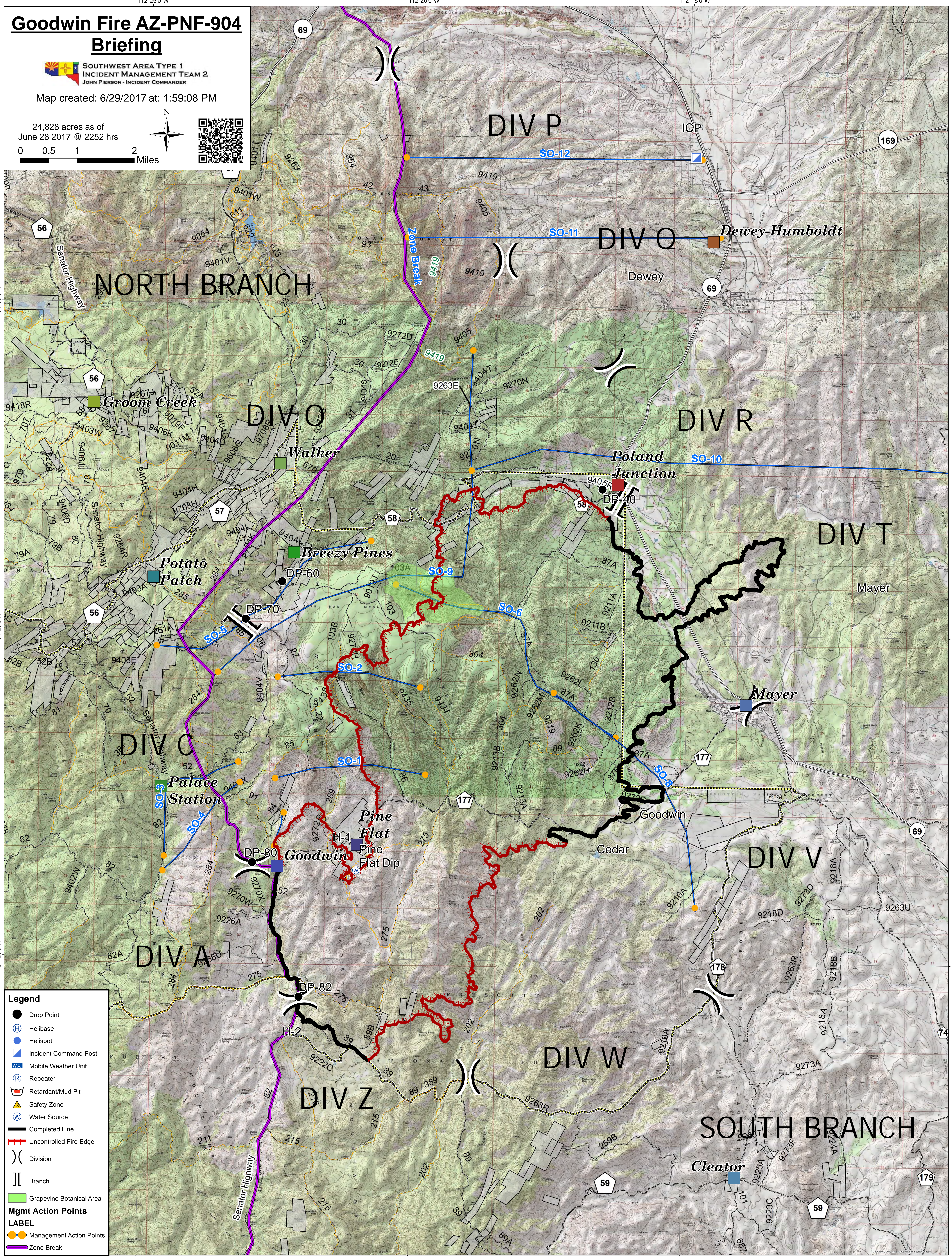
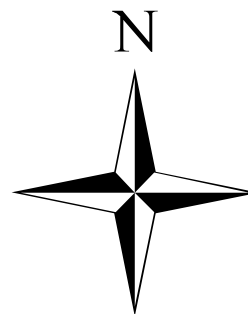
Goodwin Fire AZ-PNF-904

Briefing

**SOUTHWEST AREA TYPE 1
INCIDENT MANAGEMENT TEAM 2**
JOHN PIERSON - INCIDENT COMMANDER

Map created: 6/29/2017 at: 1:59:08 PM

24,828 acres as of
June 28 2017 @ 2252 hrs



Legend

- Drop Point
- Helibase
- Helispot
- Incident Command Post
- Mobile Weather Unit
- Repeater
- Retardant/Mud Pit
- Safety Zone
- Water Source
- Completed Line
- Uncontrolled Fire Edge
- Division
- Branch
- Grapevine Botanical Area

Mgmt Action Points

LABEL

- Management Action Points
- Zone Break