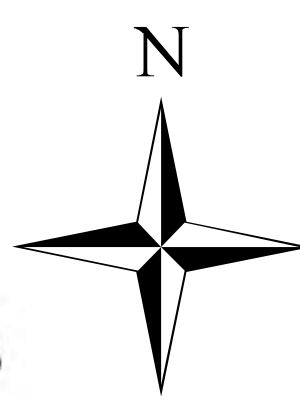
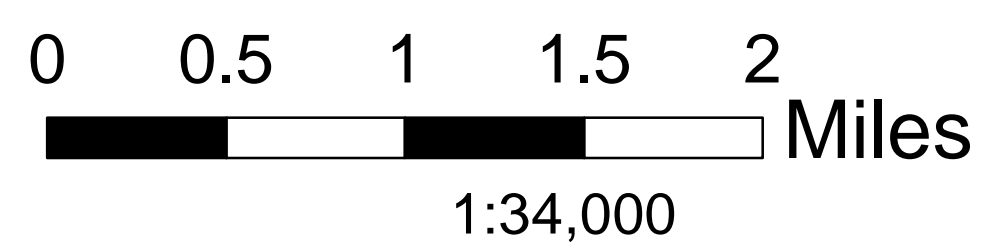


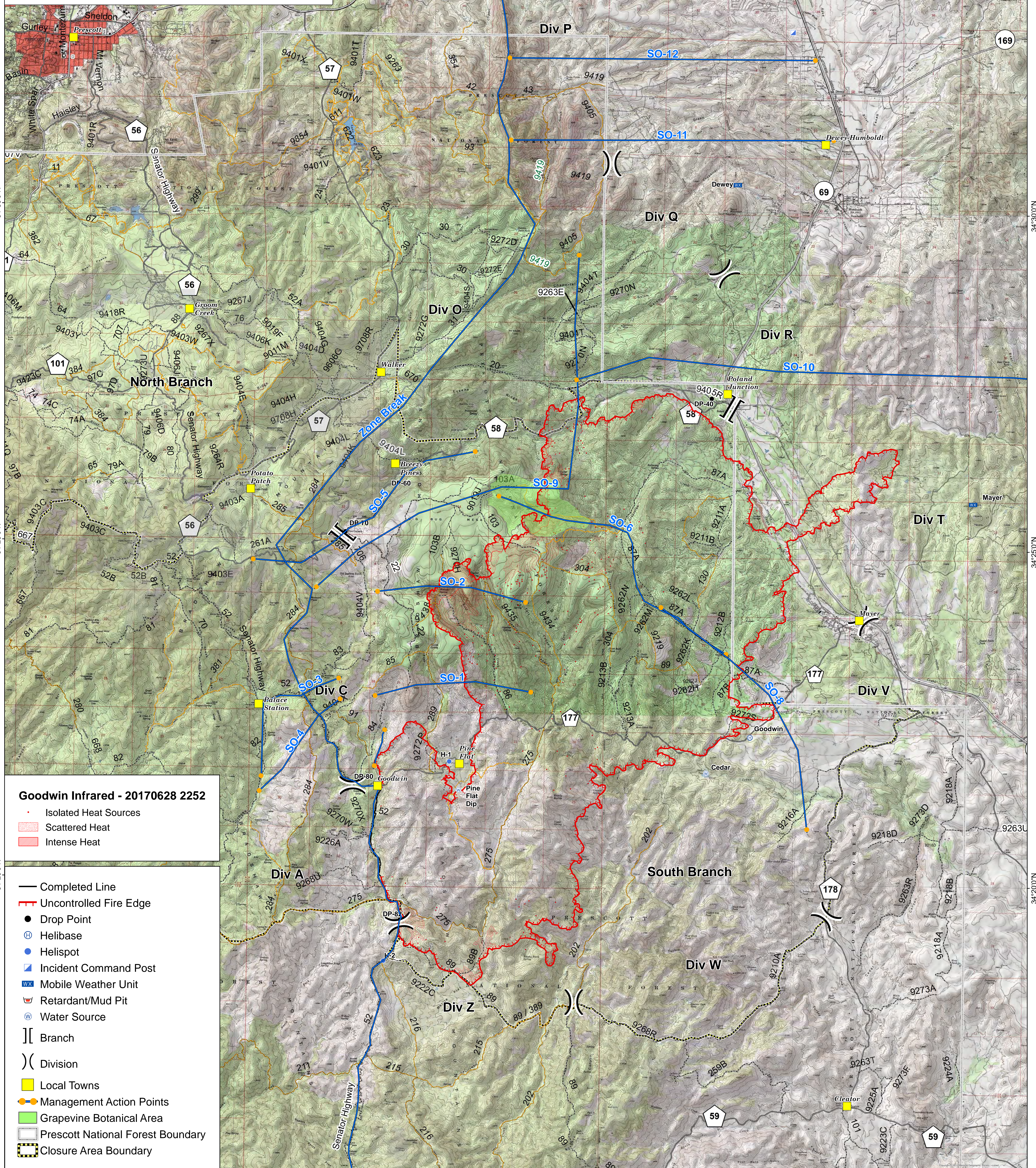
# Goodwin Fire AZ-PNF-904

## Operations

24,828 acres as of  
June 28, 2017 @ 2252 hrs



**SOUTHWEST AREA TYPE 1  
INCIDENT MANAGEMENT TEAM 2**  
JOHN PIERSON - INCIDENT COMMANDER



### Goodwin Infrared - 20170628 2252

- Isolated Heat Sources
- Scattered Heat
- Intense Heat

- Completed Line
- Uncontrolled Fire Edge
- Drop Point
- Helibase
- Helispot
- Incident Command Post
- Mobile Weather Unit
- Retardant/Mud Pit
- Water Source
- Branch
- Division
- Local Towns
- Management Action Points
- Grapevine Botanical Area
- Prescott National Forest Boundary
- Closure Area Boundary