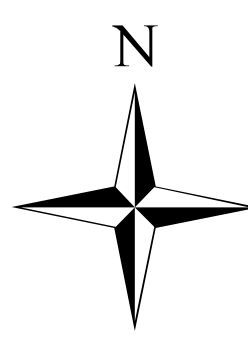


# Goodwin Fire AZ-PNF-904

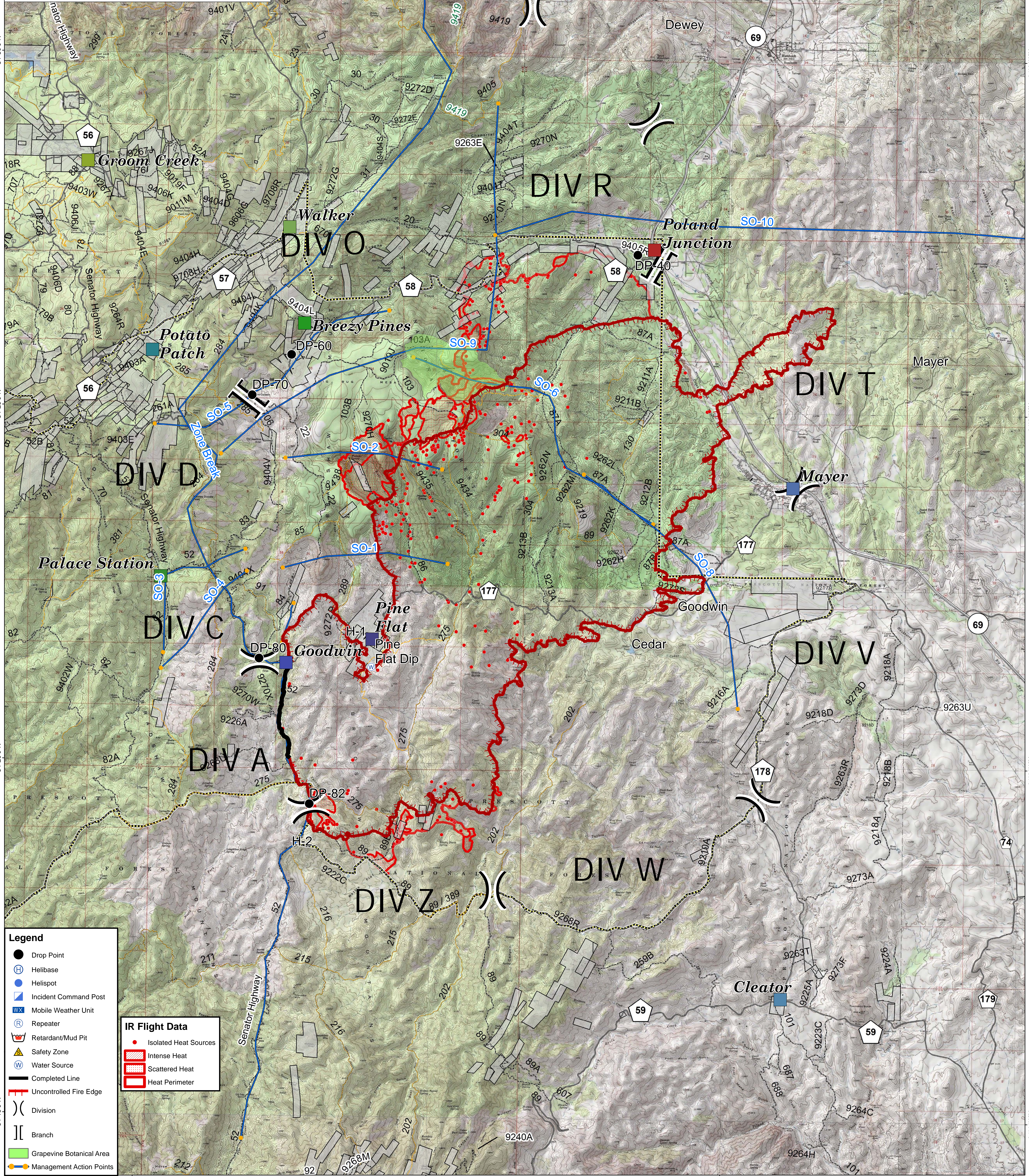
## Briefing

**SOUTHWEST AREA TYPE 1  
INCIDENT MANAGEMENT TEAM 2**  
JOHN PIERSON - INCIDENT COMMANDER

24,828 acres as of  
June 28 2017 @ 22521hrs



0 0.5 1 2 Miles



- Legend**
- Drop Point
  - ⊕ Helibase
  - ⊙ Helispot
  - ▣ Incident Command Post
  - ⊠ Mobile Weather Unit
  - ⊞ Repeater
  - ⊞ Retardant/Mud Pit
  - ⚠ Safety Zone
  - ⊞ Water Source
  - Completed Line
  - Uncontrolled Fire Edge
  - ) Division
  - | Branch
  - ▭ Grapevine Botanical Area
  - Management Action Points

**IR Flight Data**

- Isolated Heat Sources
- ▭ Intense Heat
- ▭ Scattered Heat
- ▭ Heat Perimeter