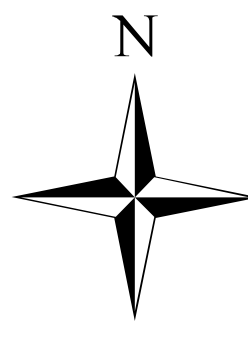


Goodwin Fire AZ-PNF-904

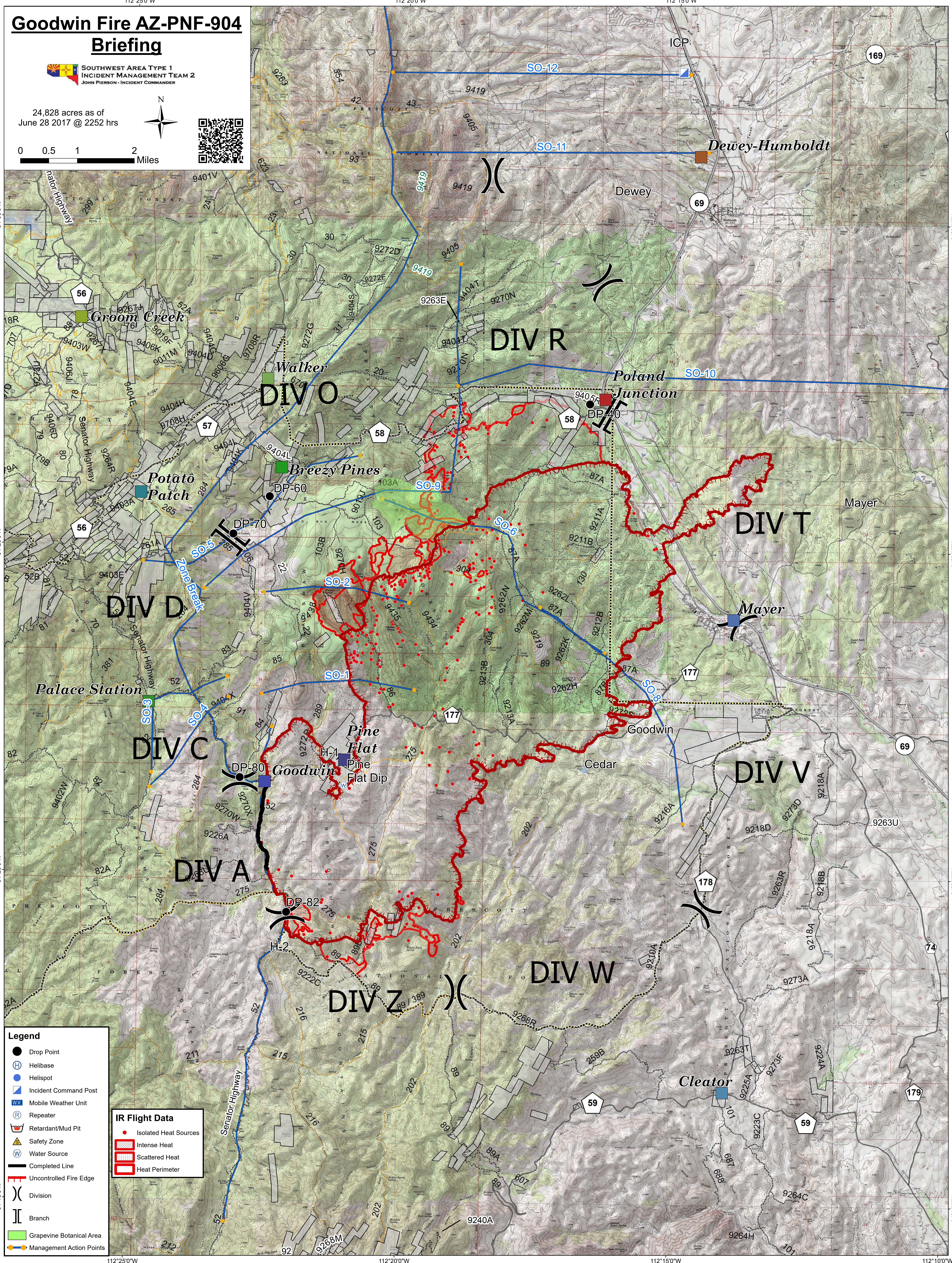
Briefing

**SOUTHWEST AREA TYPE 1
INCIDENT MANAGEMENT TEAM 2**
JOHN PIERSON - INCIDENT COMMANDER

24,828 acres as of
June 28 2017 @ 2252 hrs



0 0.5 1 2 Miles



- Legend**
- Drop Point
 - ⊕ Helibase
 - ⊙ Helispot
 - ▣ Incident Command Post
 - ⊞ Mobile Weather Unit
 - ⊞ Repeater
 - ⊞ Retardant/Mud Pit
 - ⊞ Safety Zone
 - ⊞ Water Source
 - Completed Line
 - Uncontrolled Fire Edge
 - ⌋ Division
 - ⌋ Branch
 - ▭ Grapevine Botanical Area
 - Management Action Points

IR Flight Data

- Isolated Heat Sources
- ▭ Intense Heat
- ▭ Scattered Heat
- ▭ Heat Perimeter