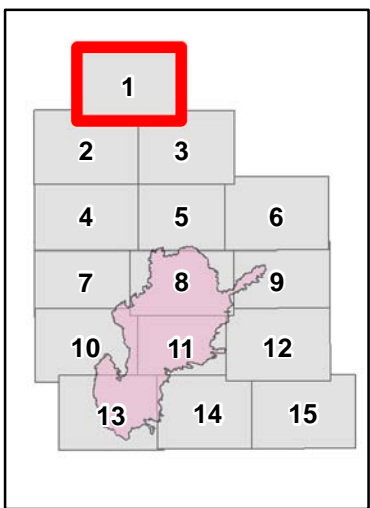
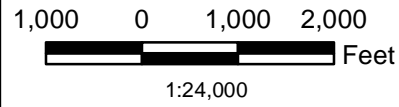
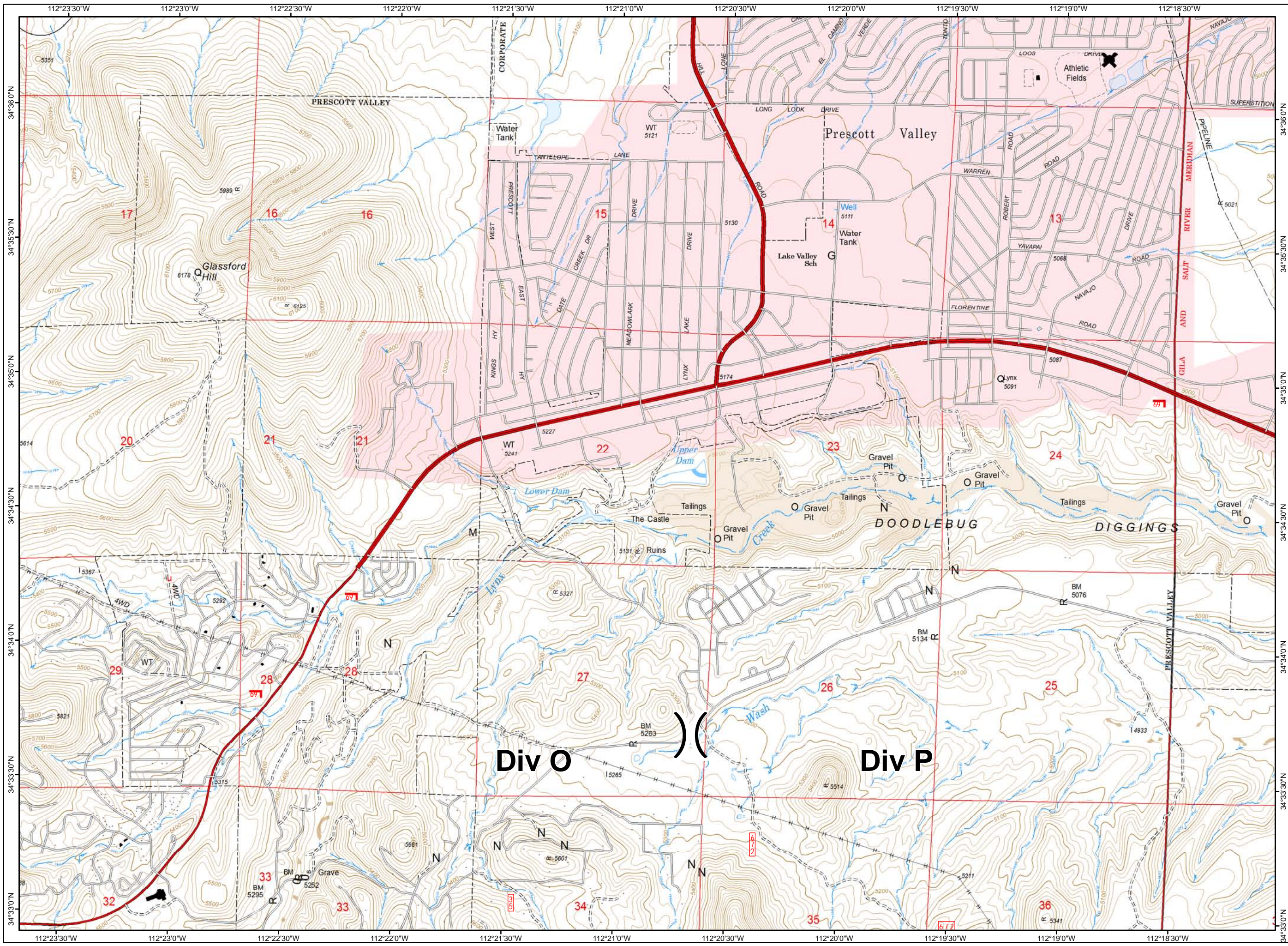


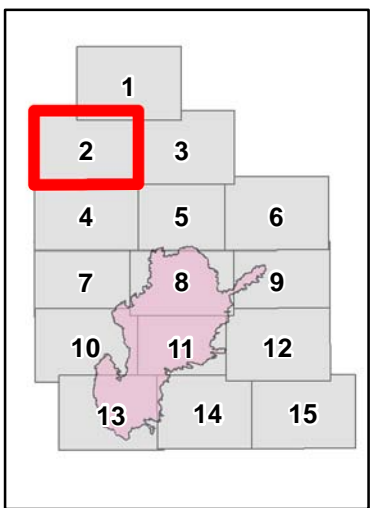
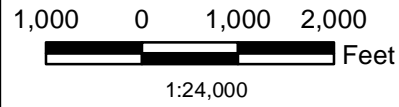
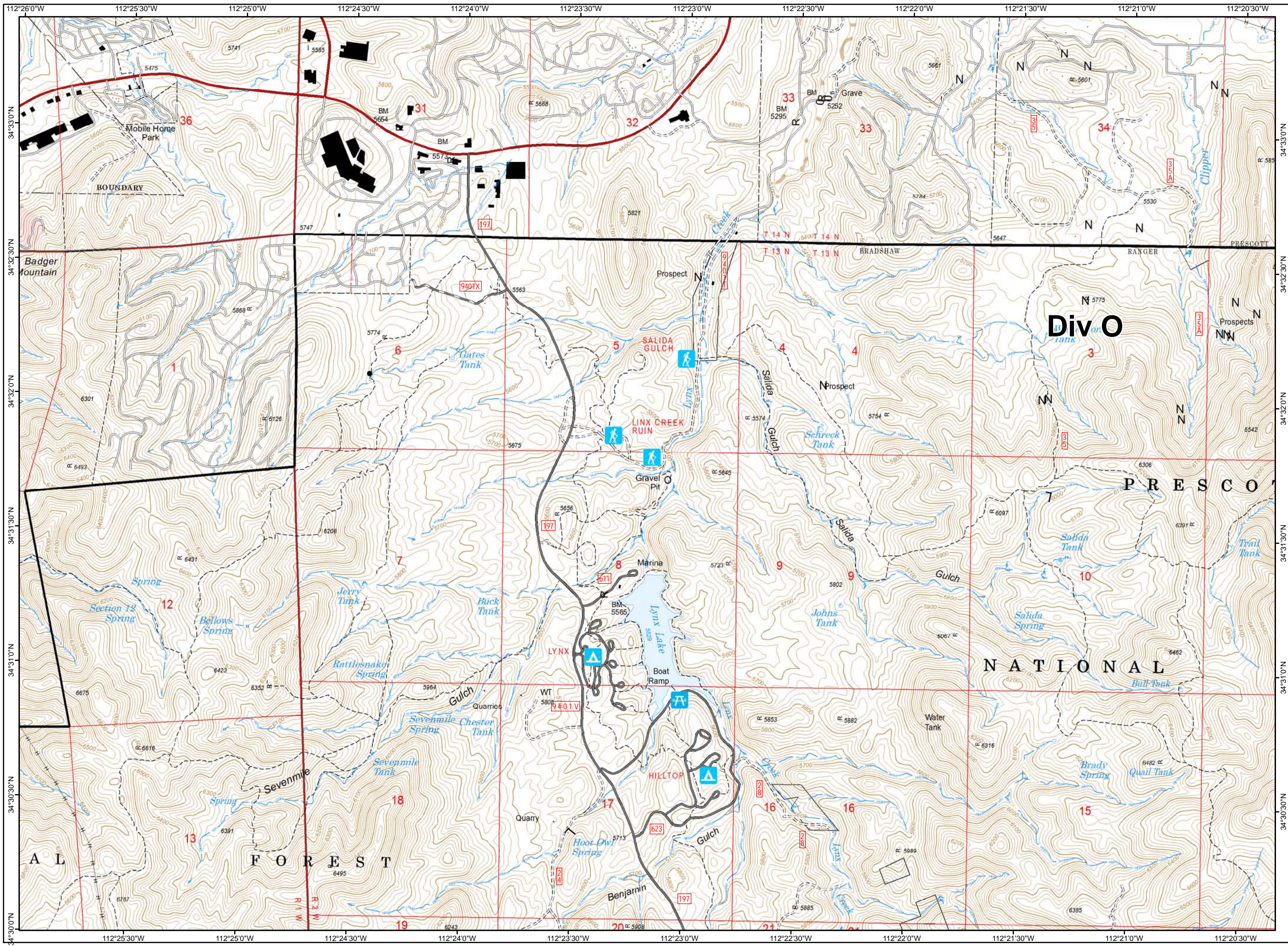
# Goodwin Fire IAP Map AZPNF-000904 July 30, 2017 Day Shift NAD 83 UTM Zone 12N

) ( Division








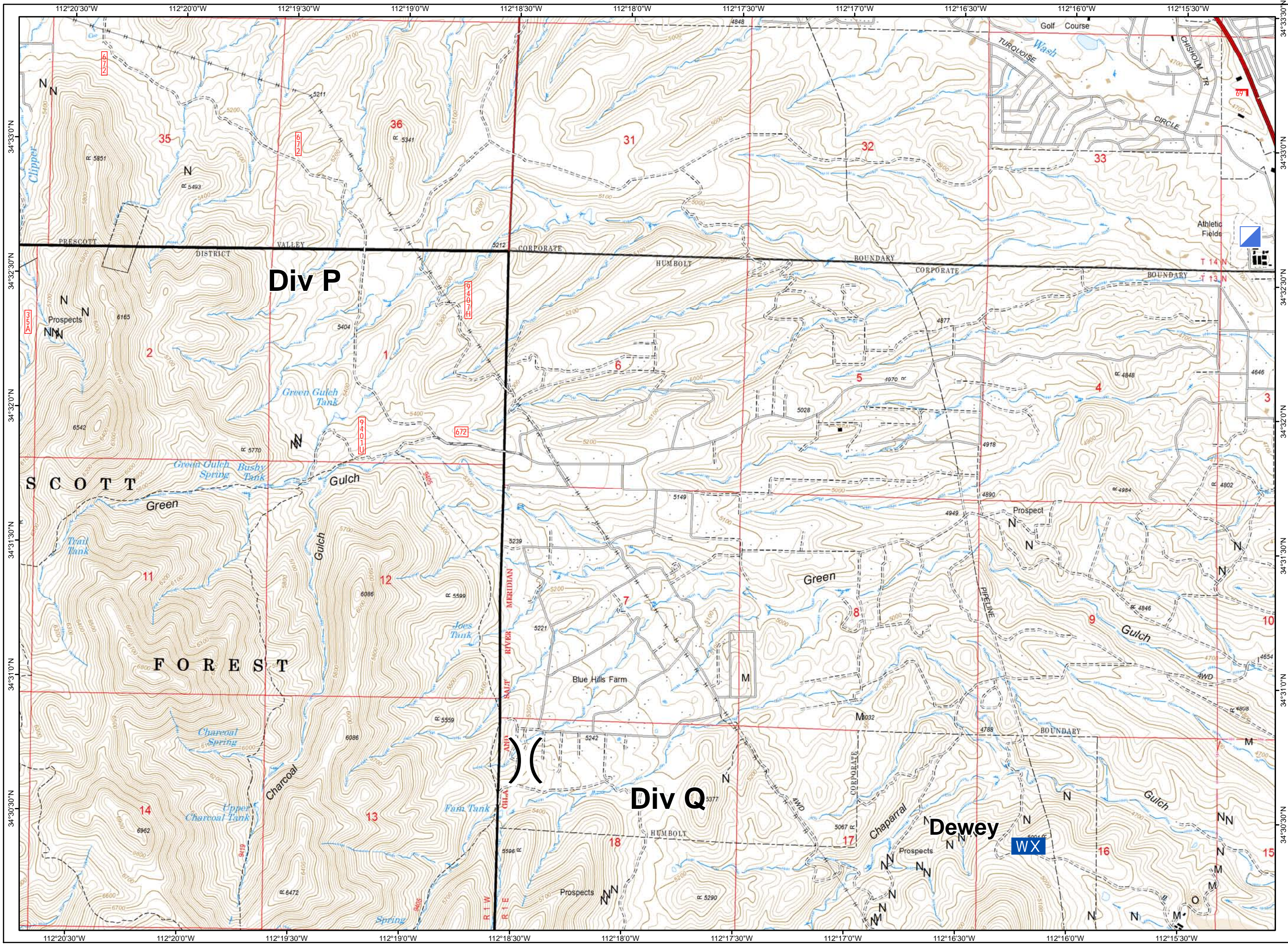
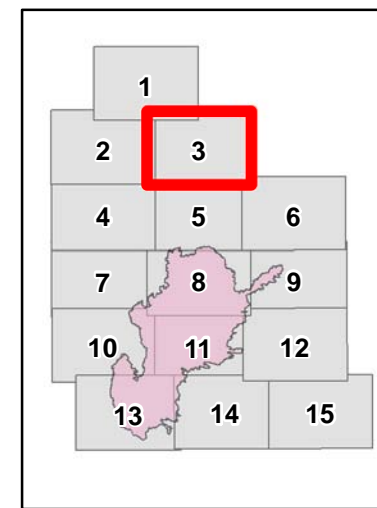
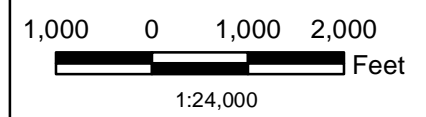
# Goodwin Fire IAP Map AZPNF-000904 July 30, 2017 Day Shift NAD 83 UTM Zone 12N





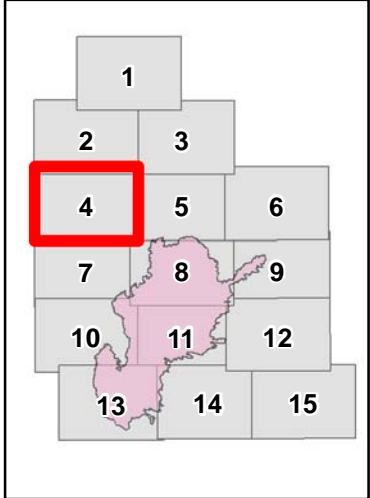
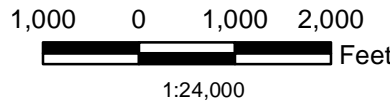
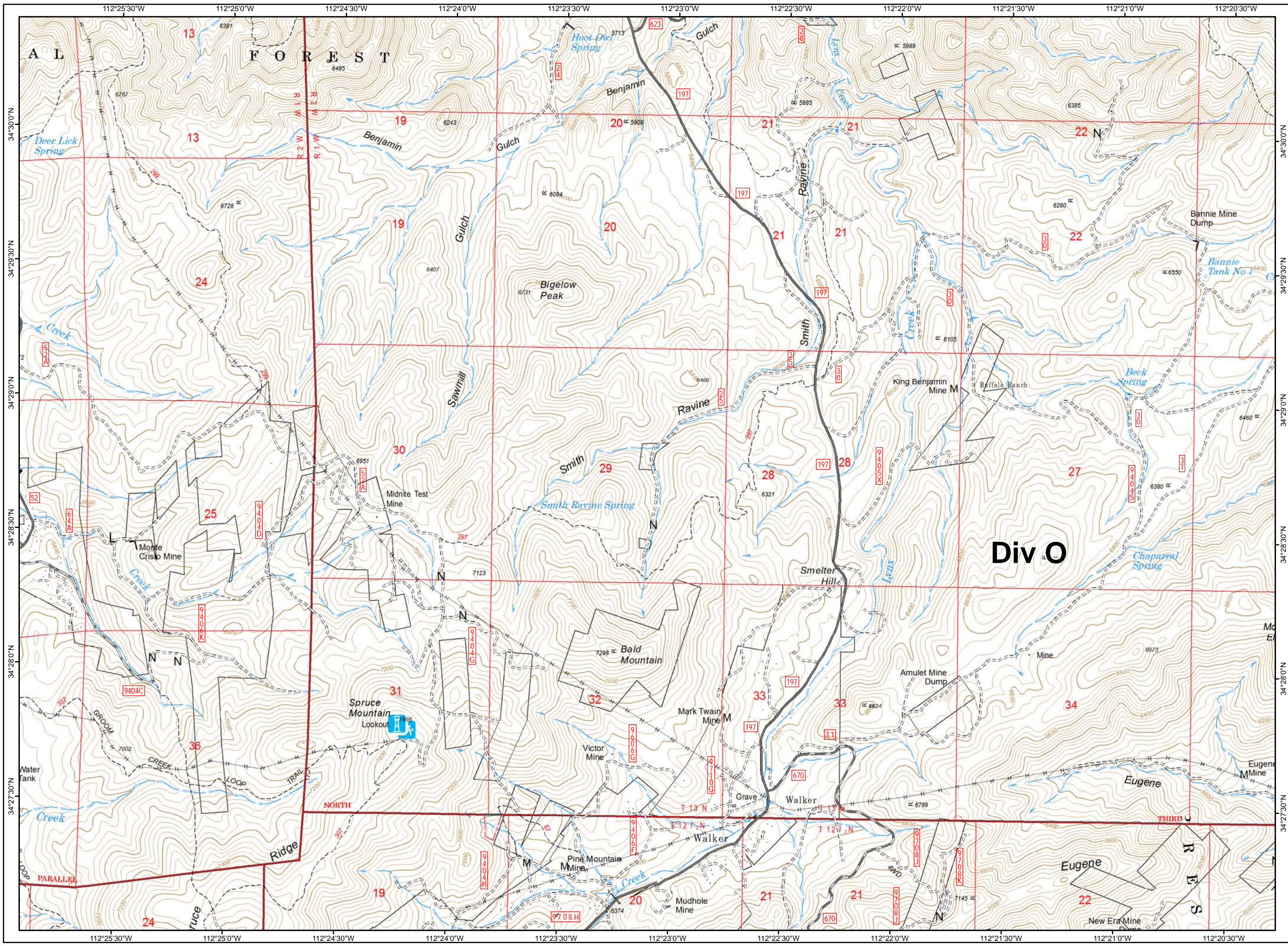
# Goodwin Fire IAP Map AZPNF-000904 July 30, 2017 Day Shift NAD 83 UTM Zone 12N

-  Division
-  ICP
-  RAWS




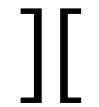






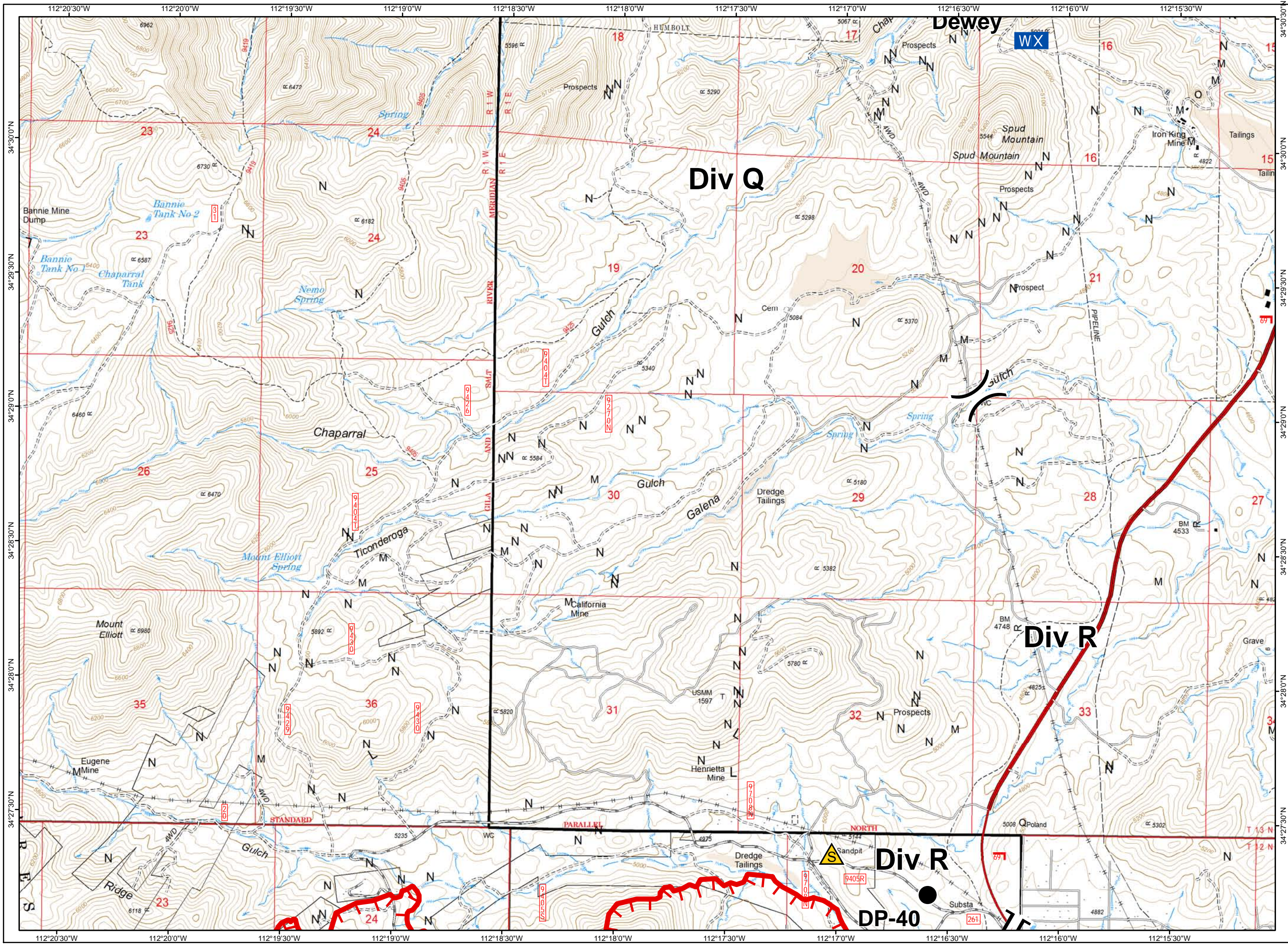
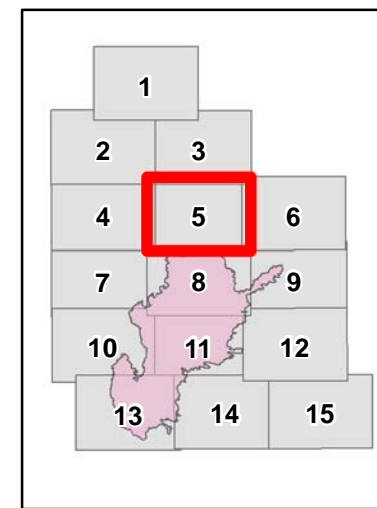
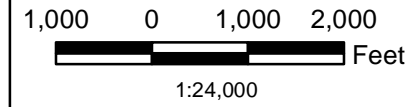
**Goodwin Fire  
IAP Map  
AZPNF-000904  
July 30, 2017  
Day Shift  
NAD 83 UTM  
Zone 12N**





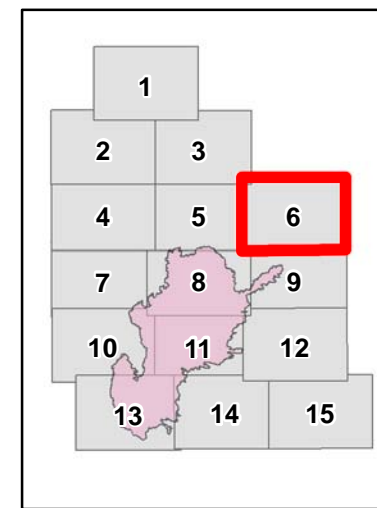
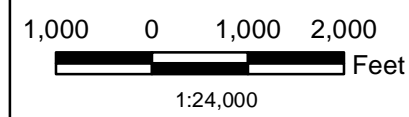
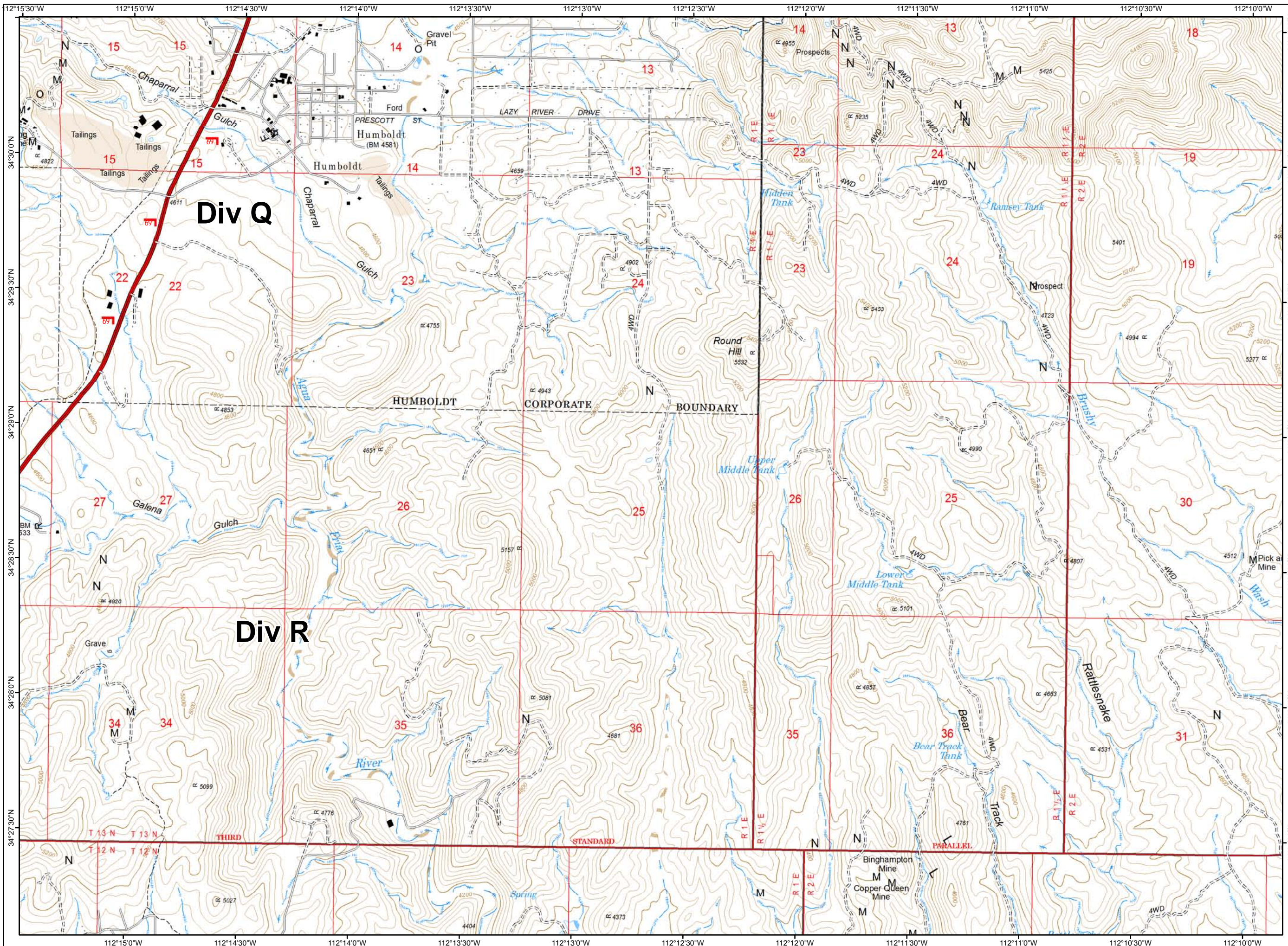
# Goodwin Fire IAP Map AZPNF-000904 July 30, 2017 Day Shift NAD 83 UTM Zone 12N

-  Division
-  Branch
-  Drop Point
-  RAWS
-  Safety Zone
-  Uncontrolled Fire Edge








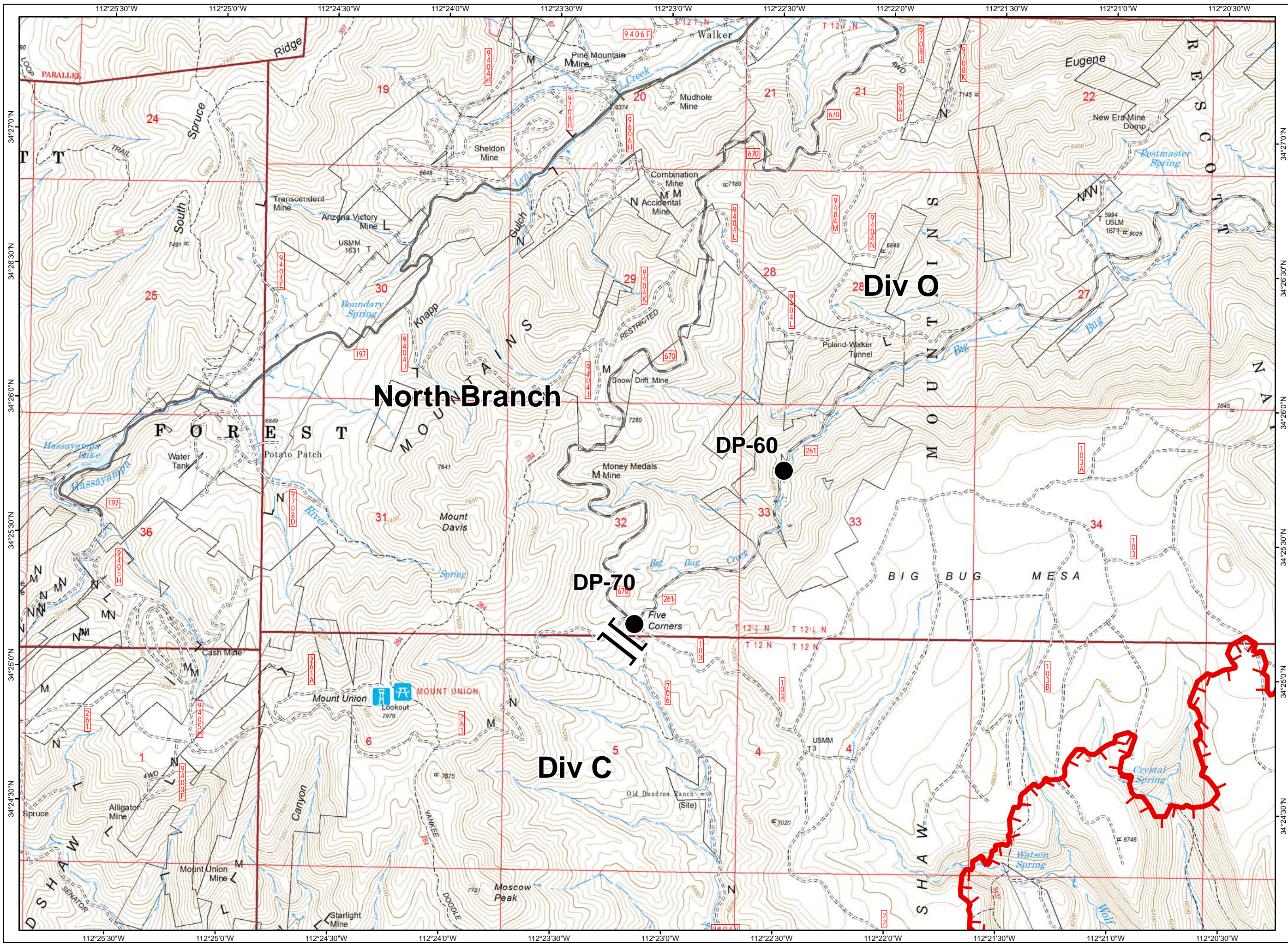
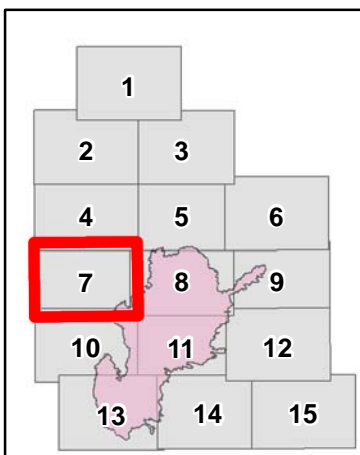
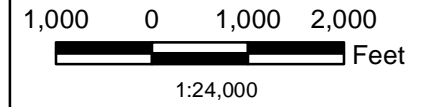
# Goodwin Fire IAP Map AZPNF-000904 July 30, 2017 Day Shift NAD 83 UTM Zone 12N





# Goodwin Fire IAP Map AZPNF-000904 July 30, 2017 Day Shift NAD 83 UTM Zone 12N

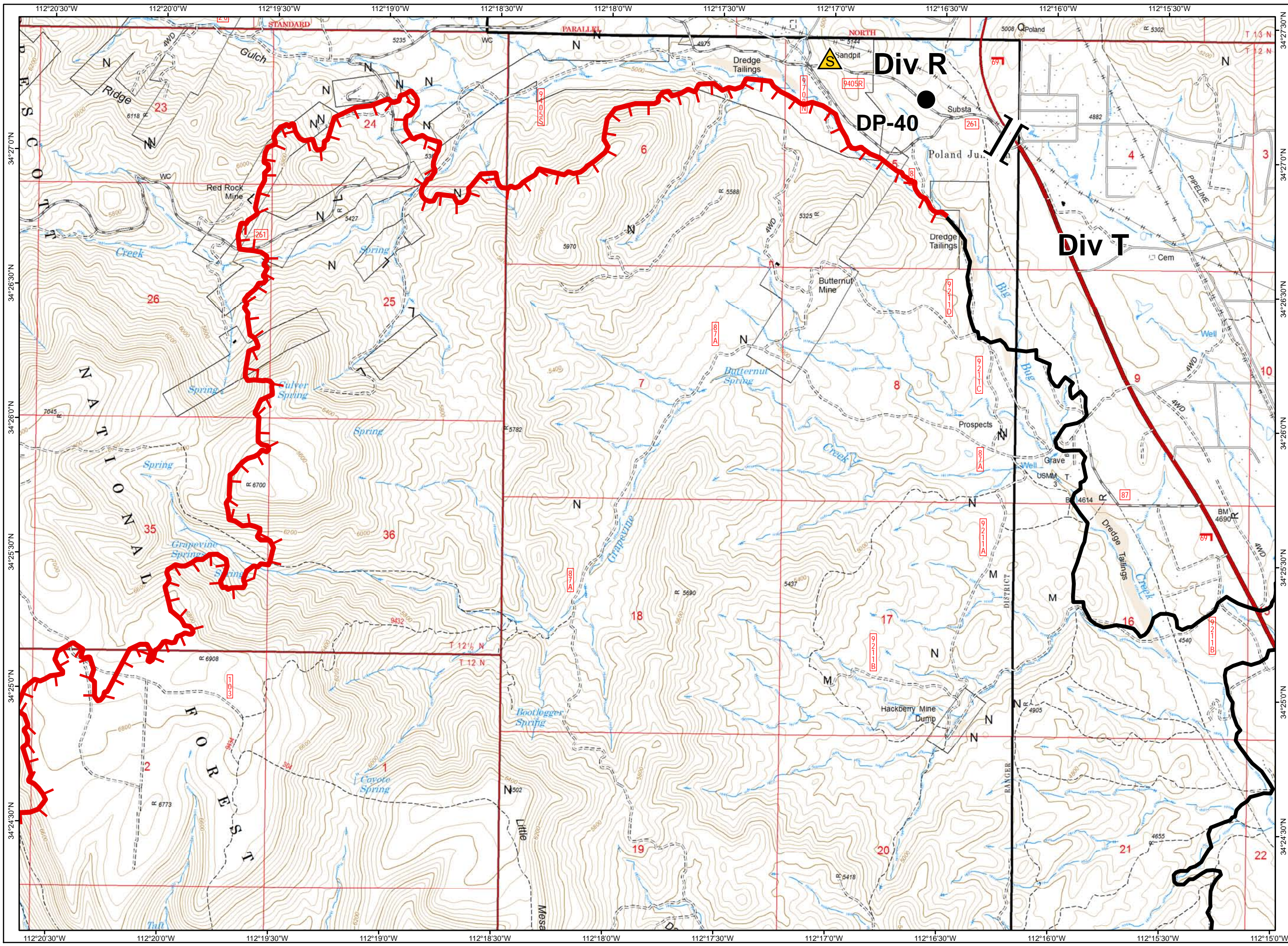
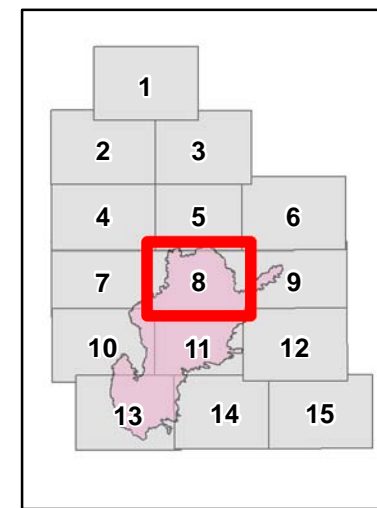
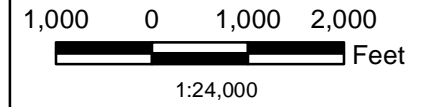
-  Branch
-  Drop Point
-  Uncontrolled Fire Edge





# Goodwin Fire IAP Map AZPNF-000904 July 30, 2017 Day Shift NAD 83 UTM Zone 12N

- Branch
- Drop Point
- Safety Zone
- Uncontrolled Fire Edge
- Completed Line





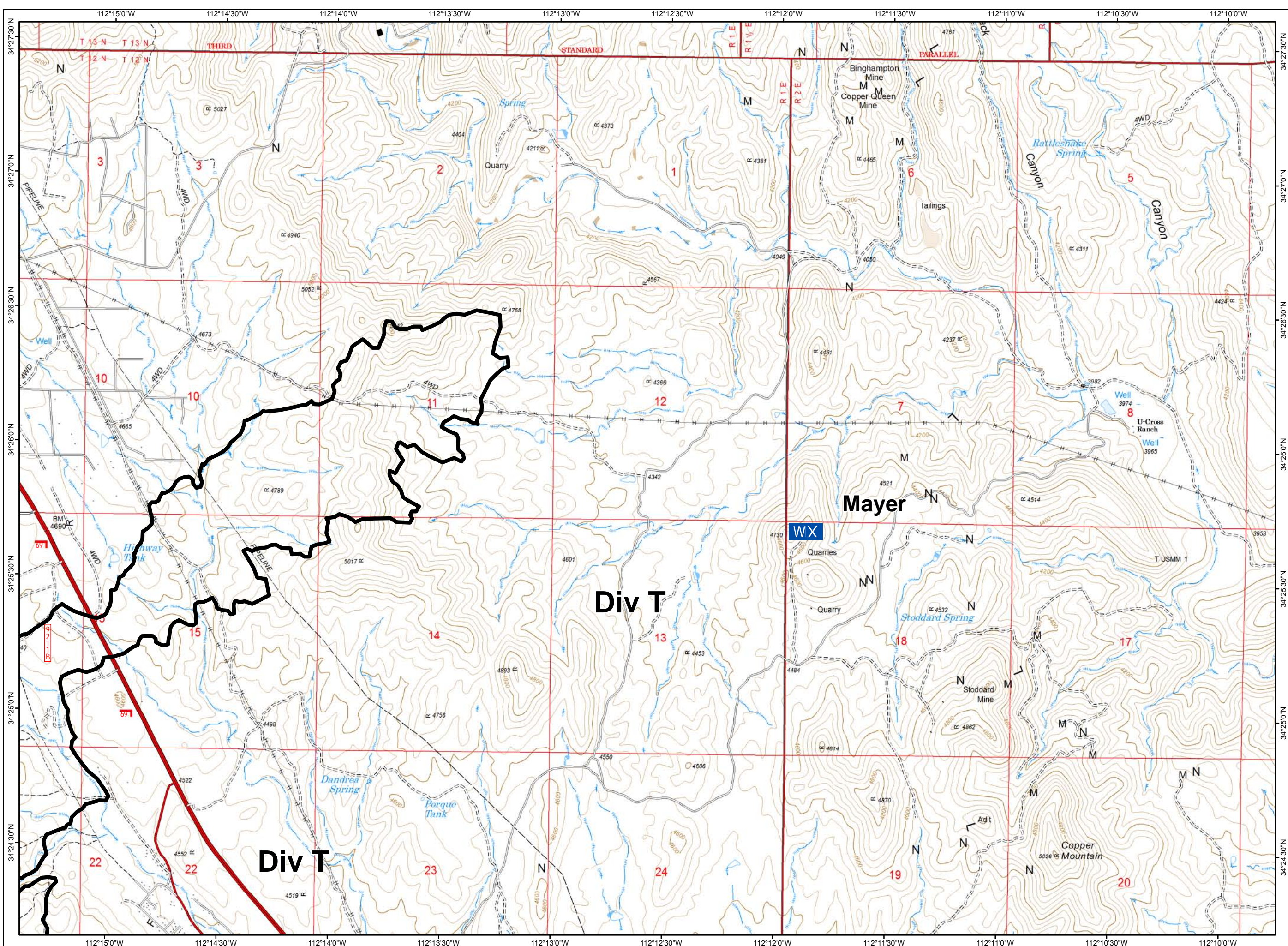
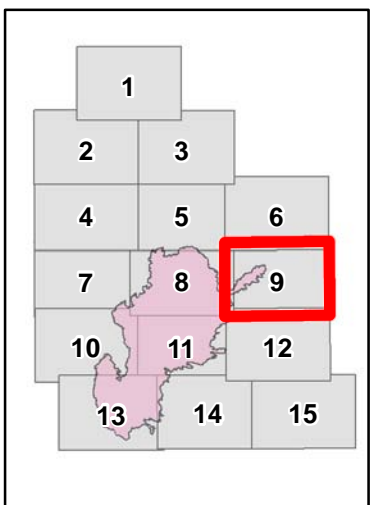
# Goodwin Fire IAP Map AZPNF-000904 July 30, 2017 Day Shift NAD 83 UTM Zone 12N

**WX** RAWS

**—** Completed Line



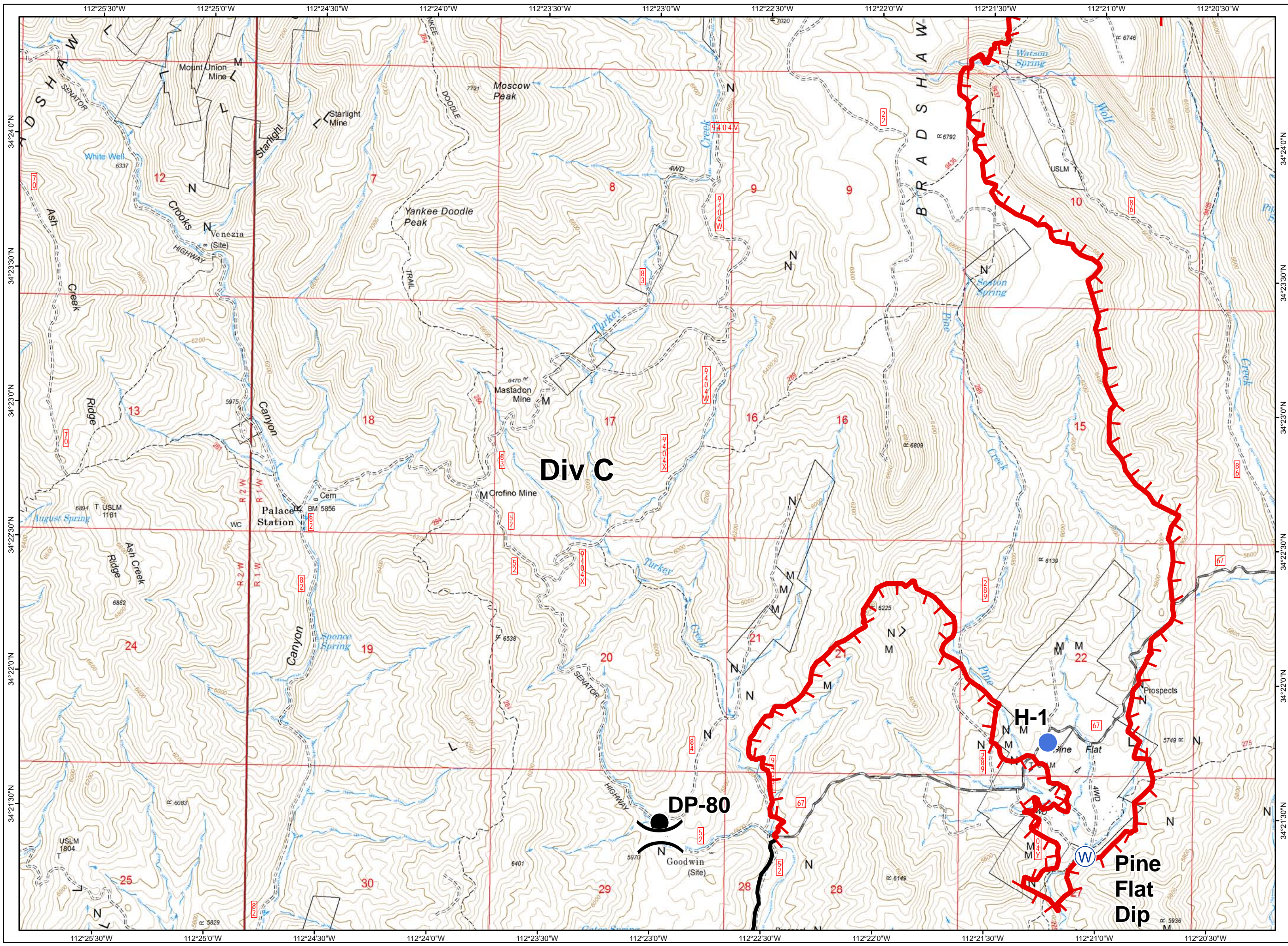
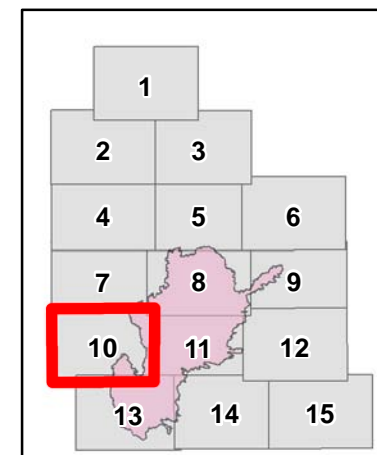
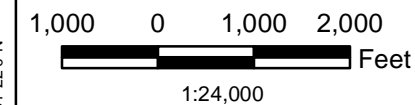
1,000 0 1,000 2,000  
Feet  
1:24,000





# Goodwin Fire IAP Map AZPNF-000904 July 30, 2017 Day Shift NAD 83 UTM Zone 12N

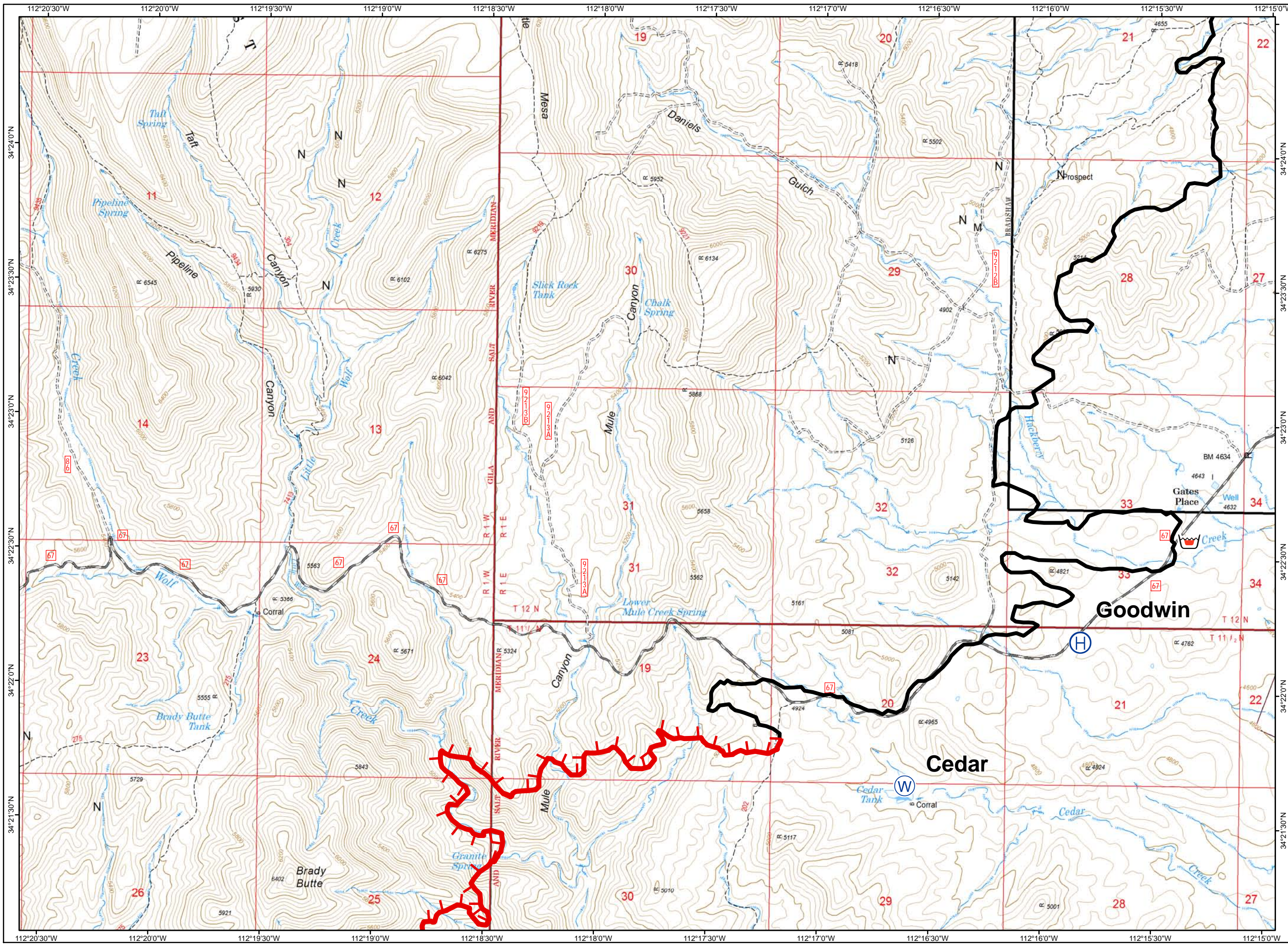
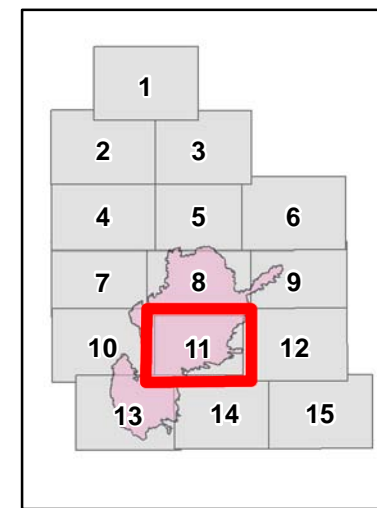
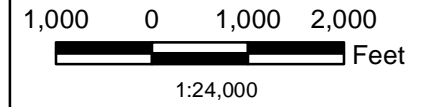
- Division
- Drop Point
- Helispot
- Water Source
- Uncontrolled Fire Edge
- Completed Line





# Goodwin Fire IAP Map AZPNF-000904 July 30, 2017 Day Shift NAD 83 UTM Zone 12N

-  Helibase
-  Retardant/... Pit
-  Water Source
-  Uncontrolled Fire Edge
-  Completed Line





# Goodwin Fire IAP Map AZPNF-000904 July 30, 2017 Day Shift NAD 83 UTM Zone 12N

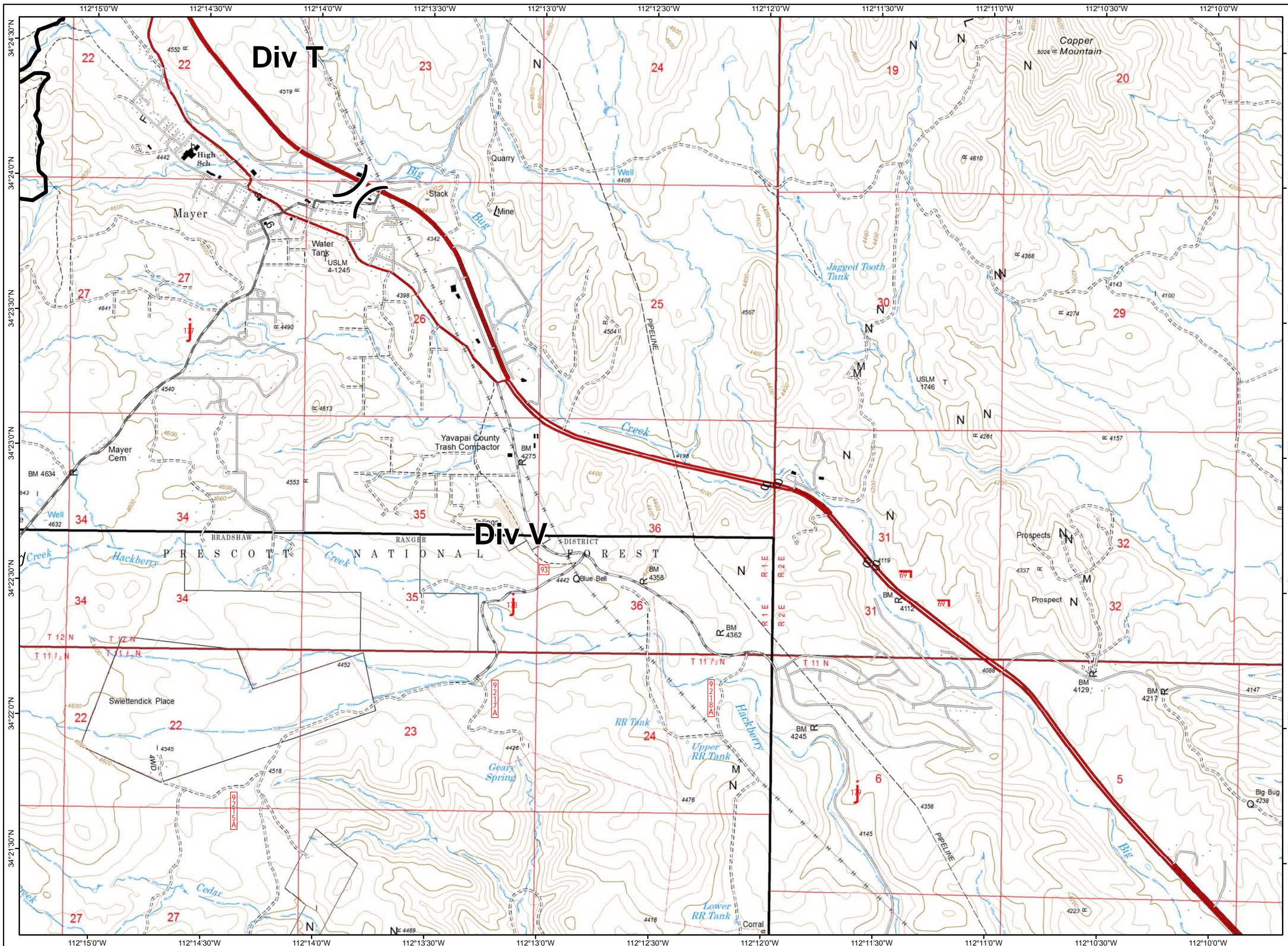
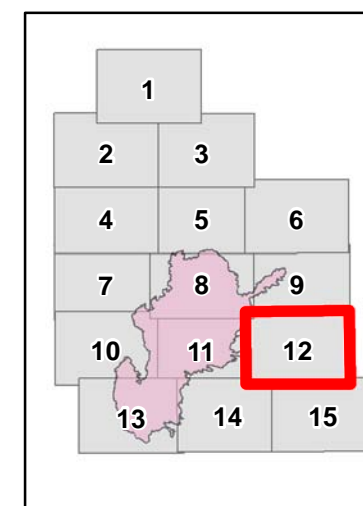
) ( Division

Retardant/...  
Pit

Completed  
Line



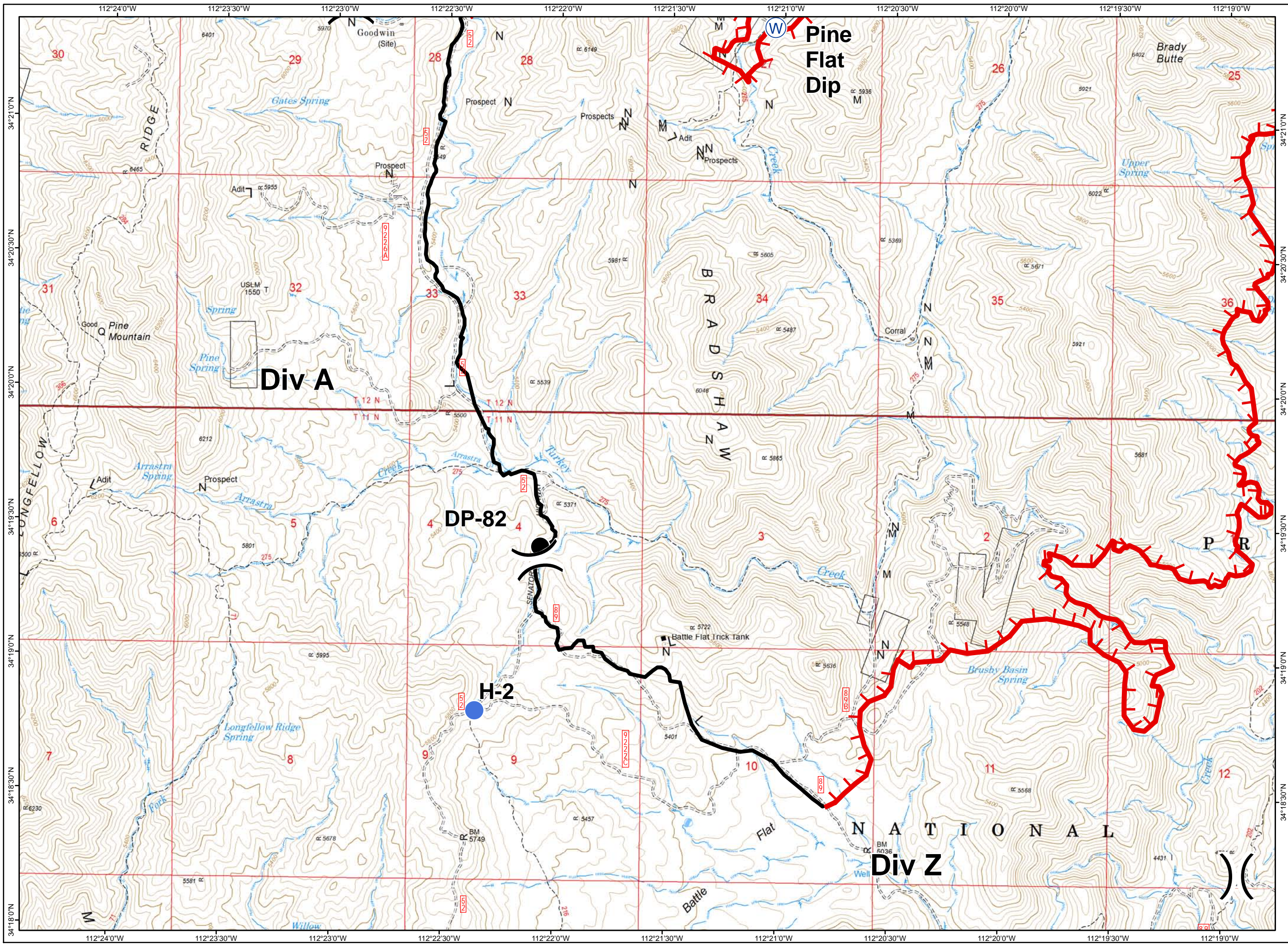
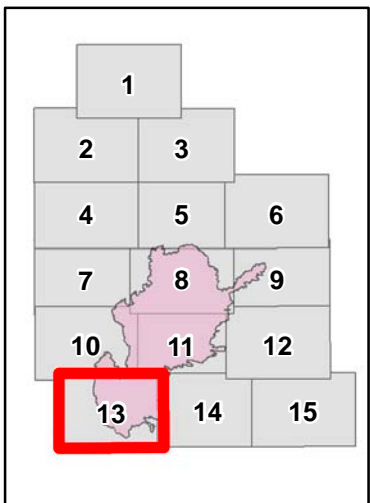
1,000 0 1,000 2,000  
Feet  
1:24,000





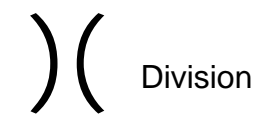
# Goodwin Fire IAP Map AZPNF-000904 July 30, 2017 Day Shift NAD 83 UTM Zone 12N

- Division
- Drop Point
- Helispot
- Water Source
- Uncontrolled Fire Edge
- Completed Line





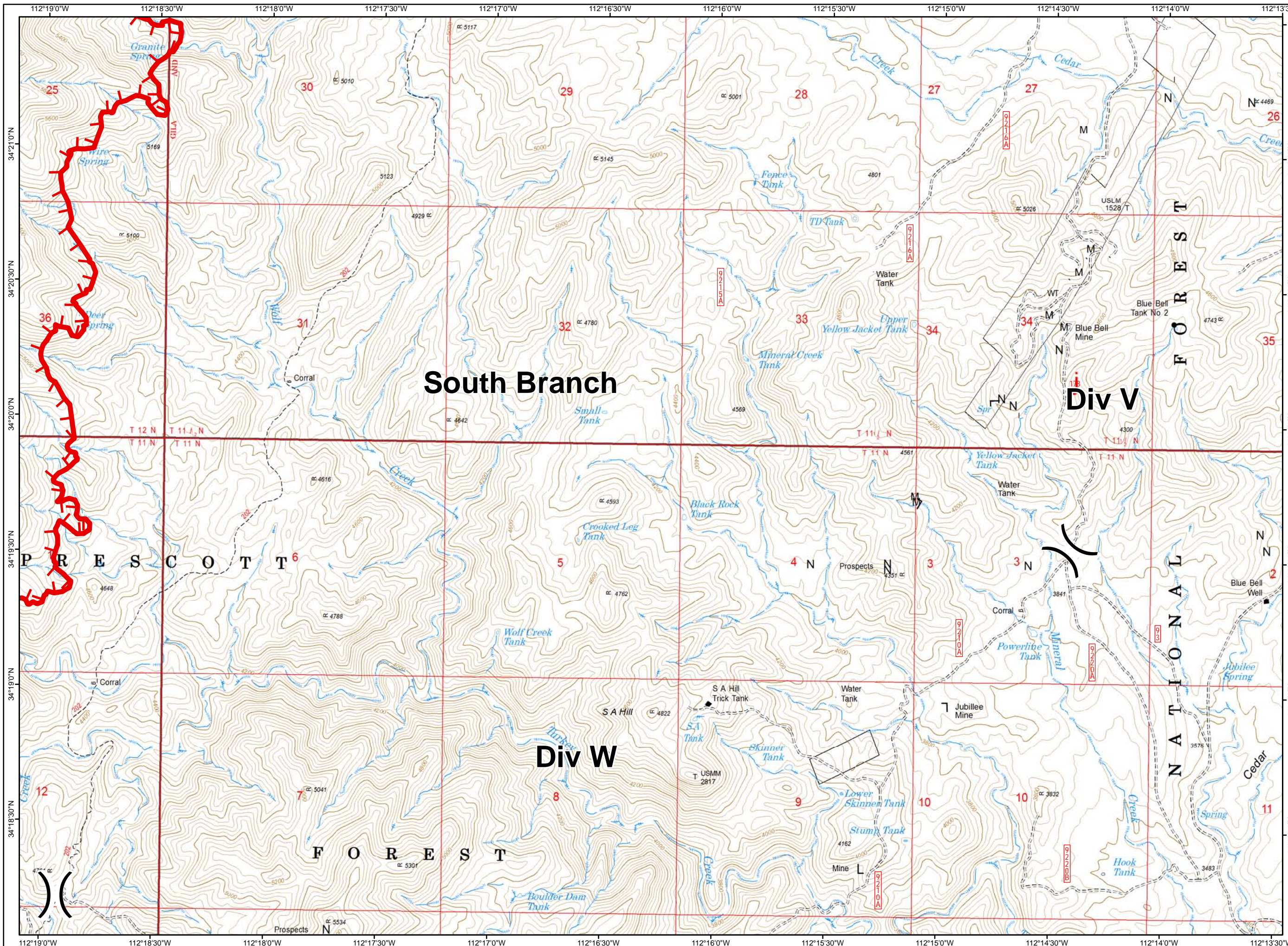
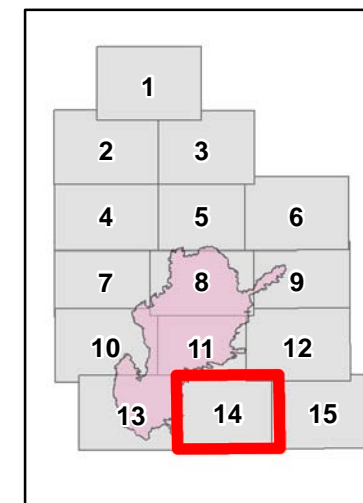
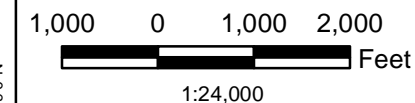
# Goodwin Fire IAP Map AZPNF-000904 July 30, 2017 Day Shift NAD 83 UTM Zone 12N



Division

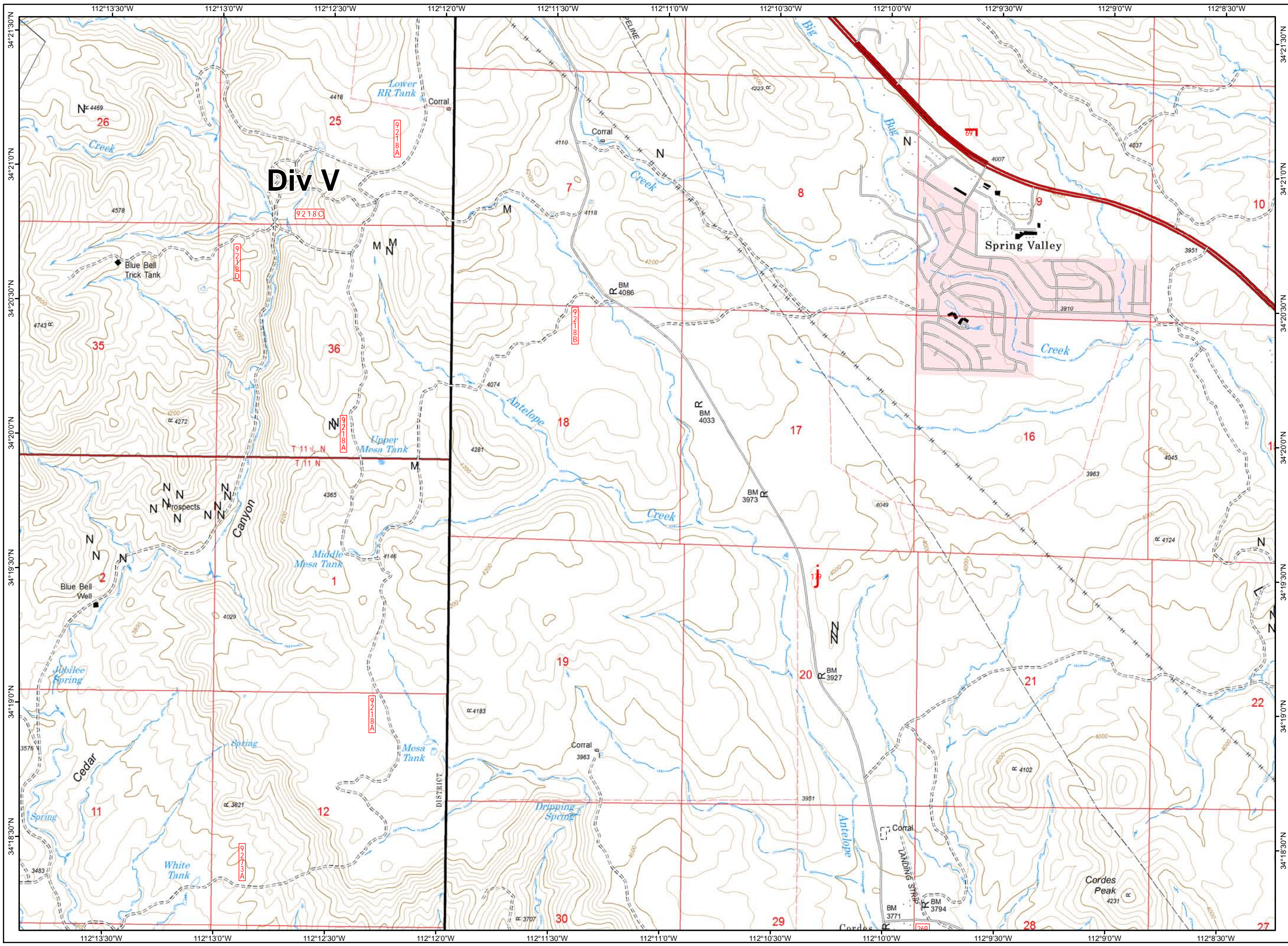


Uncontrolled  
Fire Edge





# Goodwin Fire IAP Map AZPNF-000904 July 30, 2017 Day Shift NAD 83 UTM Zone 12N



**Div V**

Spring Valley

