



**SOUTHWEST AREA TYPE 1
INCIDENT MANAGEMENT TEAM 2**
JOHN PIERSON - INCIDENT COMMANDER

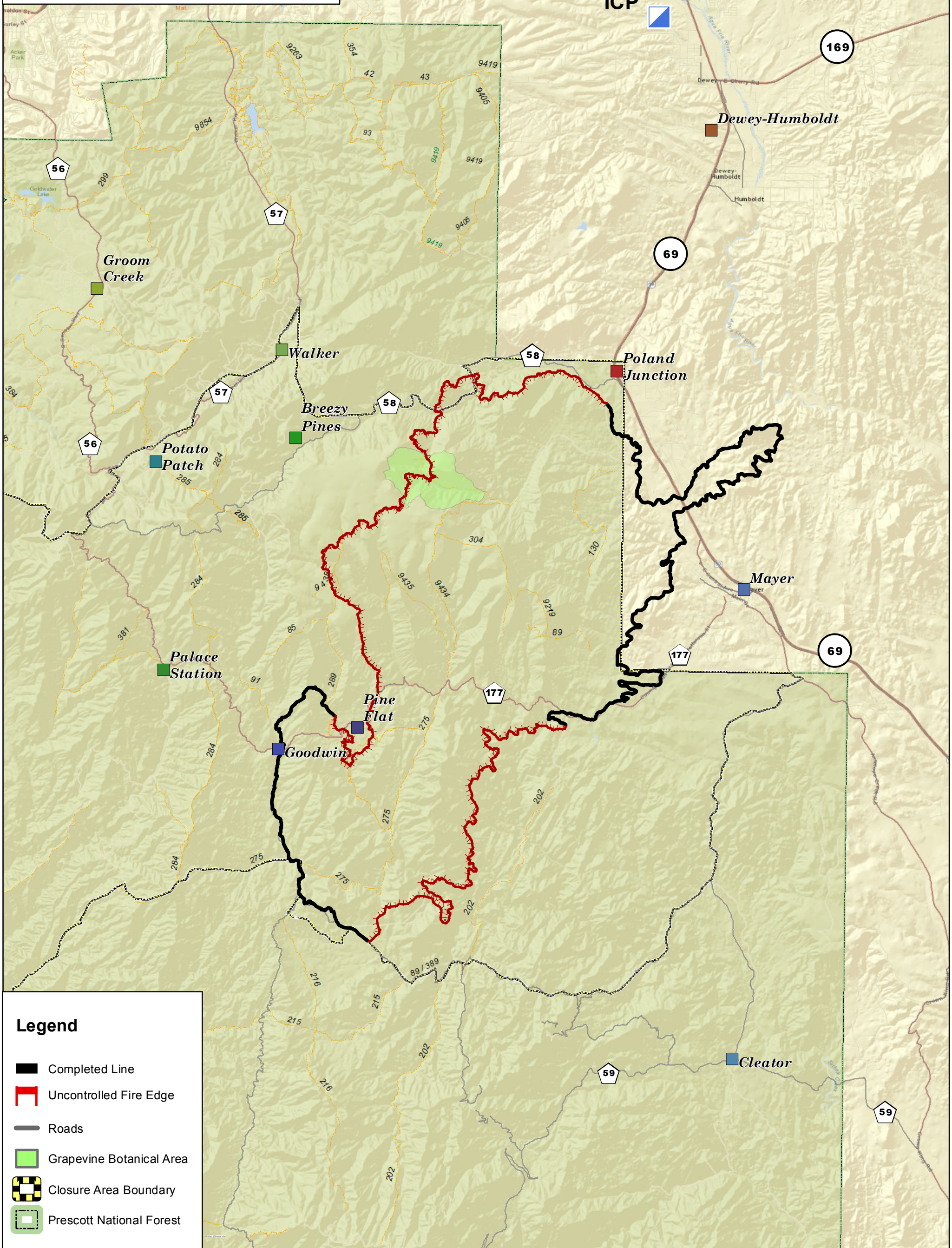
Goodwin Fire AZ-PNF-904 Public Information Map

06/30/2017

25856 acres

0 0.75 1.5 3 Miles

1:100,000



Legend

- Completed Line
- Uncontrolled Fire Edge
- Roads
- Grapevine Botanical Area
- Closure Area Boundary
- Prescott National Forest