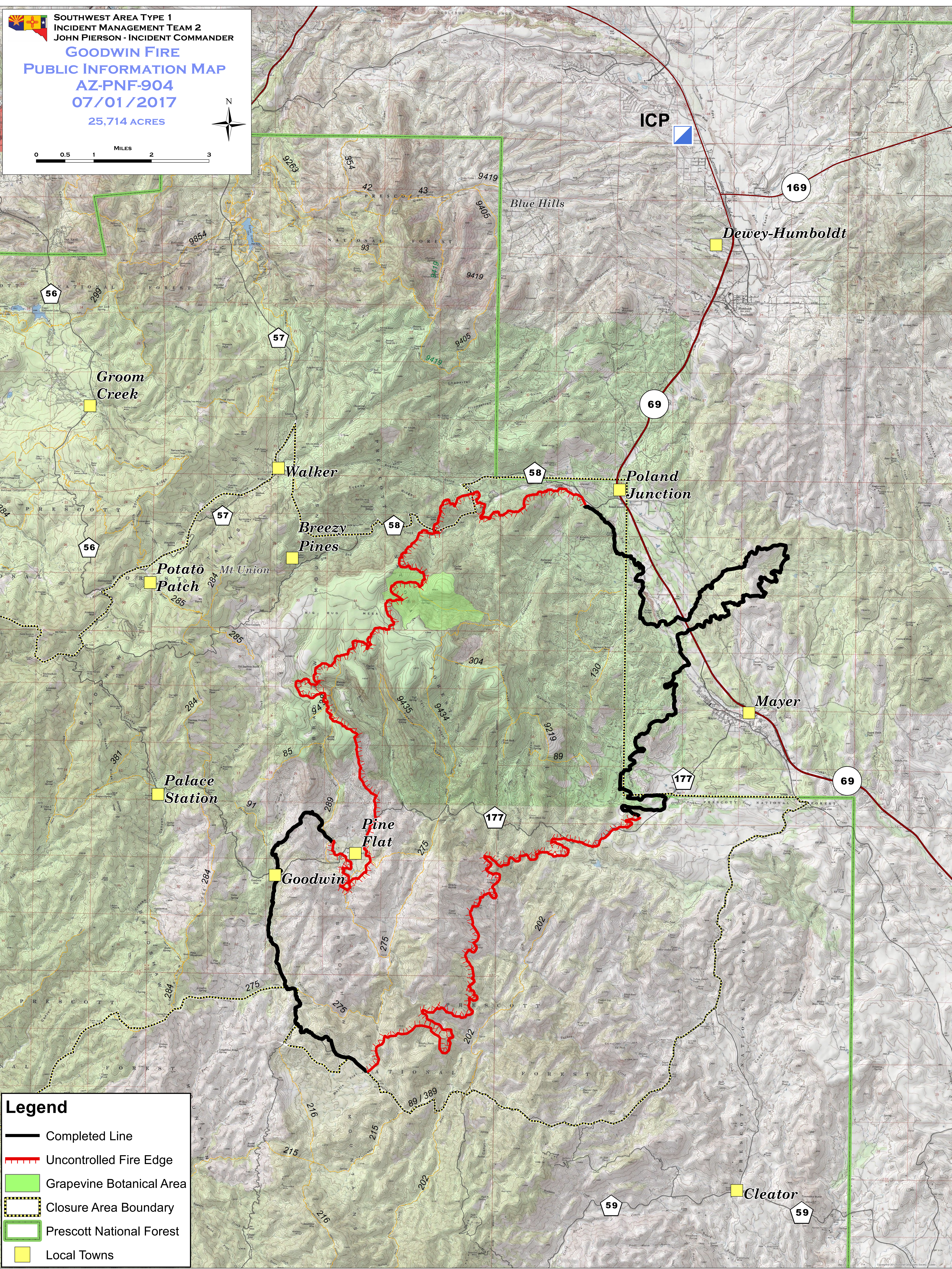
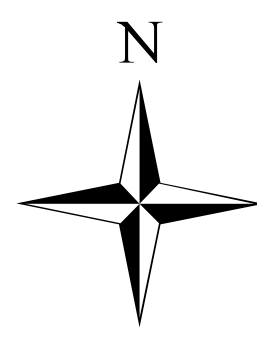







SOUTHWEST AREA TYPE 1
INCIDENT MANAGEMENT TEAM 2
JOHN PIERSON - INCIDENT COMMANDER
GOODWIN FIRE
PUBLIC INFORMATION MAP
AZ-PNF-904
07/01/2017
25,714 ACRES



Legend

-  Completed Line
-  Uncontrolled Fire Edge
-  Grapevine Botanical Area
-  Closure Area Boundary
-  Prescott National Forest
-  Local Towns