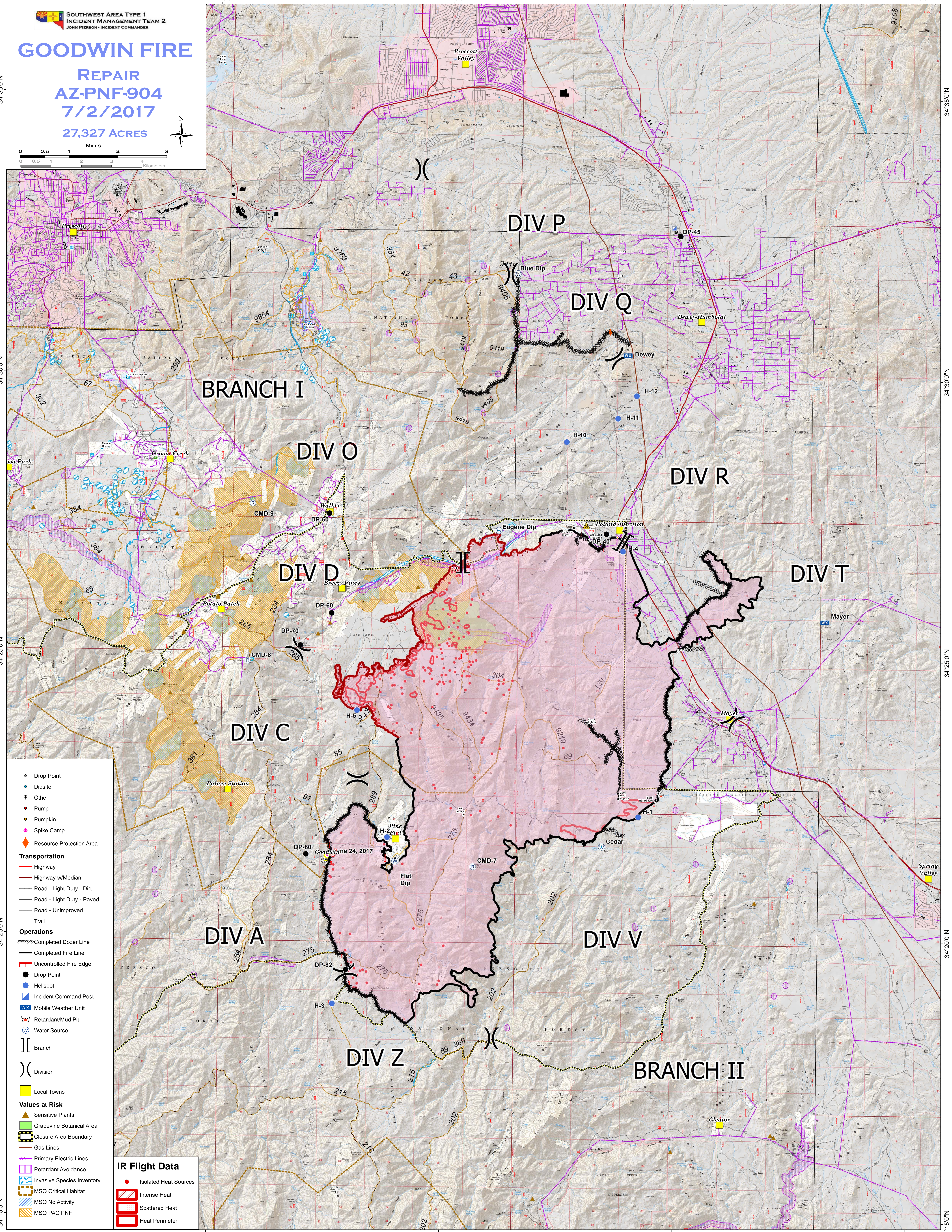
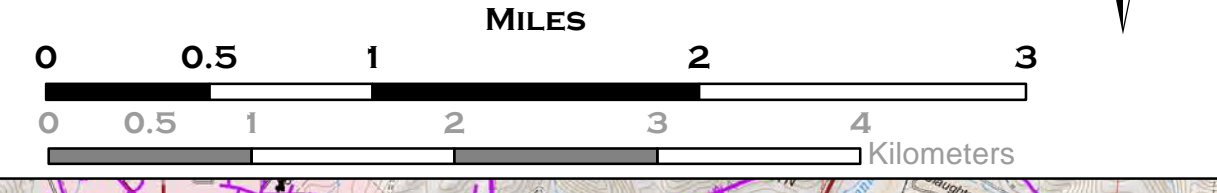


# GOODWIN FIRE

REPAIR  
AZ-PNF-904  
7/2/2017  
27,327 ACRES



- Drop Point
- Dipsite
- Other
- Pump
- Pumpkin
- ★ Spike Camp
- ◆ Resource Protection Area
- Transportation**
  - Highway
  - Highway w/Median
  - Road - Light Duty - Dirt
  - Road - Light Duty - Paved
  - Road - Unimproved
  - Trail
- Operations**
  - Completed Dozer Line
  - Completed Fire Line
  - Uncontrolled Fire Edge
  - Drop Point
  - Hellsite
  - Incident Command Post
  - WX Mobile Weather Unit
  - Retardant/Mud Pit
  - W Water Source
  - ]] Branch
  - ) Division
- Local Towns
- Values at Risk**
  - ▲ Sensitive Plants
  - Grapevine Botanical Area
  - Closure Area Boundary
  - Gas Lines
  - Primary Electric Lines
  - Retardant Avoidance
  - Invasive Species Inventory
  - MSO Critical Habitat
  - MSO No Activity
  - MSO PAC PNF
- IR Flight Data**
  - Isolated Heat Sources
  - Intense Heat
  - Scattered Heat
  - Heat Perimeter