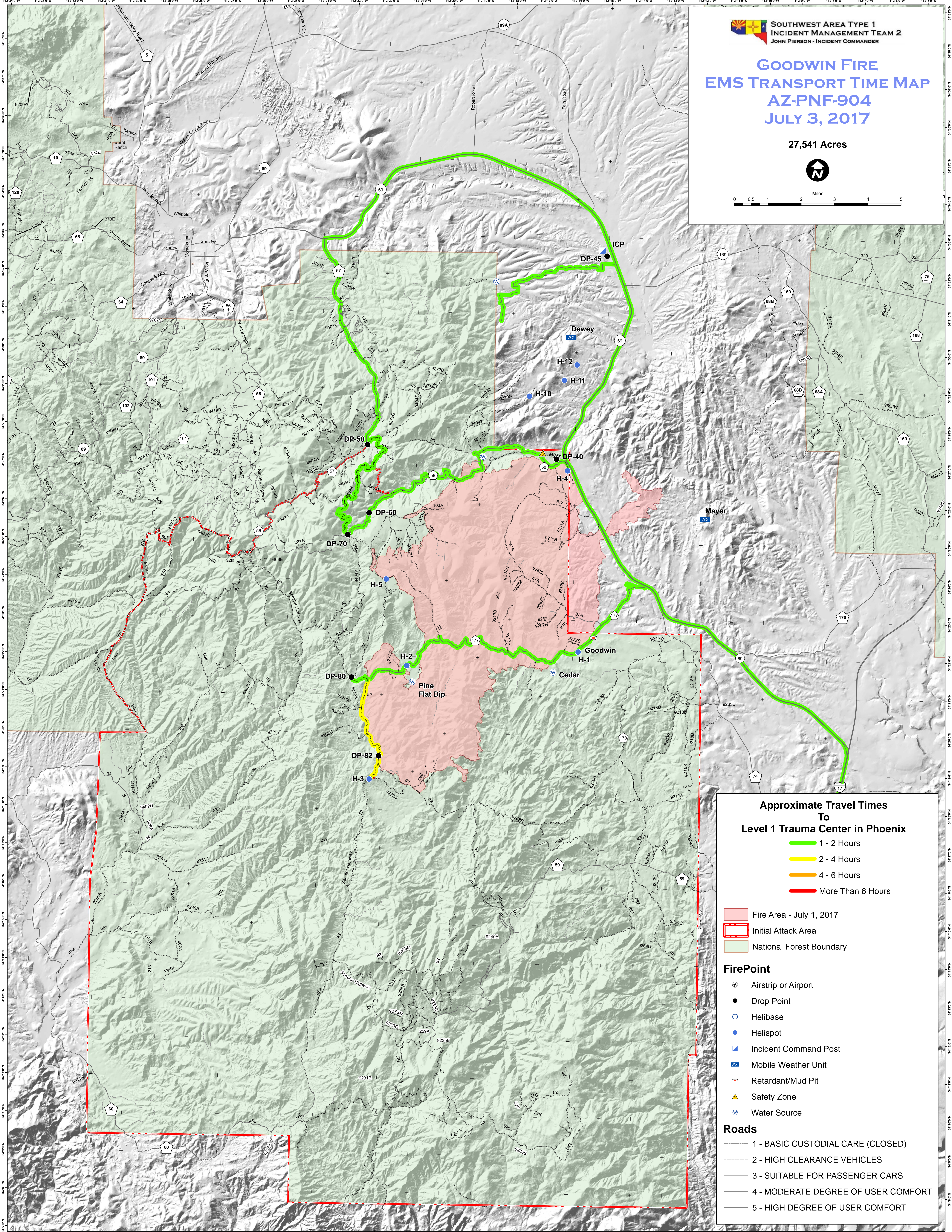
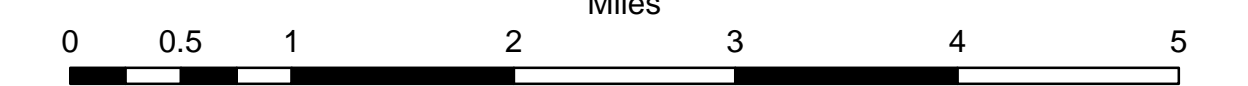


GOODWIN FIRE EMS TRANSPORT TIME MAP AZ-PNF-904 JULY 3, 2017

27,541 Acres



**Approximate Travel Times
To
Level 1 Trauma Center in Phoenix**

- 1 - 2 Hours
- 2 - 4 Hours
- 4 - 6 Hours
- More Than 6 Hours

- ▭ Fire Area - July 1, 2017
- ▭ Initial Attack Area
- ▭ National Forest Boundary

FirePoint

- Airstrip or Airport
- Drop Point
- Helibase
- Helispot
- Incident Command Post
- Mobile Weather Unit
- Retardant/Mud Pit
- Safety Zone
- Water Source

Roads

- 1 - BASIC CUSTODIAL CARE (CLOSED)
- 2 - HIGH CLEARANCE VEHICLES
- 3 - SUITABLE FOR PASSENGER CARS
- 4 - MODERATE DEGREE OF USER COMFORT
- 5 - HIGH DEGREE OF USER COMFORT