

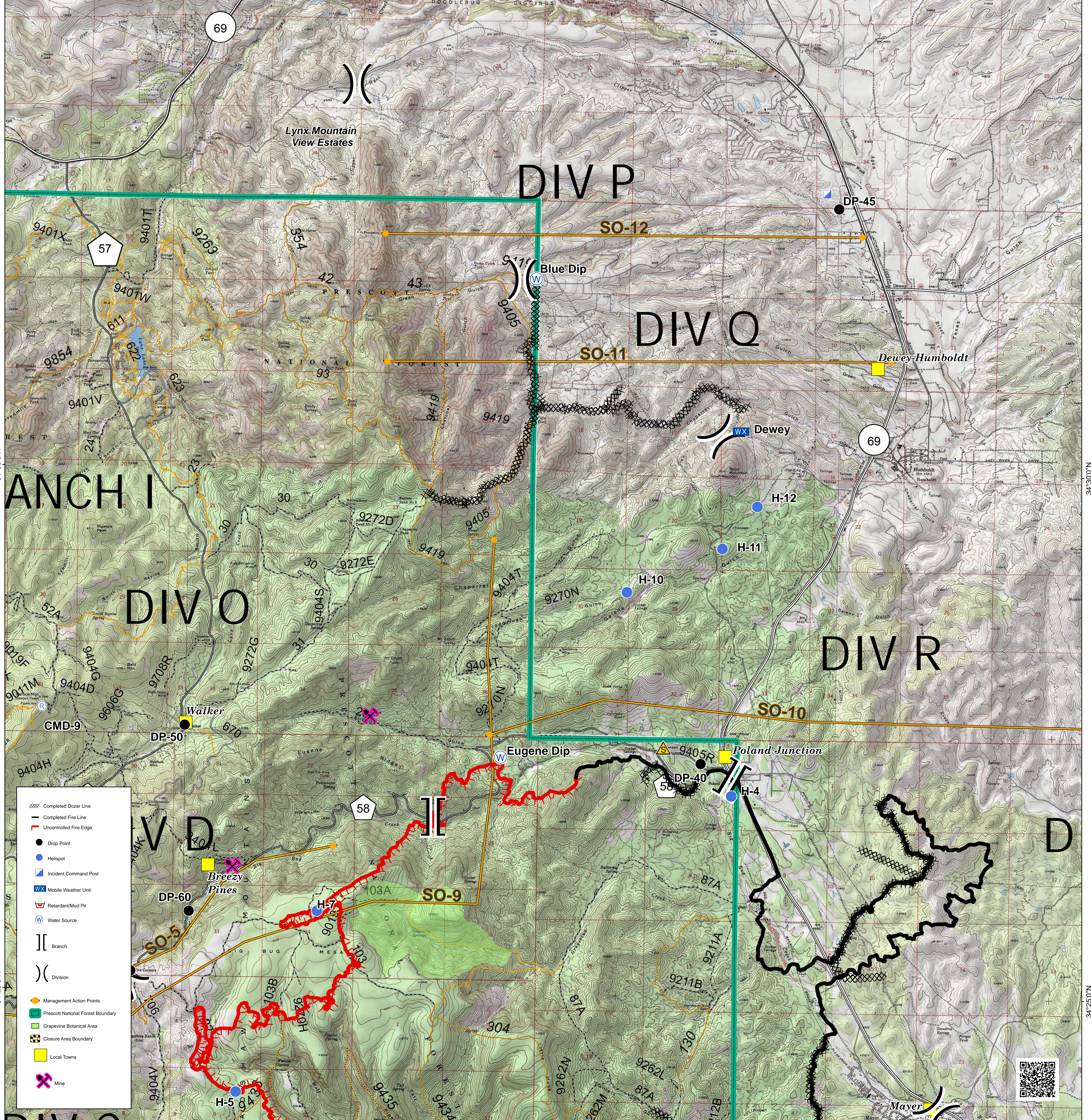
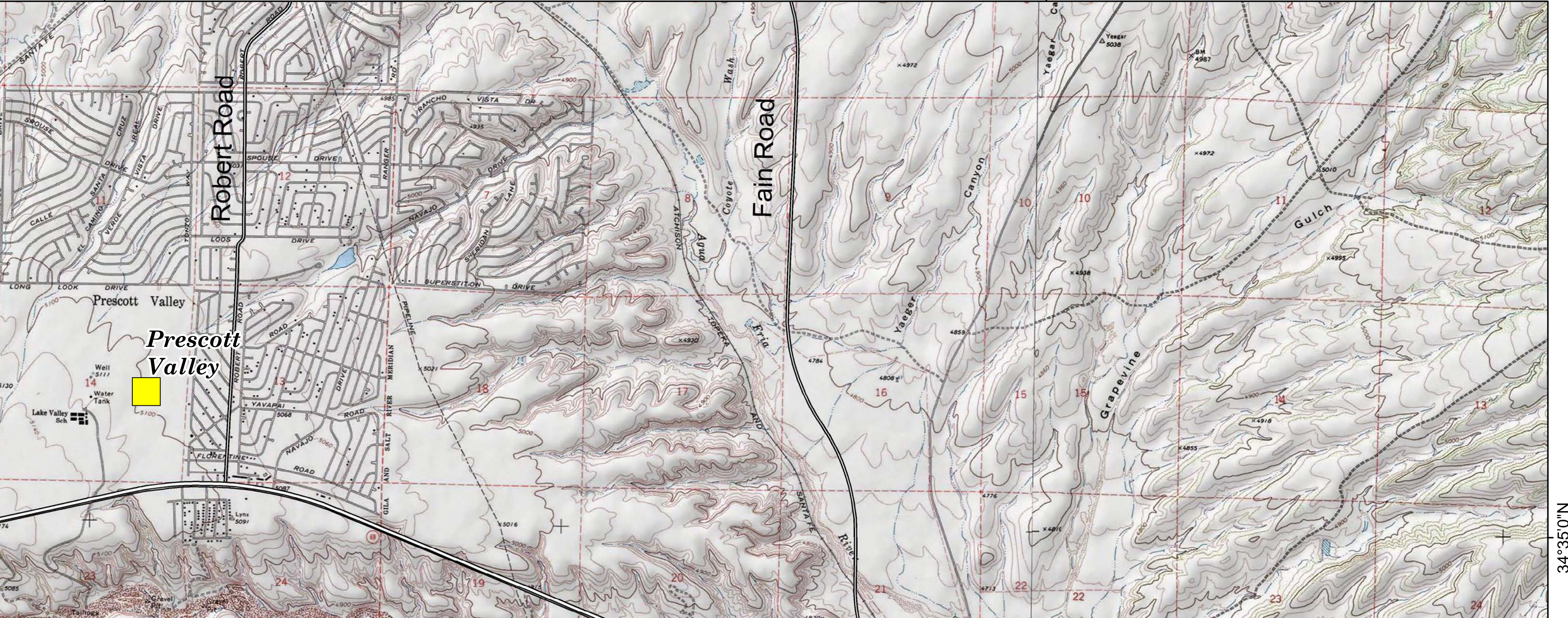
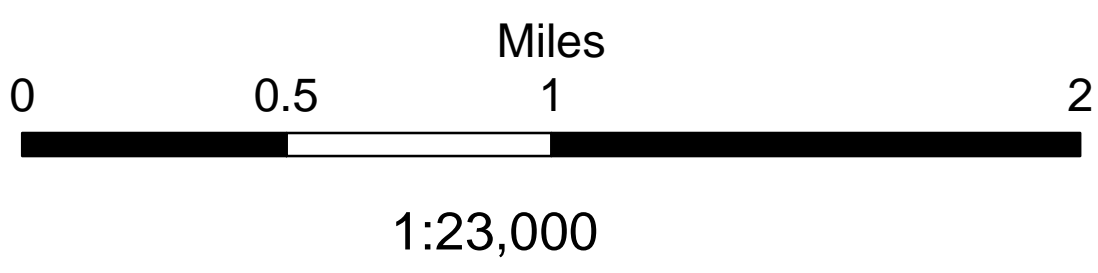


SOUTHWEST AREA TYPE 1
INCIDENT MANAGEMENT TEAM 2
JOHN PIERSON - INCIDENT COMMANDER

GOODWIN FIRE OPERATIONS BREAKOUT AZ-PNF-904 7/3/2017

Map Name: OPQR

27,541 Acres



ANCH I

DIV O

DIV P

DIV Q

DIV R

V D

D

- XXXXX Completed Dozer Line
- Completed Fire Line
- - - Uncontrolled Fire Edge
- Drop Point
- Helispot
- Incident Command Post
- WX Mobile Weather Unit
- Retardant/Mud Pit
- W Water Source
- || Branch
-) Division
- Management Action Points
- ▭ Prescott National Forest Boundary
- ▭ Grapevine Botanical Area
- ▭ Closure Area Boundary
- Local Towns
- ✂ Mine

