

**SOUTHWEST AREA TYPE 1
INCIDENT MANAGEMENT TEAM 2**
JOHN PIERSON - INCIDENT COMMANDER

GOODWIN FIRE

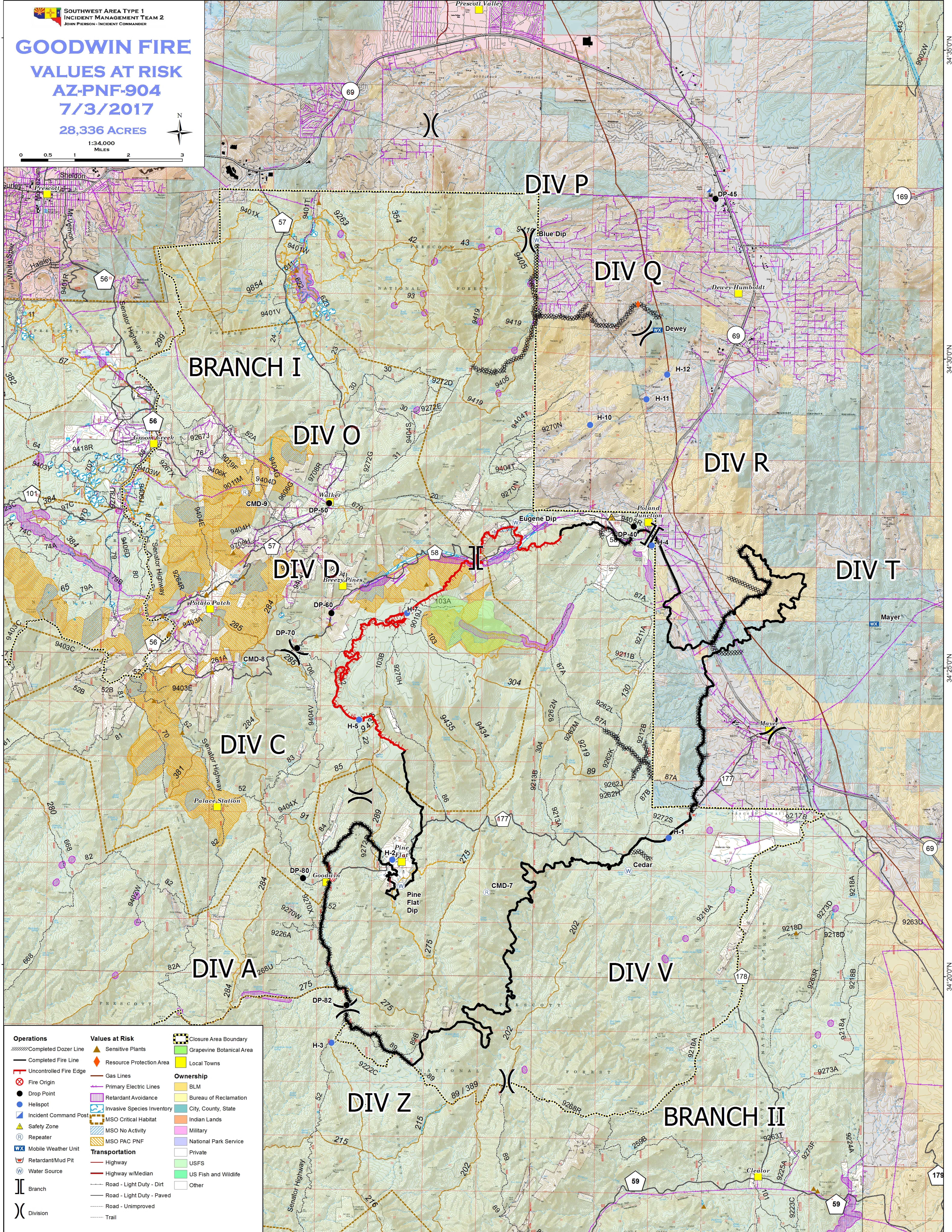
VALUES AT RISK

AZ-PNF-904

7/3/2017

28,336 ACRES

1:34,000
MILES



Operations	Values at Risk	Closure Area Boundary
Completed Dozer Line	Sensitive Plants	Grapevine Botanical Area
Completed Fire Line	Resource Protection Area	Local Towns
Uncontrolled Fire Edge	Gas Lines	Ownership
Fire Origin	Primary Electric Lines	BLM
Drop Point	Retardant Avoidance	Bureau of Reclamation
Helispot	Invasive Species Inventory	City, County, State
Incident Command Post	MSO Critical Habitat	Indian Lands
Safety Zone	MSO No Activity	Military
Repeater	MSO PAC PNF	National Park Service
Mobile Weather Unit	Transportation	Private
Retardant/Mud Pit	Highway	USFS
Water Source	Highway w/Median	US Fish and Wildlife
Branch	Road - Light Duty - Dirt	Other
Division	Road - Light Duty - Paved	
	Road - Unimproved	
	Trail	