



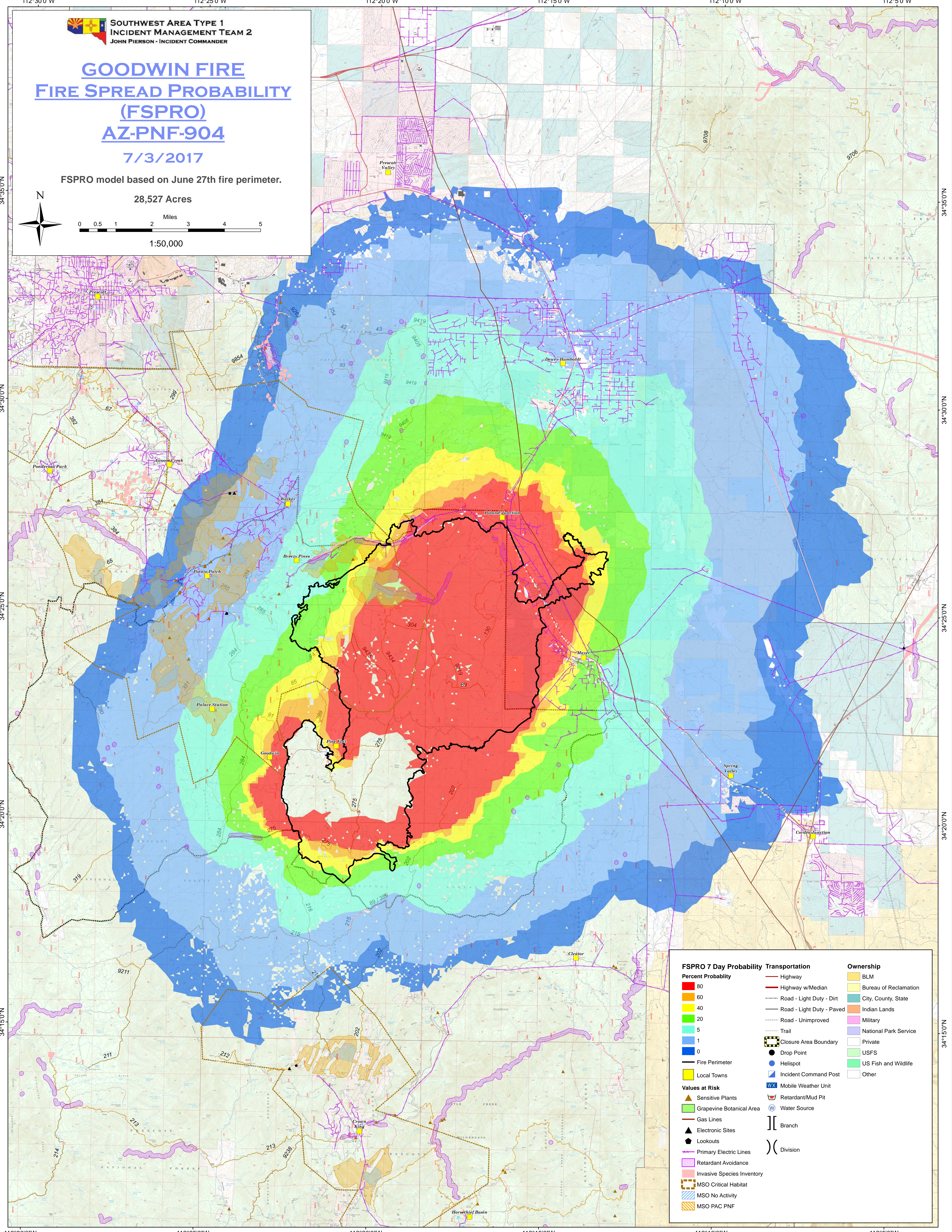
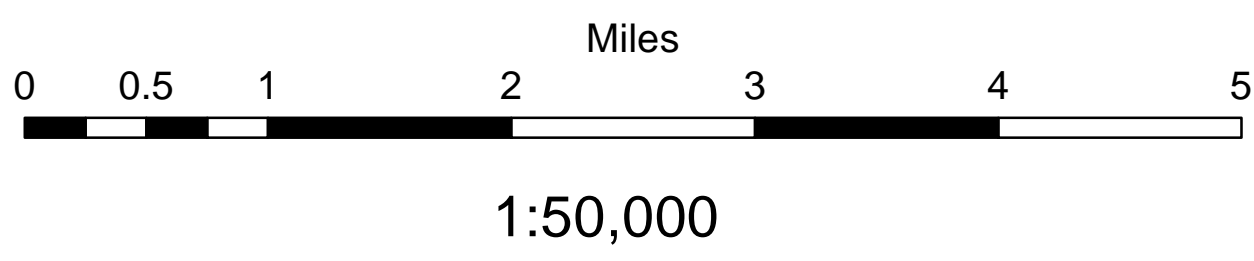
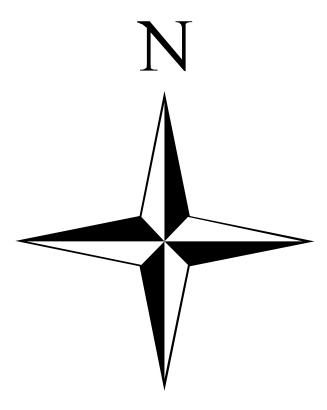
**SOUTHWEST AREA TYPE 1  
INCIDENT MANAGEMENT TEAM 2**  
JOHN PIERSON - INCIDENT COMMANDER

# GOODWIN FIRE FIRE SPREAD PROBABILITY (FSPRO) AZ-PNF-904

7/3/2017

FSPRO model based on June 27th fire perimeter.

28,527 Acres



FSPRO 7 Day Probability		Transportation		Ownership	
80	Highway	BLM			
60	Highway w/Median	Bureau of Reclamation			
40	Road - Light Duty - Dirt	City, County, State			
20	Road - Light Duty - Paved	Indian Lands			
5	Road - Unimproved	Military			
1	Trail	National Park Service			
0	Closure Area Boundary	Private			
Fire Perimeter	Drop Point	USFS			
Local Towns	Helispot	US Fish and Wildlife			
Sensitive Plants	Incident Command Post	Other			
Grapevine Botanical Area	Mobile Weather Unit				
Gas Lines	Retardant/Mud Pit				
Electronic Sites	Water Source				
Primary Electric Lines	Branch				
Retardant Avoidance	Division				
Invasive Species Inventory					
MSO Critical Habitat					
MSO No Activity					
MSO PAC PNF					