

112°25'0"W

112°20'0"W

112°15'0"W

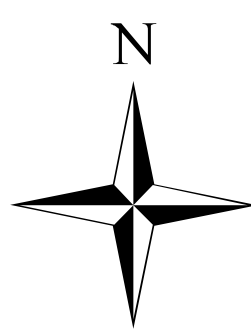
SOUTHWEST AREA TYPE 1
INCIDENT MANAGEMENT TEAM 2
JOHN PIERSON - INCIDENT COMMANDER

GOODWIN FIRE BRIEFING MAP AZ-PNF-904 7/3/2017

28,336 ACRES

Miles

0 1 2 4

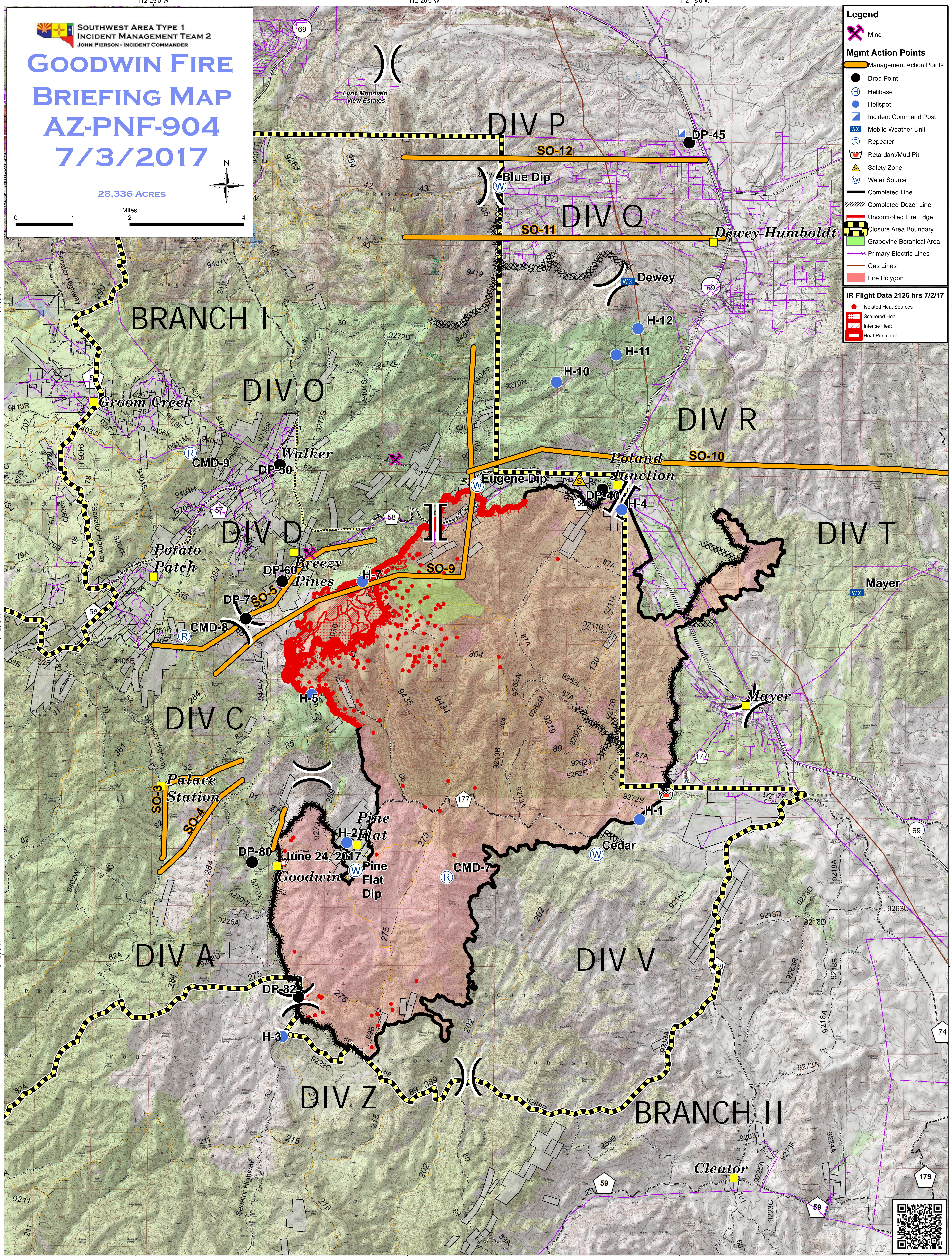


Legend

- Mine
- Mgmt Action Points**
 - Management Action Points
 - Drop Point
 - Helibase
 - Helispot
 - Incident Command Post
 - Mobile Weather Unit
 - Repeater
 - Retardant/Mud Pit
 - Safety Zone
 - Water Source
 - Completed Line
 - Completed Dozer Line
 - Uncontrolled Fire Edge
 - Closure Area Boundary
 - Grapevine Botanical Area
 - Primary Electric Lines
 - Gas Lines
 - Fire Polygon

IR Flight Data 2126 hrs 7/2/17

- Isolated Heat Sources
- Scattered Heat
- Intense Heat
- Heat Perimeter



112°25'0"W

112°20'0"W

112°15'0"W

