

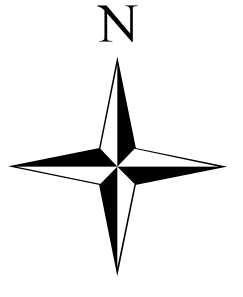
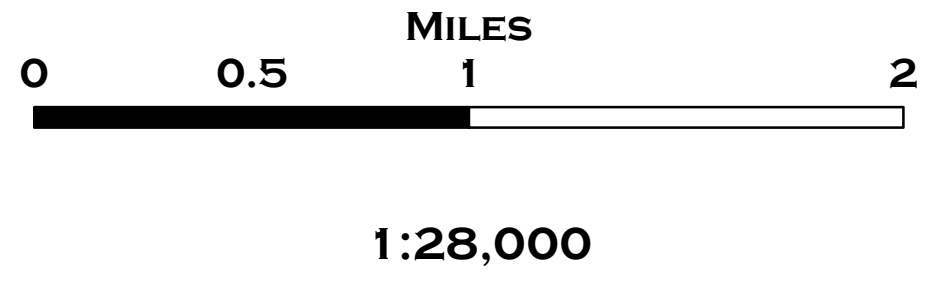
112°25'0"W 112°20'0"W 112°15'0"W



SOUTHWEST AREA TYPE 1
INCIDENT MANAGEMENT TEAM 2
JOHN PIERSON - INCIDENT COMMANDER

GOODWIN FIRE AERIAL AVOIDANCE & READ MAP AZ-PNF-904 7/3/2017

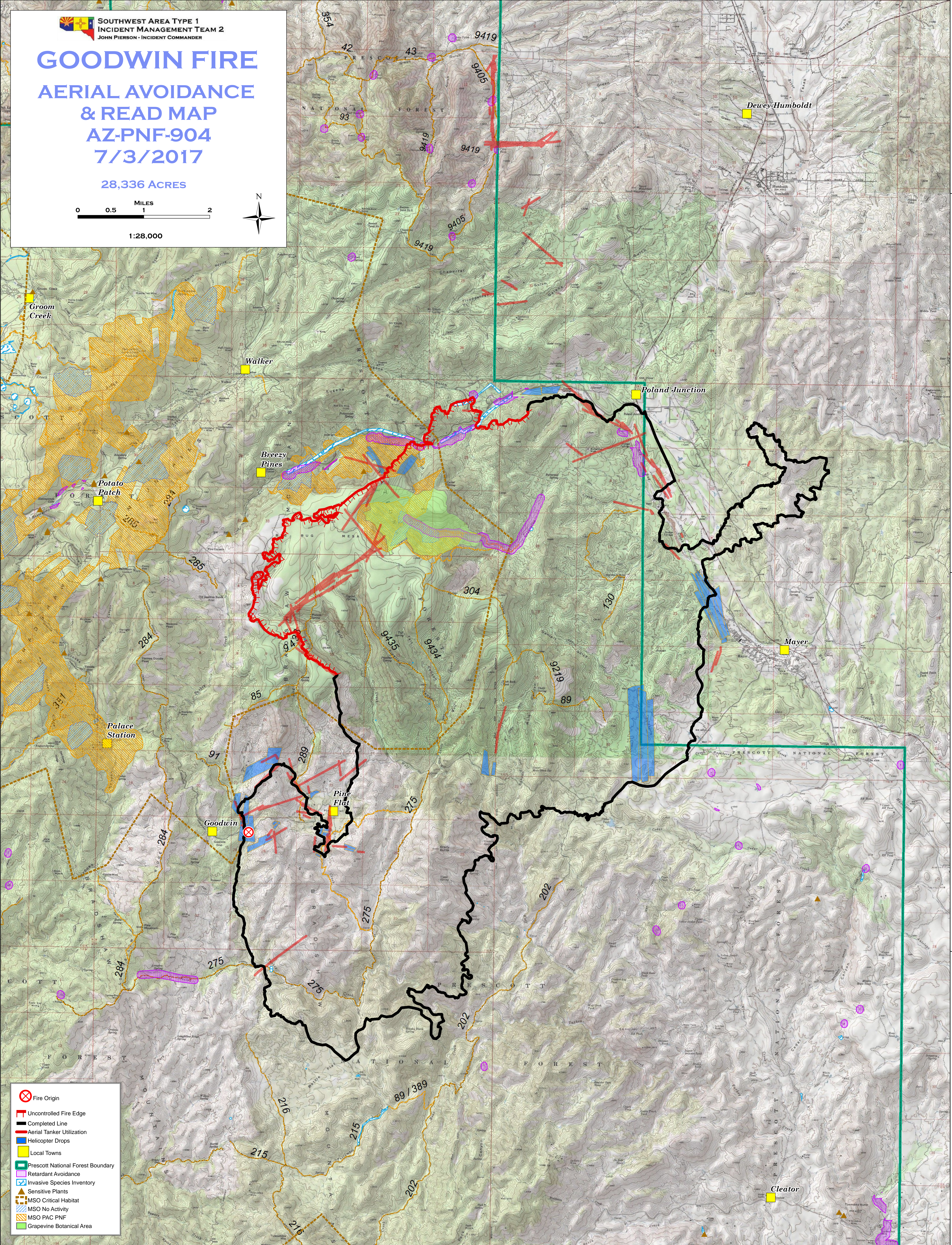
28,336 ACRES



34°30'0"N

34°25'0"N

34°20'0"N



- Fire Origin
- Uncontrolled Fire Edge
- Completed Line
- Aerial Tanker Utilization
- Helicopter Drops
- Local Towns
- Prescott National Forest Boundary
- Retardant Avoidance
- Invasive Species Inventory
- Sensitive Plants
- MSO Critical Habitat
- MSO No Activity
- MSO PAC PNF
- Grapevine Botanical Area

112°25'0"W 112°20'0"W 112°15'0"W