

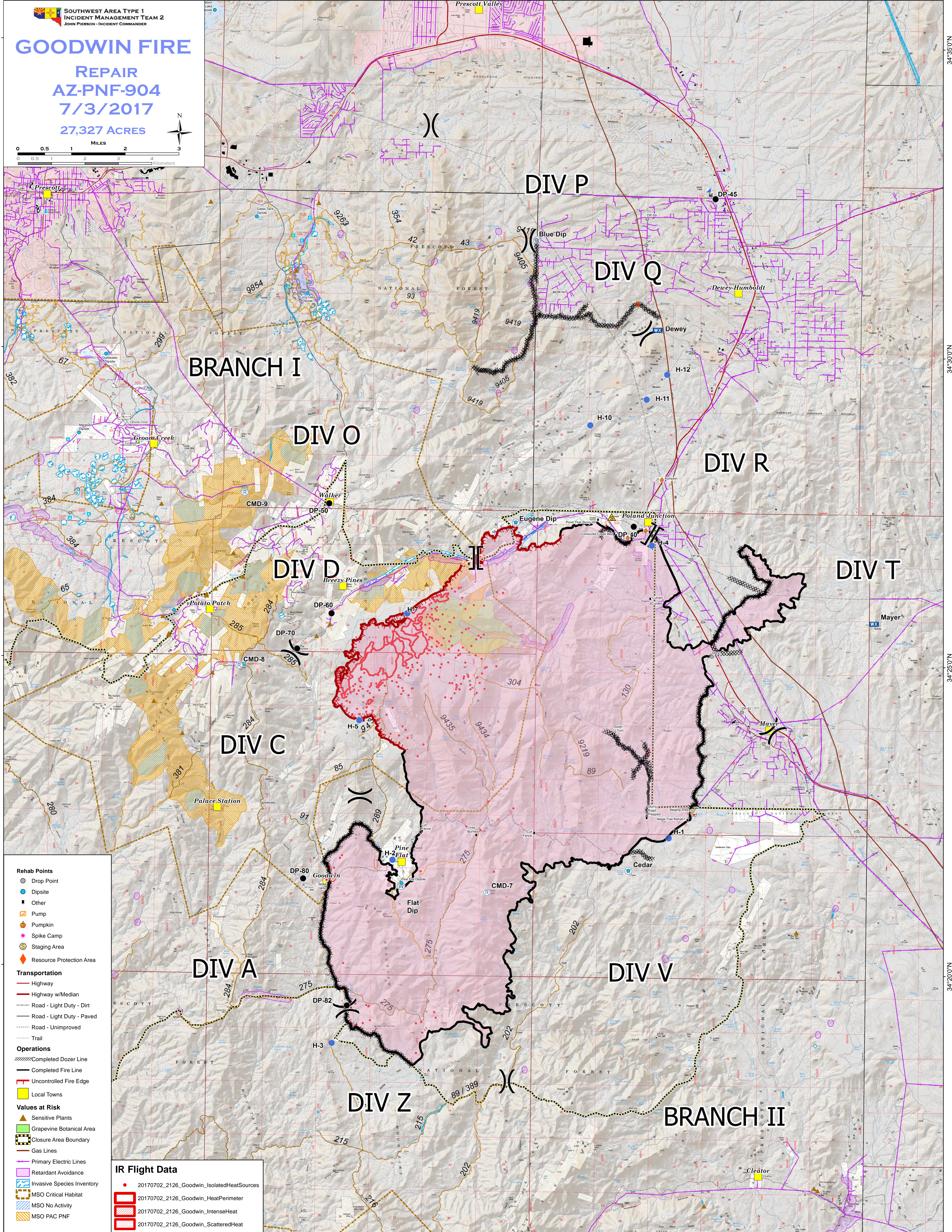
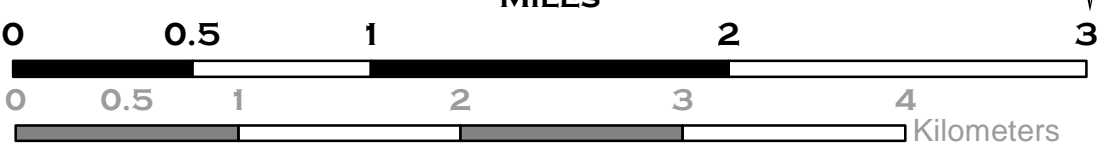
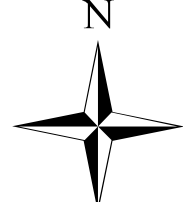
# GOODWIN FIRE

## REPAIR

### AZ-PNF-904

### 7/3/2017

### 27,327 ACRES



- Rehab Points**
  - Drop Point
  - Dipsite
  - Other
  - Pump
  - Pumpkin
  - Spike Camp
  - Staging Area
  - Resource Protection Area
- Transportation**
  - Highway
  - Highway w/Median
  - Road - Light Duty - Dirt
  - Road - Light Duty - Paved
  - Road - Unimproved
  - Trail
- Operations**
  - Completed Dozer Line
  - Completed Fire Line
  - Uncontrolled Fire Edge
  - Local Towns
- Values at Risk**
  - Sensitive Plants
  - Grapevine Botanical Area
  - Closure Area Boundary
  - Gas Lines
  - Primary Electric Lines
  - Retardant Avoidance
  - Invasive Species Inventory
  - MSO Critical Habitat
  - MSO No Activity
  - MSO PAC PNF
- IR Flight Data**
  - 20170702\_2126\_Goodwin\_IsolatedHeatSources
  - 20170702\_2126\_Goodwin\_HeatPerimeter
  - 20170702\_2126\_Goodwin\_IntenseHeat
  - 20170702\_2126\_Goodwin\_ScatteredHeat