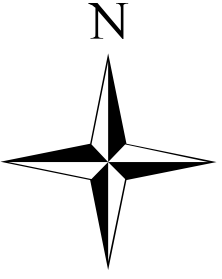
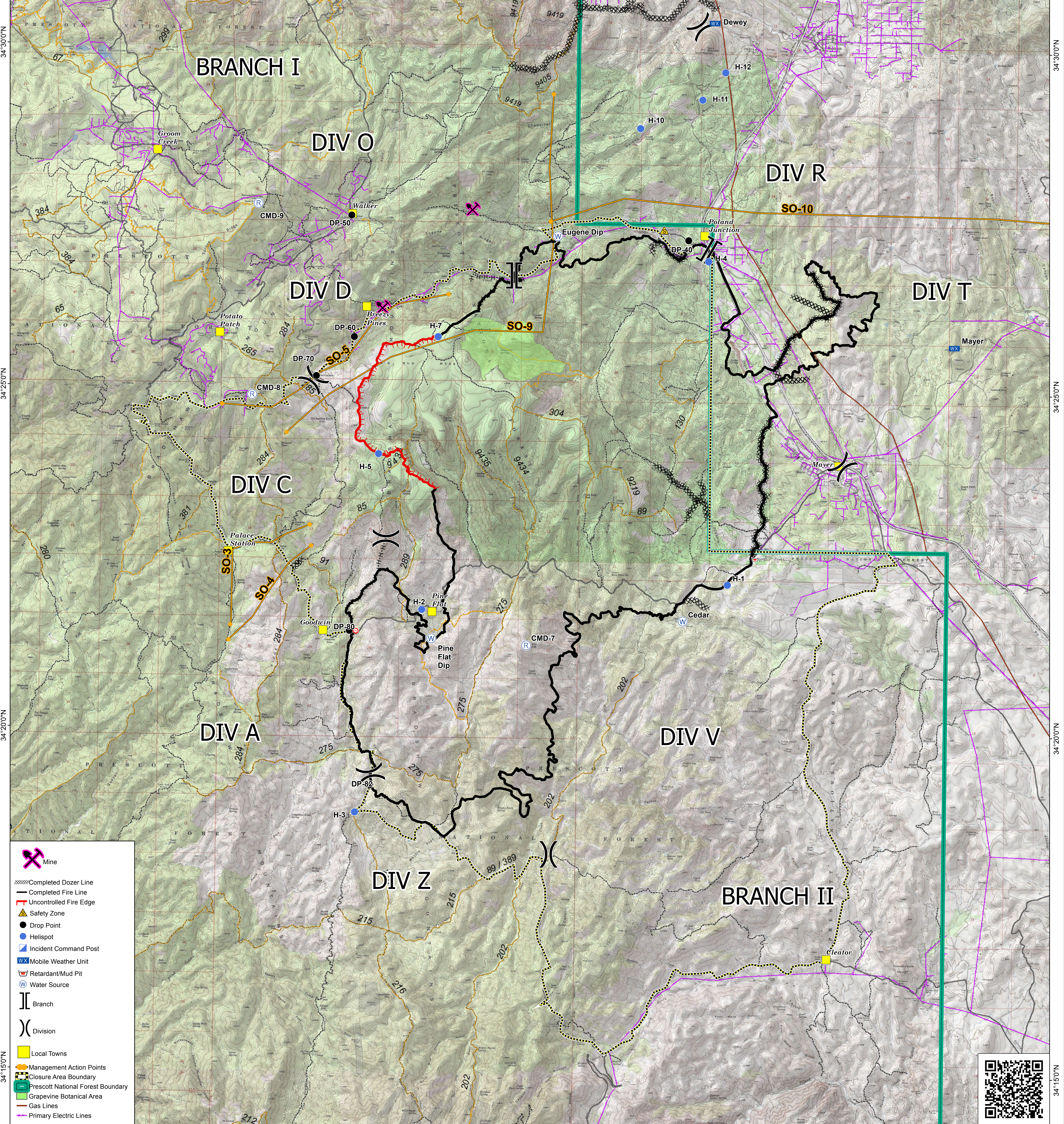
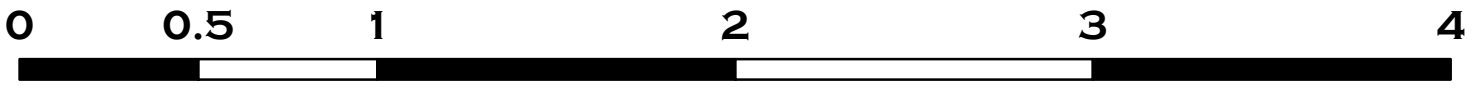


GOODWIN FIRE OPERATIONS MAP AZ-PNF-904 7/4/2017 28,516 ACRES



1:34,000

MILES



- Mine
- Completed Dozer Line
- Completed Fire Line
- Uncontrolled Fire Edge
- Safety Zone
- Drop Point
- Helispot
- Incident Command Post
- Mobile Weather Unit
- Retardant/Mud Pit
- Water Source
- Branch
- Division
- Local Towns
- Management Action Points
- Closure Area Boundary
- Prescott National Forest Boundary
- Grapevine Botanical Area
- Gas Lines
- Primary Electric Lines

