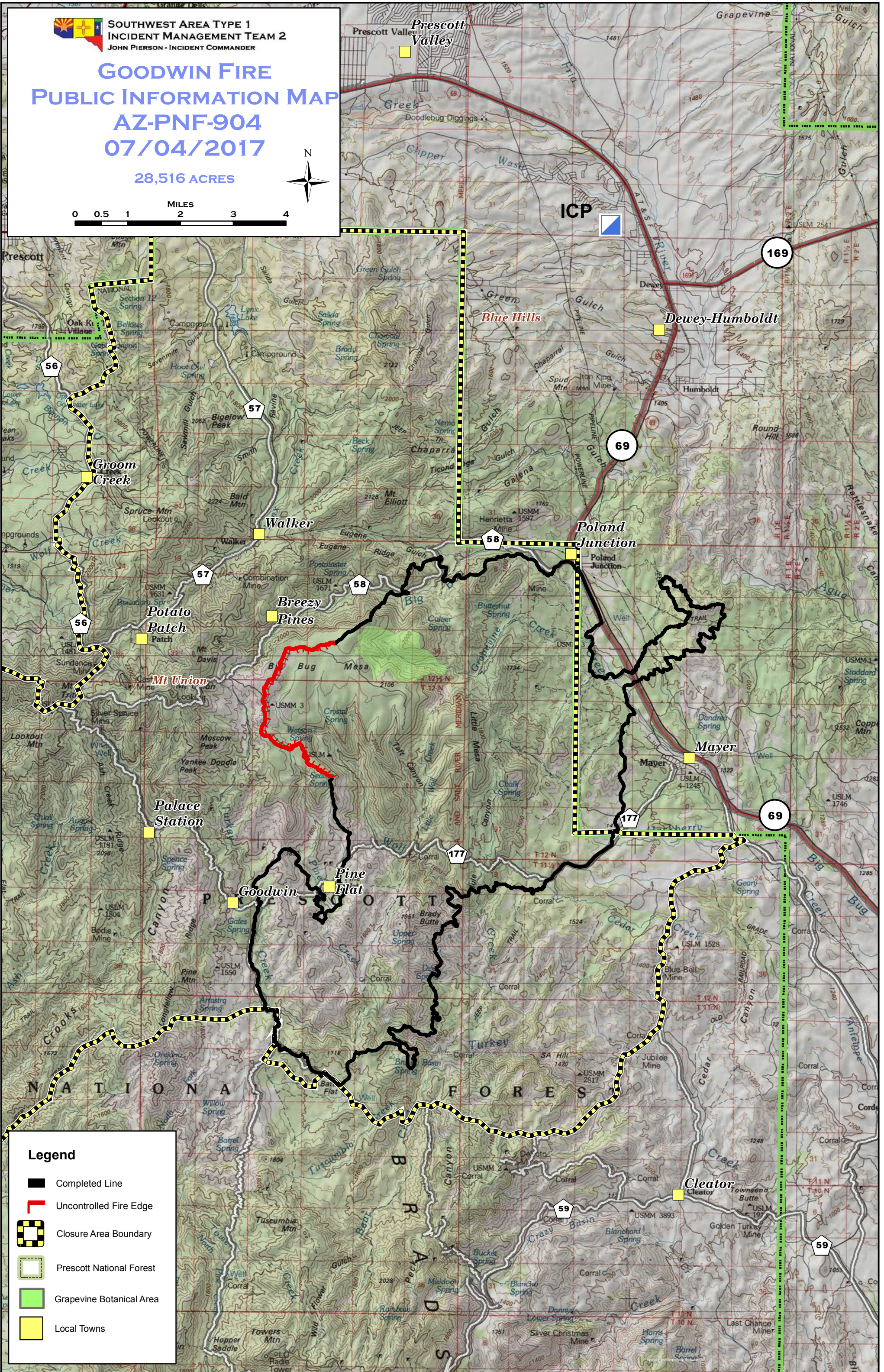
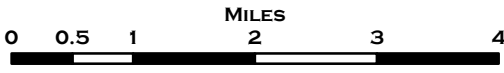




**SOUTHWEST AREA TYPE 1
INCIDENT MANAGEMENT TEAM 2**
JOHN PIERSON - INCIDENT COMMANDER

GOODWIN FIRE PUBLIC INFORMATION MAP AZ-PNF-904 07/04/2017

28,516 ACRES



Legend

- Completed Line
- Uncontrolled Fire Edge
- Closure Area Boundary
- Prescott National Forest
- Grapevine Botanical Area
- Local Towns