

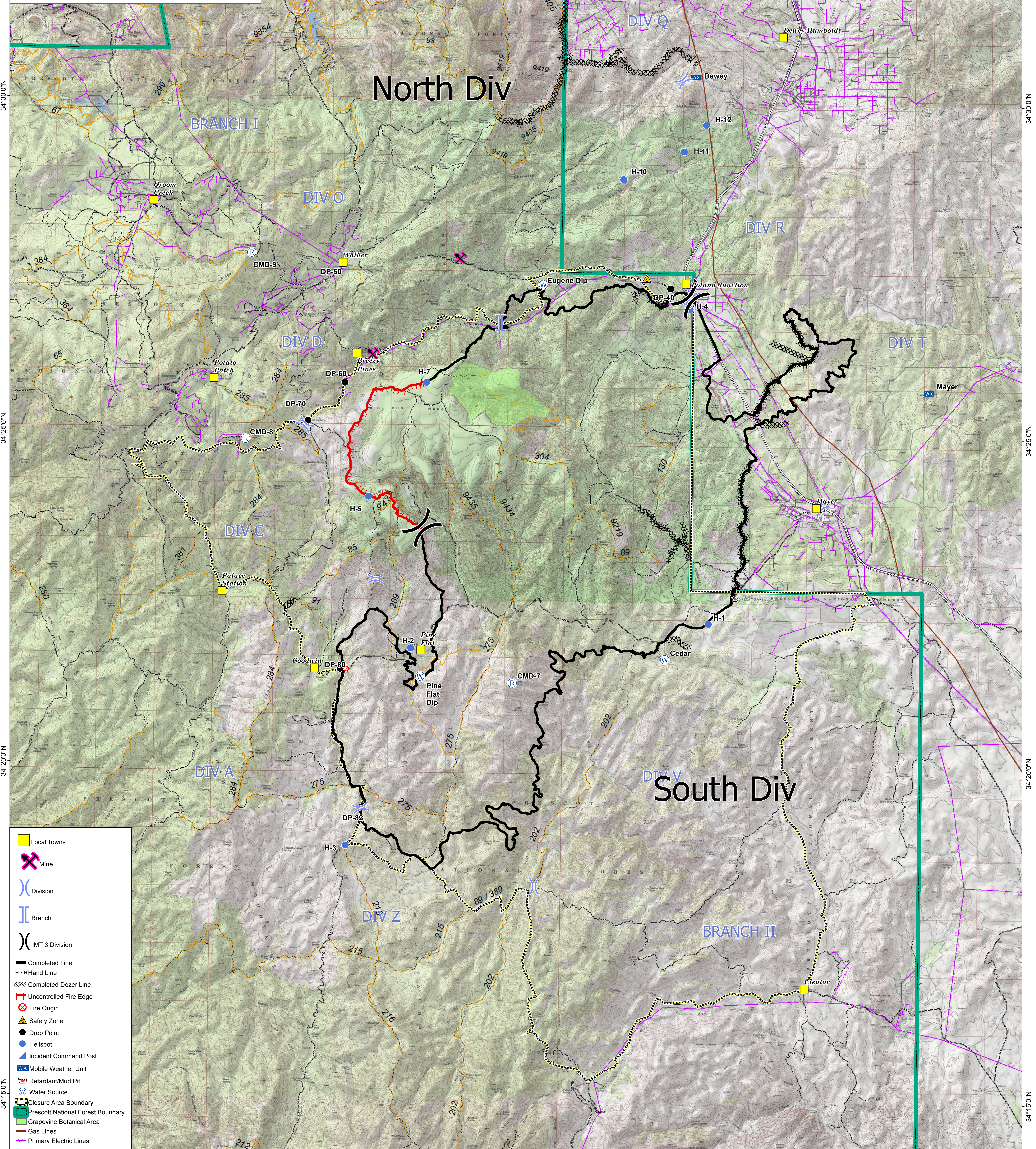
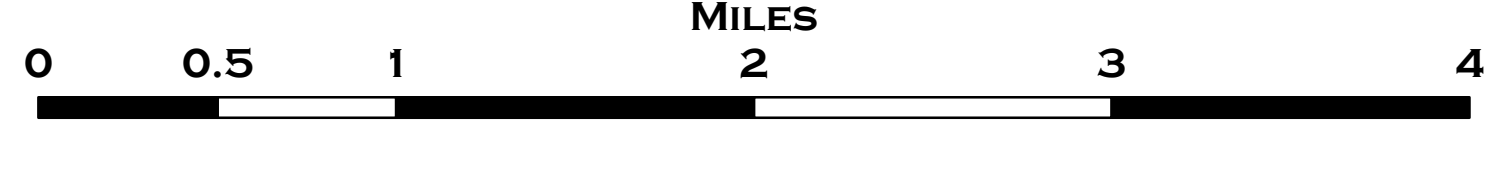
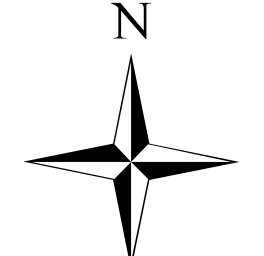
GOODWIN FIRE OPERATIONS MAP

AZ-PNF-904

7/6/2017

28,516 ACRES

1:34,000
MILES



- Local Towns
- Mine
- Division
- Branch
- IMT 3 Division
- Completed Line
- H-Hand Line
- Completed Dozer Line
- Uncontrolled Fire Edge
- Fire Origin
- Safety Zone
- Drop Point
- Helispot
- Incident Command Post
- Mobile Weather Unit
- Retardant/Mud Pit
- Water Source
- Closure Area Boundary
- Prescott National Forest Boundary
- Grapevine Botanical Area
- Gas Lines
- Primary Electric Lines