



SOUTHWEST AREA TYPE 1
INCIDENT MANAGEMENT TEAM 2
JOHN PIERSON - INCIDENT COMMANDER

GOODWIN FIRE

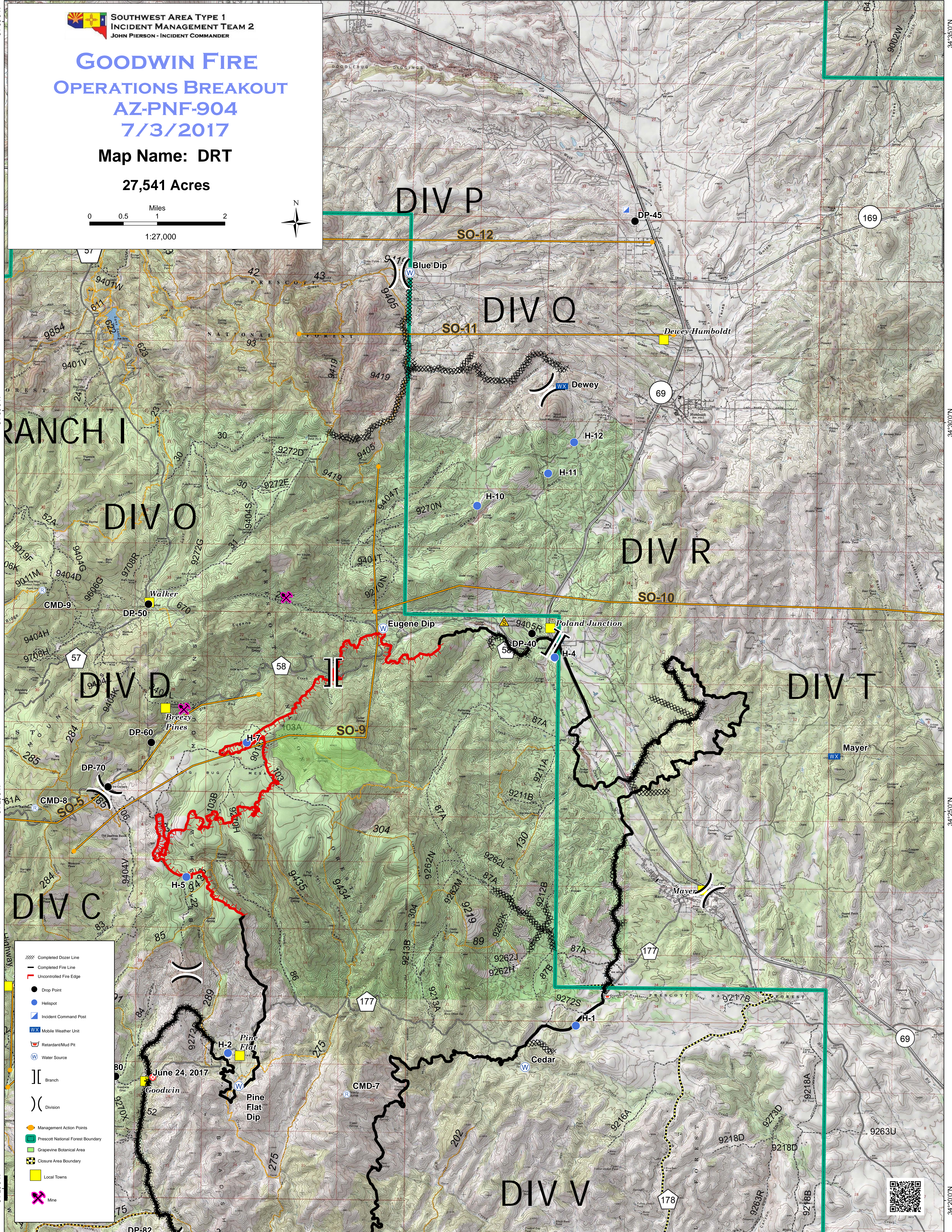
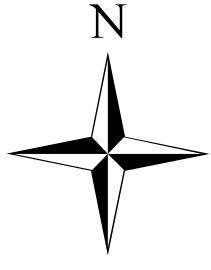
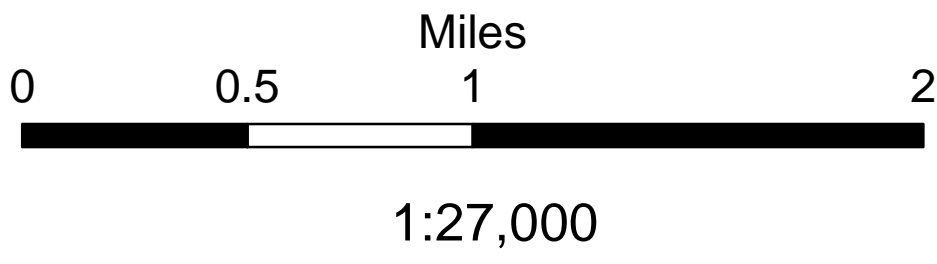
OPERATIONS BREAKOUT

AZ-PNF-904

7/3/2017

Map Name: DRT

27,541 Acres



- XXXX Completed Dozer Line
- Completed Fire Line
- Uncontrolled Fire Edge
- Drop Point
- Helispot
- Incident Command Post
- WX Mobile Weather Unit
- Retardant/Mud Pit
- W Water Source
- [[Branch
-) Division
- Management Action Points
- ▭ Prescott National Forest Boundary
- ▭ Grapevine Botanical Area
- ▭ Closure Area Boundary
- ▭ Local Towns
- ✂ Mine



BRANCH I

DIV O

DIV P

DIV Q

DIV R

DIV D

DIV T

DIV C

DIV V

June 24, 2017

Goodwin

Pine Flat

Pine Flat Dip

Eugene Dip

Poland Junction

Walker

Dewey-Humboldt

Dewey

Mayer

Mayer

Cedar

CMD-7

DP-82

SO-12

SO-11

SO-10

SO-9

57

58

177

177

178

169

69

69

34°35'0"N
34°30'0"N
34°25'0"N
34°20'0"N

112°20'0"W

112°15'0"W

112°20'0"W

112°15'0"W

34°35'0"N
34°30'0"N
34°25'0"N
34°20'0"N