

112°25'0"W

112°20'0"W

112°15'0"W

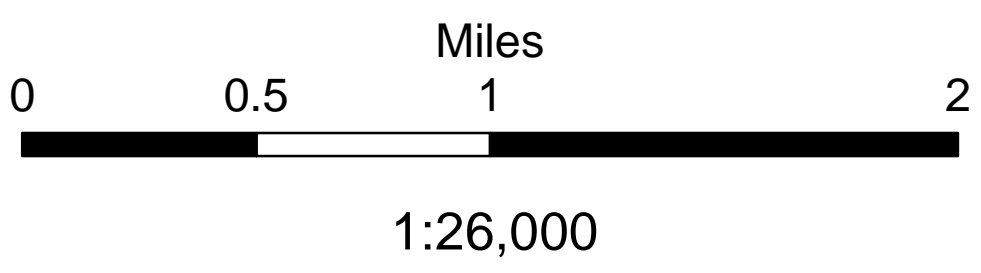


SOUTHWEST AREA TYPE 1
INCIDENT MANAGEMENT TEAM 2
JOHN PIERSON - INCIDENT COMMANDER

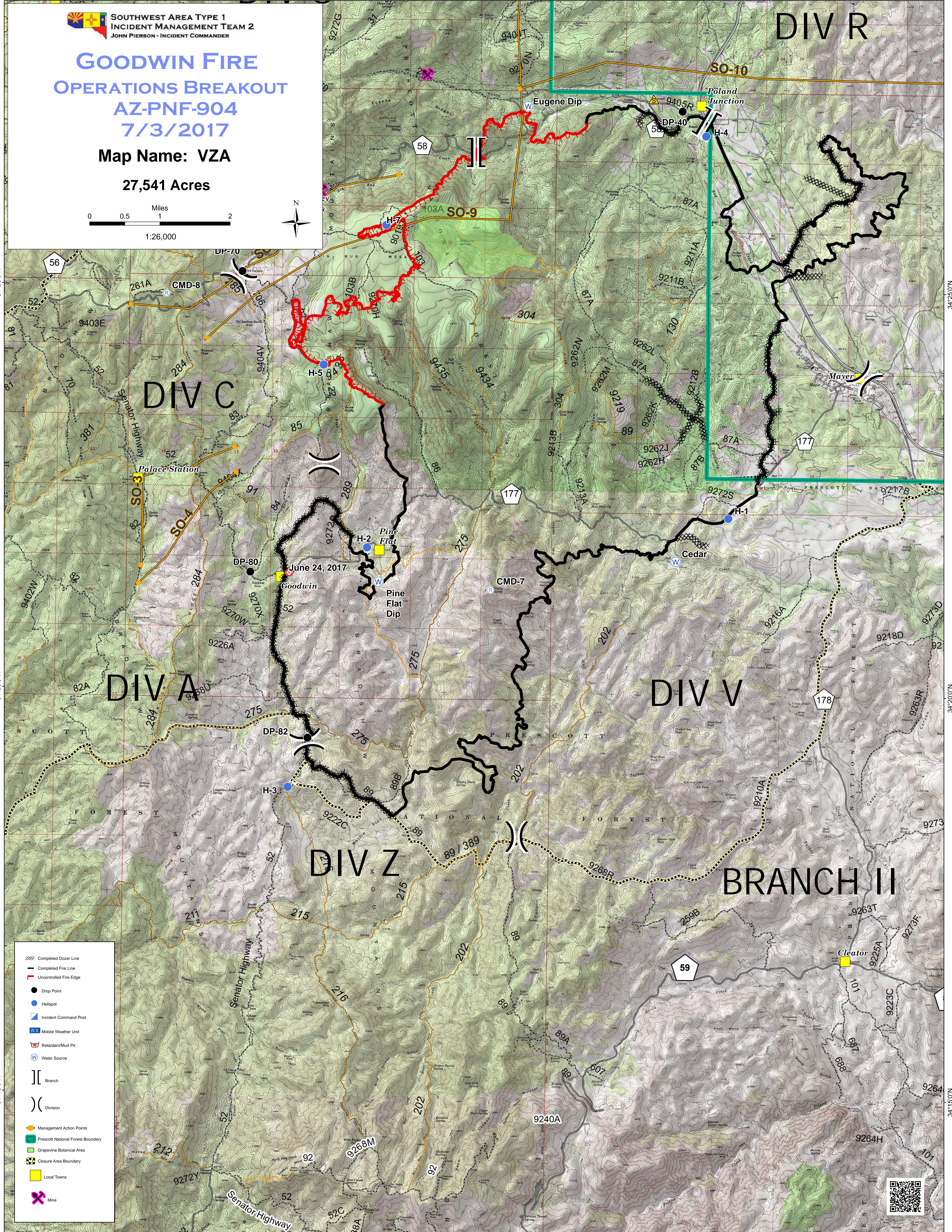
GOODWIN FIRE OPERATIONS BREAKOUT AZ-PNF-904 7/3/2017

Map Name: VZA

27,541 Acres



DIV R



34°25'0"N

34°25'0"N

34°20'0"N

34°20'0"N

34°15'0"N

34°15'0"N

112°25'0"W

112°20'0"W

112°15'0"W

- XXXX Completed Dozer Line
- Completed Fire Line
- Uncontrolled Fire Edge
- Drop Point
- Helispot
- Incident Command Post
- W Mobile Weather Unit
- Retardant/Mud Pit
- W Water Source
-]] Branch
-) Division
- Management Action Points
- ▭ Prescott National Forest Boundary
- ▭ Grapevine Botanical Area
- ▭ Closure Area Boundary
- Local Towns
- ✂ Mine

