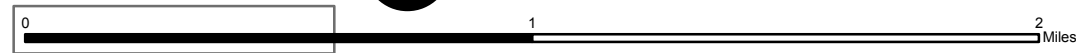
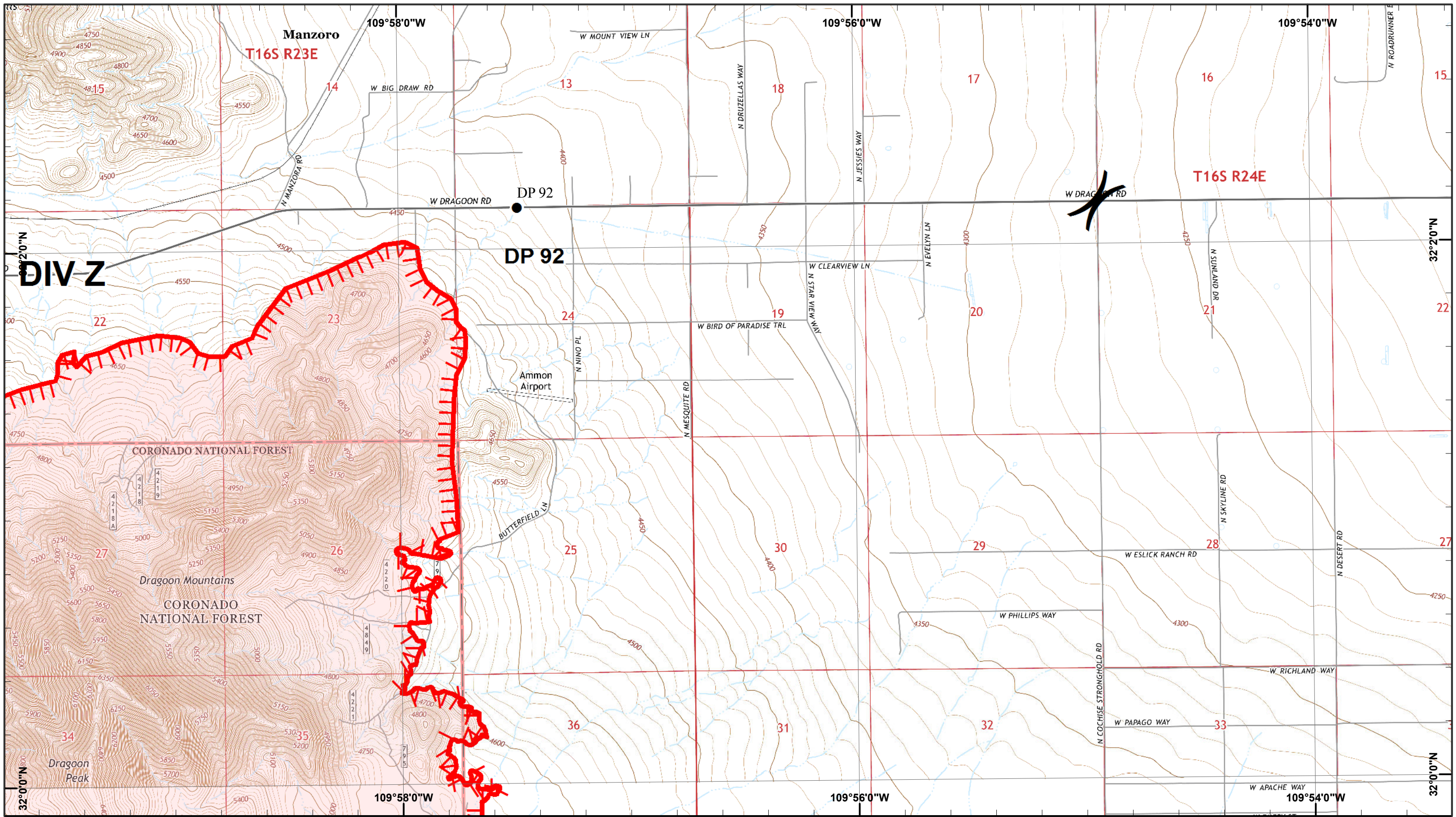


**Lizard Incident IAP Map**

GIS Acres 15,088  
6/10/2017 21:41

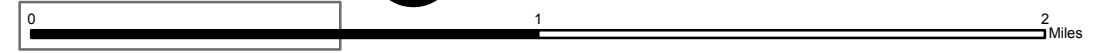


- Drop Point
- Fire Perimeter
- Helibase
- Completed Line
- Uncontrolled Fire Edge

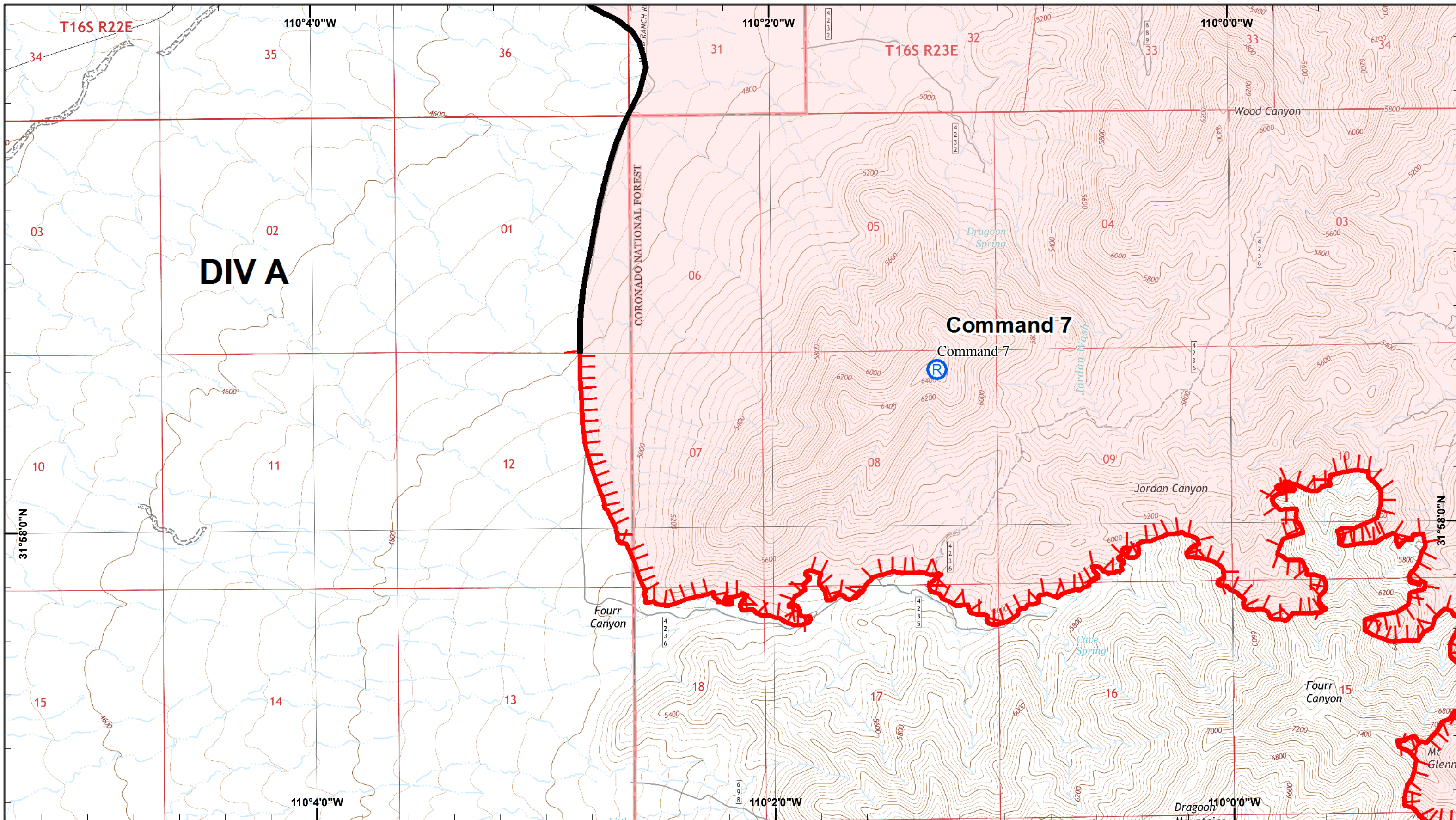


**Lizard Incident IAP Map**

GIS Acres 15,088  
6/10/2017 21:41

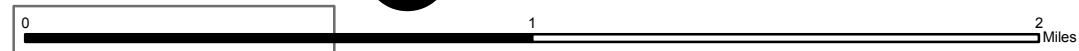


- Drop Point
- ▬ Uncontrolled Fire Edge
- ▬ Fire Perimeter

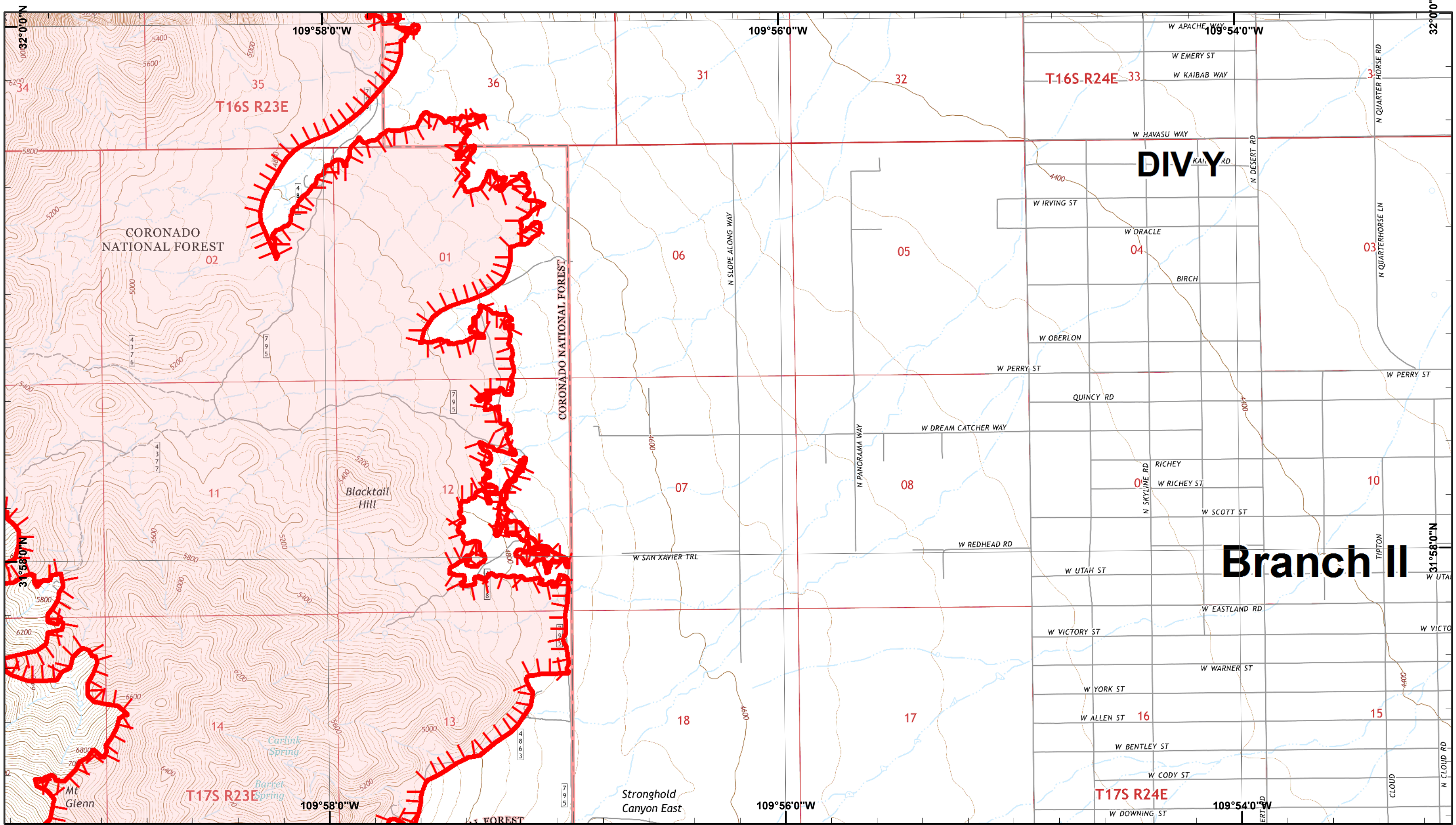




**Lizard Incident IAP Map**

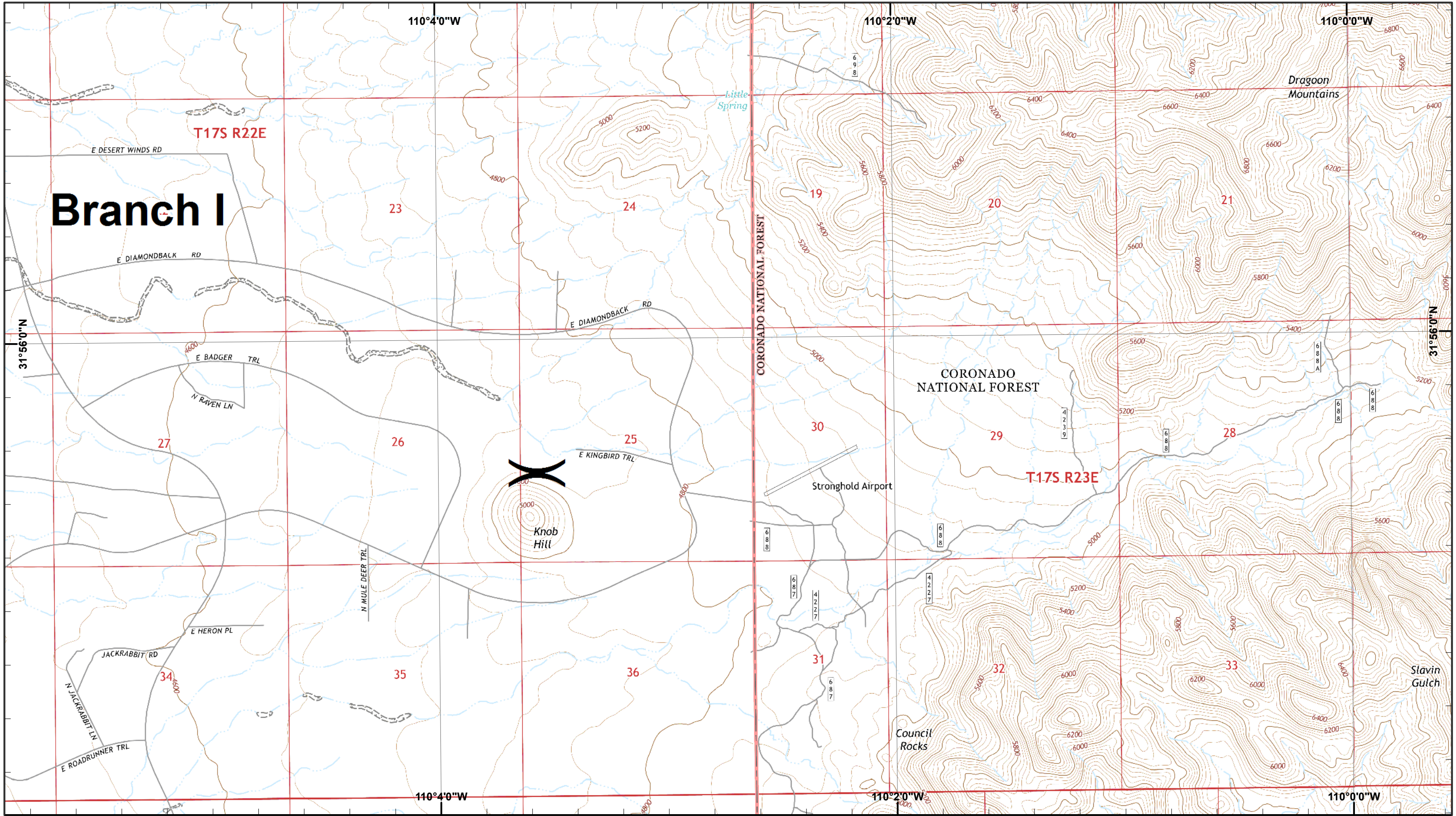
GIS Acres 15,088  
6/10/2017 21:41



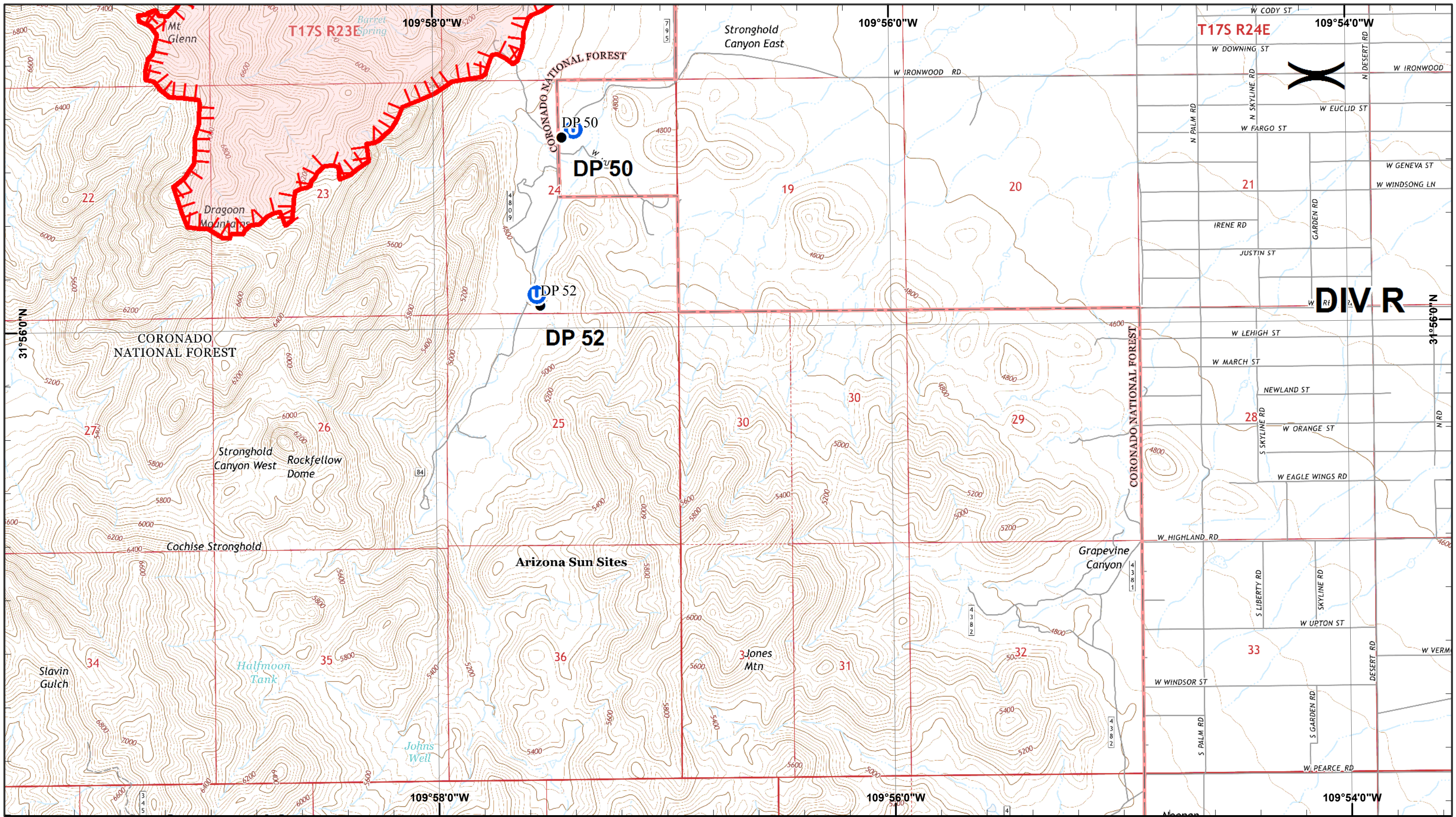
- Repeater
- Completed Line
- Uncontrolled Fire Edge
- Fire Perimeter



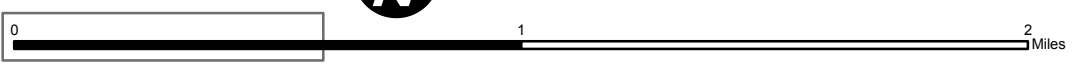
 Uncontrolled Fire Edge  
 Fire Perimeter



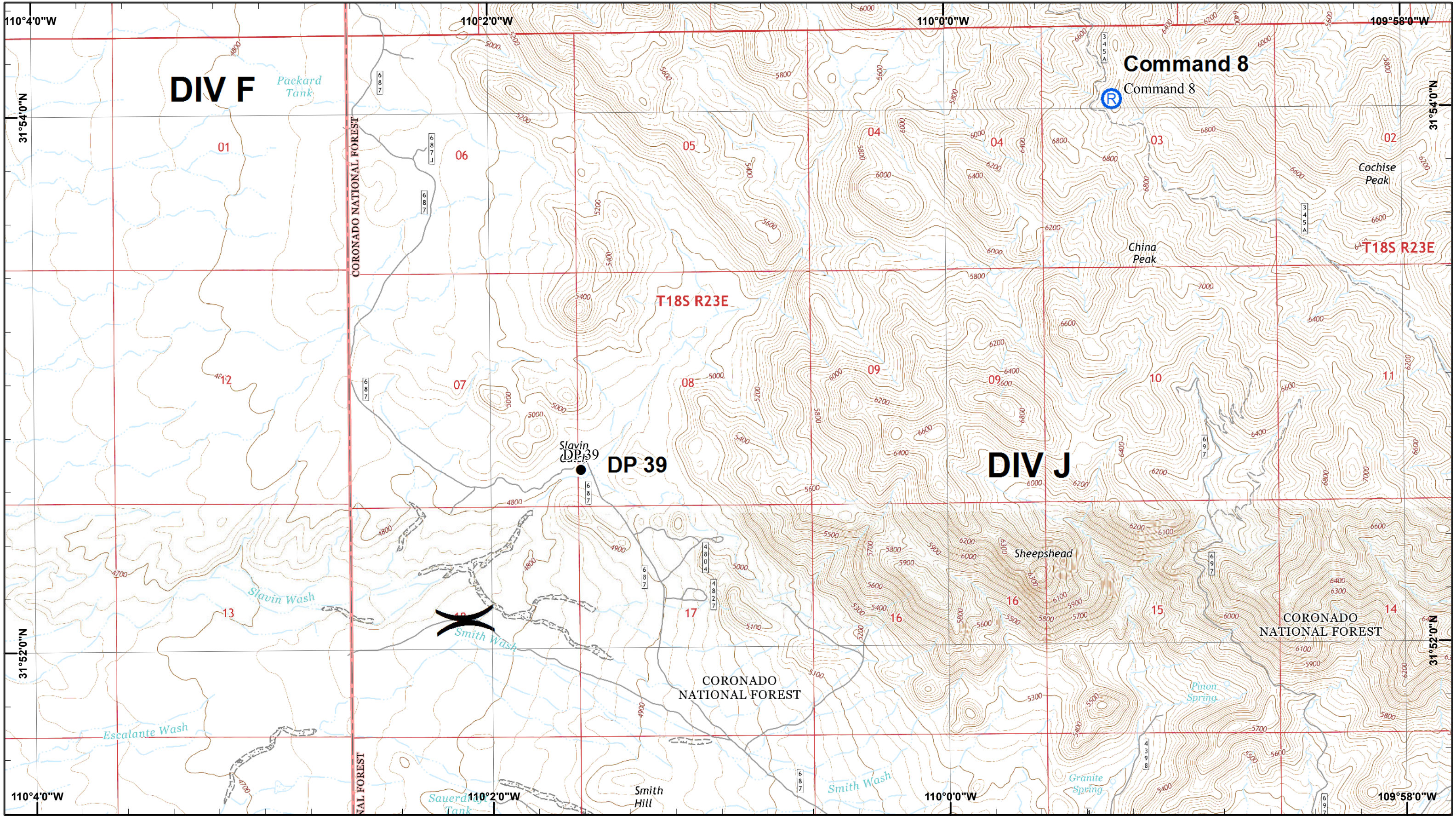
# Branch I



GIS Acres 15,088  
 6/10/2017 21:41

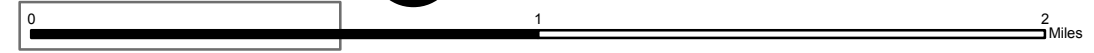


- Drop Point
- Unimproved Landing Area
- Uncontrolled Fire Edge
- Fire Perimeter

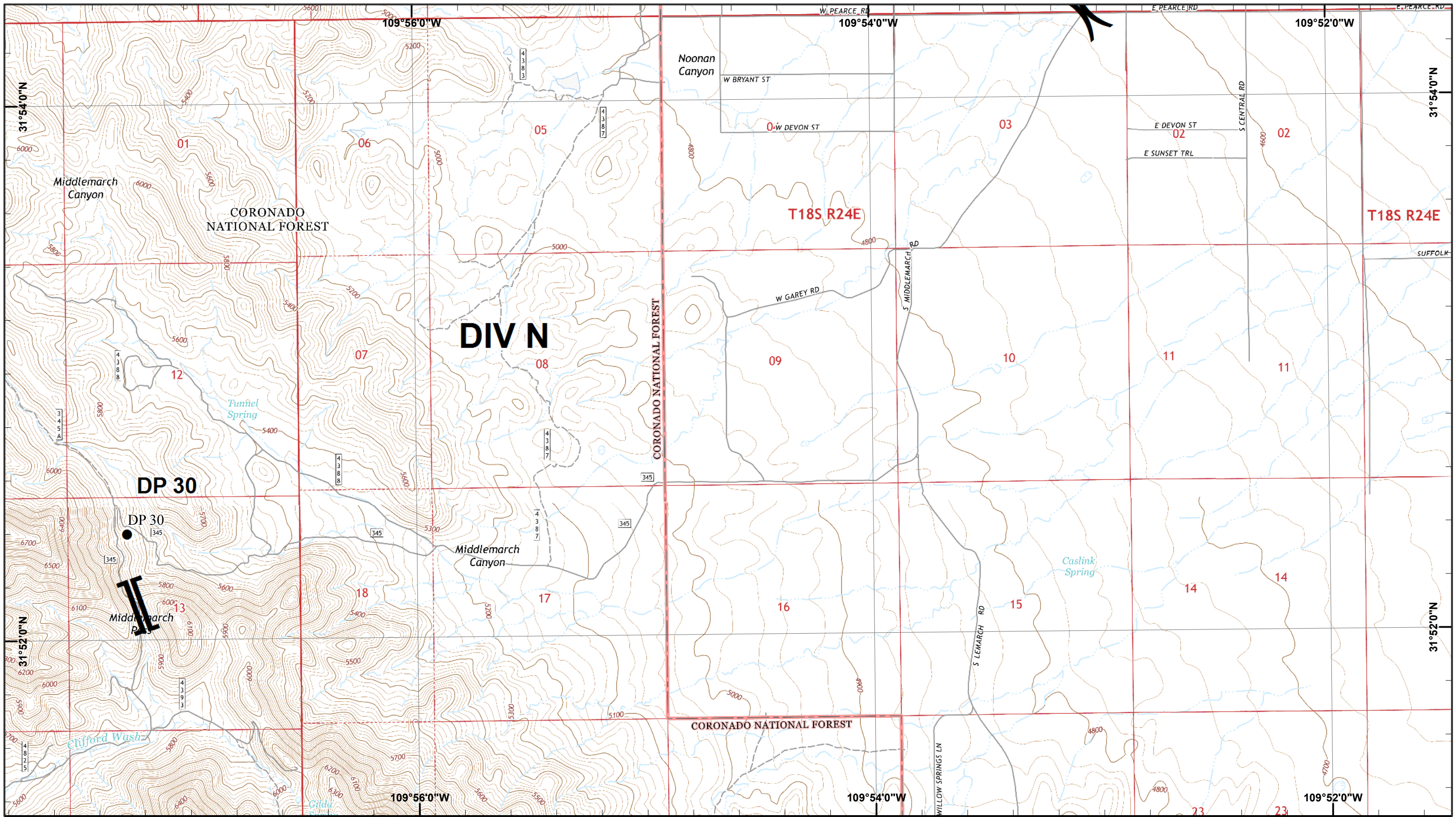


**Lizard Incident IAP Map**

GIS Acres 15,088  
6/10/2017 21:41



- Drop Point
- Ⓡ Repeater



**Lizard Incident IAP Map**

GIS Acres 15,088  
6/10/2017 21:41



Day Operational Period 6/12/2017 Map Created 6/11/2017 10:03:48 PM M. Hill

● Drop Point