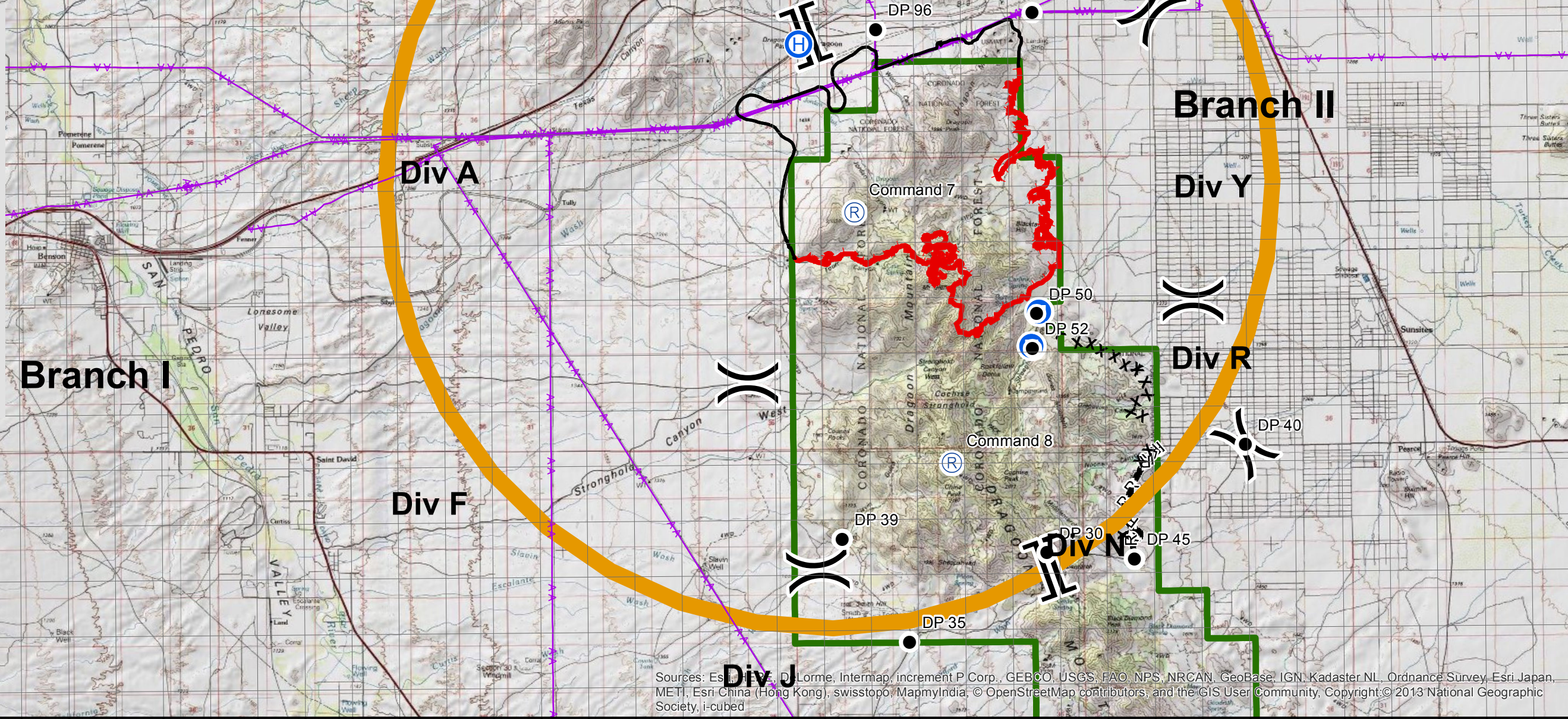


Feature	Label	Long (DDM)	Lat (DDM)
Unimproved Landing Area		-109° 57.40477	31° 56.779128
Unimproved Landing Area		-109° 57.40477	31° 56.779128
Helibase	Lizard	-109° 57.40477	31° 56.779128
Repeater	Command 8	-109° 59.284522	31° 54.058056
Repeater	Command 7	-110° 1.236571	31° 58.58018
Drop Point	DP - 30	-109° 57.227826	31° 52.399629
Drop Point	DP - 35	-110° 0.149673	31° 50.813516
Drop Point	DP - 39	-110° 1.675878	31° 52.724662
Drop Point	DP - 40	-109° 53.016827	31° 54.359674
Drop Point	DP - 45	-109° 55.380652	31° 52.287631
Drop Point	DP - 50	-109° 57.44252	31° 56.779438
Drop Point	DP - 52	-109° 57.525281	31° 56.13629
Drop Point	DP - 92	-109° 57.533189	32° 2.123907
Drop Point	DP - 96	-110° 0.861235	32° 1.892977
ICP		-109° 50.578474	32° 15.368404

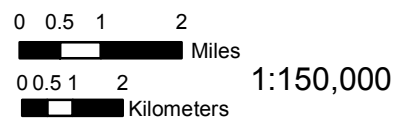
- Fire Point**  
**Feature Category (Point Type)**
- Drop Point
  - Ⓜ Helibase
  - Ⓢ Unimproved Landing Area
  - Ⓜ Incident Command Post
- Fire Line**  
**Feature Category (Line Type)**
- Transmission Line
  - TFR
  - Uncontrolled Fire Edge
  - Completed Line
- R — Road as Completed Line
- X X Completed Dozer Line
- ▭ Coronado National Forest



Sources: Esri, DeLorme, Intermap, increment P Corp., GEBCO, USGS, FAO, NPS, NRCAN, GeoBase, IGN, Kadaster NL, Ordnance Survey, Esri Japan, METI, Esri China (Hong Kong), swisstopo, MapmyIndia, © OpenStreetMap contributors, and the GIS User Community, Copyright © 2013 National Geographic Society, i-cubed

**Lizard Air Ops**  
**AZ-CNF-000464**

GIS Acres 15,131  
 6/11/2017 2311  
 Day Operational Period 6/13/2017



Map Created: 6/12/2017, 8:42:06 PM, By M. Hill

**NAD 1983 UTM Zone 12N**



**SOUTHWEST AREA TYPE 1**  
**INCIDENT MANAGEMENT TEAM 2**  
 JOHN PIERSON - INCIDENT COMMANDER