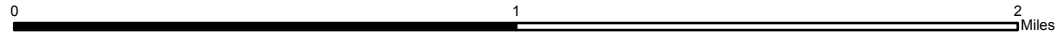


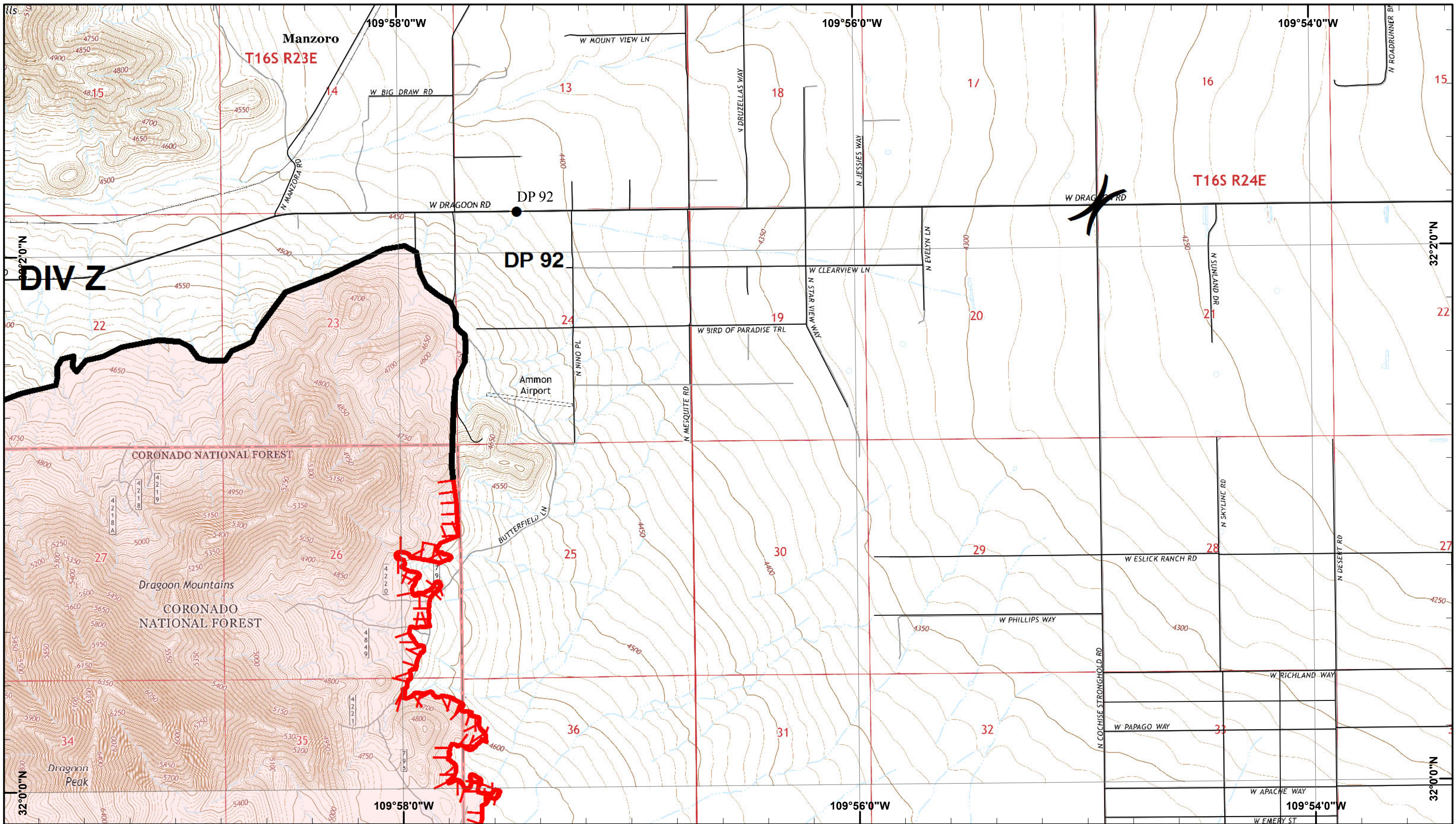
Lizard Incident IAP Map

GIS Acres 15,088
6/10/2017 21:41



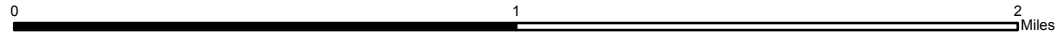
Day Operational Period 6/13/2017 Map Created 6/12/2017 9:01:13 PM

- Roads
- Drop Point
- Ⓜ Helibase
- Completed Line
- Fire Perimeter
-) (Division
-] [Branch



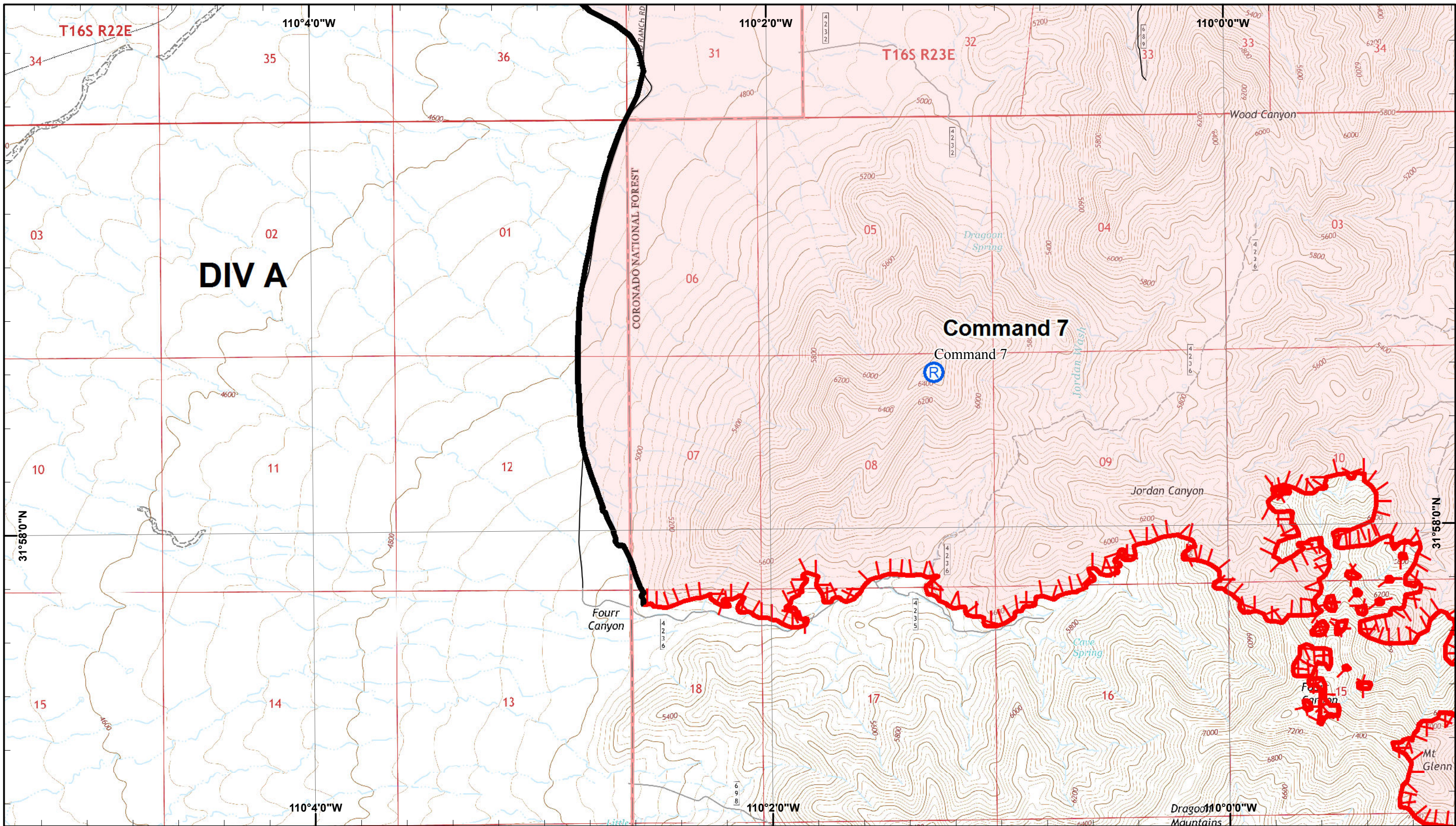
Lizard Incident IAP Map

GIS Acres 15,088
6/10/2017 21:41



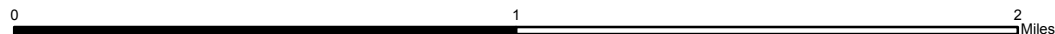
- Roads
- Drop Point
- Completed Line
- Uncontrolled Fire Edge
- Fire Perimeter

- Division
- Branch



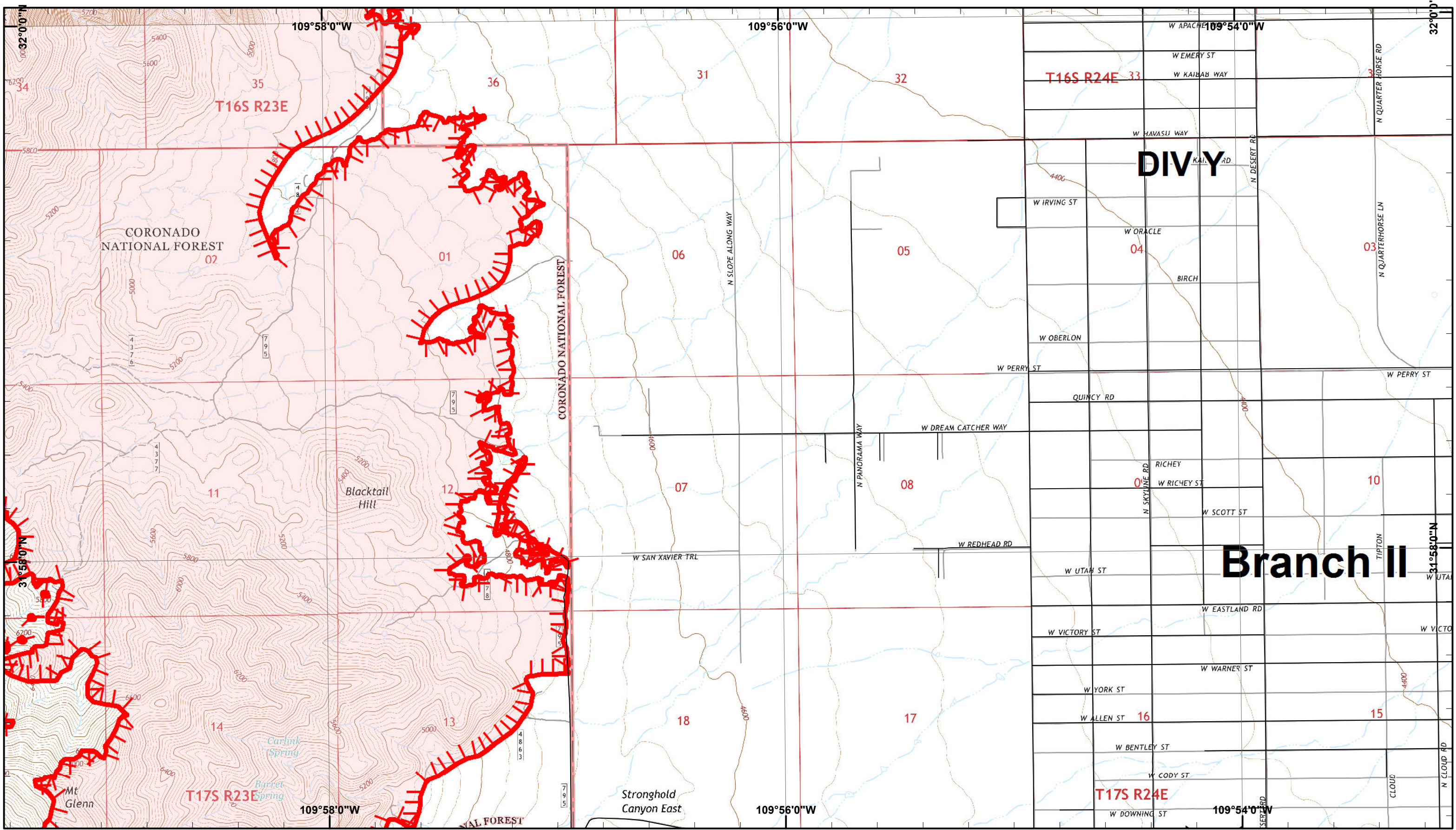
Lizard Incident IAP Map

GIS Acres 15,088
6/10/2017 21:41



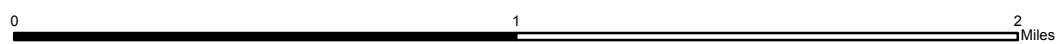
Day Operational Period 6/13/2017 Map Created 6/12/2017 9:01:40 PM

- Roads
- Repeater
- Completed Line
- Uncontrolled Fire Edge
- Fire Perimeter
- Division
- Branch



Lizard Incident IAP Map

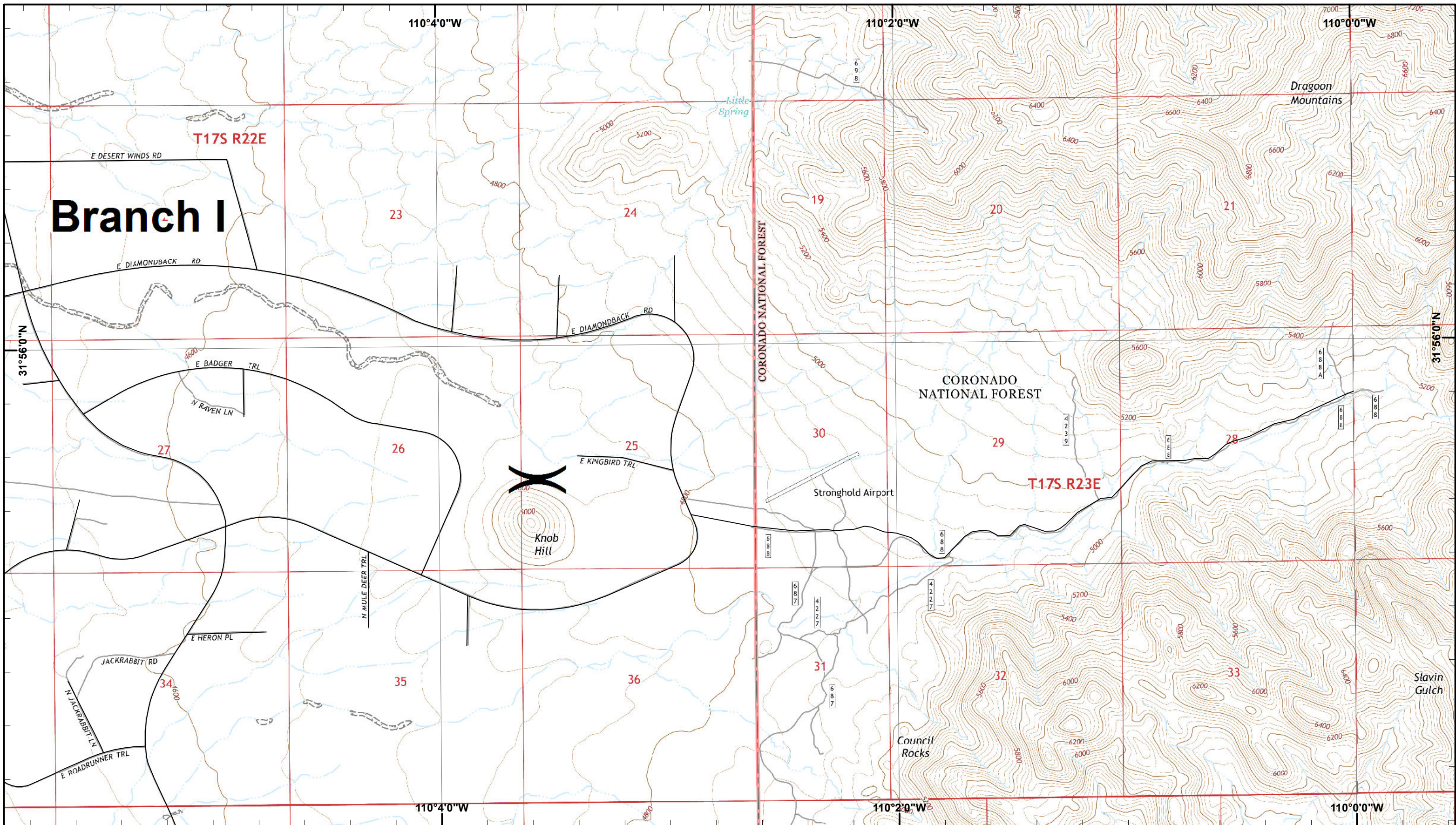
GIS Acres 15,088
6/10/2017 21:41



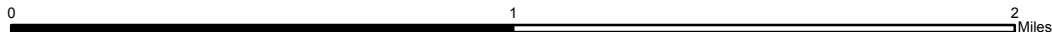
Day Operational Period 6/13/2017 Map Created 6/12/2017 9:01:54 PM

- Roads
- ▬ Uncontrolled Fire Edge
- Fire Perimeter

-) Division
-] Branch



GIS Acres 15,088
6/10/2017 21:41



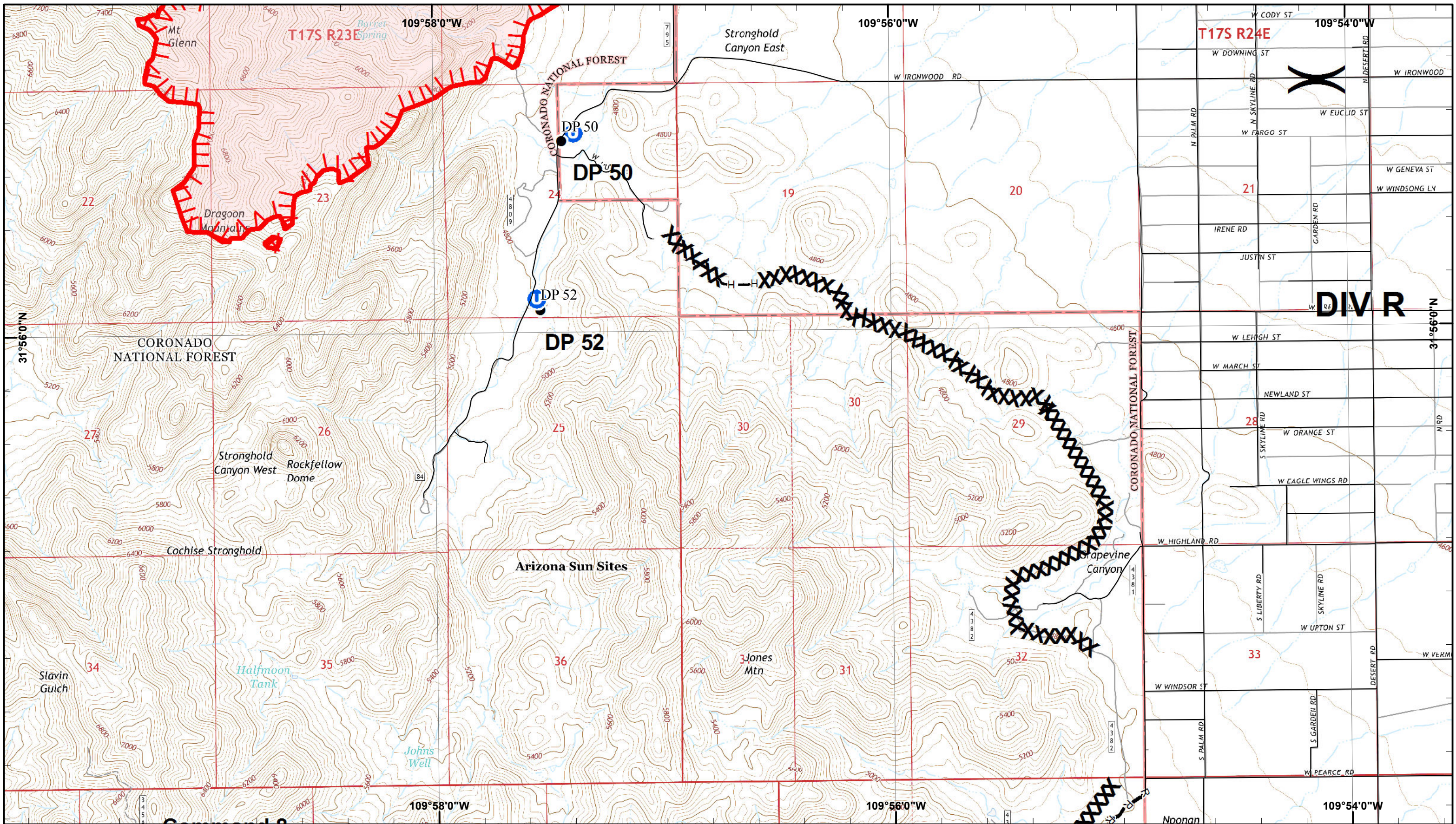
Lizard Incident IAP Map

Day Operational Period 6/13/2017 Map Created 6/12/2017 9:02:07 PM

X Division

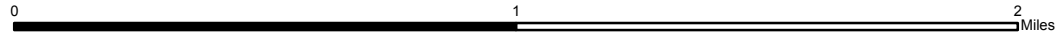
|| Branch

— Roads



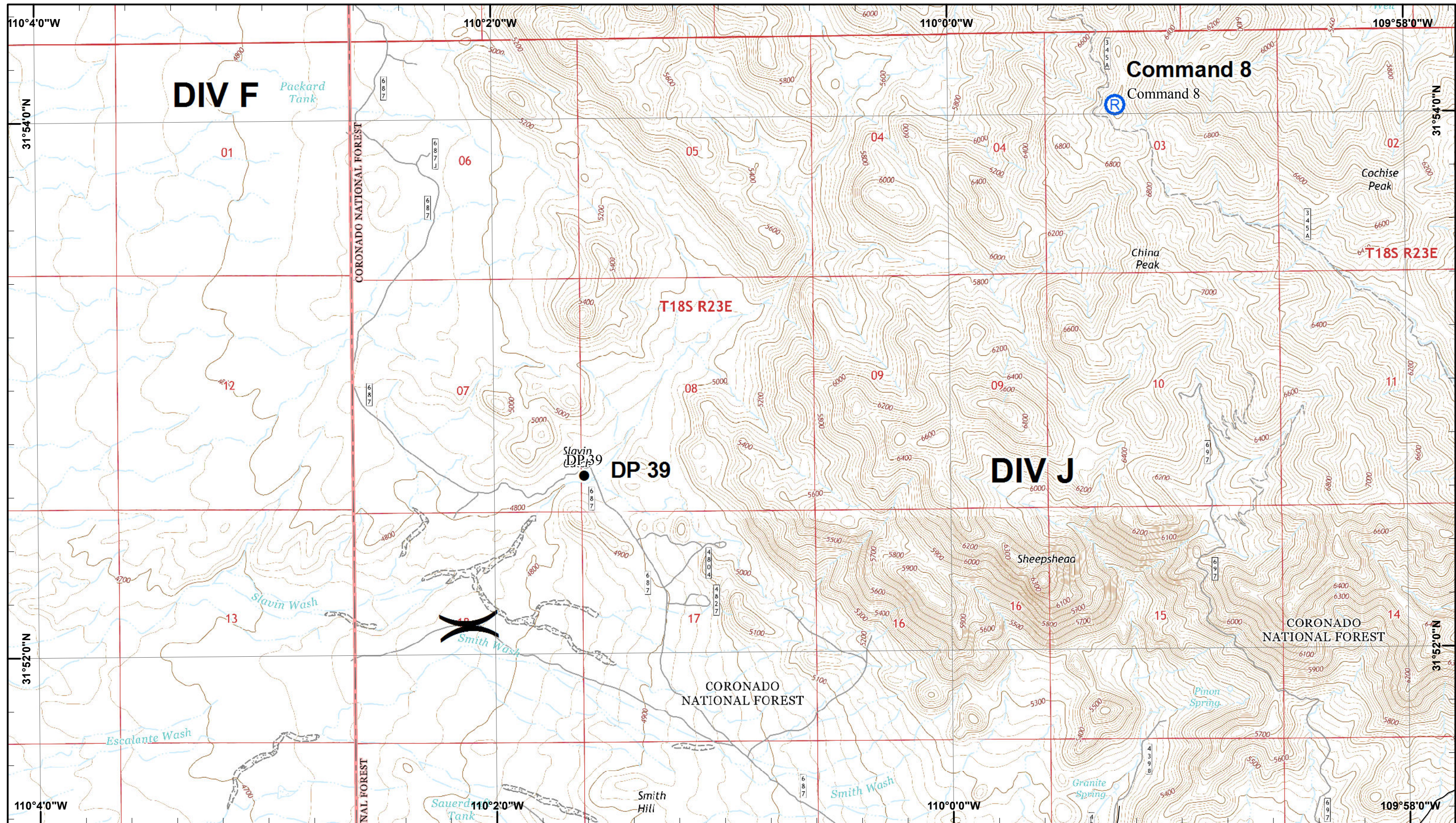
Lizard Incident IAP Map

GIS Acres 15,088
6/10/2017 21:41



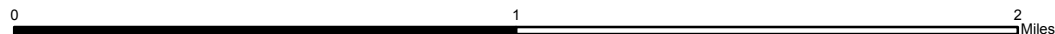
Day Operational Period 6/13/2017 Map Created 6/12/2017 9:02:19 PM

- Roads
- Drop Point
- Unimproved Landing Area
- Road as Completed Line
- Completed Dozer Line
- Hand Line
- Uncontrolled Fire Edge
- Fire Perimeter
- Division
- Branch



Lizard Incident IAP Map

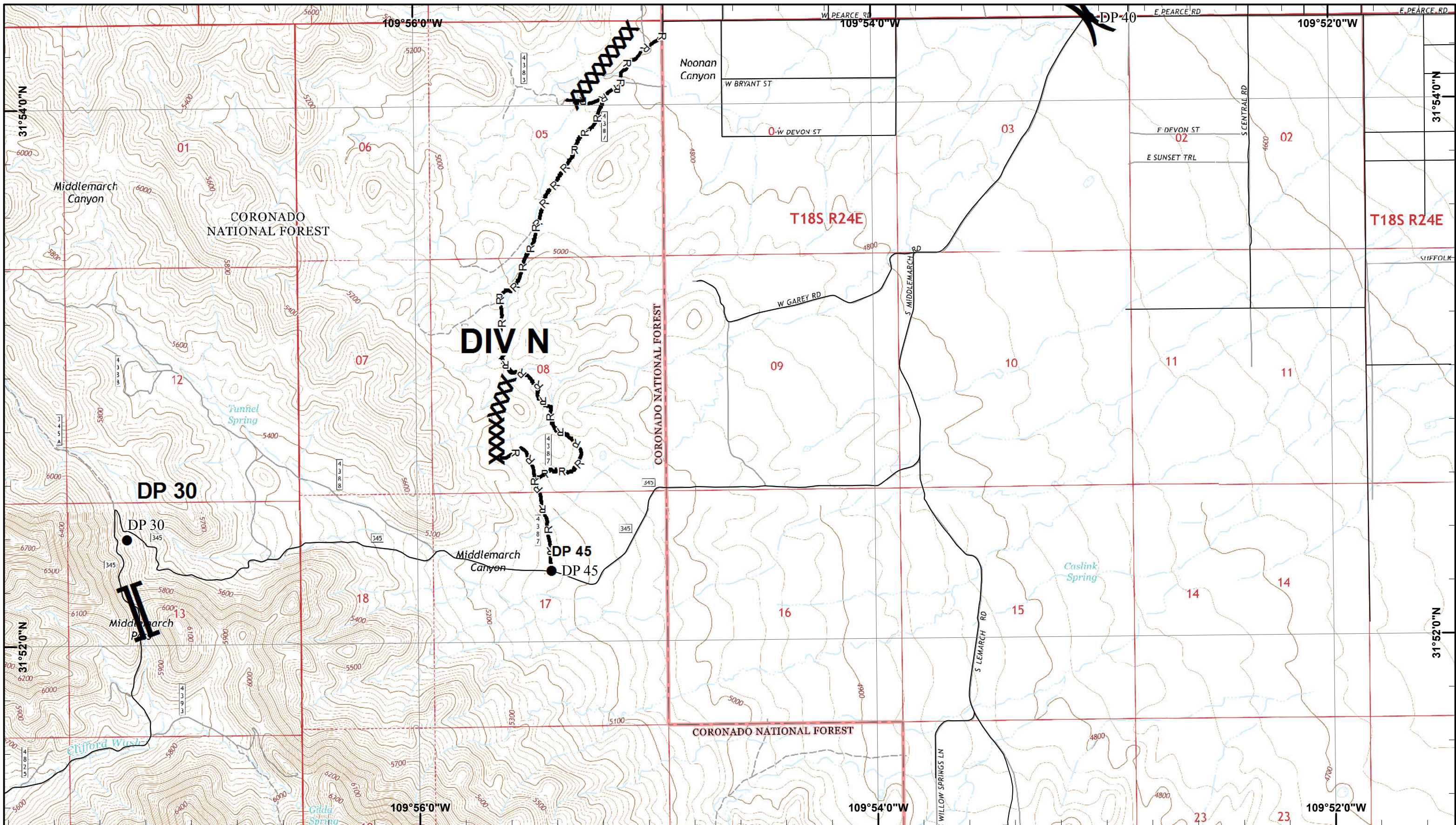
GIS Acres 15,088
6/10/2017 21:41



Day Operational Period 6/13/2017 Map Created 6/12/2017 9:02:32 PM

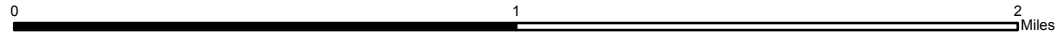
- Roads
- Drop Point
- Ⓡ Repeater

-) Division
- [[Branch



Lizard Incident IAP Map

GIS Acres 15,088
6/10/2017 21:41



- Roads
- Drop Point
- R—R Road as Completed Line
- XXX Completed Dozer Line

-) Division
-] Branch