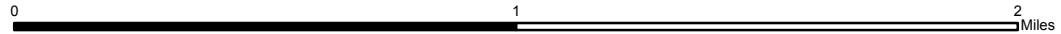


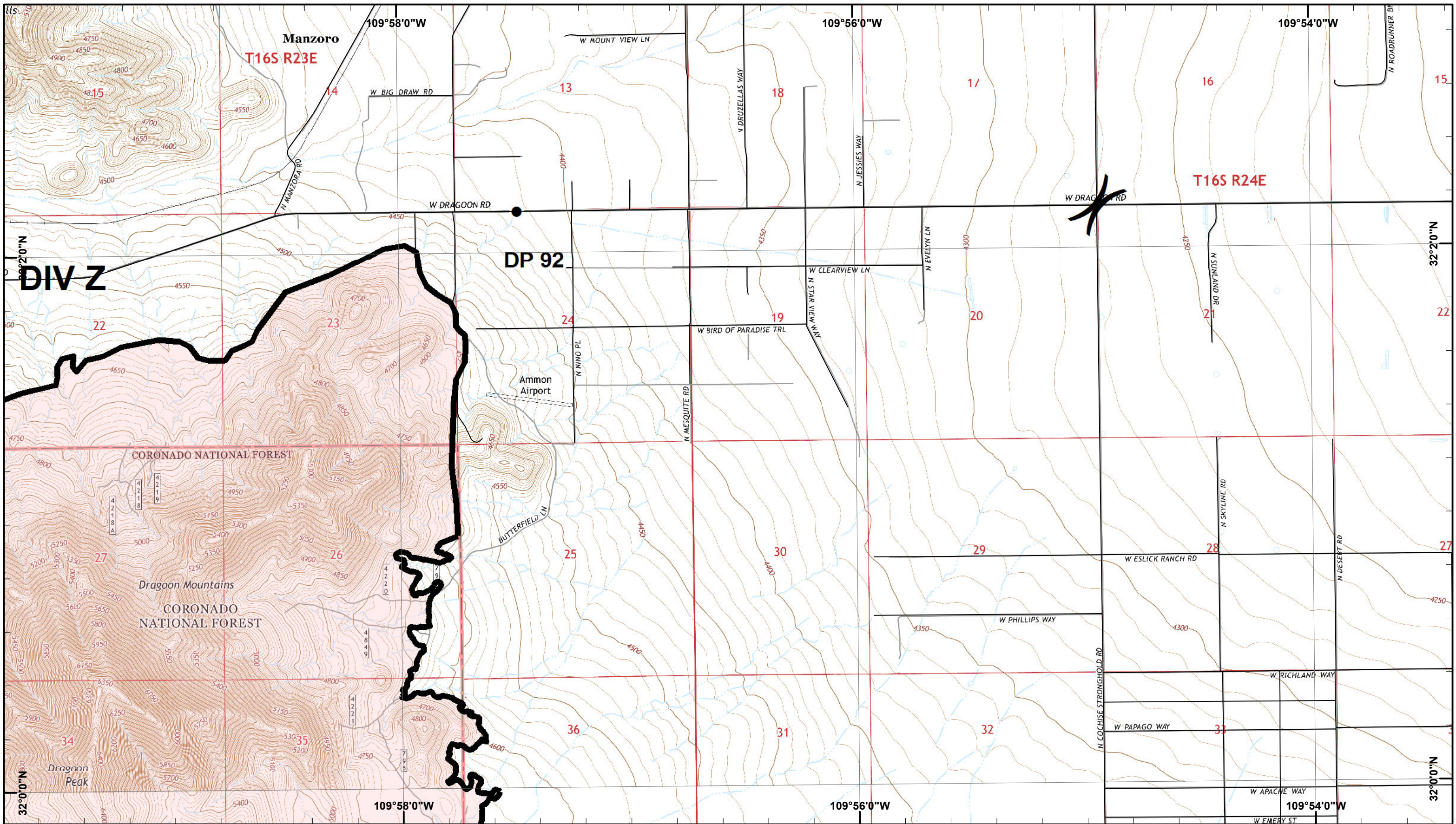
Lizard Incident IAP Map

GIS Acres 15,211
6/12/2017 2300



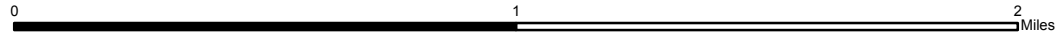
Day Operational Period 6/14/2017 Map Created 6/13/2017 8:51:05 PM

- Roads
- Drop Point
- Ⓜ Helibase
- Completed Line
- Fire Perimeter
-) Division
-] Branch



Lizard Incident IAP Map

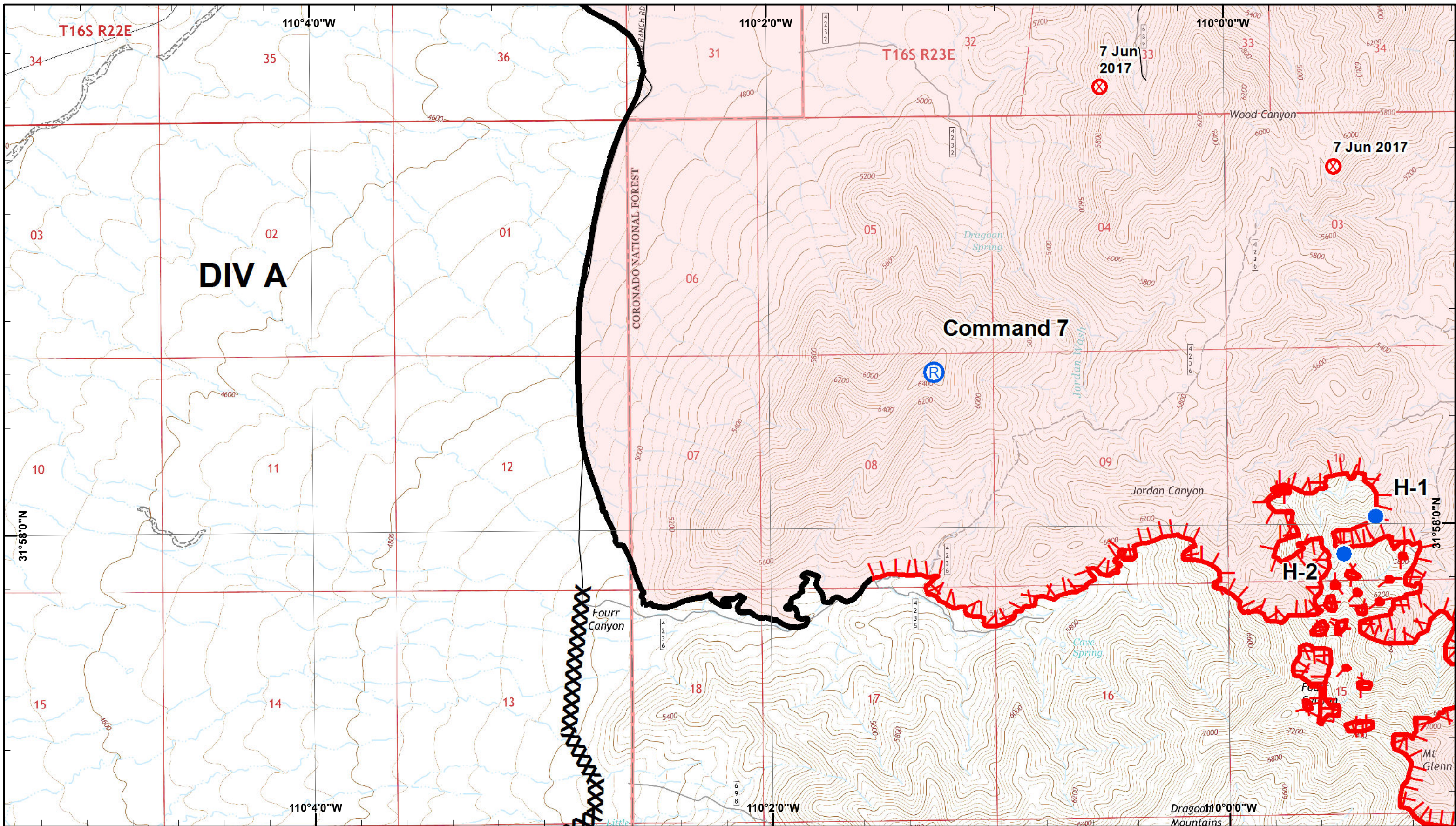
GIS Acres 15,211
6/12/2017 2300



Day Operational Period 6/14/2017 Map Created 6/13/2017 8:51:34 PM

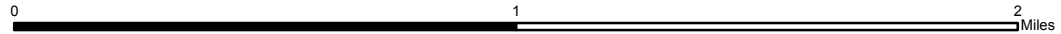
- Roads
- Drop Point
- █ Completed Line
- █ Fire Perimeter

-) Division
-] Branch



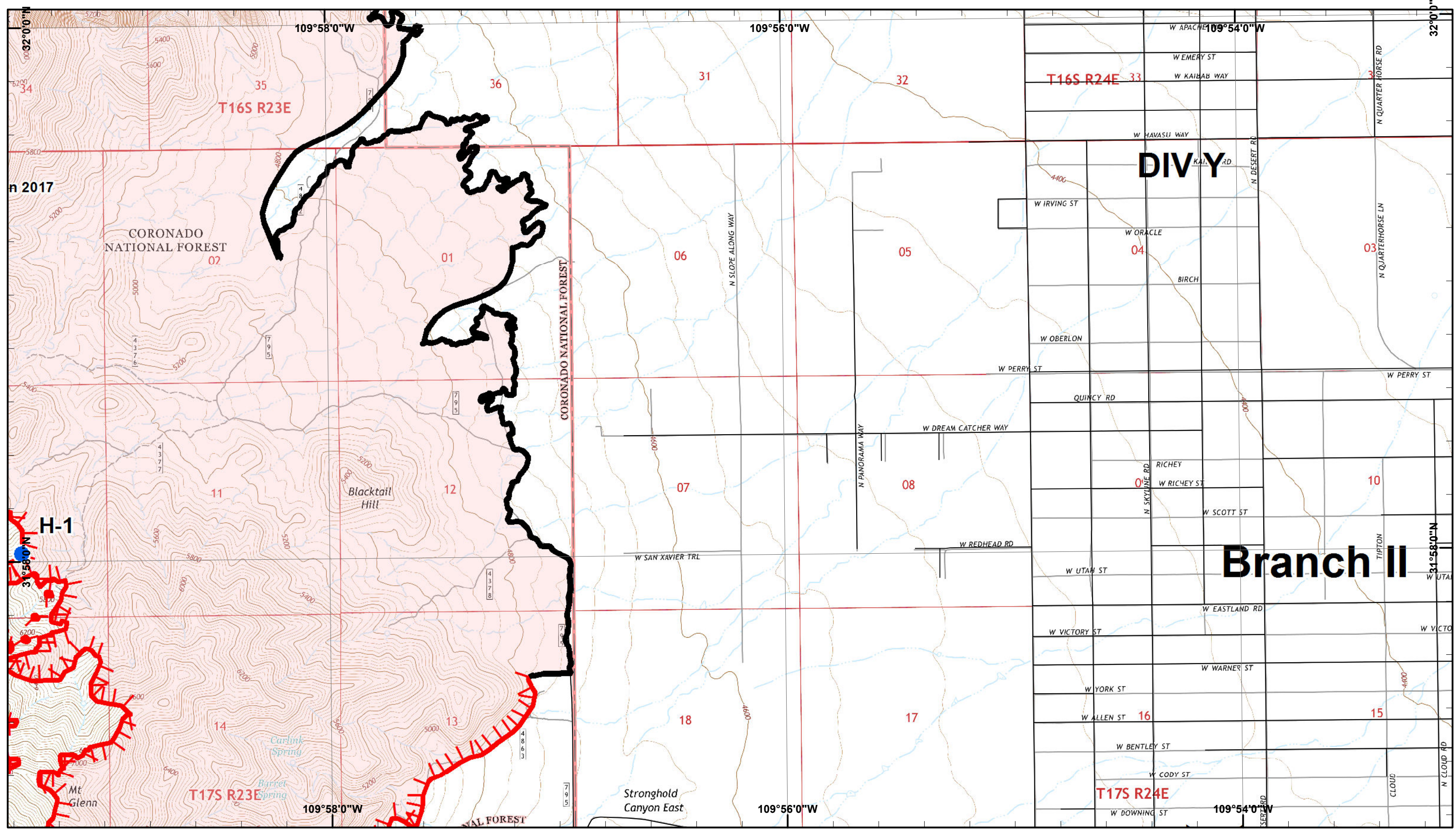
Lizard Incident IAP Map

GIS Acres 15,211
6/12/2017 2300



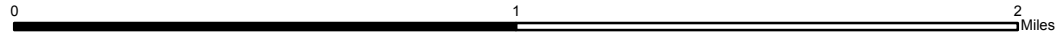
Day Operational Period 6/14/2017 Map Created 6/13/2017 8:52:25 PM

- Roads
- ⊗ Fire Origin
- Helispot
- Ⓡ Repeater
- Completed Line
- XXX Completed Dozer Line
- ▬ Fire Perimeter
-) Division
- [Branch
- ▬ Uncontrolled Fire Edge



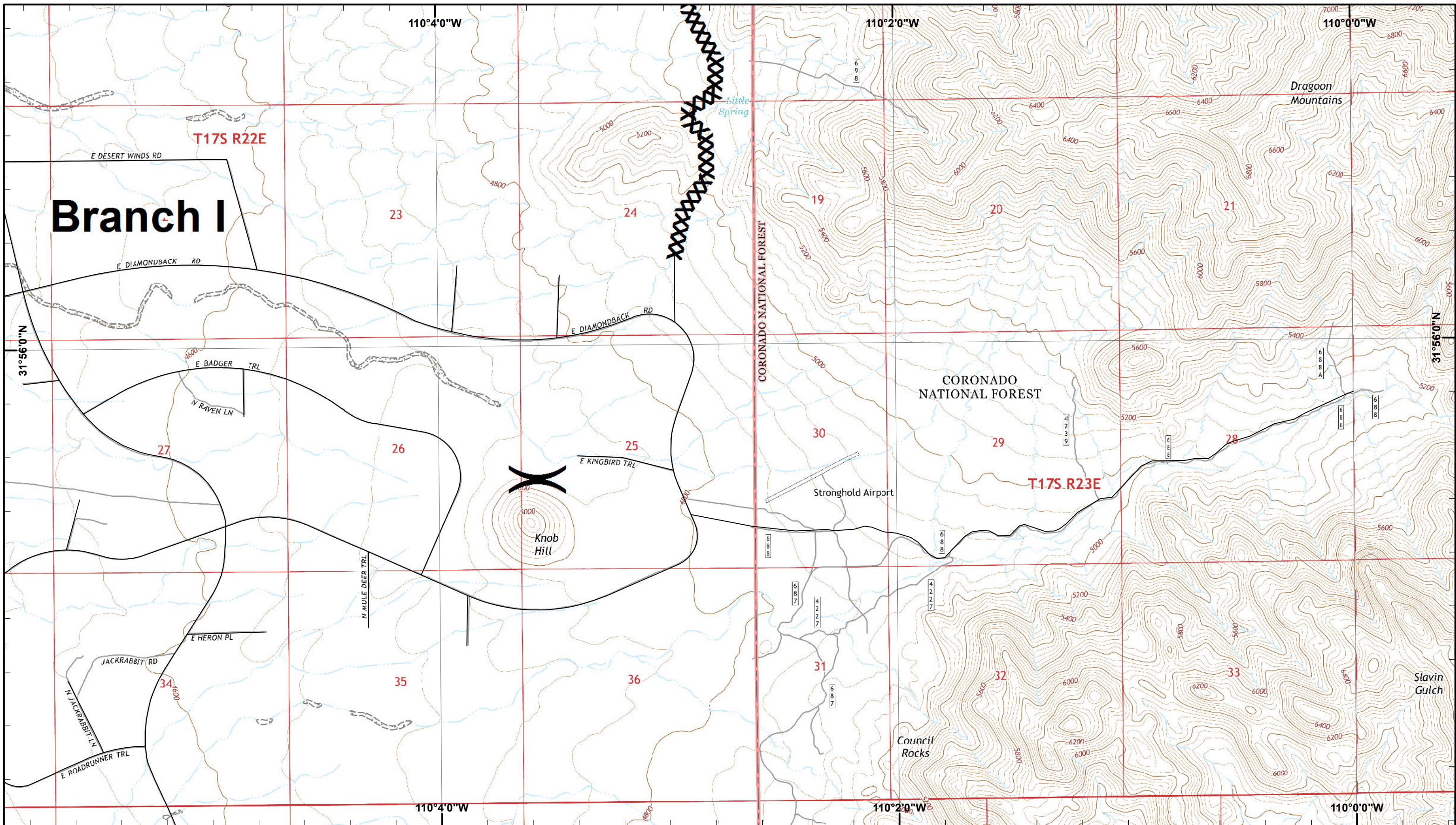
Lizard Incident IAP Map

GIS Acres 15,211
6/12/2017 2300



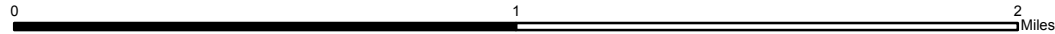
Day Operational Period 6/14/2017 Map Created 6/13/2017 8:52:59 PM

- Roads
- Helispot
- Completed Line
- Uncontrolled Fire Edge
- Fire Perimeter
- Division
- Branch



Lizard Incident IAP Map

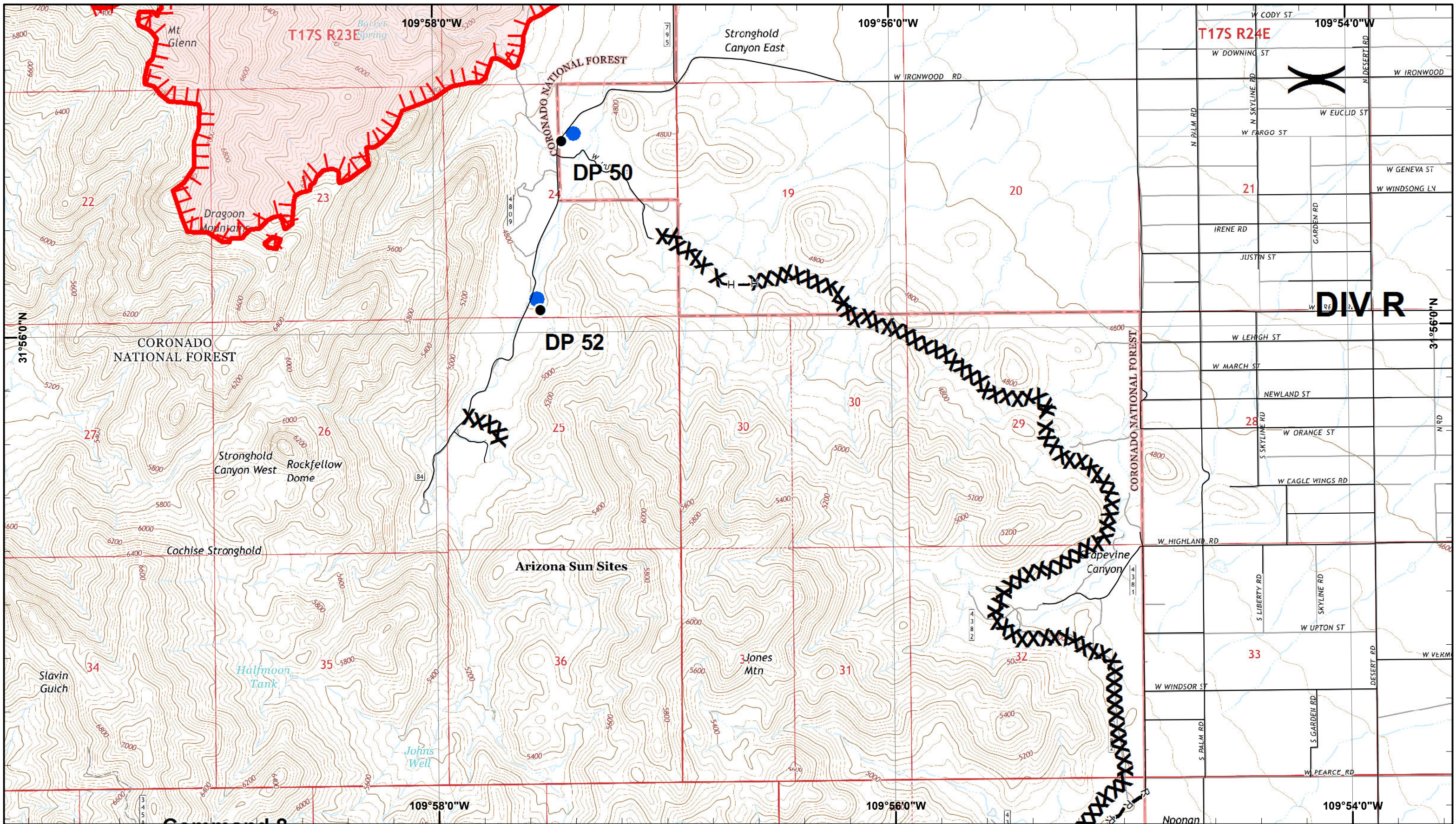
GIS Acres 15,211
6/12/2017 2300



Day Operational Period 6/14/2017 Map Created 6/13/2017 8:53:30 PM

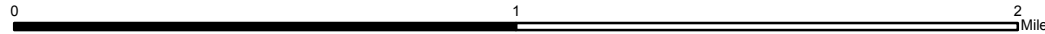
— Roads
XXX Completed Dozer Line

) Division
[Branch



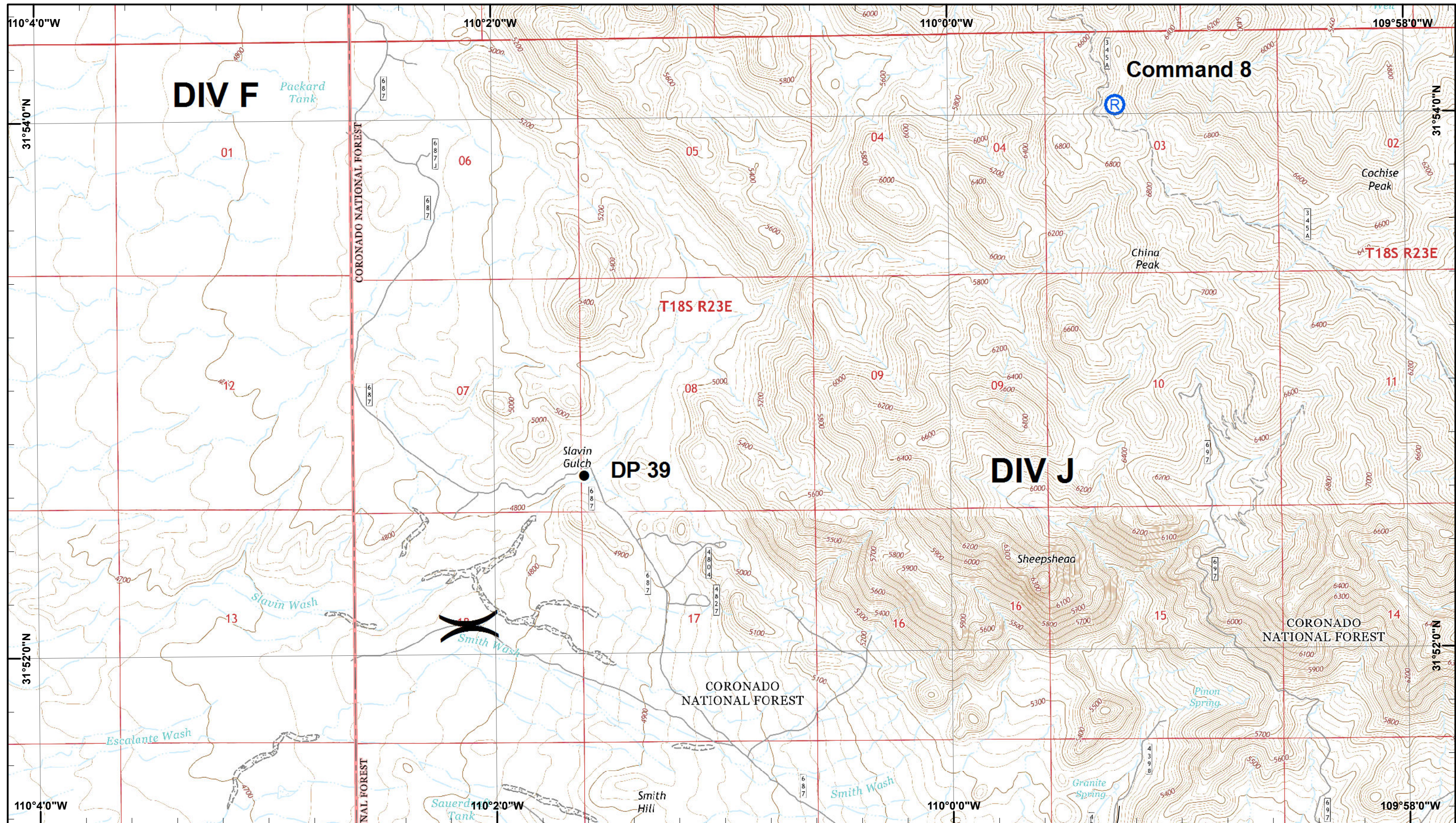
Lizard Incident IAP Map

GIS Acres 15,211
6/12/2017 2300



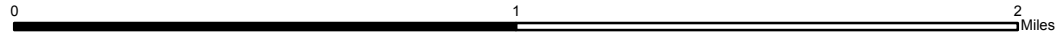
Day Operational Period 6/14/2017 Map Created 6/13/2017 8:54:12 PM

- Roads
- Drop Point
- Helispot
- R—R Road as Completed Line
- XXX Completed Dozer Line
- H—H Hand Line
- Uncontrolled Fire Edge
- Fire Perimeter
-) (Division
- [[Branch



Lizard Incident IAP Map

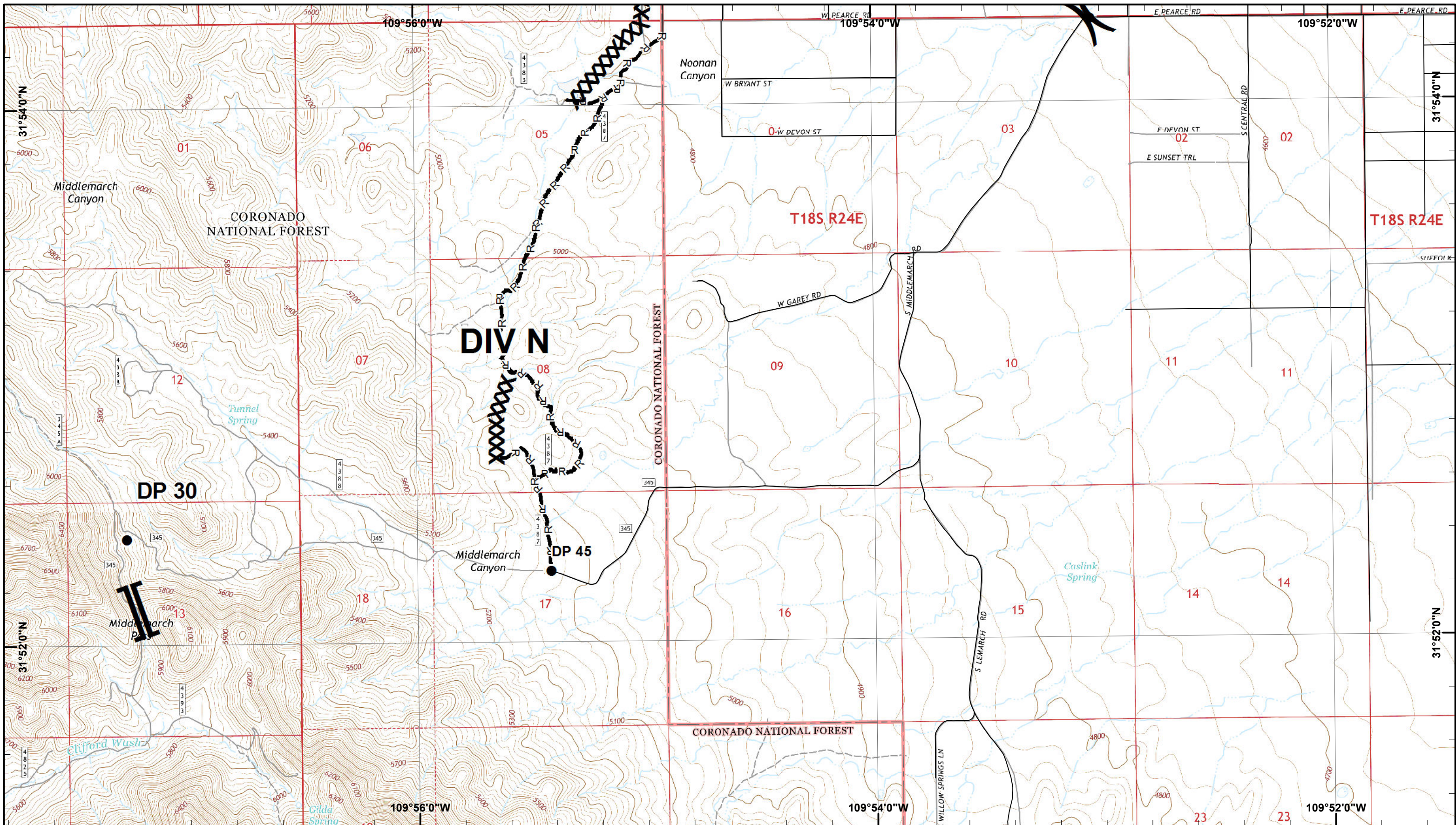
GIS Acres 15,211
6/12/2017 2300



Day Operational Period 6/14/2017 Map Created 6/13/2017 8:54:57 PM

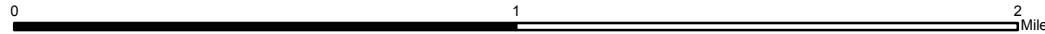
- Roads
- Drop Point
- Ⓡ Repeater

-) (Division
-] [Branch



Lizard Incident IAP Map

GIS Acres 15,211
6/12/2017 2300



Day Operational Period 6/14/2017 Map Created 6/13/2017 8:55:50 PM

- Roads
- Drop Point
- R—R Road as Completed Line
- XXX Completed Dozer Line
-) Division
-] Branch