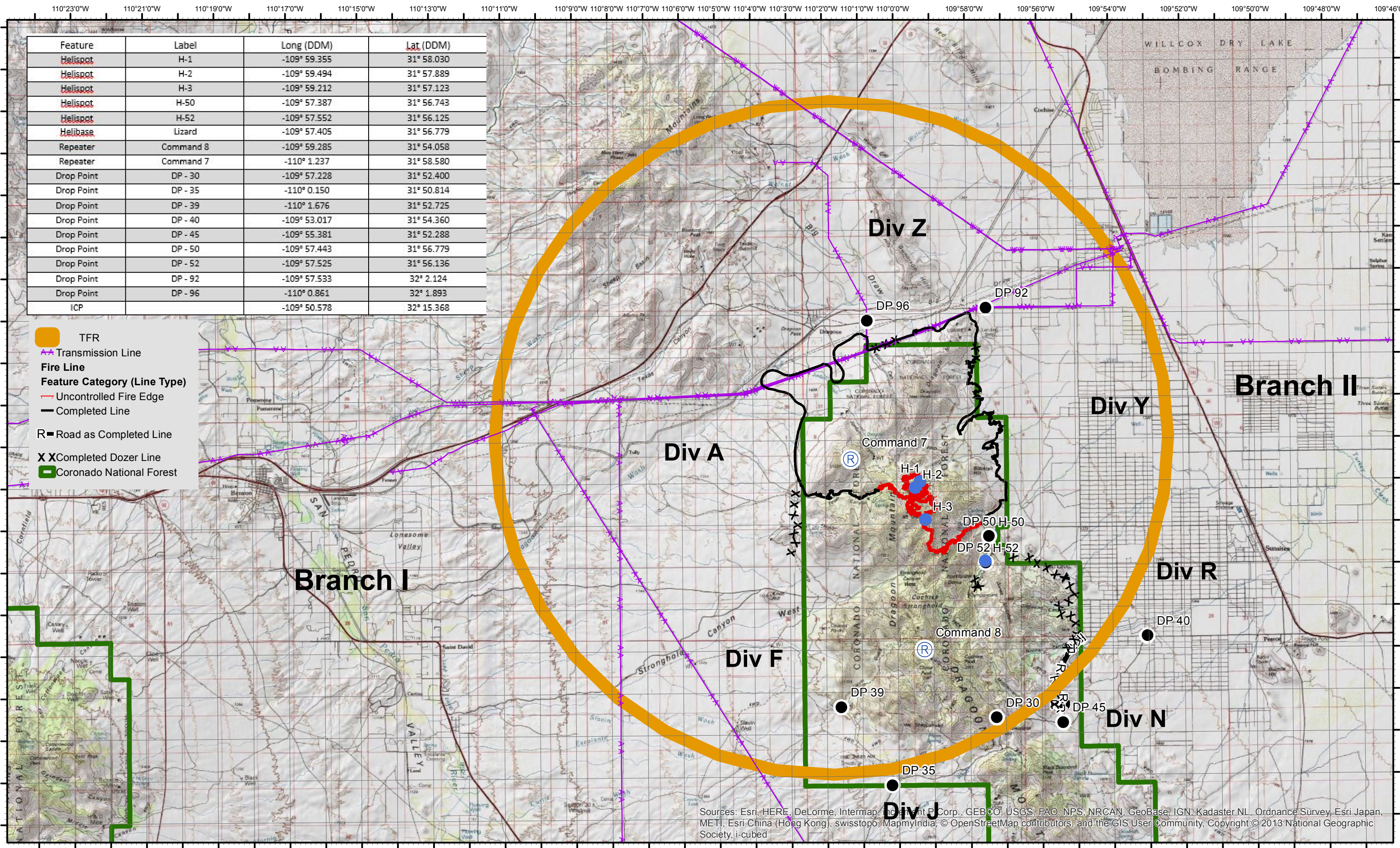


Feature	Label	Long (DDM)	Lat (DDM)
Helispot	H-1	-109° 59.355	31° 58.030
Helispot	H-2	-109° 59.494	31° 57.889
Helispot	H-3	-109° 59.212	31° 57.123
Helispot	H-50	-109° 57.387	31° 56.743
Helispot	H-52	-109° 57.552	31° 56.125
Helibase	Lizard	-109° 57.405	31° 56.779
Repeater	Command 8	-109° 59.285	31° 54.058
Repeater	Command 7	-110° 1.237	31° 58.580
Drop Point	DP - 30	-109° 57.228	31° 52.400
Drop Point	DP - 35	-110° 0.150	31° 50.814
Drop Point	DP - 39	-110° 1.676	31° 52.725
Drop Point	DP - 40	-109° 53.017	31° 54.360
Drop Point	DP - 45	-109° 55.381	31° 52.288
Drop Point	DP - 50	-109° 57.443	31° 56.779
Drop Point	DP - 52	-109° 57.525	31° 56.136
Drop Point	DP - 92	-109° 57.533	32° 2.124
Drop Point	DP - 96	-110° 0.861	32° 1.893
ICP		-109° 50.578	32° 15.368

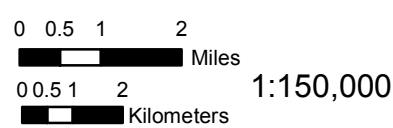
- TFR
- Transmission Line
- Fire Line
- Feature Category (Line Type)**
- Uncontrolled Fire Edge
- Completed Line
- R Road as Completed Line
- X Completed Dozer Line
- Coronado National Forest



Sources: Esri, HERE, DeLorme, Intermap, Inc., Swisstopo, GEBCO, USGS, FAO, NPS, NRCAN, GeoBase, IGN, Kadaster NL, Ordnance Survey, Esri Japan, METI, Esri China (Hong Kong), swisstopo, MapmyIndia, © OpenStreetMap contributors, and the GIS User Community, Copyright © 2013 National Geographic Society, i-cubed

**Lizard Air Ops**  
**AZ-CNF-000464**

GIS Acres 15,212  
6/13/2017 2139  
Day Operational Period 6/15/2017



Map Created: 6/14/2017, 8:09:23 PM, By M. Hill

**NAD 1983 UTM Zone 12N**



**SOUTHWEST AREA TYPE 1**  
**INCIDENT MANAGEMENT TEAM 2**  
JOHN PIERSON - INCIDENT COMMANDER