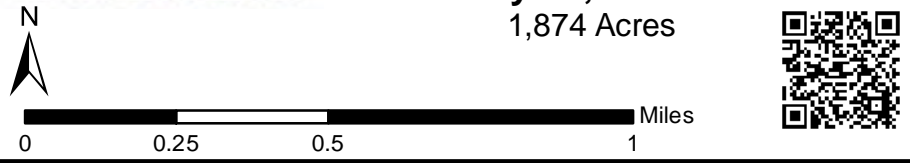


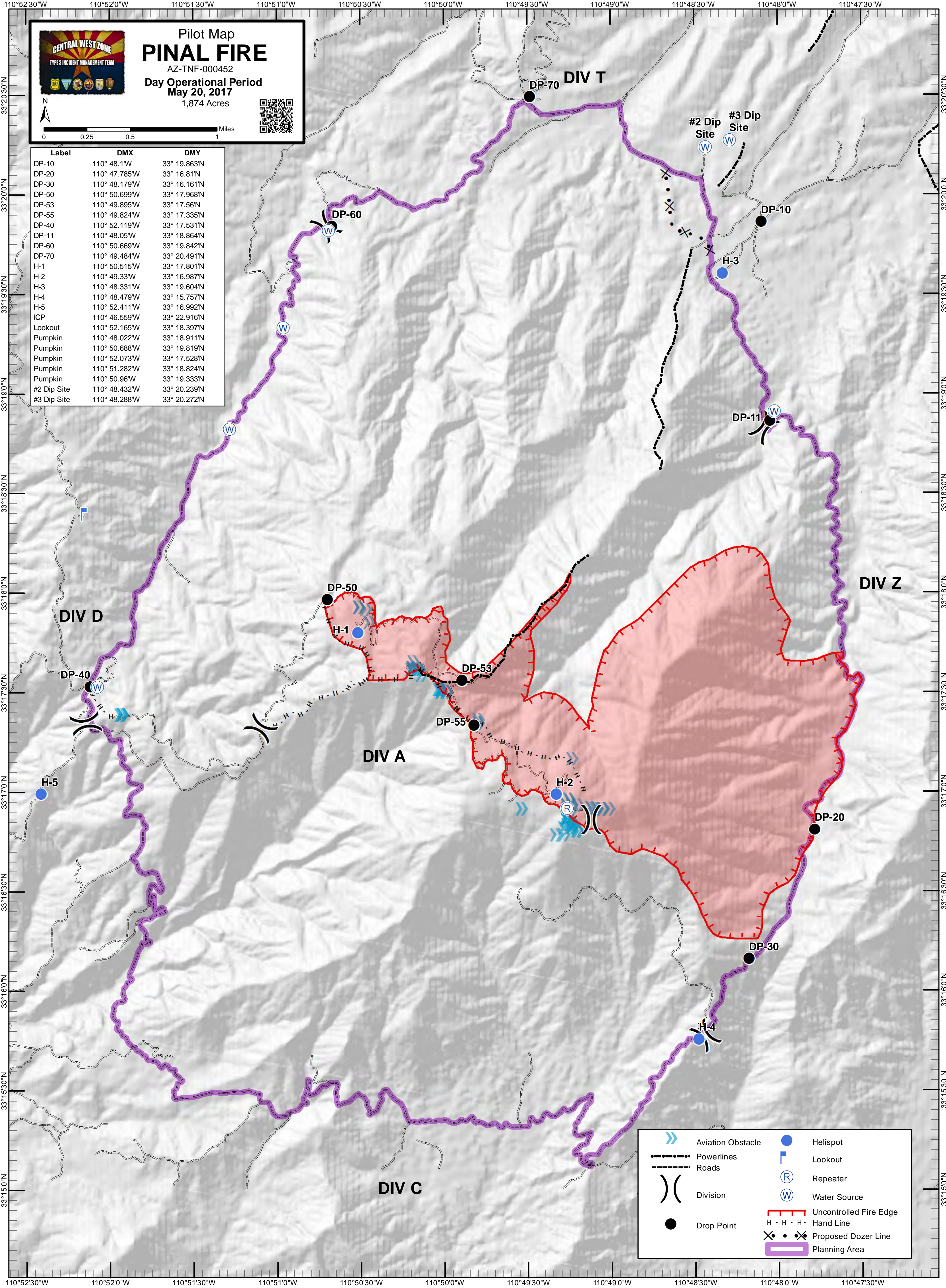


Pilot Map PINAL FIRE

AZ-TNF-000452
Day Operational Period
May 20, 2017
1,874 Acres



Label	DMX	DMY
DP-10	110° 48.1'W	33° 19.863'N
DP-20	110° 47.785'W	33° 16.81'N
DP-30	110° 48.179'W	33° 16.161'N
DP-50	110° 50.699'W	33° 17.968'N
DP-53	110° 49.895'W	33° 17.56'N
DP-55	110° 49.824'W	33° 17.335'N
DP-40	110° 52.119'W	33° 17.531'N
DP-11	110° 48.05'W	33° 18.864'N
DP-60	110° 50.669'W	33° 19.842'N
DP-70	110° 49.484'W	33° 20.491'N
H-1	110° 50.515'W	33° 17.801'N
H-2	110° 49.33'W	33° 16.987'N
H-3	110° 48.331'W	33° 19.604'N
H-4	110° 48.479'W	33° 15.757'N
H-5	110° 52.411'W	33° 16.992'N
ICP	110° 46.559'W	33° 22.916'N
Lookout	110° 52.165'W	33° 18.397'N
Pumpkin	110° 48.022'W	33° 18.911'N
Pumpkin	110° 50.688'W	33° 19.819'N
Pumpkin	110° 52.073'W	33° 17.528'N
Pumpkin	110° 51.282'W	33° 18.824'N
Pumpkin	110° 50.96'W	33° 19.333'N
#2 Dip Site	110° 48.432'W	33° 20.239'N
#3 Dip Site	110° 48.288'W	33° 20.272'N



	Aviation Obstacle		Helispot
	Powerlines		Lookout
	Roads		Repeater
	Division		Water Source
	Drop Point		Uncontrolled Fire Edge
			Hand Line
			Proposed Dozer Line
			Planning Area