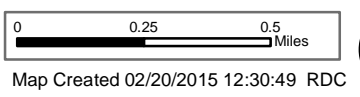


Pinal Incident
 Day Operational Period 5/25/2017

GIS Acres 4,376
 5/24/2017 10:30



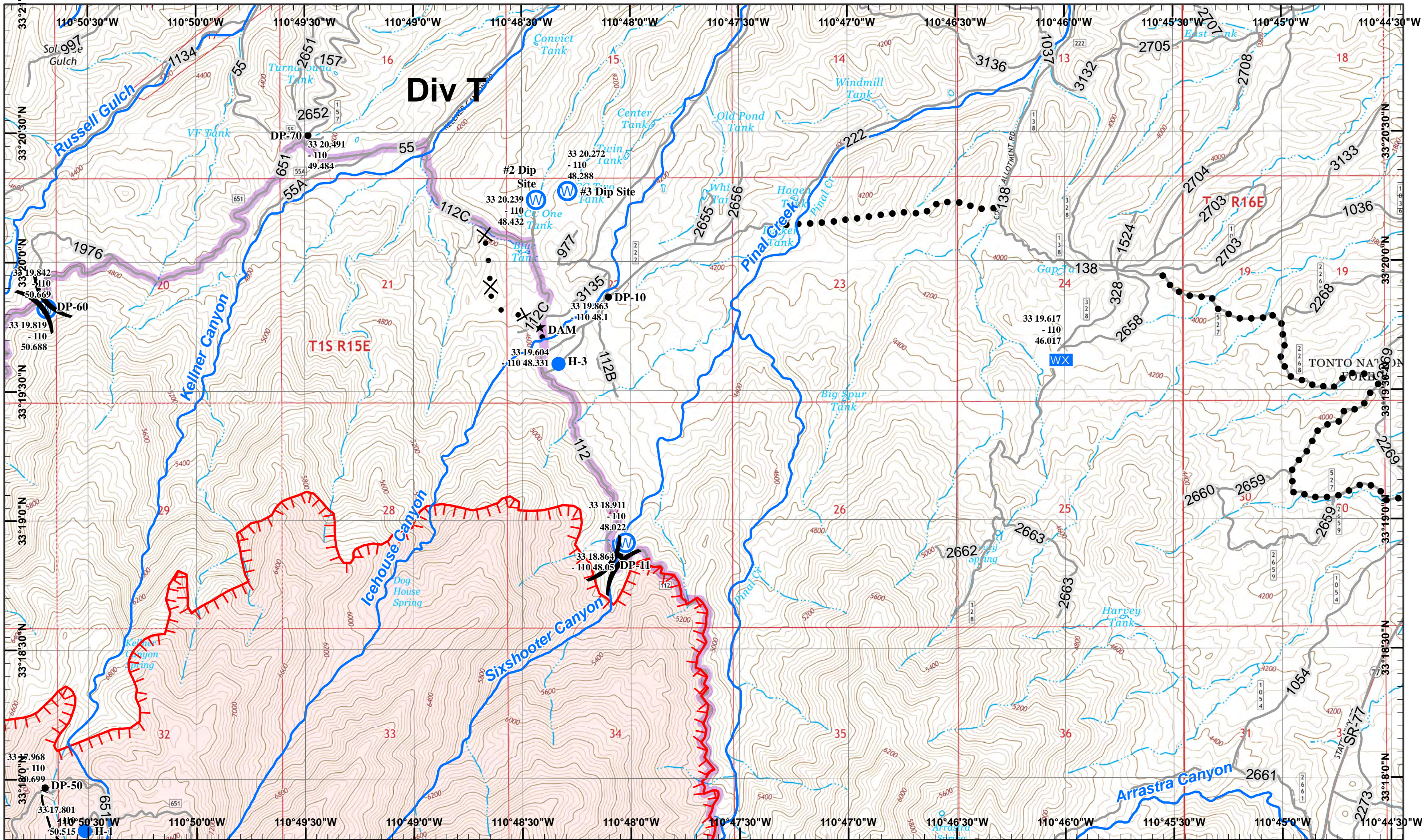
- North
- Helispot
- Water Source
- Repeater
- Lookout
- Uncontrolled Fire Edge
- Drop Point
- Hand Line

Neighboring Pages

West Page	North Page	East Page 2	
	Douth Page 3		

1	2
3	4

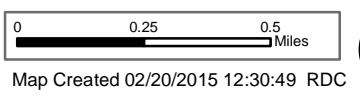
Page 1
)(Division
 || Branch



Div T

Pinal Incident
 Day Operational Period 5/25/2017

GIS Acres 4,376
 5/24/2017 10:30



- Helispot
- W Water Source
- WX Mobil Weather Unit
- ★ Other
- H Hand Line
- Planned Secondary Line
- Uncontrolled Fire Edge
- Proposed Dozer Line

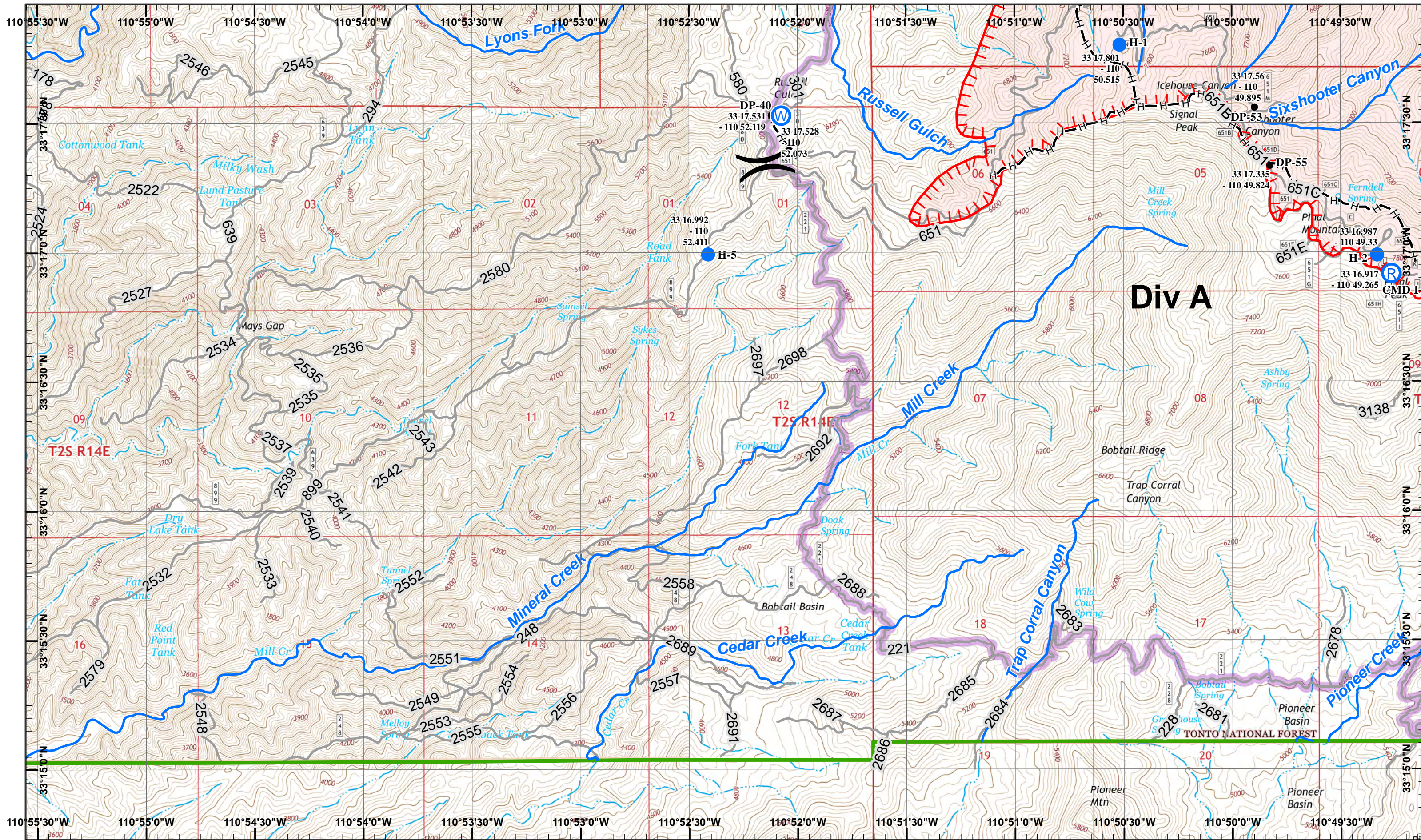
Neighboring Pages

West Page 1	North Page Douth Page 4	East Page
-------------	----------------------------	-----------

1	2
3	4

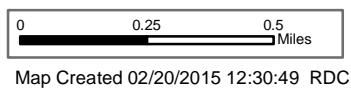
Page 2
)(Division
 || Branch





Pinal Incident
 Day Operational Period 5/25/2017

GIS Acres 4,376
 5/24/2017 10:30



- Helispot
- W Water Source
- R Repeater
- Hand Line
- Uncontrolled Fire Edge
- Drop Point

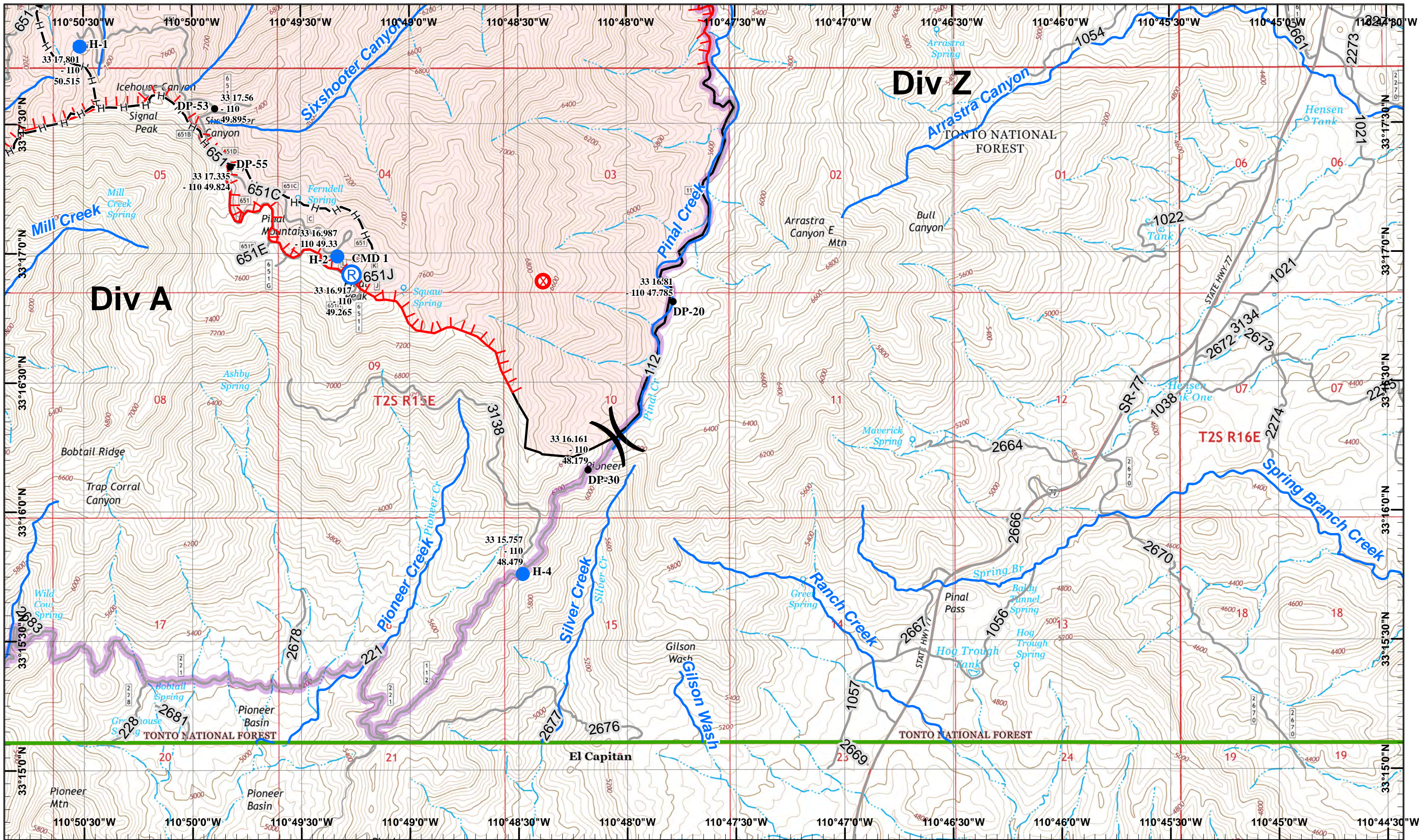
Neighboring Pages

West Page	North Page 1 Douth Page	East Page 4
-----------	----------------------------	-------------

1	2
3	4

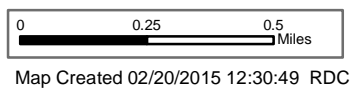
Page 3
)(Division
 || Branch





Pinal Incident
 Day Operational Period 5/25/2017

GIS Acres 4,376
 5/24/2017 10:30



- North
- Fire Origin
- Repeater
- Hand Line
- Helispot
- Drop Point
- Uncontrolled Fire Edge
- Completed Line

Neighboring Pages

West Page 3	North Page 2 Douth Page	East Page
-------------	----------------------------	-----------

1	2
3	4

Page 4
)(Division
 || Branch

