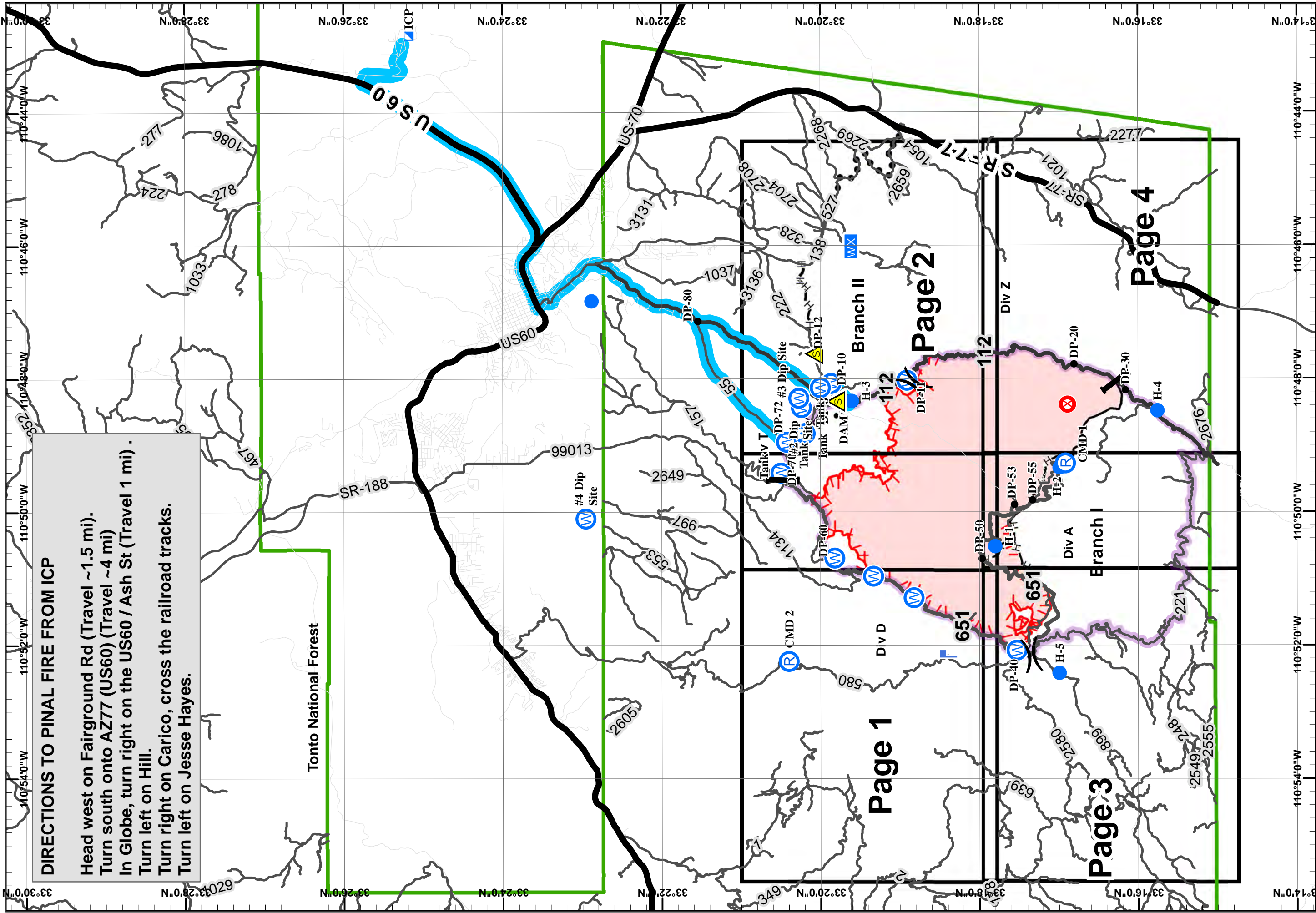
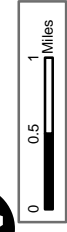


DIRECTIONS TO PINAL FIRE FROM ICP

- Head west on Fairground Rd (Travel ~1.5 mi).
- Turn south onto AZ77 (US60) (Travel ~4 mi)
- In Globe, turn right on the US60 / Ash St (Travel 1 mi) .
- Turn left on Hill.
- Turn right on Carico, cross the railroad tracks.
- Turn left on Jesse Hayes.



GIS Acres 6,610
5/27/2017 2004



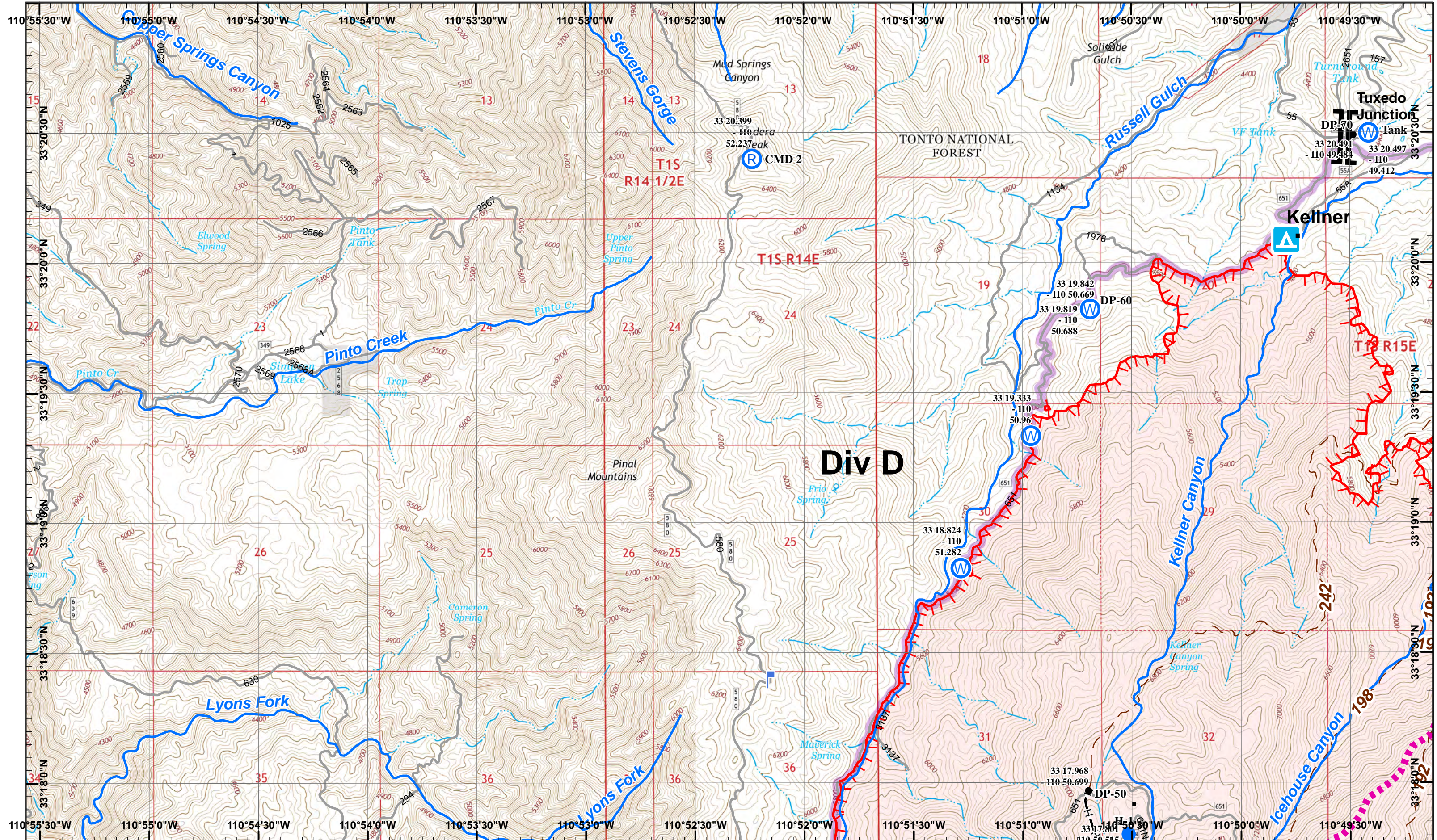
Day Operational Period 5/28/2017
NAD 1983 UTM Zone 12N
Map Created: 5/28/2017, 6:33:23 AM, By RDC

- Fire Origin (Red X)
- Incident Command Post (Blue R)
- Heliport (Blue H)
- Water Source (Blue W)
- Mobil Weather Unit (Blue WX)
- Repeater (Blue R)
- Drop Point (Black dot)
- Other (Black star)
- Lookout (Blue L)
- Mobil Weather Unit (Blue WX)
- Safety Zone (Yellow triangle)



) (Division
| | Branch





Pinal Incident
 Day Operational Period 5/28/2017

GIS Acres 6,610
 5/27/2017 2004
 Map Created 02/20/2015 12:30:49 RDC



- Helispot
- W Water Source
- R Repeater
- └ Lookout
- Drop Point
- ▬▬▬ Buried Power Line
- └ Hand Line
- ▬▬▬ Uncontrolled Fire Edge

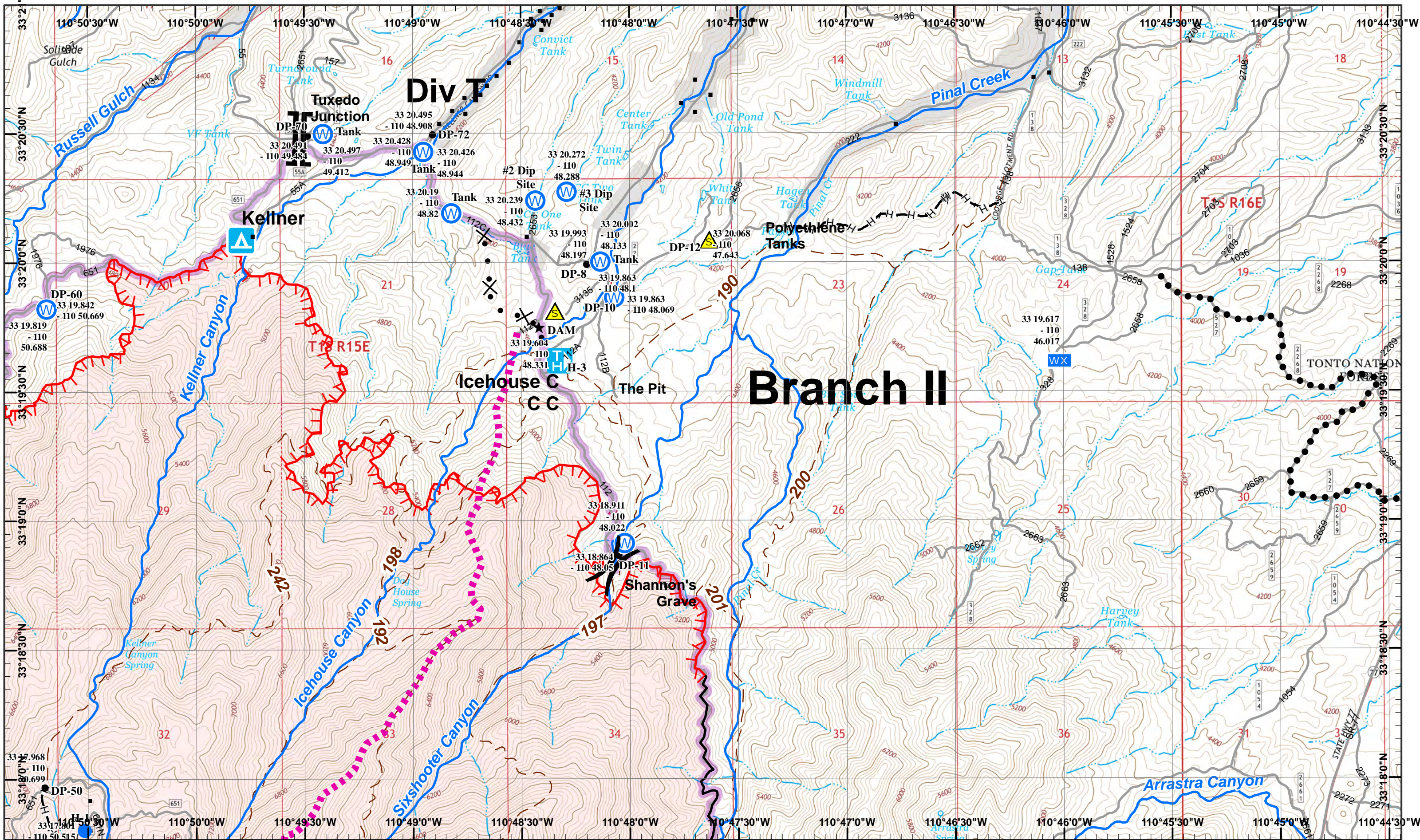
Neighboring Pages

West Page	North Page	East Page 2	Douth Page 3
-----------	------------	-------------	--------------

1	2
3	4

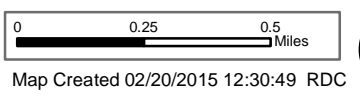
Page 1
)(Division
 || Branch





Pinal Incident
 Day Operational Period 5/28/2017

GIS Acres 6,610
 5/27/2017 2004



- Helispot
- W Water Source
- WX Mobil Weather Unit
- ★ Other
- S Safety Zone
- Drop Point
- Buried Power Line
- Planned Secondary Line
- Completed Line
- Hand Line
- Proposed Dozer Line

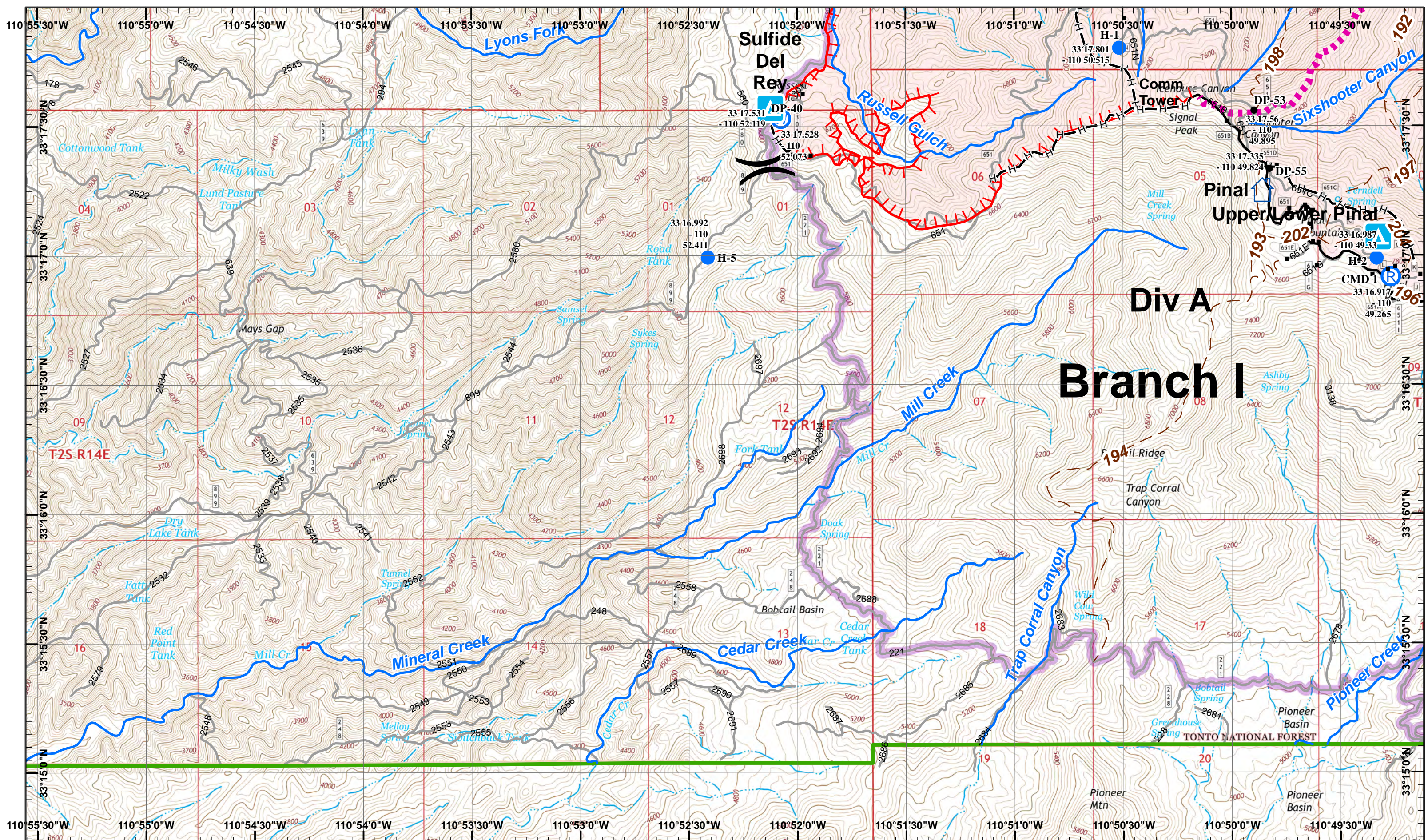
Neighboring Pages

West Page 1	North Page Douth Page 4	East Page
-------------	----------------------------	-----------

1	2
3	4

Page 2
)(Division
 || Branch





Div A Branch I

Pinal Incident
Day Operational Period 5/28/2017

GIS Acres 6,610
5/27/2017 2004
Map Created 02/20/2015 12:30:49 RDC



- Helispot
- W Water Source
- R Repeater
- Buried Power Line
- Uncontrolled Fire Edge
- Hand Line
- Completed Line
- Drop Point

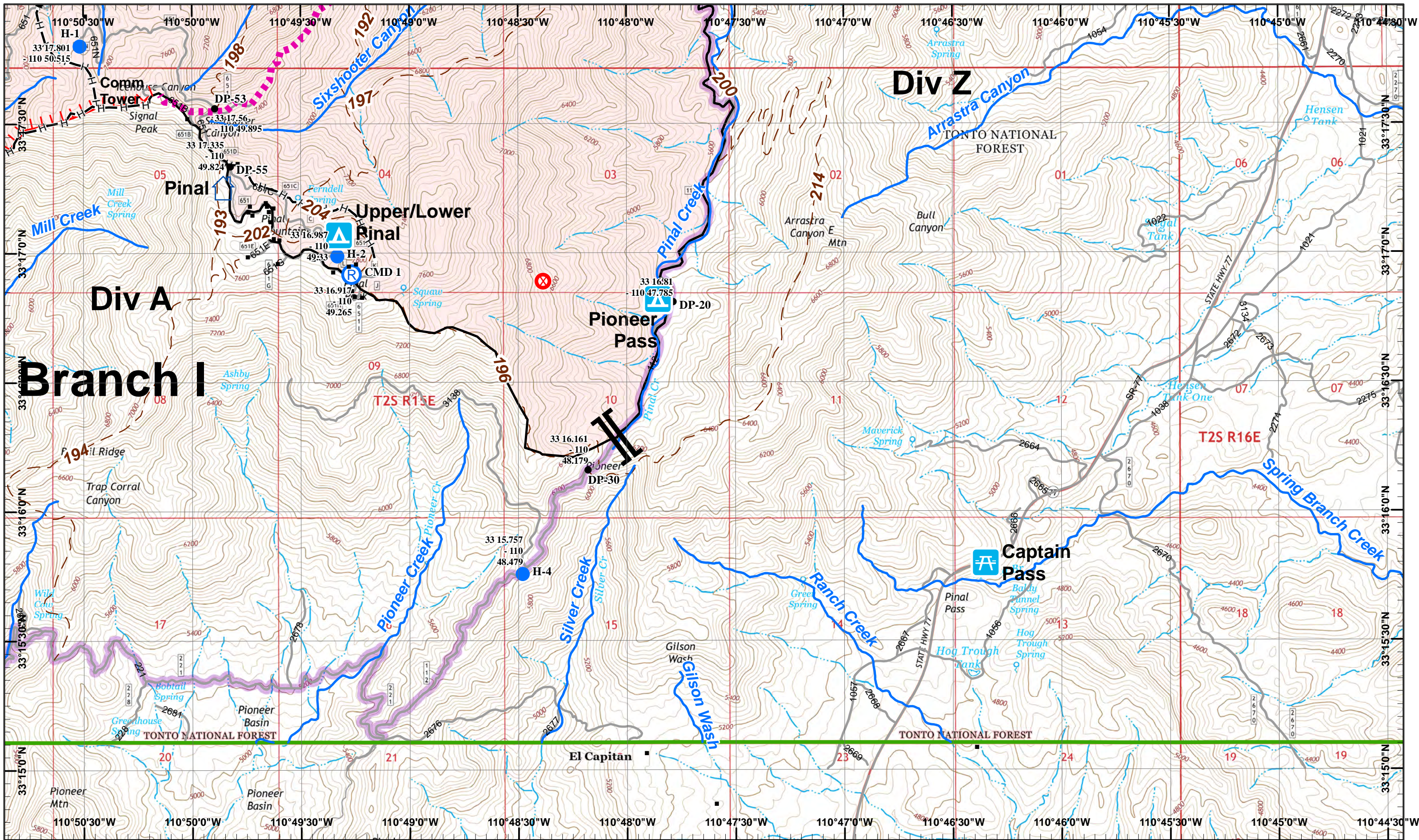
Neighboring Pages

West Page	North Page 1	East Page 4
	Douth Page	

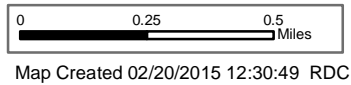
1	2
3	4

Page 3
) Division
| Branch





Pinal Incident
 GIS Acres 6,610
 5/27/2017 2004
 Day Operational Period 5/28/2017



- North Arrow
- Fire Origin
- Repeater
- Buried Power Line
- Uncontrolled Fire Edge
- Helispot
- Drop Point
- Hand Line
- Completed Line

Neighboring Pages
 West Page 3 North Page 2
 South Page East Page

1	2
3	4

Page 4
)(Division
 || Branch

