

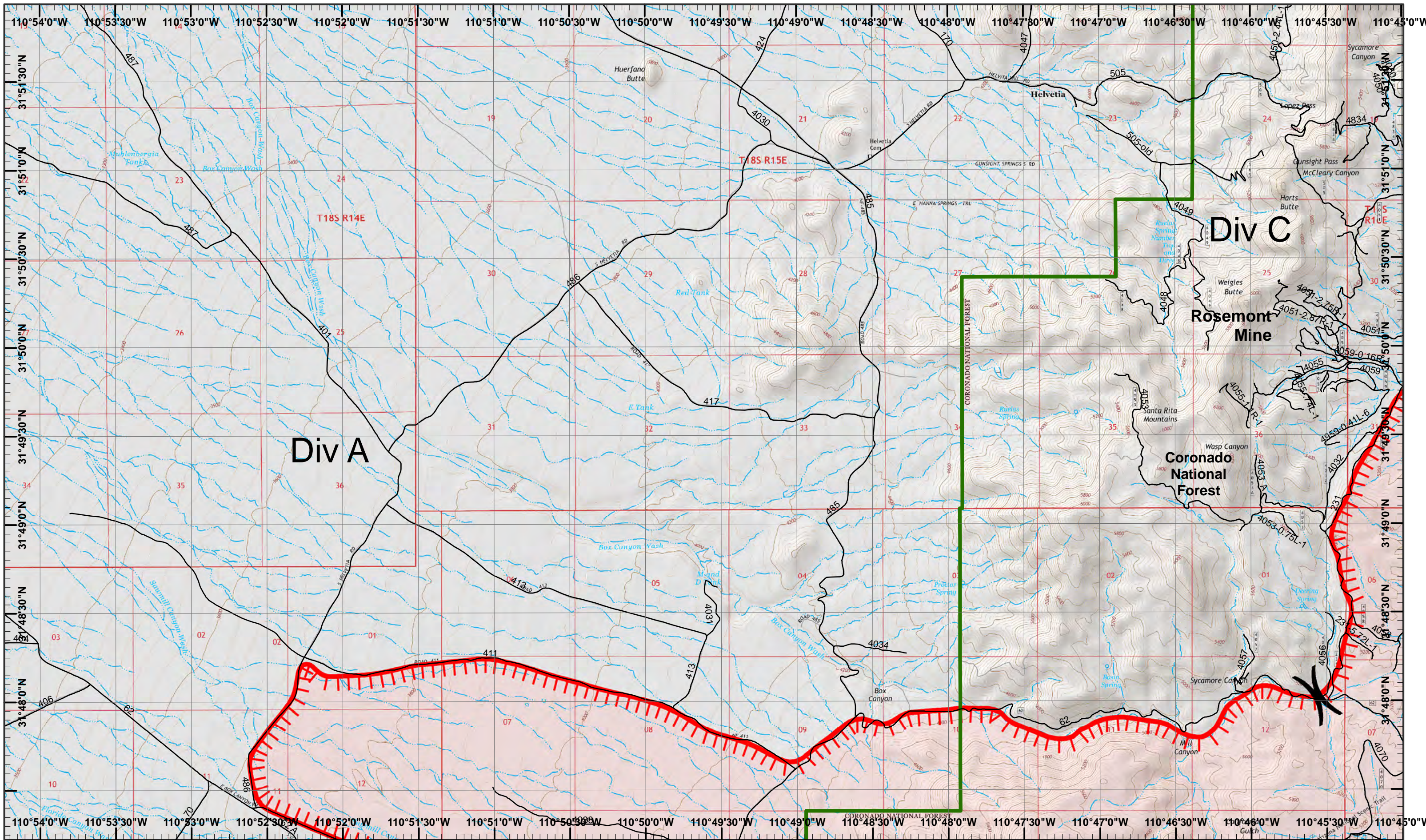
Sawmill Incident Index Map
 GIS Acres 40,628
 4/26/2017 22:00
 Day Operational Period 4/27/2017

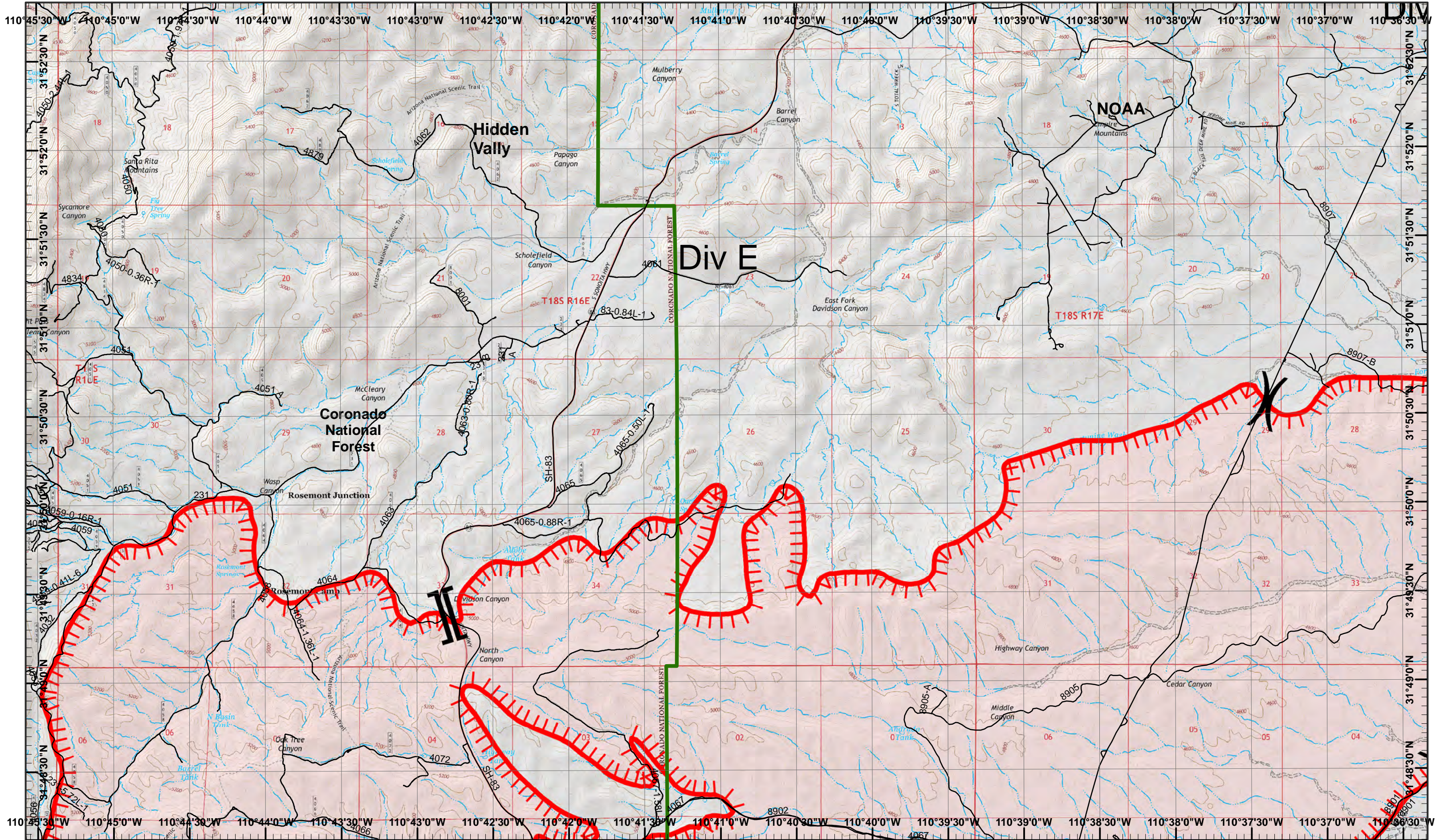


Uncontrolled Fire Edge
 Fire Perimeter

Map Created 4/27/2017 1:01

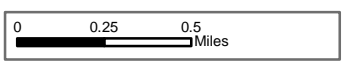
) Division
 || Branch



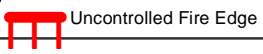


Sawmill Incident
 Day Operational Period 4/27/2017

GIS Acres 40,628
 4/26/2017 22:00



Map Created 4/27/2017 12:59:56 AM RDC



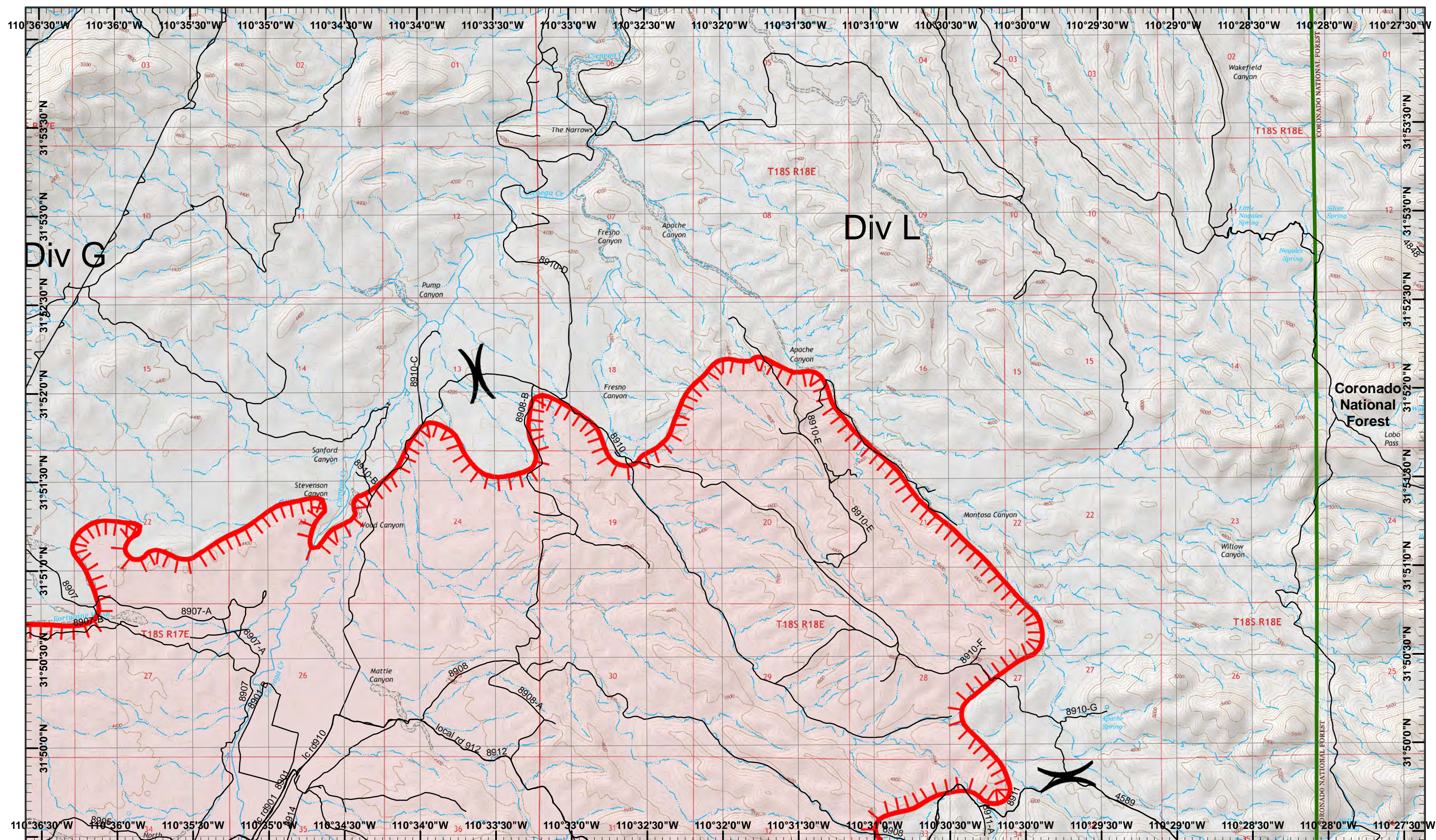
Neighboring Pages

West Page 1	North Page	East Page 3
	South Page 5	

1	2	3
4	5	6

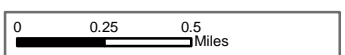
Page 2
)(Division
 || Branch





Sawmill Incident
 Day Operational Period 4/27/2017

GIS Acres 40,628
 4/26/2017 22:00



Map Created 4/27/2017 1:00:04 AM RDC



Uncontrolled Fire Edge

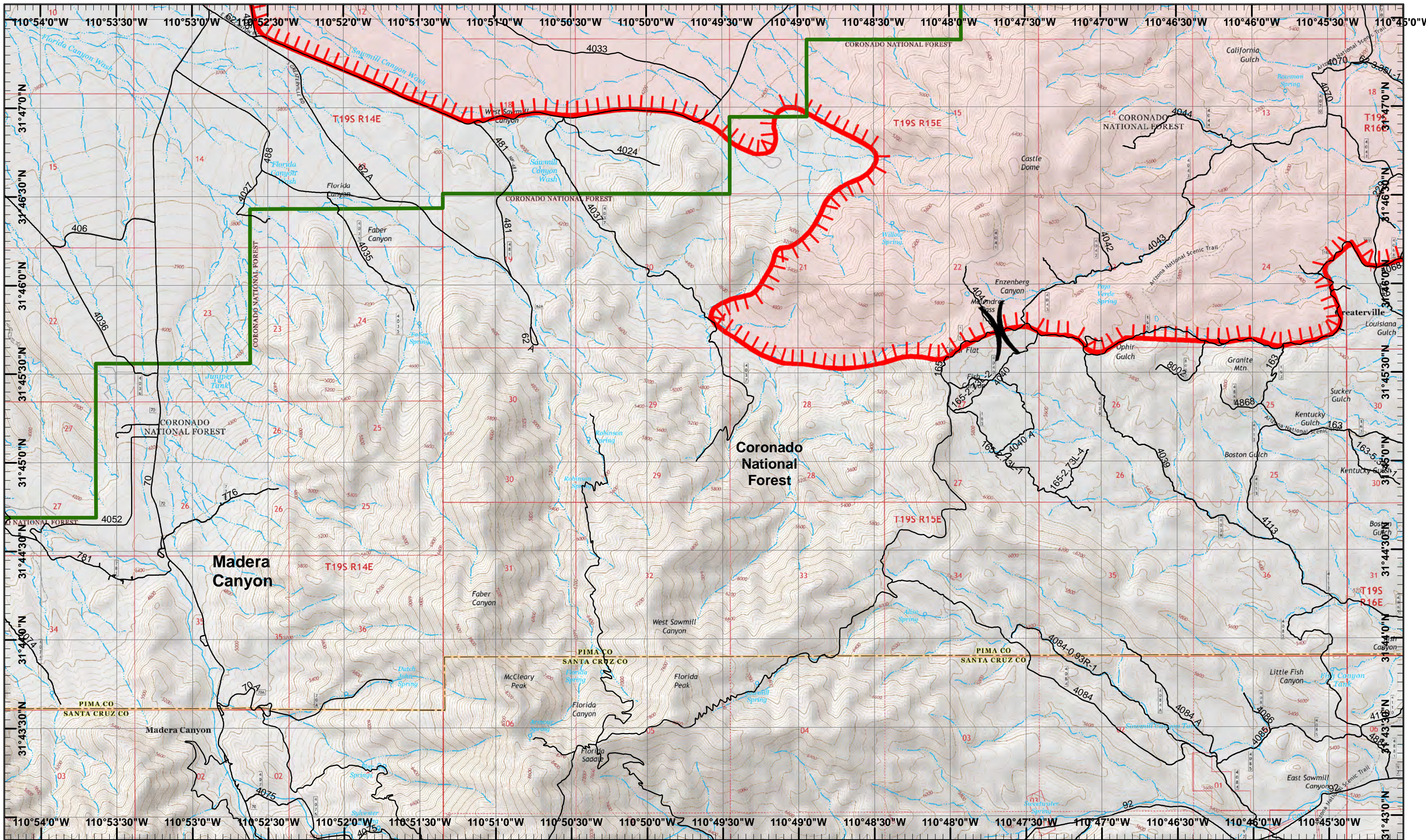
Neighboring Pages

West Page 2	North Page	East Page
	South Page 6	

1	2	3
4	5	6

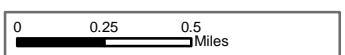
Page 3
)(Division
 || Branch





Sawmill Incident
 Day Operational Period 4/27/2017

GIS Acres 40,628
 4/26/2017 22:00



Map Created 4/27/2017 1:00:12 AM RDC



Uncontrolled Fire Edge

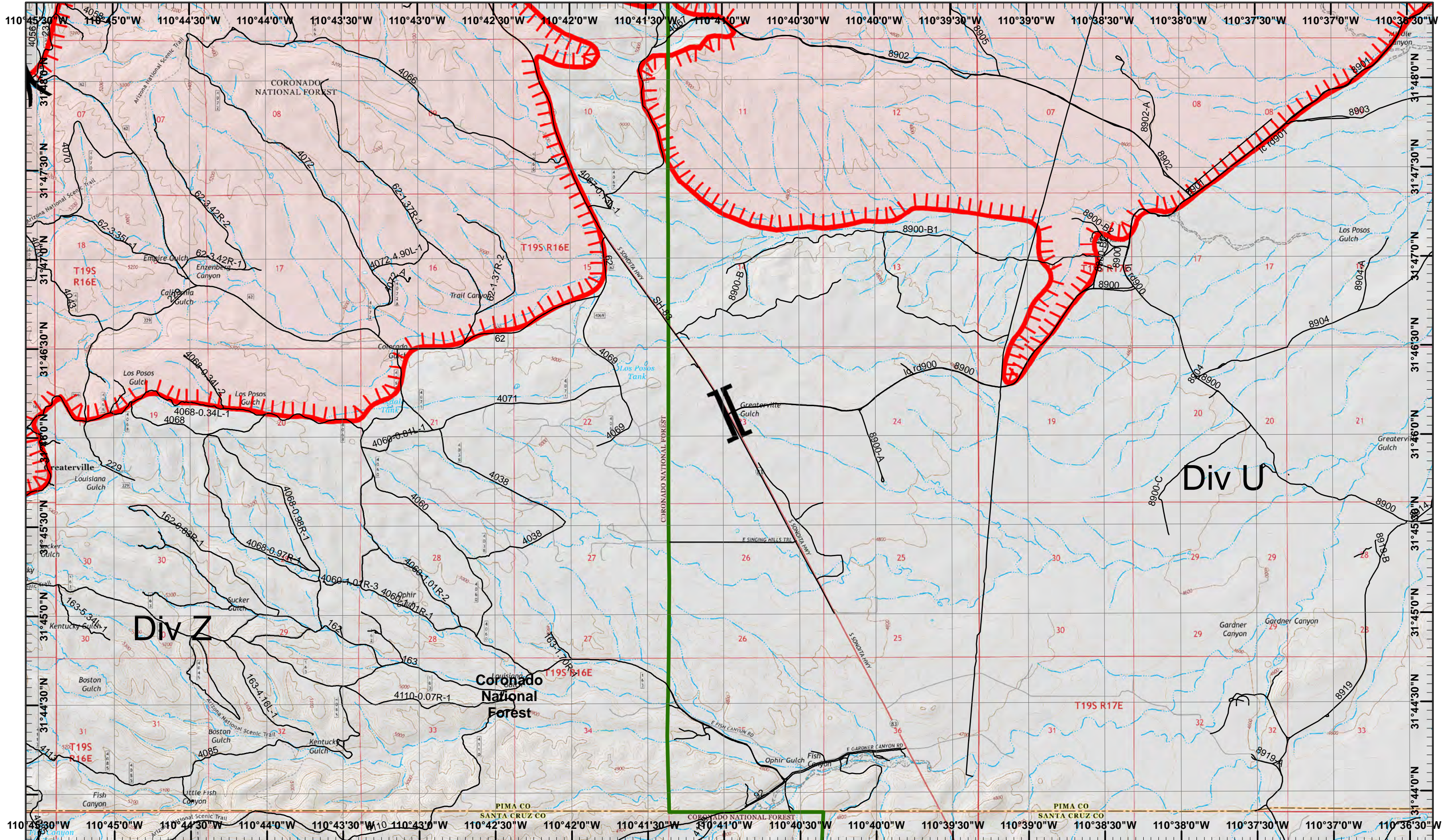
Neighboring Pages

West Page	North Page 1	East Page 5
	South Page	

1	2	3
4	5	6

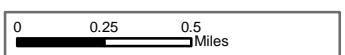
Page 4
)(Division
 || Branch





Sawmill Incident
 Day Operational Period 4/27/2017

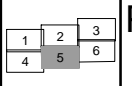
GIS Acres 40,628
 4/26/2017 22:00



Uncontrolled Fire Edge

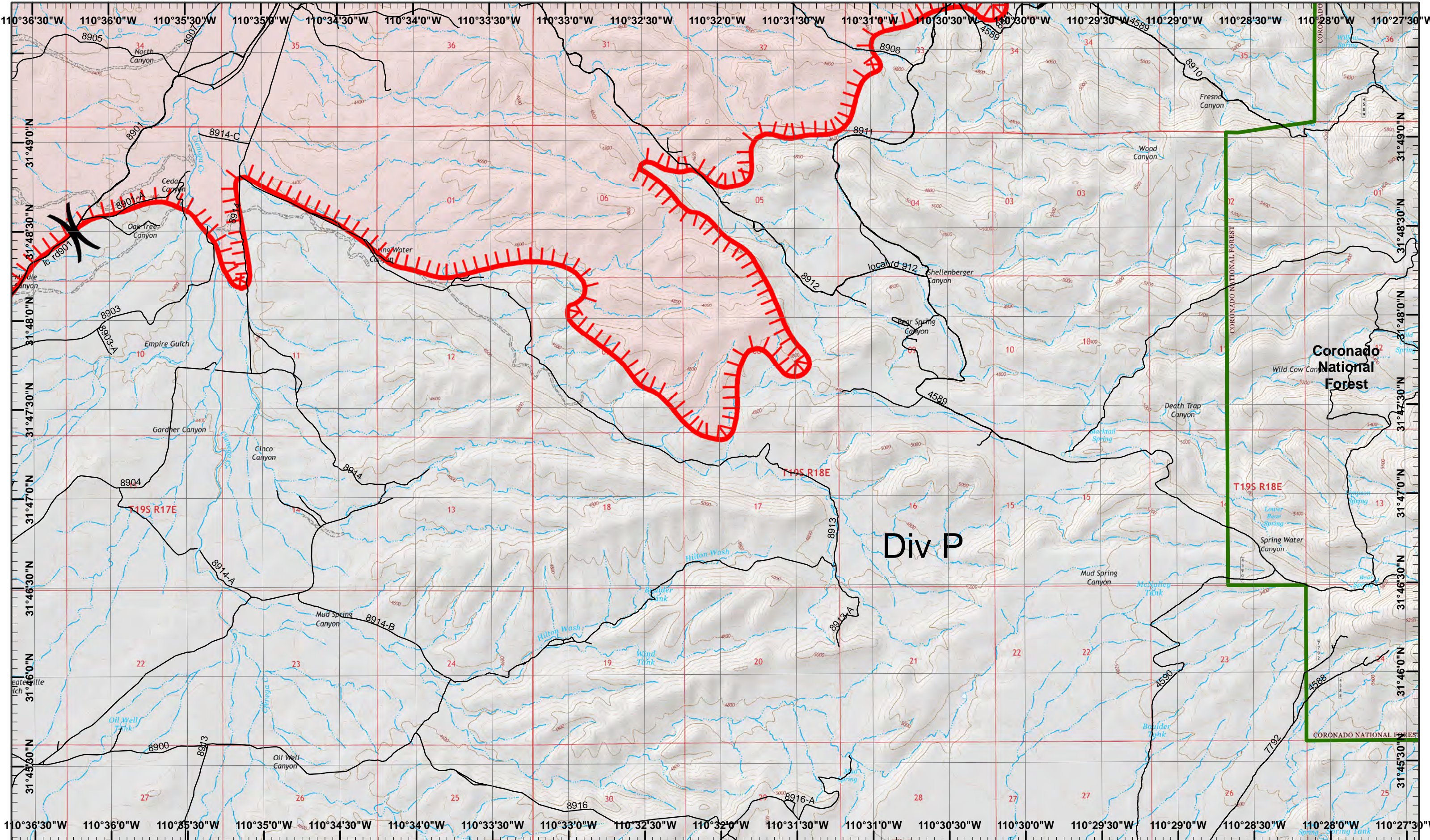
Map Created 4/27/2017 1:00:21 AM RDC

Neighboring Pages
 West Page 4 North Page 2 East Page 6
 South Page



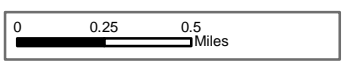
Page 5
)(Division
 || Branch





Sawmill Incident
 Day Operational Period 4/27/2017

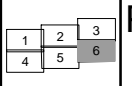
GIS Acres 40,628
 4/26/2017 22:00



Uncontrolled Fire Edge

Map Created 4/27/2017 1:00:30 AM RDC

Neighboring Pages
 West Page 5 North Page 3 East Page
 South Page



Page 6
 Division
 Branch

