

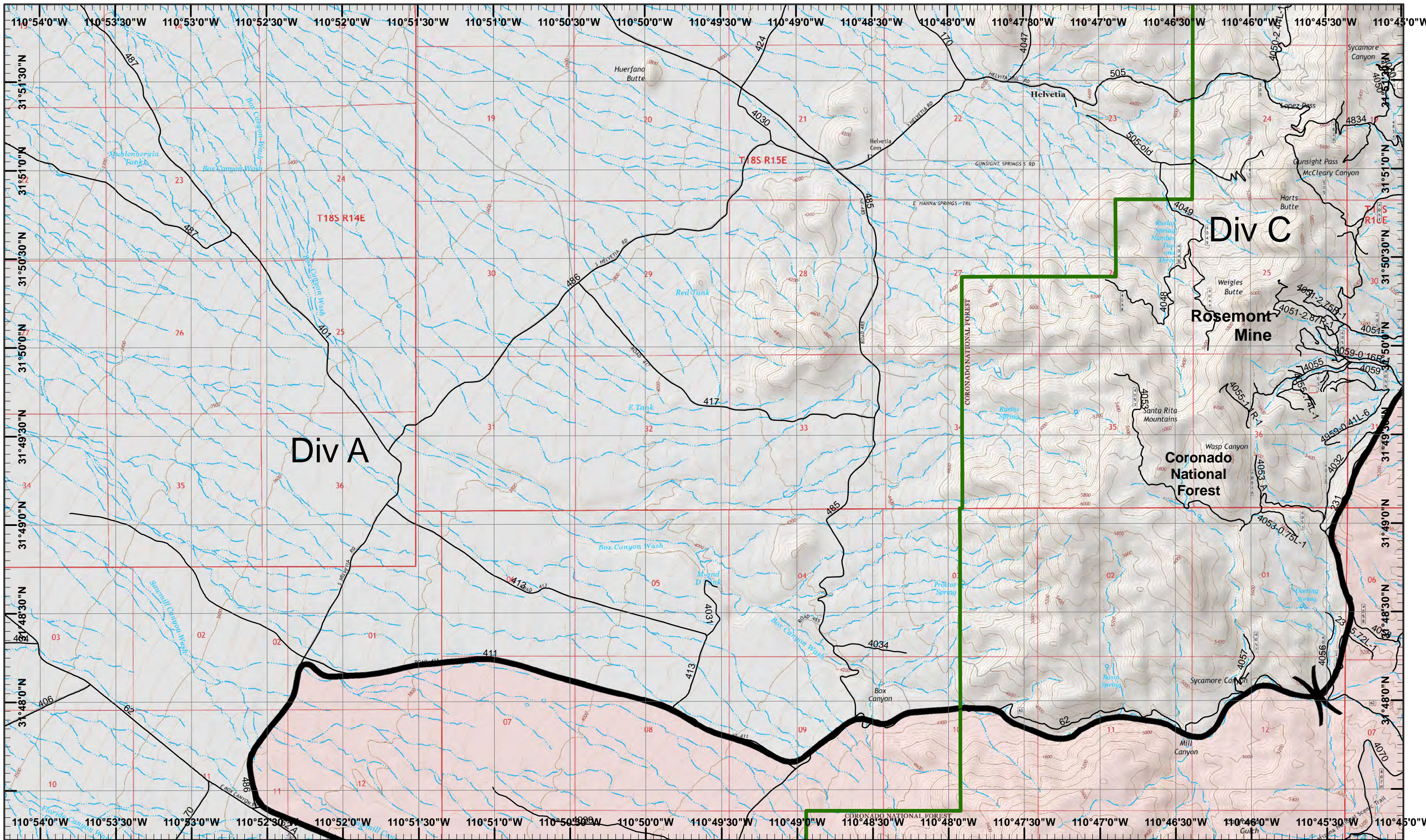
Sawmill Incident Index Map
 GIS Acres 46,954
 4/27/2017 12:00
 Day Operational Period 4/28/2017
 Map Created 4/27/2017 10:04:33 PM RDC

Legend:

- Roads
- Drop Point
- Helibase
- Helispot
- Water Source
- Completed Line
- Uncontrolled Fire Edge
- Fire Perimeter

SWITCH AREA
 INCIDENT MANAGEMENT TEAM

) Division
 || Branch



Div A

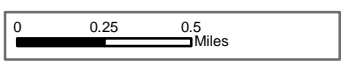
Div C

Rosemont Mine

Coronado National Forest

Sawmill Incident
 Day Operational Period 4/28/2017

GIS Acres 46,954
 4/27/2017 12:00



Map Created 4/27/2017 9:49:15 PM RDC

Completed Line

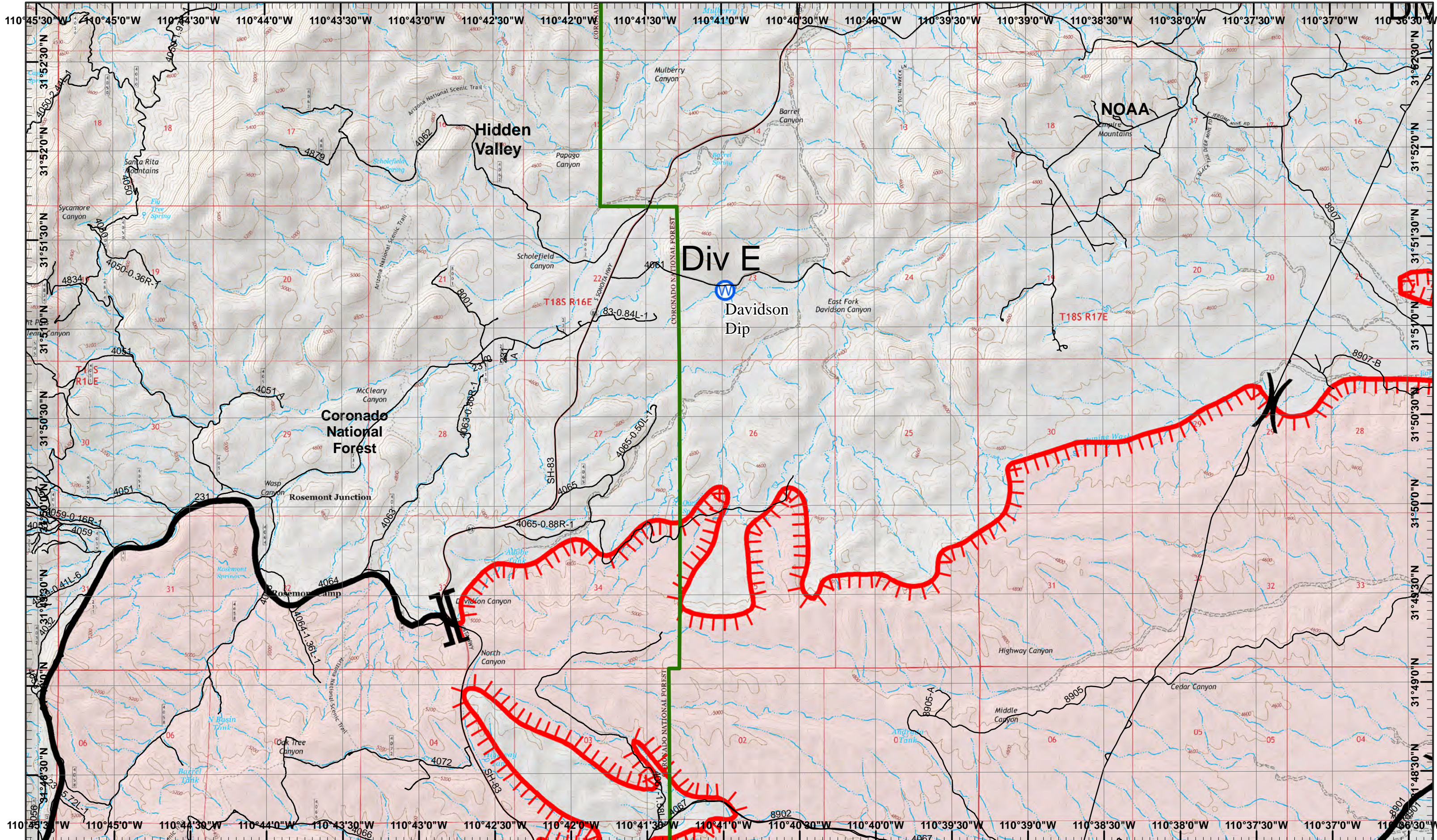
Neighboring Pages

West Page	North Page	East Page 2
	South Page 4	

1	2	3
4	5	6

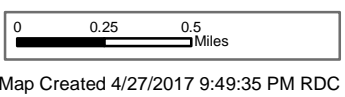
Page 1
)(Division
 || Branch





Sawmill Incident
 Day Operational Period 4/28/2017

GIS Acres 46,954
 4/27/2017 12:00



Water Source
 Completed Line

Uncontrolled Fire Edge

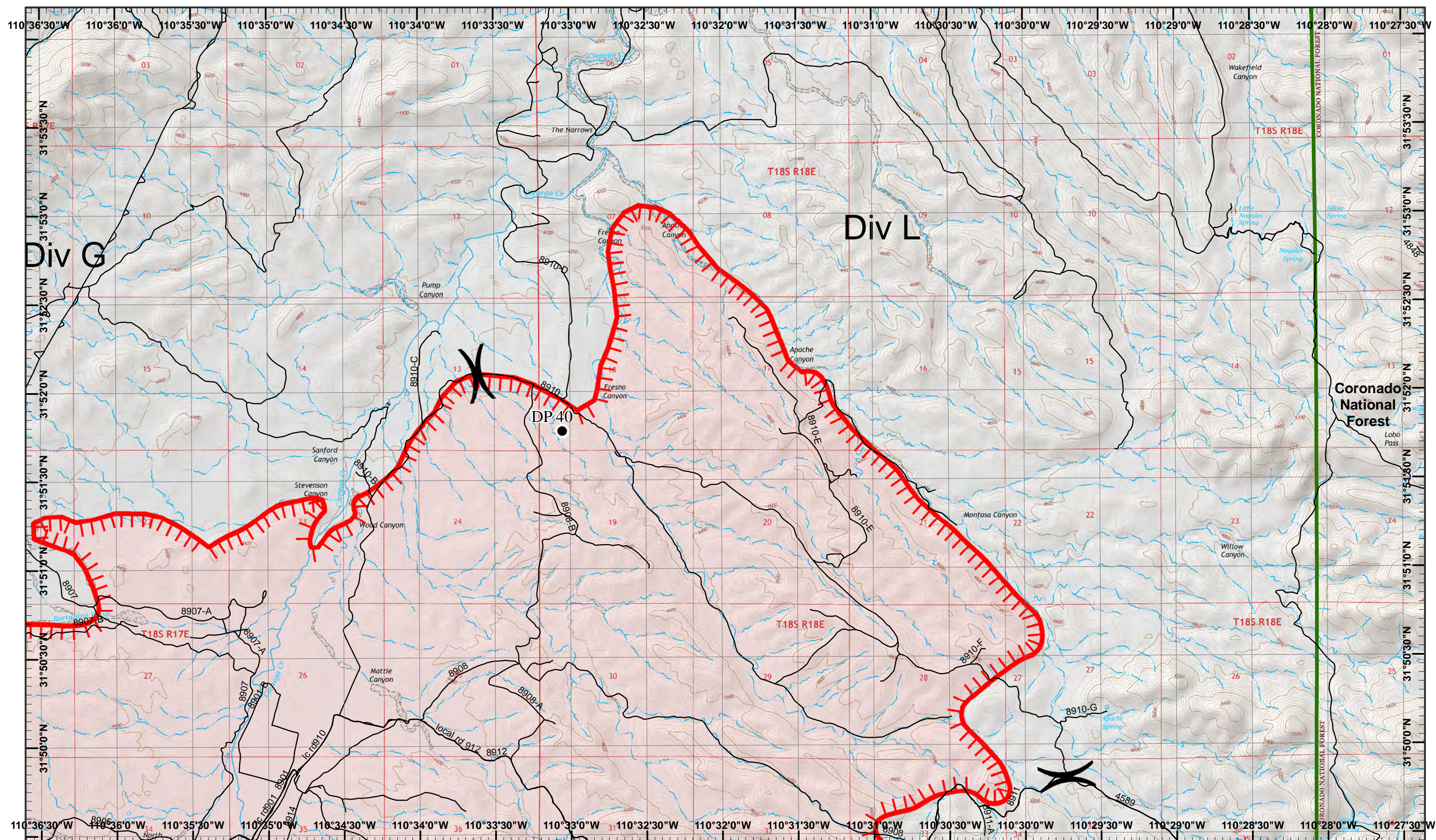
Neighboring Pages

West Page 1	North Page	East Page 3
	South Page 5	

1	2	3
4	5	6

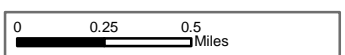
Page 2
)(Division
 || Branch





Sawmill Incident
 Day Operational Period 4/28/2017

GIS Acres 46,954
 4/27/2017 12:00

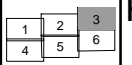


● Drop Point

▬▬▬ Uncontrolled Fire Edge

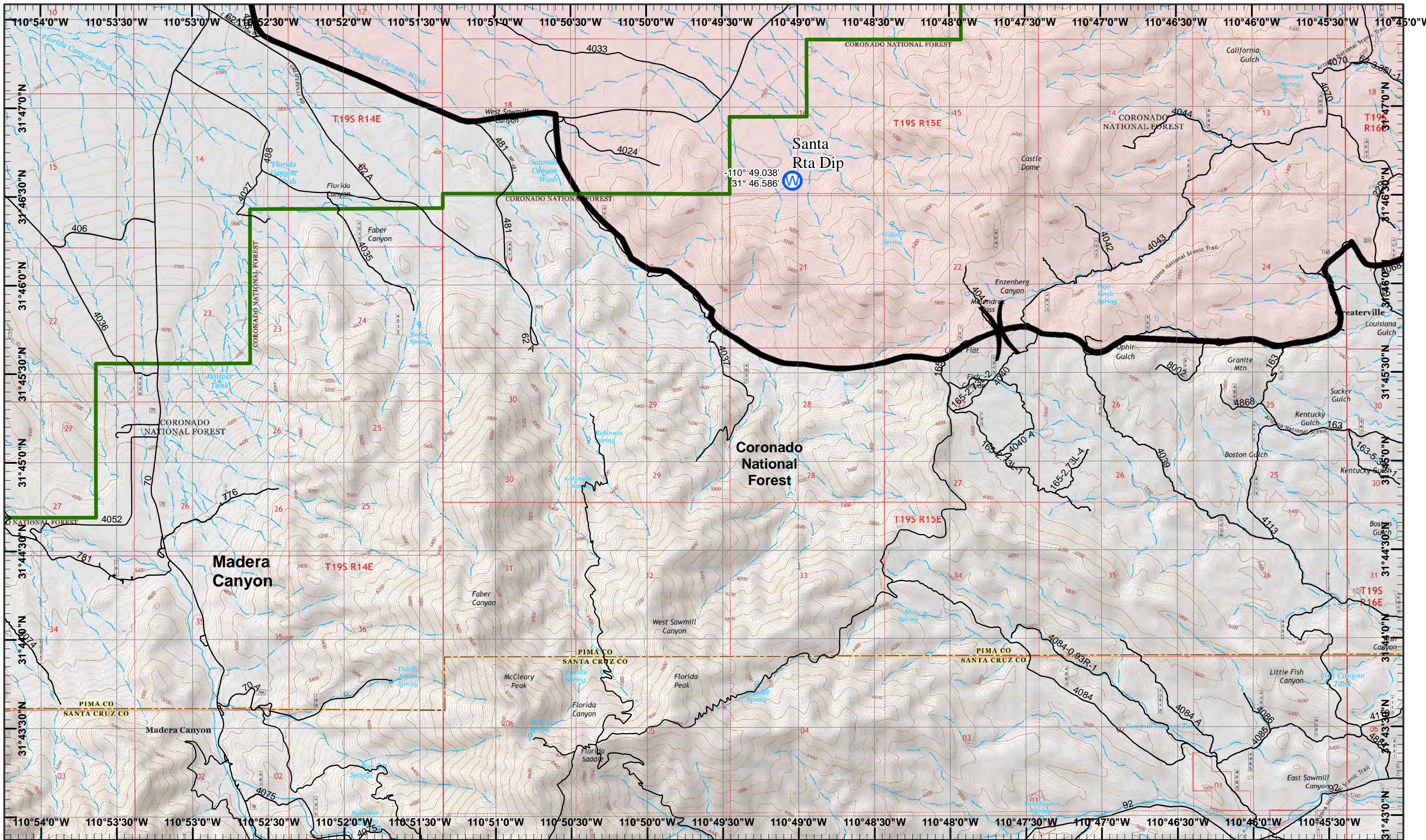
Map Created 4/27/2017 9:49:52 PM RDC

Neighboring Pages
 West Page 2 North Page
 South Page 6 East Page



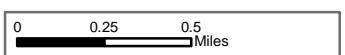
Page 3
)(Division
 || Branch





Sawmill Incident
 Day Operational Period 4/28/2017

GIS Acres 46,954
 4/27/2017 12:00



Map Created 4/27/2017 9:50:08 PM RDC



Water Source

Completed Line

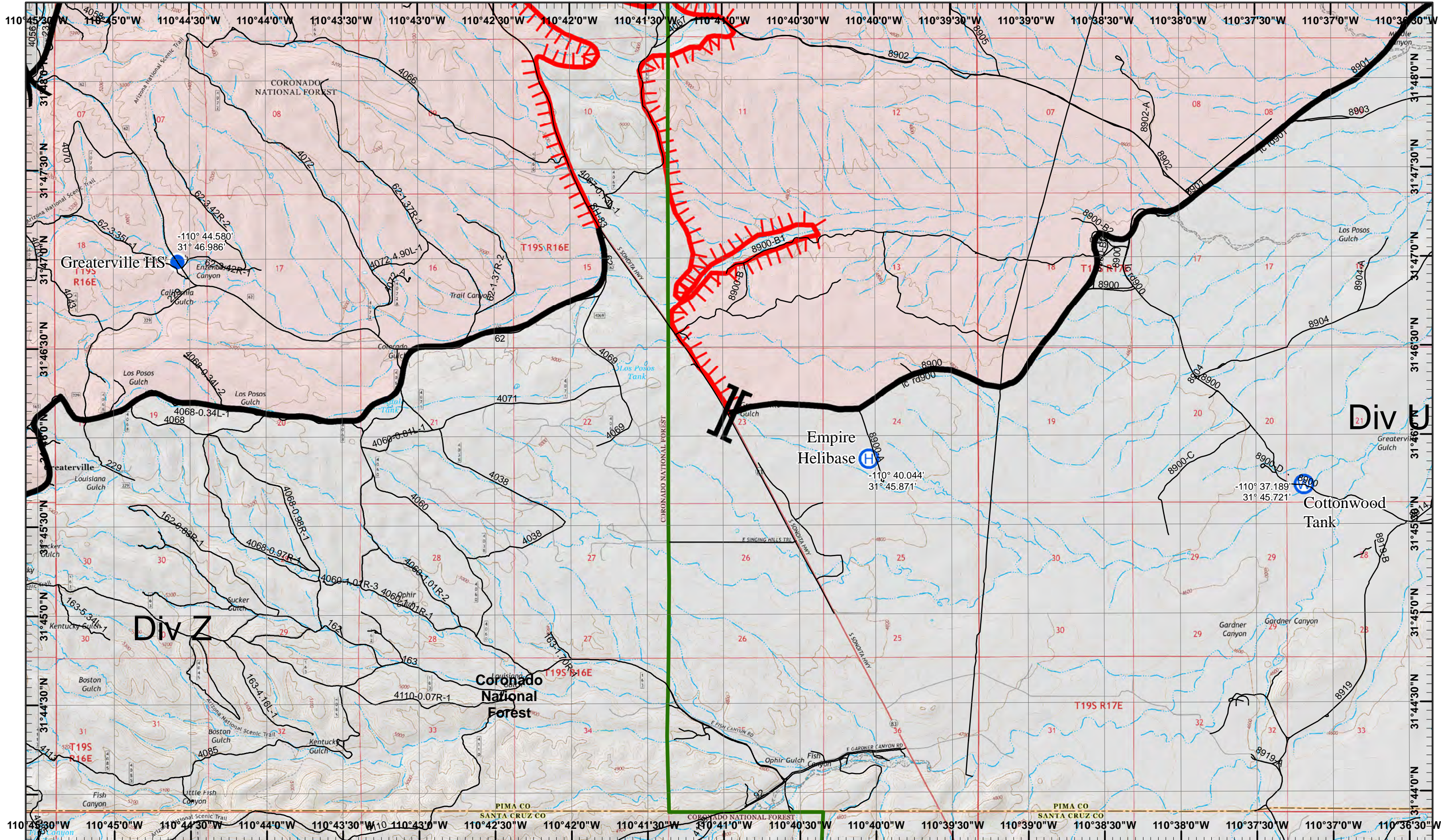
Neighboring Pages

West Page	North Page 1	East Page 5
	South Page	

1	2	3
4	5	6

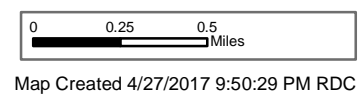
Page 4
)(Division
 || Branch





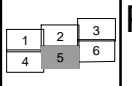
Sawmill Incident
 Day Operational Period 4/28/2017

GIS Acres 46,954
 4/27/2017 12:00



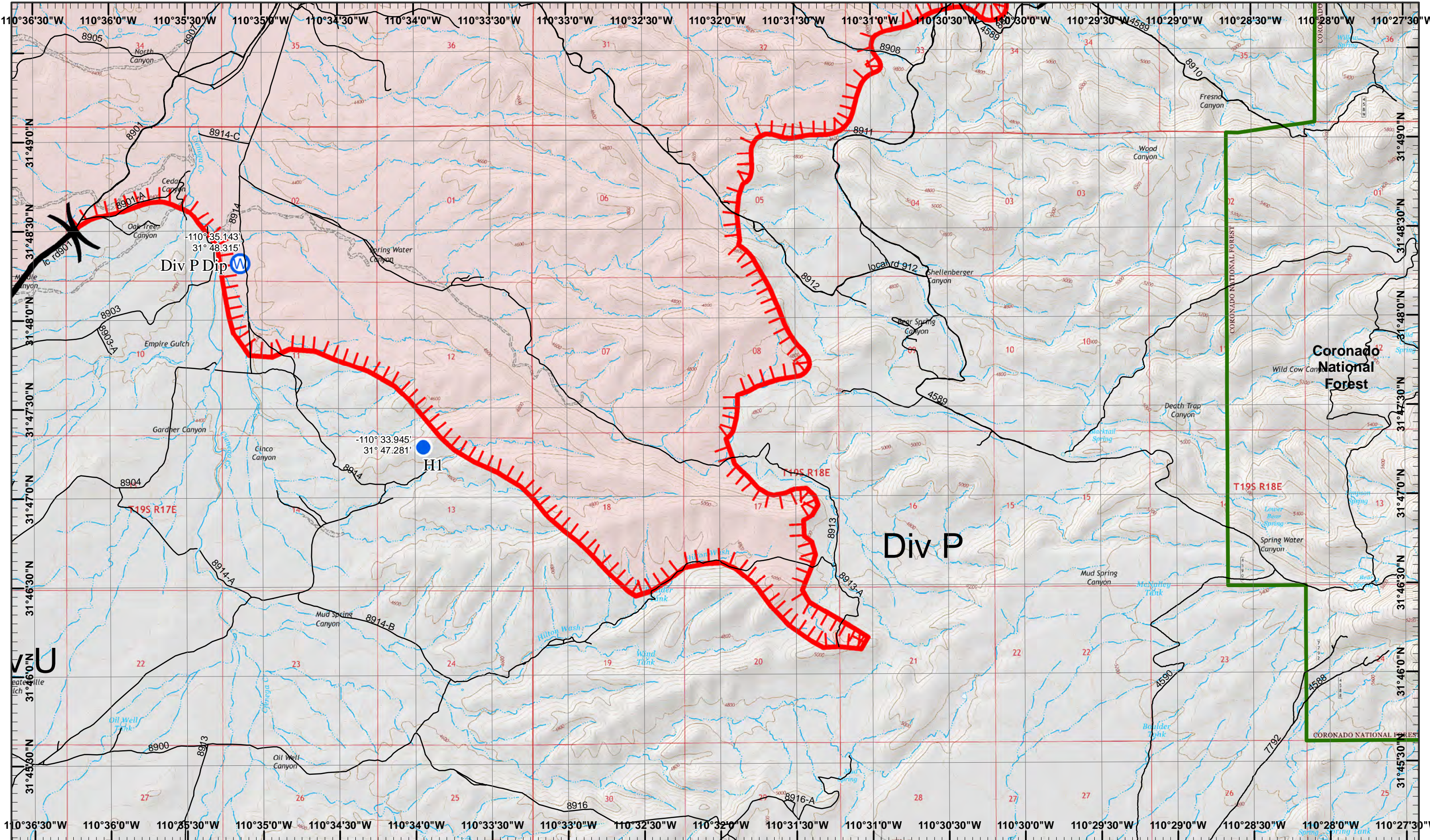
- North
- Helibase
- Helispot
- Water Source
- Uncontrolled Fire Edge
- Completed Line

Neighboring Pages
 West Page 4 North Page 2
 South Page East Page 6

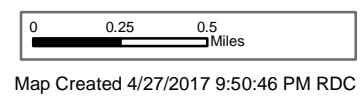


Page 5
)(Division
 || Branch





GIS Acres 46,954
 4/27/2017 12:00



Helispot
 Water Source
 Uncontrolled Fire Edge
 Completed Line

Neighboring Pages

West Page 5	North Page 3	East Page
	South Page	

1	2	3
4	5	6

