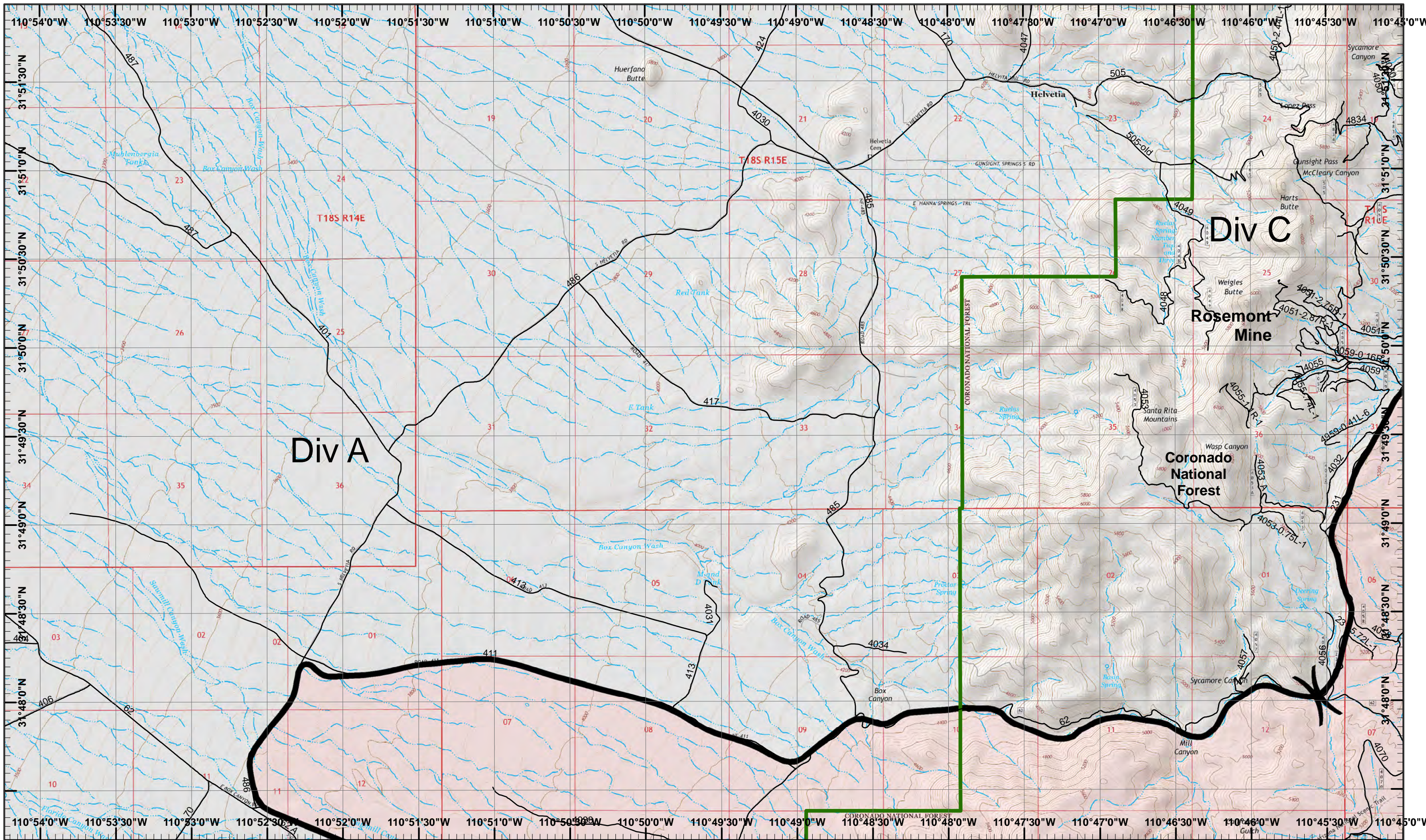


**Sawmill Incident Index Map**  
 GIS Acres 46,991  
 4/28/2017 06:45  
 Day Operational Period 4/29/2017  
 Map Created 4/28/2017 8:03:54 PM RDC

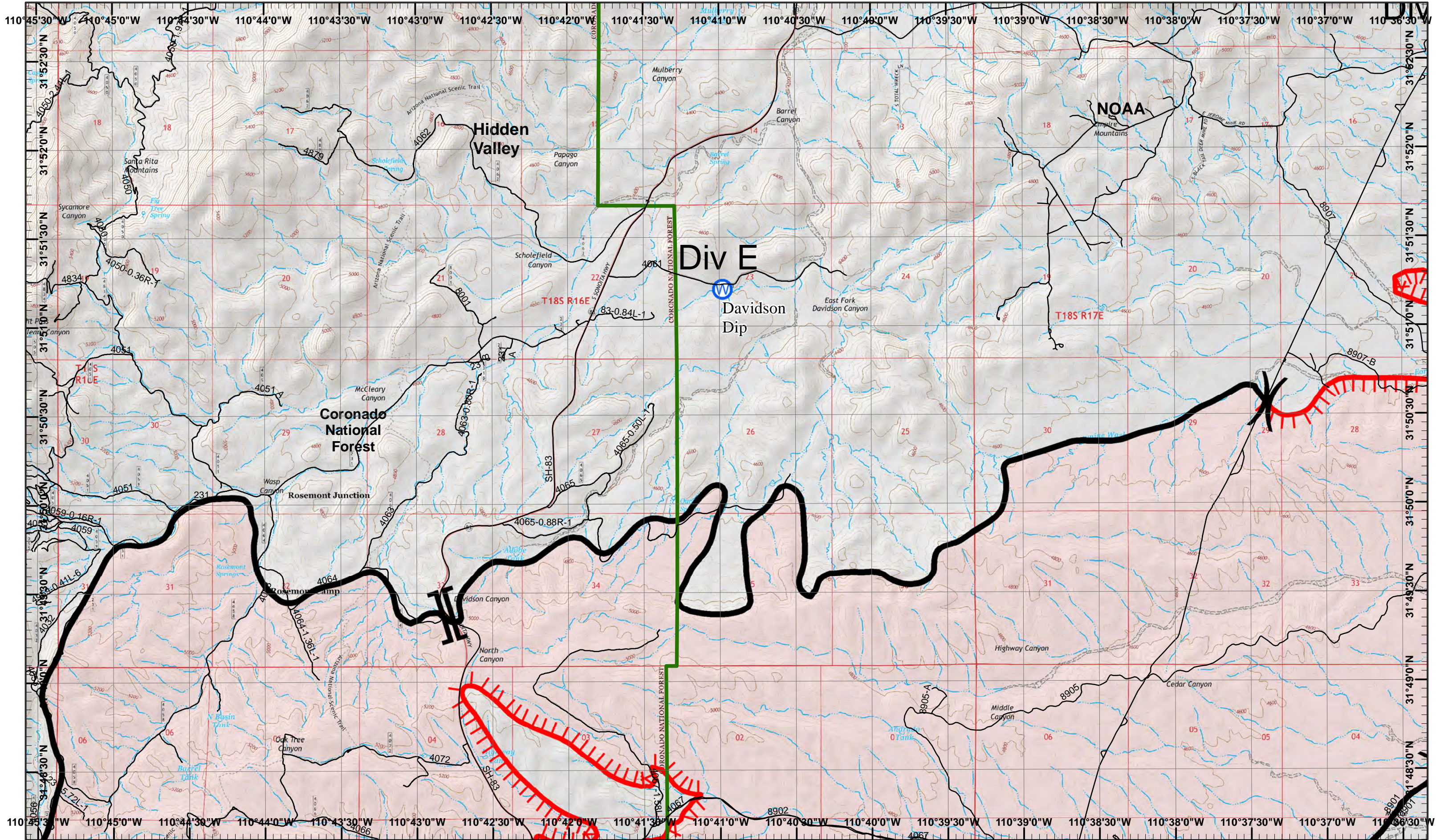
- North Arrow
- Roads
- Drop Point
- Fire Origin
- Helibase
- Helispot
- Repeater
- Water Source
- Completed Line
- Uncontrolled Fire Edge
- Fire Perimeter

) Division  
 || Branch



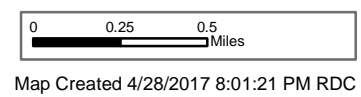






**Sawmill Incident**  
 Day Operational Period 4/29/2017

GIS Acres 46,991  
 4/28/2017 06:45



Water Source
 Uncontrolled Fire Edge

Completed Line

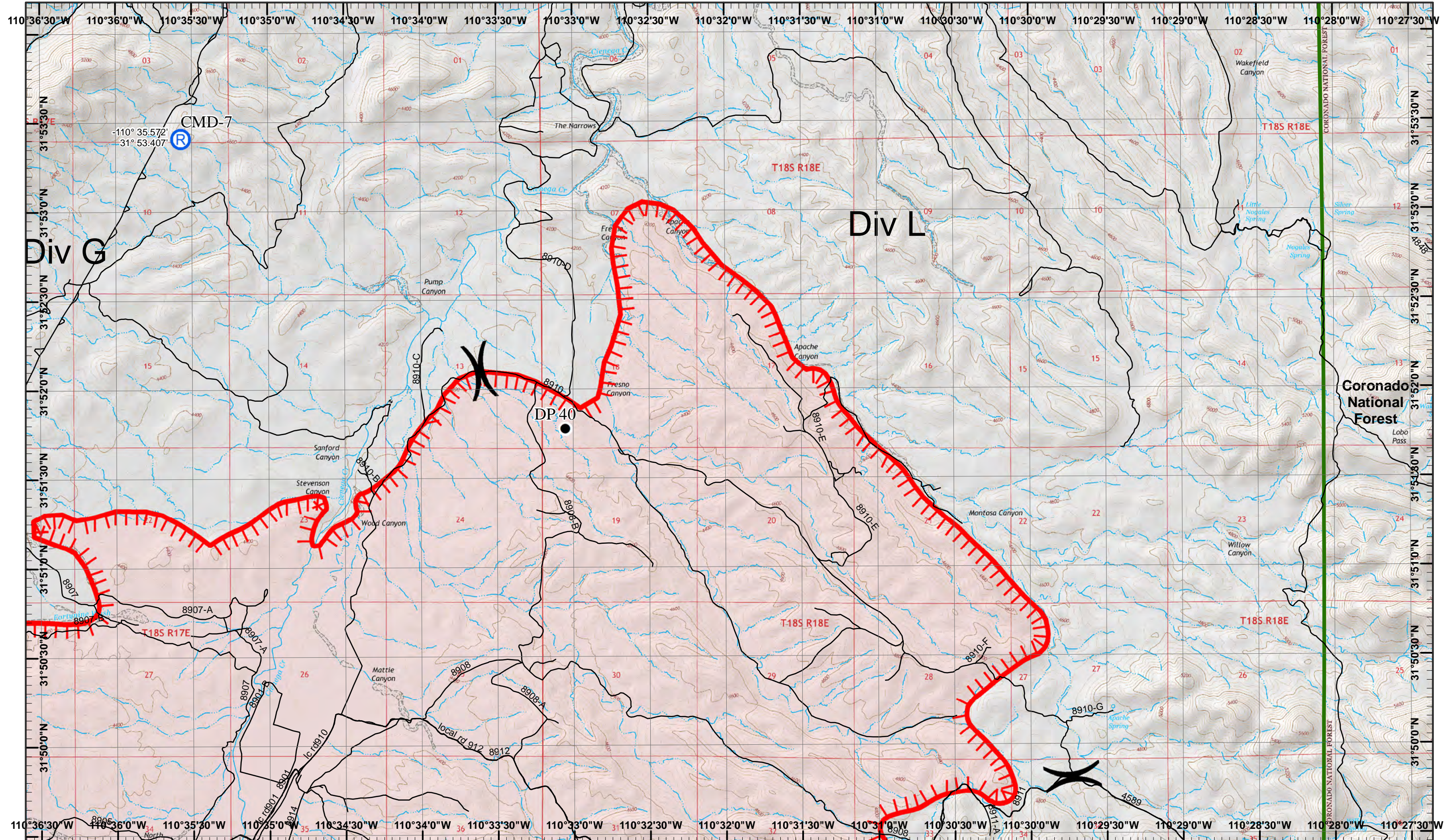
Neighboring Pages

West Page 1	North Page	East Page 3
	South Page 5	

1	2	3
4	5	6

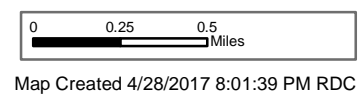
Page 2  
 )( Division  
 || Branch





**Sawmill Incident**  
 Day Operational Period 4/29/2017

GIS Acres 46,991  
 4/28/2017 06:45



North  
 Drop Point  
 Repeater  
 Uncontrolled Fire Edge

Neighboring Pages

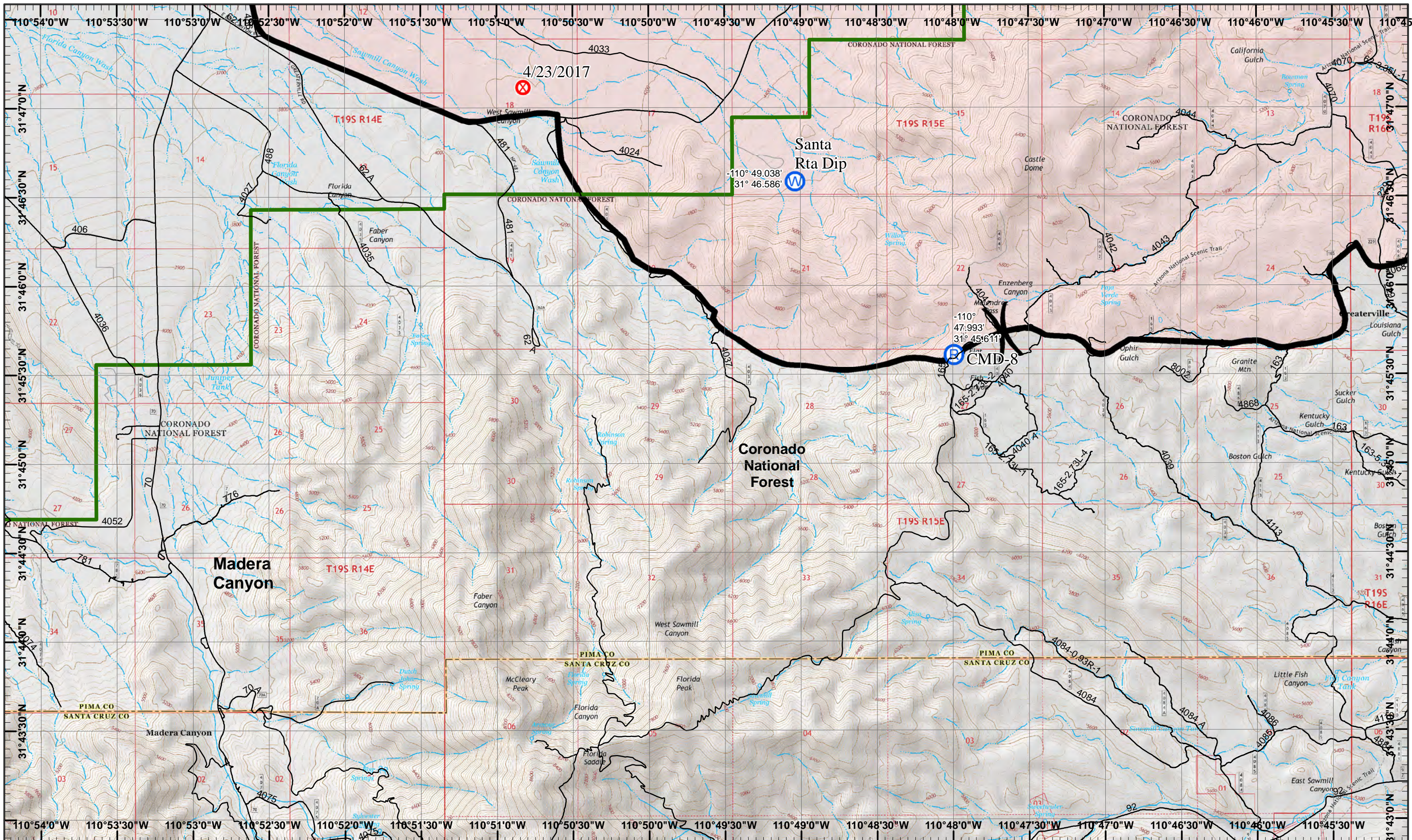
West Page 2	North Page	East Page
	South Page 6	

1	2	3
4	5	6

Page 3  
 )( Division  
 || Branch

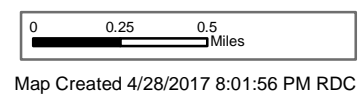






**Sawmill Incident**  
 Day Operational Period 4/29/2017

GIS Acres 46,991  
 4/28/2017 06:45



- North
- Fire Origin
- Water Source
- Repeater
- Completed Line

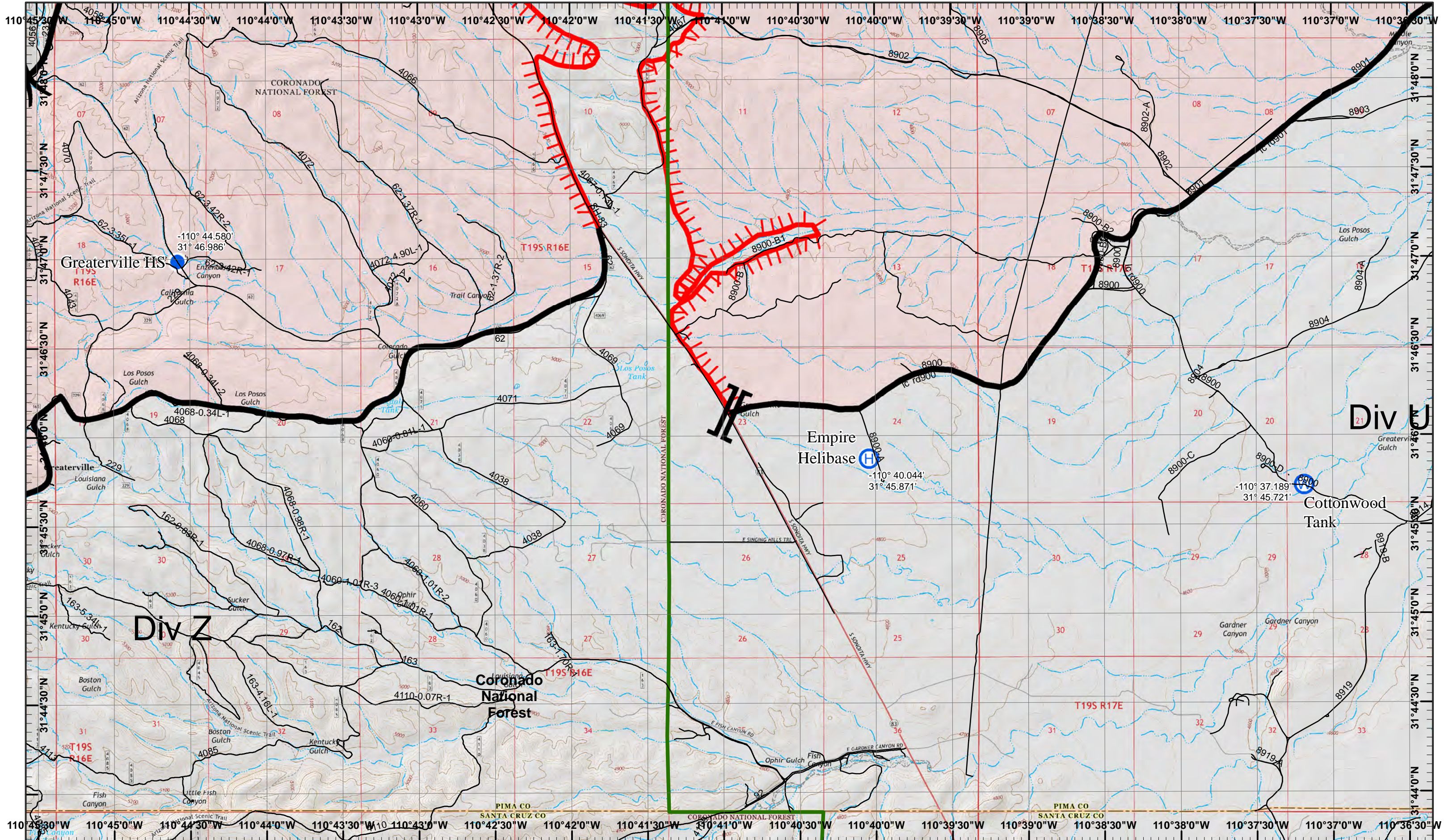
Neighboring Pages

West Page	North Page 1	East Page 5
	South Page	

1	2	3
4	5	6

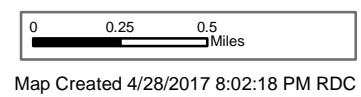
Page 4  
 )( Division  
 || Branch





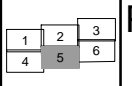
**Sawmill Incident**  
 Day Operational Period 4/29/2017

GIS Acres 46,991  
 4/28/2017 06:45



- North
- Helibase
- Helispot
- Water Source
- Uncontrolled Fire Edge
- Completed Line

Neighboring Pages  
 West Page 4    North Page 2  
                   South Page    East Page 6



**Page 5**  
 )( Division  
 || Branch





