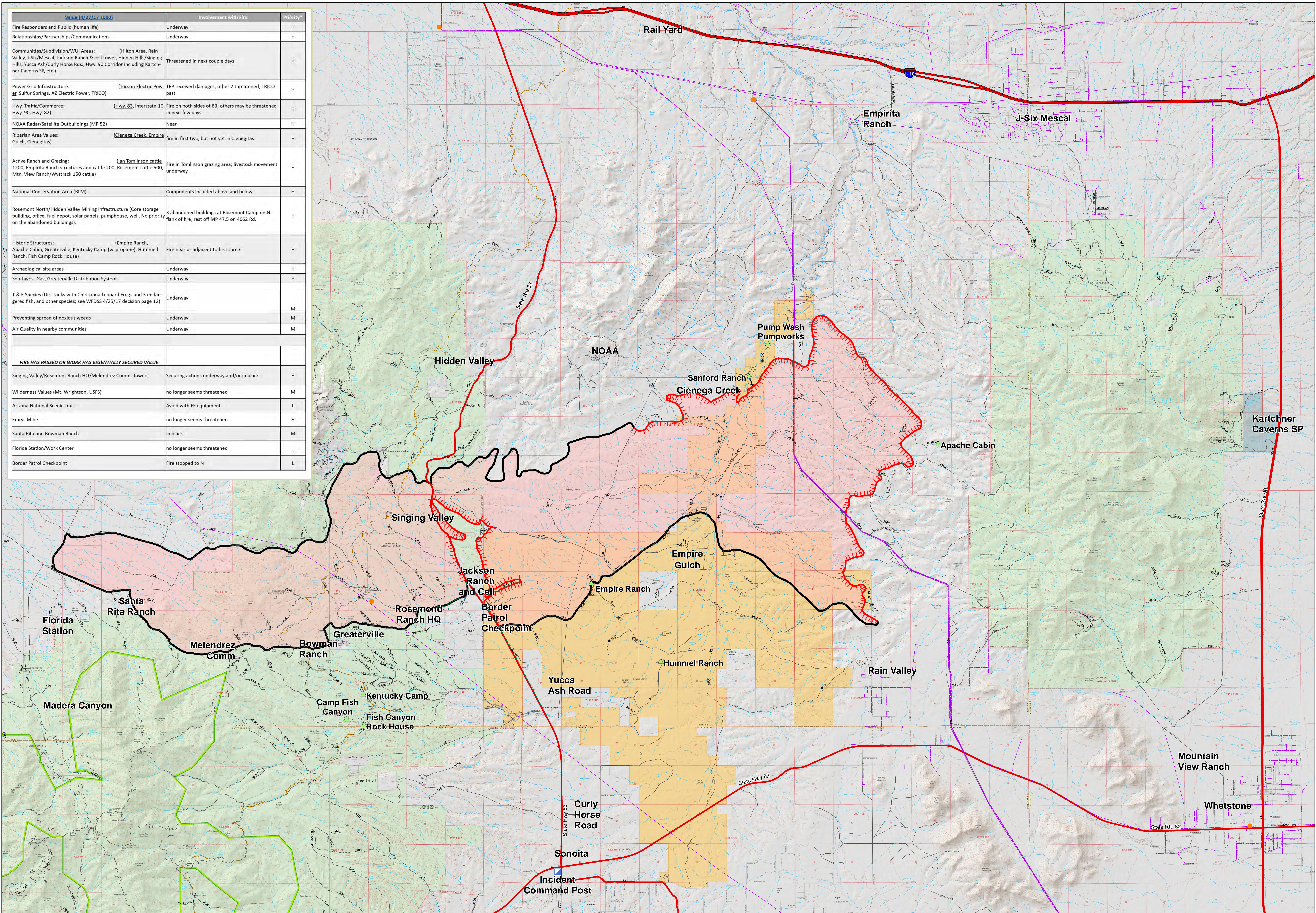
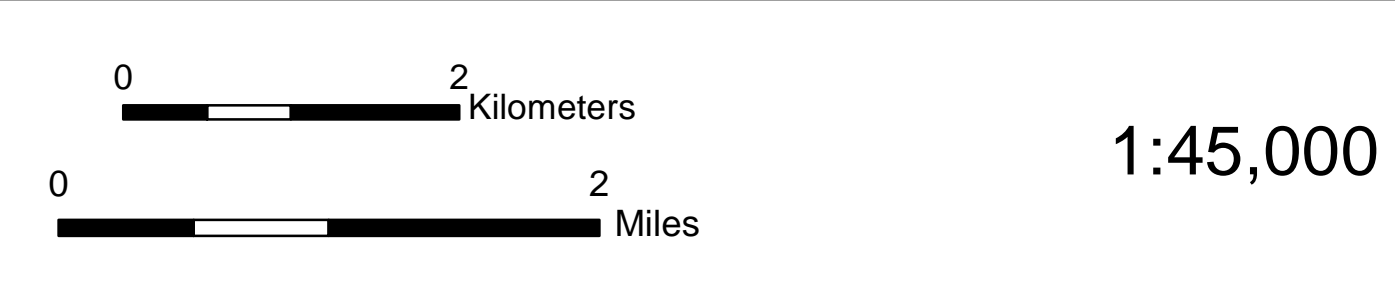


Value (4/27/17 1000)	Involvement with fire	Priority*
Fire Responders and Public (human life)	Underway	H
Relationships/Partnerships/Communications	Underway	H
Communities/Subdivision/WUI Areas: (Hilton Area, Rain Valley, J-Six/Mescal, Jackson Ranch & cell tower, Hidden Hills/Singing Hills, Yucca Ash/Curly Horse Rds., Hwy. 90 Corridor including Kartchner Caverns SP, etc.)	Threatened in next couple days	H
Power Grid Infrastructure: (Tucson Electric Power, Sulfur Springs, AZ Electric Power, TRICO)	TEP received damages, other 2 threatened, TRICO past	H
Hwy. Traffic/Commerce: (Hwy. 83, Interstate-10, Hwy. 90, Hwy. 82)	Fire on both sides of 83, others may be threatened in next few days	H
NOAA Radar/Satellite Outbuildings (MP 52)	Near	H
Riparian Area Values: (Cienega Creek, Empire Gulch, Cienegitas)	Fire in first two, but not yet in Cienegitas	H
Active Ranch and Grazing: (Ian Tomlinson cattle 1200, Empirita Ranch structures and cattle 200, Rosemont cattle 500, Mtn. View Ranch/Wystrack 150 cattle)	Fire in Tomlinson grazing area; livestock movement underway	H
National Conservation Area (BLM)	Components included above and below	H
Rosemont North/Hidden Valley Mining Infrastructure (Core storage building, office, fuel depot, solar panels, pumphouse, well. No priority on the abandoned buildings).	3 abandoned buildings at Rosemont Camp on N. flank of fire, rest off MP 47.5 on 4062 Rd.	H
Historic Structures: (Empire Ranch, Apache Cabin, Greaterville, Kentucky Camp (w. propane), Hummel Ranch, Fish Camp Rock House)	Fire near or adjacent to first three	H
Archeological site areas	Underway	H
Southwest Gas, Greaterville Distribution System	Underway	H
T & E Species (Dirt tanks with Chiricahua Leopard Frogs and 3 endangered fish, and other species; see WFDSS 4/25/17 decision page 12)	Underway	M
Preventing spread of noxious weeds	Underway	M
Air Quality in nearby communities	Underway	M
FIRE HAS PASSED OR WORK HAS ESSENTIALLY SECURED VALLE		
Singing Valley/Rosemont Ranch HQ/Melendrez Comm. Towers	Securing actions underway and/or in black	H
Wilderness Values (Mt. Wrightson, USFS)	no longer seems threatened	M
Arizona National Scenic Trail	Avoid with FF equipment	L
Emrys Mine	no longer seems threatened	H
Santa Rita and Bowman Ranch	in black	M
Florida Station/Work Center	no longer seems threatened	H
Border Patrol Checkpoint	Fire stopped to N	L



Sawmill Fire - Values At Risk
AZ-A3S-002926
 Day Operational Period 4/29/2017

GIS Acres 46,991
 4/28/2017 06:45
 NAD 1983 UTM Zone 12N
 Map Created: 4/28/2017, 8:43:46 PM, M. Landis



- ▲ Cultural Resource
- Substation
- - - Gas Mainline
- - - Power Line
- = Interstate
- = State Highway
- = Other Road
- = Arizona Trail
- = Completed Line
- = Uncontrolled Fire Edge
- = Fire Perimeter
- = National Wilderness Area
- = BLM Conservation Area
- = Local or State Parks
- = USFS

