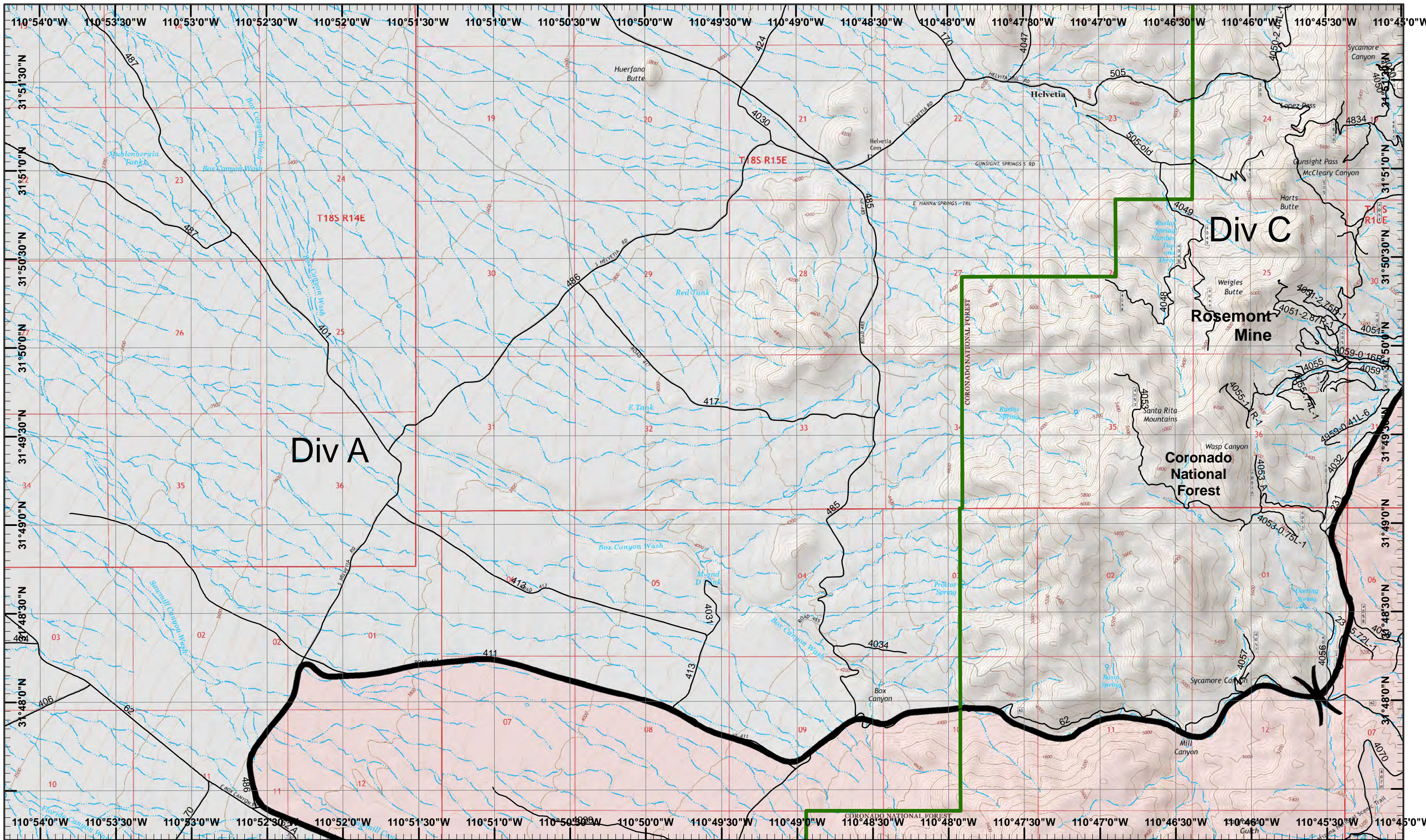


Sawmill Incident Index Map
 GIS Acres 46,991
 4/28/2017 06:45
 Day Operational Period 5/1/2017
 Map Created 4/30/2017 7:57:39 PM RDC

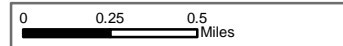
- Substation
- Gas Mainline
- Power Line
- Roads
- Drop Point
- Fire Origin
- Helibase
- Helispot
- Repeater
- Water Source
- Completed Line
- Uncontrolled Fire Edge
- Fire Perimeter

) Division
 [] Branch



Sawmill Incident

GIS Acres 46,991
4/28/2017 06:45



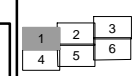
Map Created 4/30/2017 7:47:09 PM RDC



Completed Line

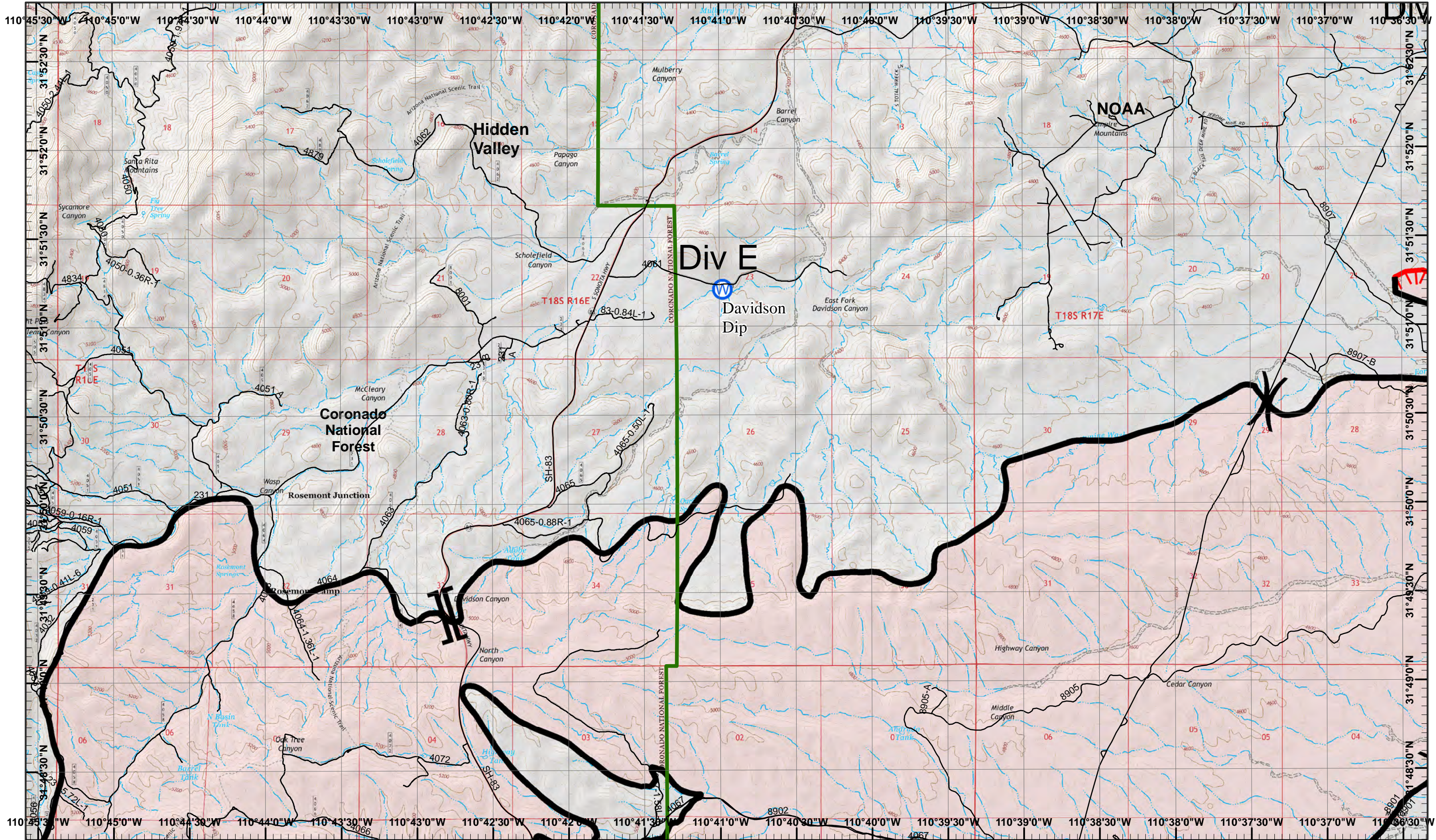
Neighboring Pages

West Page North Page East Page 2
South Page 4



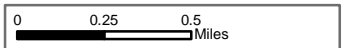
Page 1
)(Division
|| Branch





Sawmill Incident
 Day Operational Period 5/1/2017

GIS Acres 46,991
 4/28/2017 06:45



Map Created 4/30/2017 7:47:28 PM RDC



Water Source



Uncontrolled Fire Edge



Completed Line

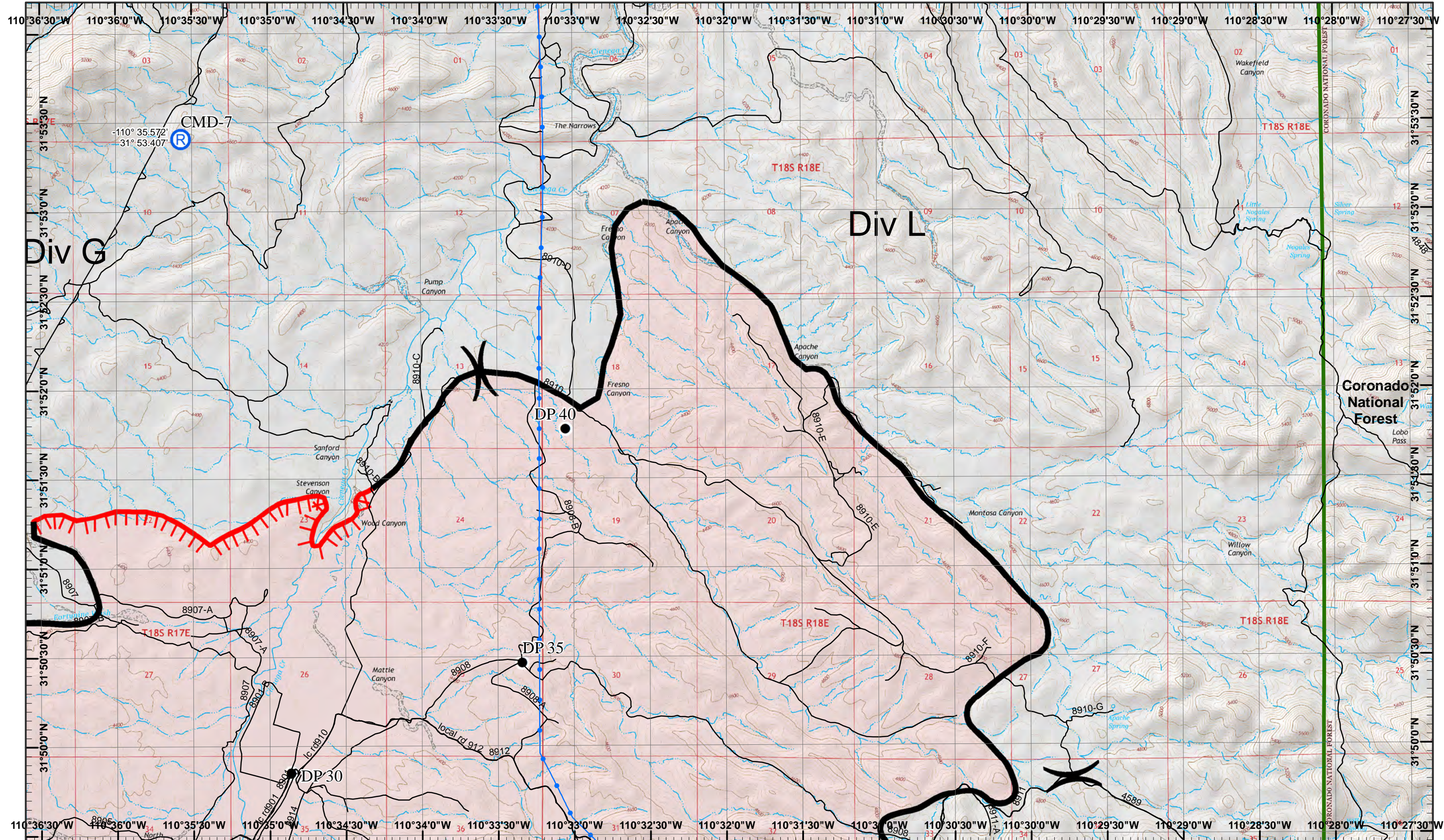
Neighboring Pages

West Page 1	North Page	East Page 3
	South Page 5	

1	2	3
4	5	6

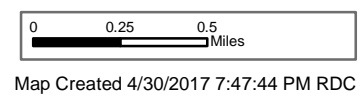
Page 2
)(Division
 || Branch





Sawmill Incident
 Day Operational Period 5/1/2017

GIS Acres 46,991
 4/28/2017 06:45



North
 Drop Point
 Completed Line
 Repeater
 Uncontrolled Fire Edge

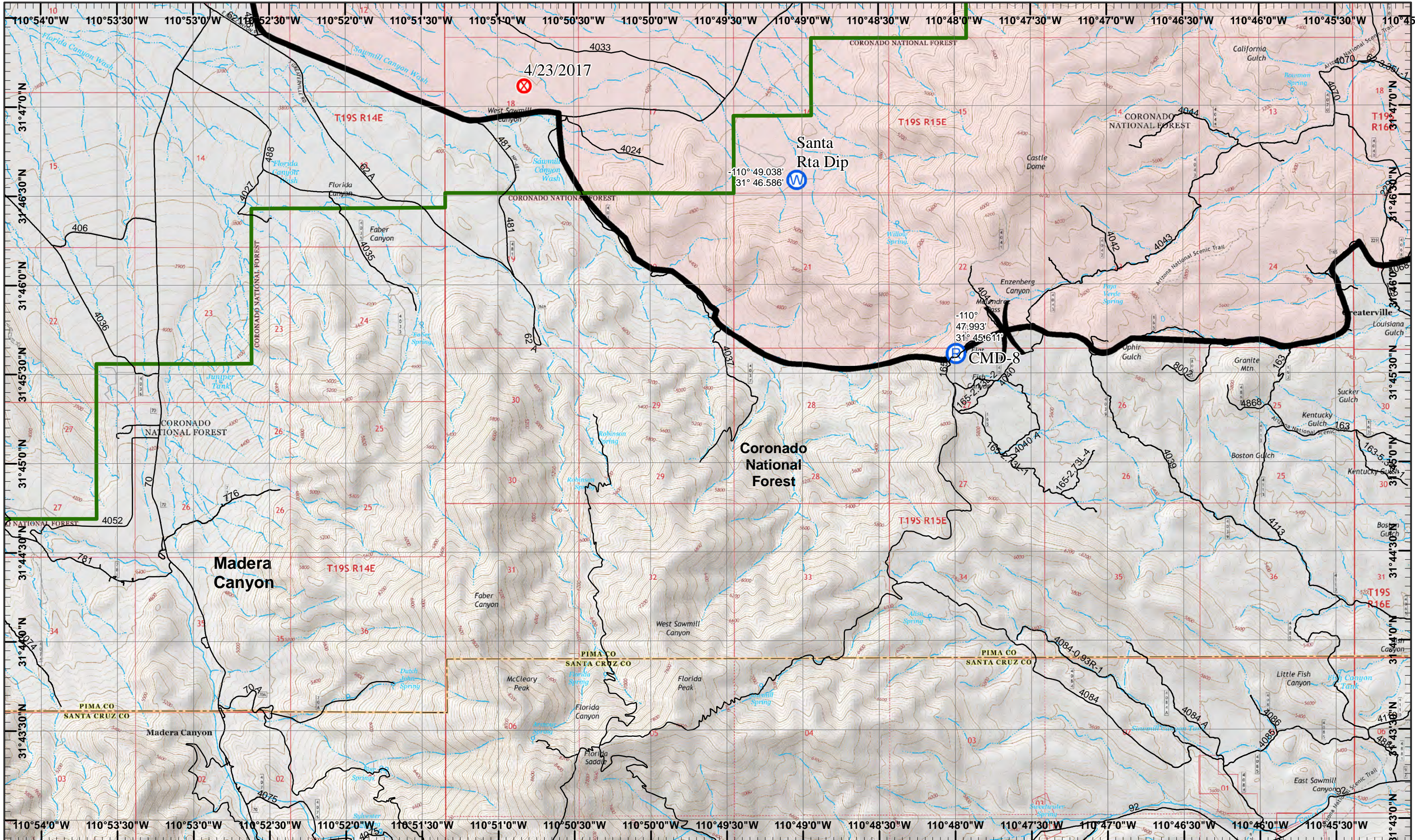
Neighboring Pages

West Page 2	North Page	East Page
	South Page 6	

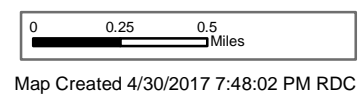
1	2	3
4	5	6

Page 3
)(Division
 || Branch





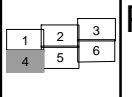
Sawmill Incident
 Day Operational Period 5/1/2017



Map Created 4/30/2017 7:48:02 PM RDC

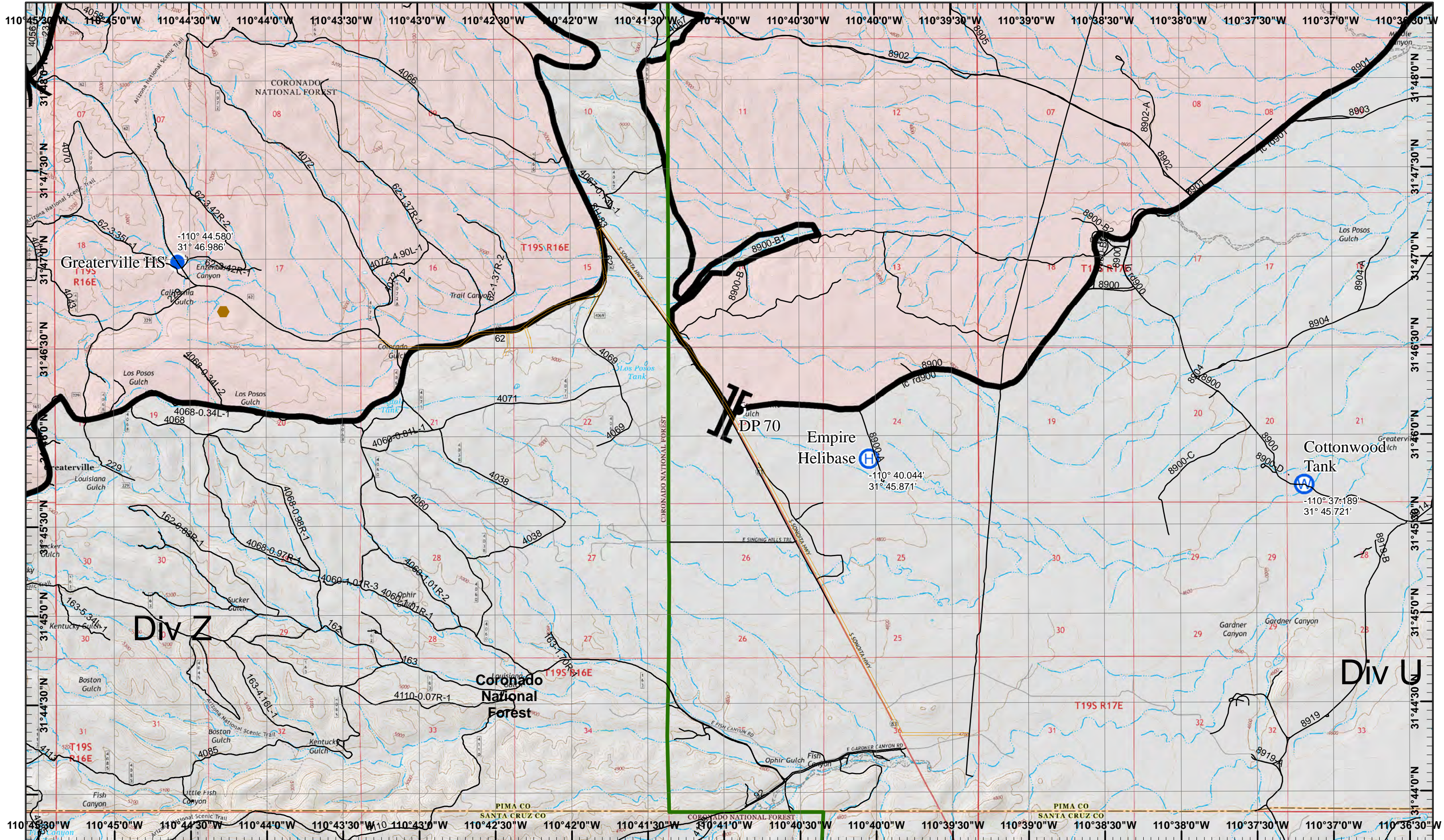
- North
- Fire Origin
- Water Source
- Repeater
- Completed Line

Neighboring Pages
 West Page North Page 1 East Page 5
 South Page



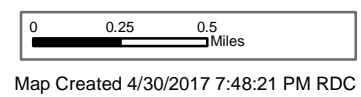
Page 4
)(Division
 || Branch





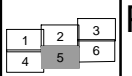
Sawmill Incident
 Day Operational Period 5/1/2017

GIS Acres 46,991
 4/28/2017 06:45



- North
- Drop Point
- Helibase
- Helispot
- Water Source
- Completed Line

Neighboring Pages
 West Page 4 North Page 2
 South Page East Page 6



Page 5
)(Division
 || Branch



