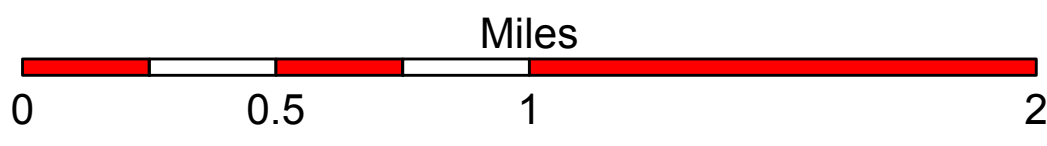
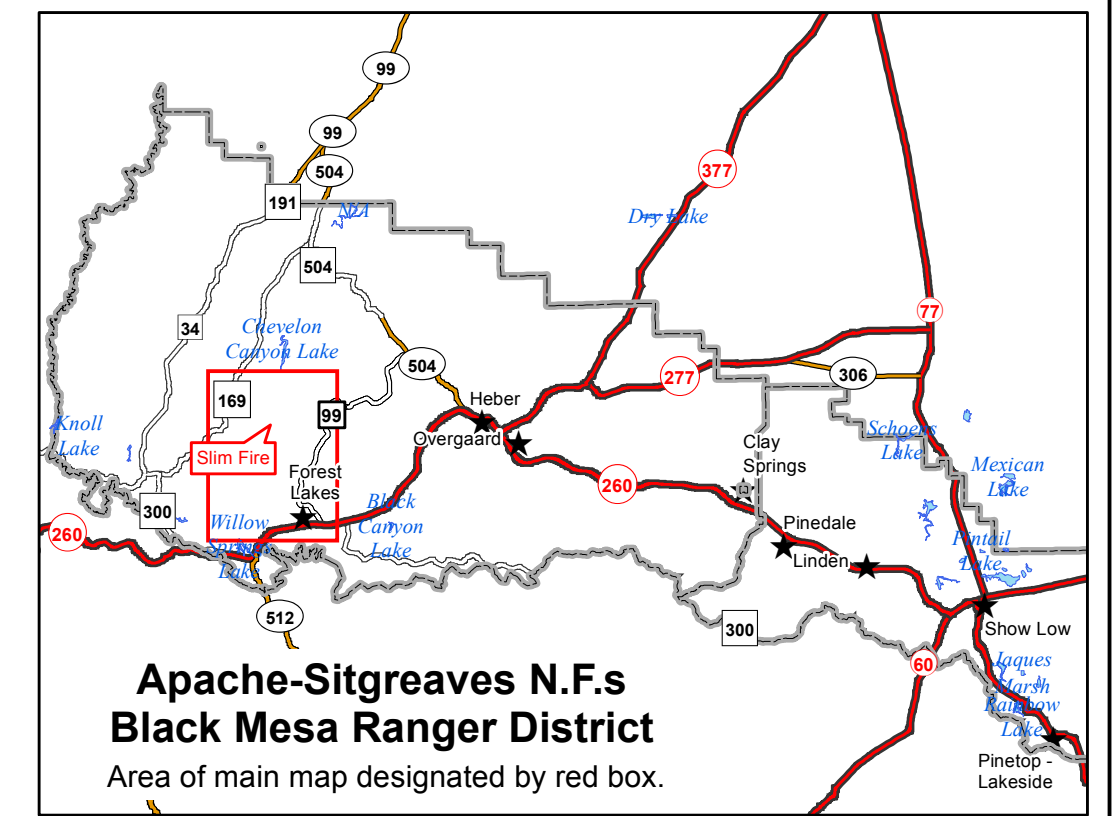


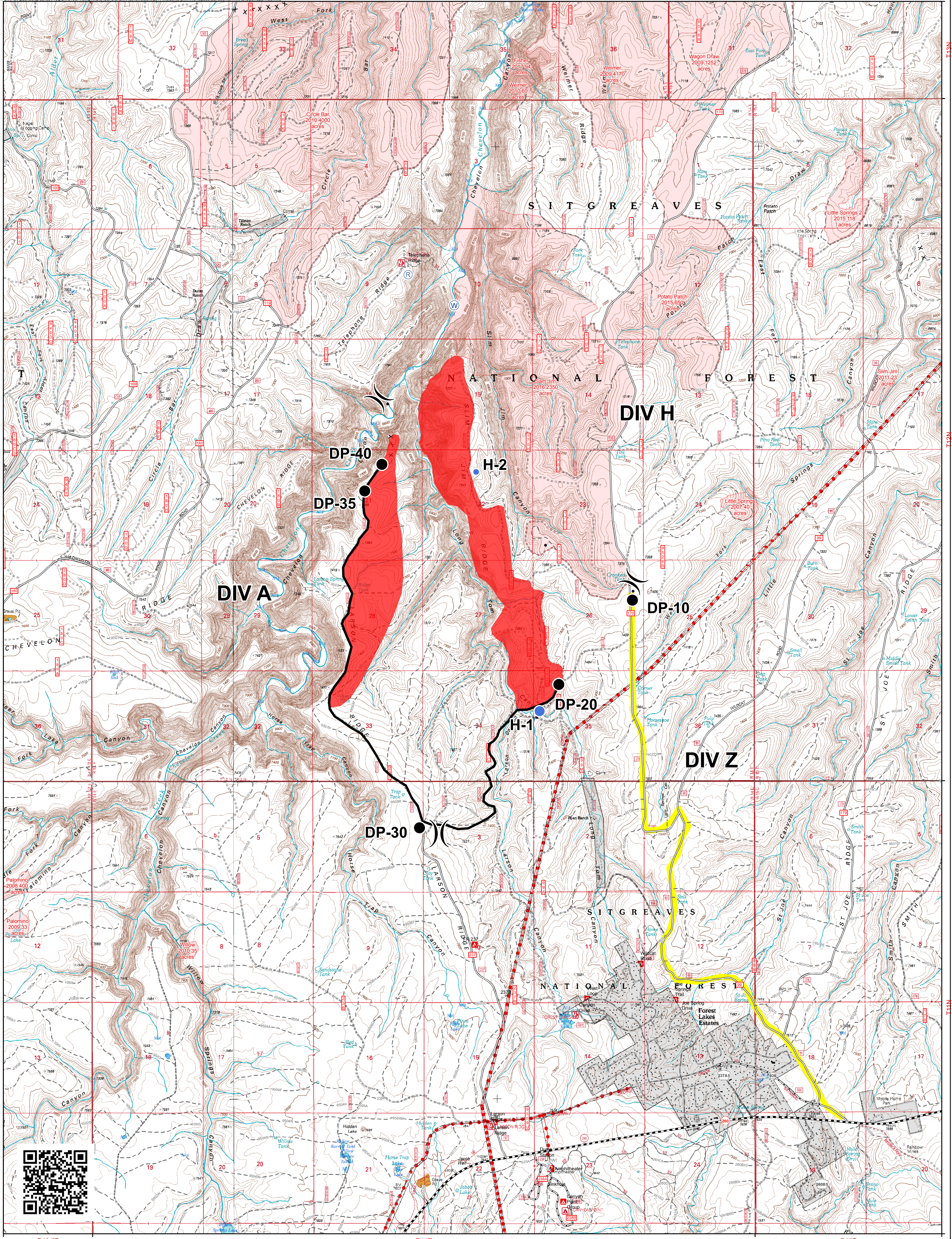
Slim Fire
6/5/2017
1250 acres
Black Mesa Ranger District
Apache-Sitgreaves N.F.s



- Drop Point
-) Division Break
- Helispot
- W Water Dip Site
- R Repeater
- Control Line
- Route to Fire
- - - - - Fence
- - - - - - Utility / Transmission Line
- Fire Perimeter
- Other Owner
- Fires >=10 Acres; 2007 to 2017



Date: 6/4/2017 by ebredemann
T:\SINFS\Apache\Sitgreaves\Programs\5100\FireMgmt\GIS\General\BMActive\Incident\2017\Incidents\Slim\Workspace\EBredemann\MXD\OpMap24x36.mxd



R13.5E

R14E

R15E