

**Slim Fire
AZ-ASF-000319
OPS Map
6/6/2017 06:00**

**2,898 acres
Per IR Flight
6/6/17 20:40**

**Black Mesa Ranger District
Apache-Sitgreaves N.F.s**

- Drop Point
- Heli Spot
- Ⓡ Repeater
- Ⓜ Waterpoint
- IR Isolated Heat Sources
- Completed Line
- Uncontrolled Fireline
- Route To Fire
- Building
- Ⓞ Pit Tank
- Ⓜ Well
- Ⓞ Water Storage Tank
- Ⓜ Campground or Camping Area
- Ⓜ Information Site, Interpretive Site or Fee Station
- Ⓜ Picnic Site or Day Use Area
- Fence
- Water Pipeline
- Utility / Transmission Line

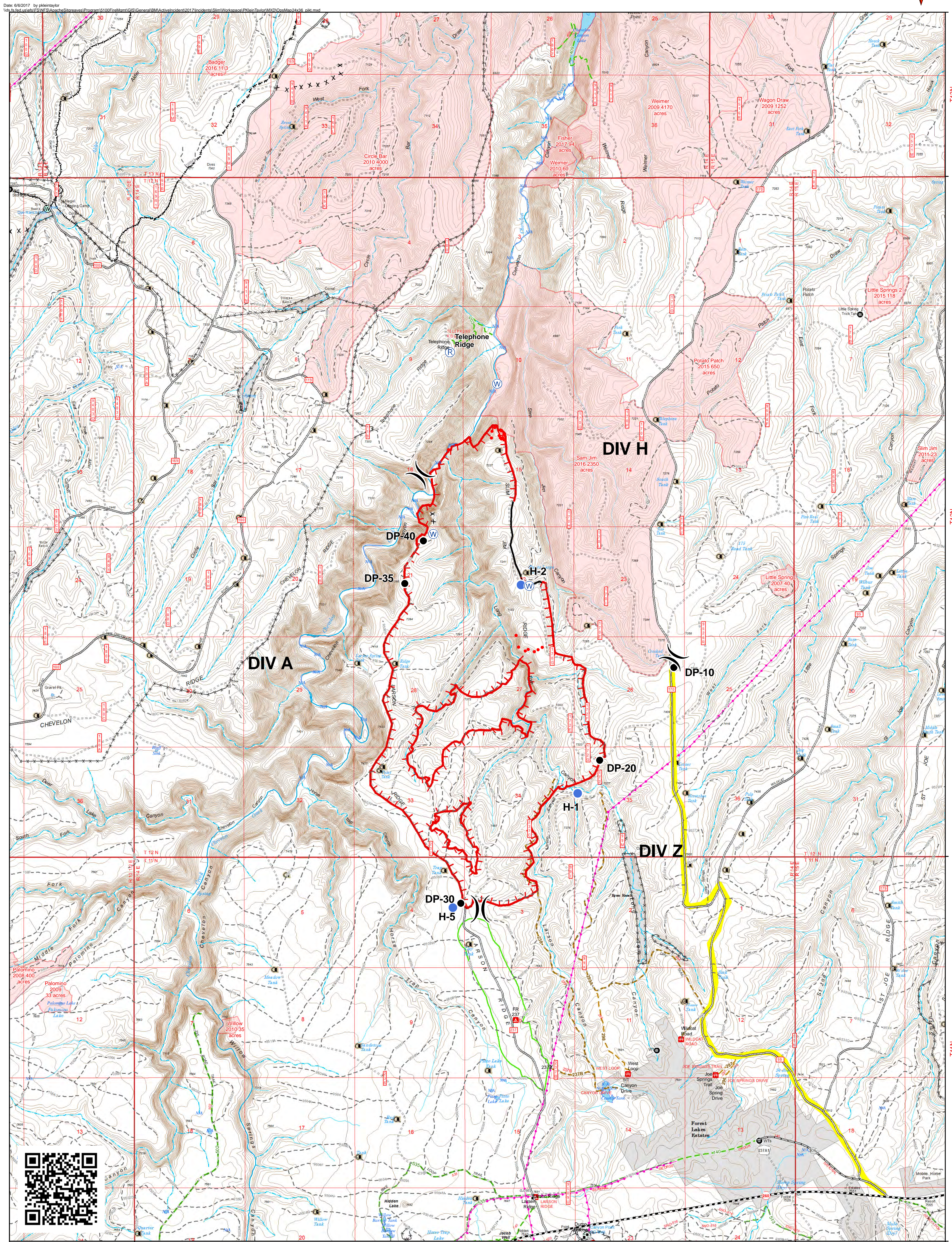
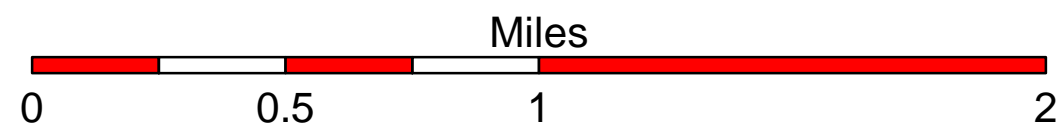
Trail Purpose

- Non-Motorized
- Motorized (OHV)

Road Operational Level & Status

- 5 - HIGH DEGREE OF USER COMFORT
- 4 - MODERATE DEGREE OF USER COMFORT
- 3 - SUITABLE FOR PASSENGER CARS
- 2 - HIGH CLEARANCE VEHICLES
- 1 - BASIC CUSTODIAL CARE (CLOSED)
- X X X Decommissioned

- Recreation Site (polygon)
- Fires >=10 Acres; 2007 to 2017
- Other Owner



Date: 6/6/2017 by pkleintaylor
 \\fs1\dfs\afs\FIS\NFS\Apache\Sitgreaves\Programs\GIS\100\Fire\Map\GIS\General\BMA\Development\2017\Incidents\Slim\Workspace\KleinTaylor\MXD\OpsMap24336.mxd



R13.5E R14E R15E