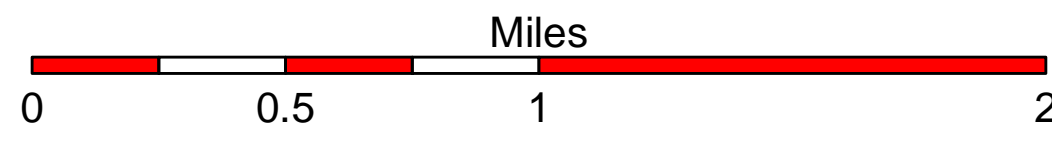


Slim Fire
AZ-ASF-000319
OPS Map
6/7/2017 06:00

3,282 acres
Per IR Flight
6/6/17 22:13

Black Mesa Ranger District
Apache-Sitgreaves N.F.s



- () Division Break
- Drop Point
- Helispot
- Ⓡ Repeater
- Ⓢ Spot Fire
- Ⓜ Water Source
- XXXXXXXXX Completed Dozer Line
- Completed Hand Line
- Completed Line
- Planned Secondary Line
- Uncontrolled Fire Edge

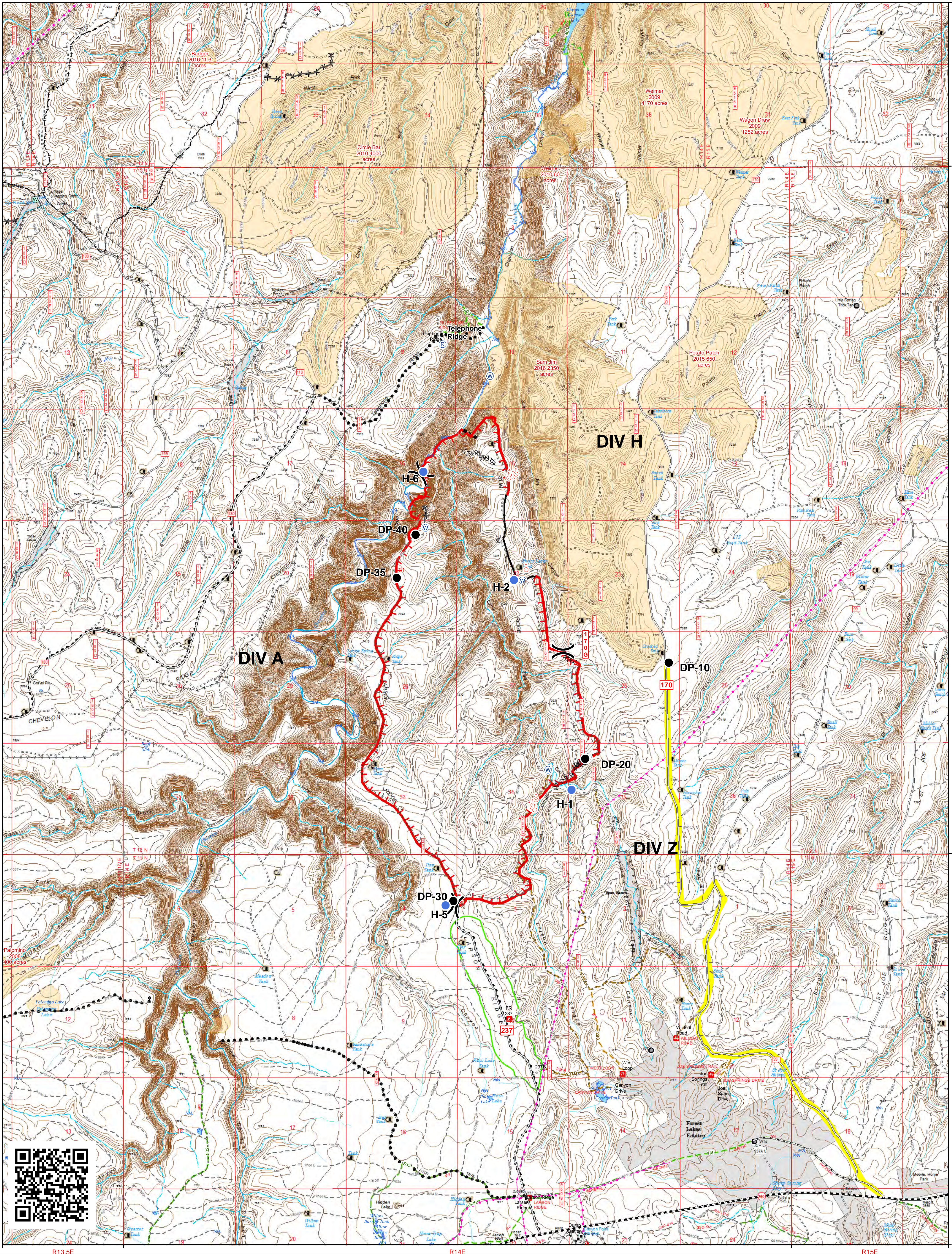
- Route To Fire
- Building
- Ⓜ Pit Tank
- Ⓜ Well
- Ⓜ Water Storage Tank
- Ⓜ Campground or Camping Area
- Ⓜ Information Site, Interpretive Site or Fee Station
- Ⓜ Picnic Site or Day Use Area
- Fence
- Water Pipeline
- Utility / Transmission Line

Trail Purpose

- Non-Motorized
 - Motorized (OHV)
- Road Operational Level & Status**
- 5 - HIGH DEGREE OF USER COMFORT
 - 4 - MODERATE DEGREE OF USER COMFORT
 - 3 - SUITABLE FOR PASSENGER CARS
 - 2 - HIGH CLEARANCE VEHICLES
 - 1 - BASIC CUSTODIAL CARE (CLOSED)
 - Decommissioned

- Recreation Site (polygon)
- Fires >=10 Acres; 2007 to 2017
- Other Owner

Date: 6/6/2017 by pkleintaylor
 V:\s1\fed\use\fs\NFS\ApacheSitgreaves\Program\5100\FireMgmt\GIS\General\BMA\Active\incident\2017\Incidents\Slim\projects\Ops_2438\port_2017_Slim_AZASF319.mxd



R135E

R14E

R15E