

**Slim Fire
AZ-ASF-000319
OPS Map
6/8/2017 06:00**

**3,291 acres
Per IR Flight 6/6/17 22:13
GPS updates 6/7/17**

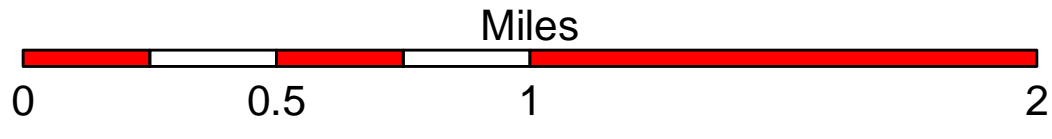
**Black Mesa Ranger District
Apache-Sitgreaves N.F.s**

- (X) Division Break
- Drop Point
- Helispot
- (R) Repeater
- ⊕ Spot Fire
- (W) Water Source
- ┌─┐ Uncontrolled Fire Edge

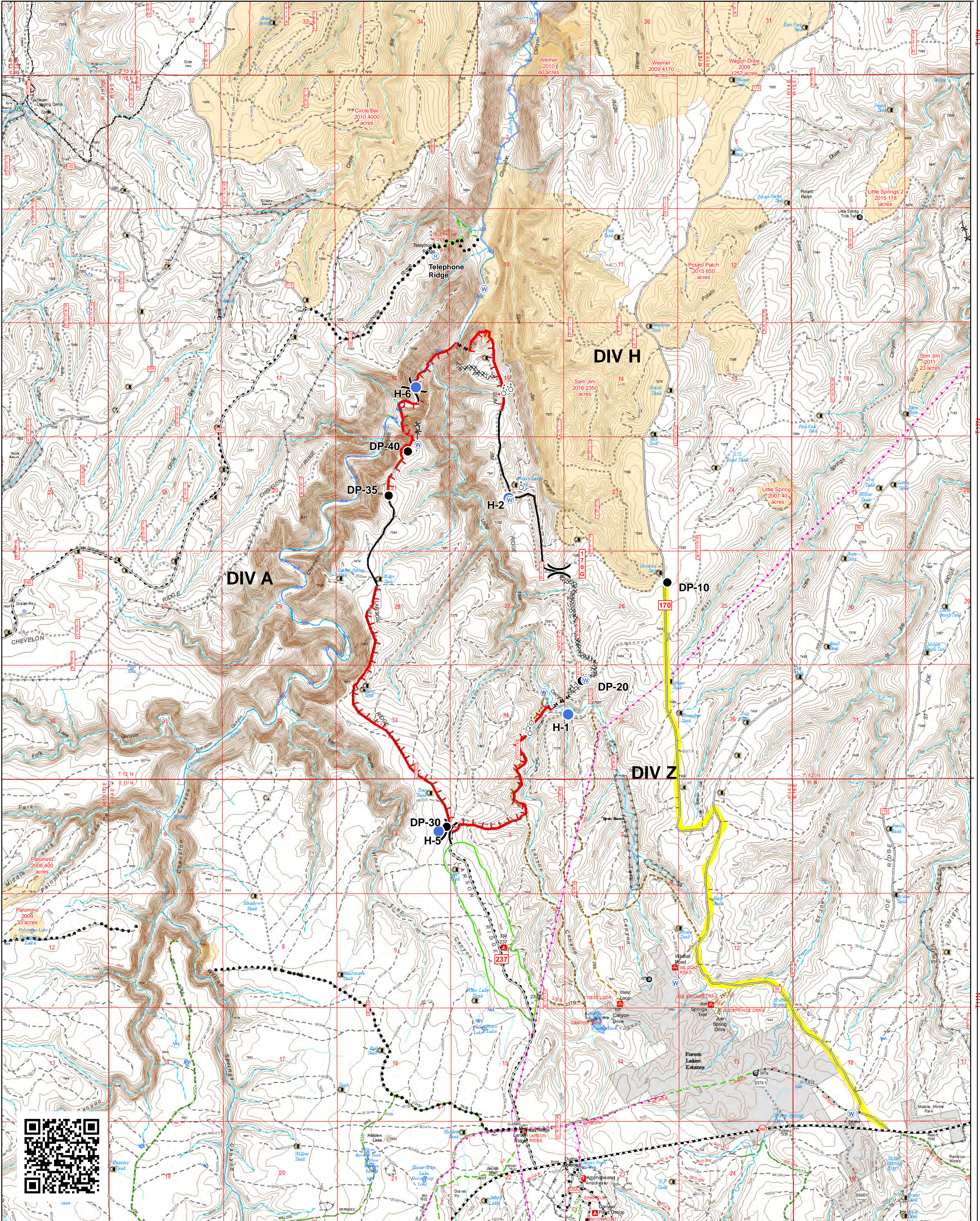
- Completed Line
- ▨ Completed Dozer Line
- ▧ Completed Hand Line
- ⋯ Planned Secondary Line
- █ Route To Fire
- Building
- ⊗ Pit Tank
- ⊙ Well
- ⊙ Water Storage Tank

- ▲ Campground or Camping Area
- Ⓜ Information Site, Interpretive Site or Fee Station
- Ⓜ Picnic Site or Day Use Area
- Fence
- Water Pipeline
- Utility / Transmission Line
- Trail Purpose
- Non-Motorized
- Motorized (OHV)

- Road Operational Level & Status**
- 5 - HIGH DEGREE OF USER COMFORT
 - 4 - MODERATE DEGREE OF USER COMFORT
 - 3 - SUITABLE FOR PASSENGER CARS
 - 2 - HIGH CLEARANCE VEHICLES
 - 1 - BASIC CUSTODIAL CARE (CLOSED)
 - ✖✖✖ Decommissioned
 - ▭ Recreation Site (polygon)
 - ▭ Fires >=10 Acres; 2007 to 2017
 - ▭ Other Owner



Date: 6/7/2017 by pkleintaylor
\\fs1.fed.us\efs\FS\NFS\Apache\Sitgreaves\Program\5100\FireMgmt\GIS\General\BM\Active\incident\2017\Incidents\Slim\projects\Ops_24k36port_2017_Slim_AZASF319.mxd



R13.5E

R14E

R15E