

Slim Fire
Black Mesa Ranger District
Apache-Sitgreaves N.F.s

Date: 06/9/2017 Fire Size:
 3241 acres
 (Reduced acres due to
 more accurate mapping)



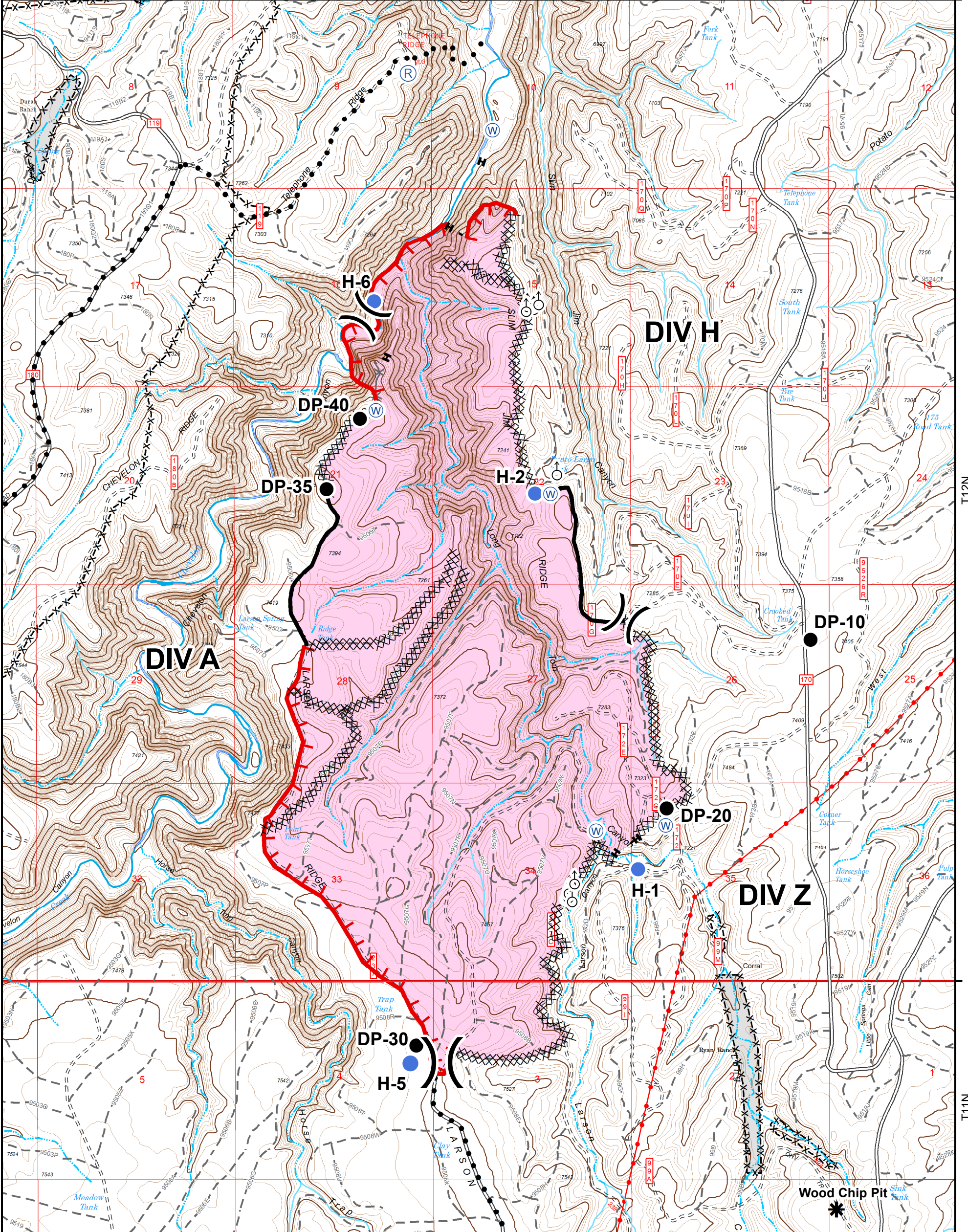
- Drop Point
-) Division Break
- Helispot
- ⊙ Water Source
- ⊙ Repeater
- ♂ Spot Fire
- ✱ Wood Chip Pit

- ┌ Uncontrolled Fireline
- Completed Line
- ×××× Completed Dozer Line
- H - H - Completed Hand Line
- Planned Secondary Line
- x-x-x-x Fence
- Utility/Transmission Line

**Road Operational
 Level & Status**

- ▬ Level 5
- ▬ Level 4
- ▬ Level 3
- ▬ Level 2
- ▬ Level 1
- ✱✱ Decommissioned

Date: 6/8/2017 By: ebredemann
 T:\F5\NFS\ApacheSitgreaves\Program\5100FireMgmt\GIS\General\BM\ActiveIncident\2017\Incidents\Slim\Workspace\srichardson\WXD\Slim_IAPMap1x17_24k_20170604.mxd



R14E

T12N

T11N